



AB SIĞIR VE DANA ETİ PAZAR DURUMU

20 Ekim 2016

May/Jun 1000 Hd	TOT LIVESTOCK				%Var 2016 2015	BOVINE < 1 Year				%Var 2016 2015	BOVINE 1-2 Year				%Var 2016 2015	BOVINE > 2 Year				%Var 2016 2015
	2013	2014	2015	2016		2013	2014	2015	2016		2013	2014	2015	2016		2013	2014	2015	2016	
BE	2 433	2 521	2 531	2 470	-2.4%	689	734	744	728	-2.1%	495	508	504	493	-2.2%	1 248	1 282	1 283	1 248	-2.7%
BG																				
CZ																				
DK	1 603	1 585	1 568	1 583	+1.0%	523	528	524	547	+4.4%	328	318	316	307	-2.8%	752	739	728	730	+0.3%
DE	12 587	12 702	12 653	12 563	-0.7%	3 849	3 874	3 846	3 805	-1.1%	3 011	3 004	3 002	2 983	-0.6%	5 727	5 824	5 805	5 775	-0.5%
EE																				
IE	6 903	6 926	6 964	7 221	+3.7%	1 968	1 878	2 042	2 126	+4.1%	1 811	1 767	1 705	1 853	+8.7%	3 123	3 280	3 216	3 242	+0.8%
EL																				
ES	5 822	6 008	6 234	6 445	+3.4%	2 026	2 172	2 281	2 404	+5.4%	801	795	898	899	+0.1%	2 995	3 041	3 055	3 142	+2.9%
FR	19 179	19 286	19 463	19 559	+0.5%	5 497	5 530	5 603	5 638	+0.6%	3 529	3 478	3 540	3 561	+0.6%	10 153	10 280	10 319	10 362	+0.4%
IT	6 053	6 197	6 146	6 183	+0.6%	1 587	1 703	1 670	1 702	+1.9%	1 480	1 445	1 370	1 502	+9.7%	2 986	3 049	3 107	2 979	-4.1%
CY																				
LV																				
LT																				
LU																				
HU																				
MT																				
NL	4 000	4 068	4 134	4 244	+2.7%	1 616	1 643	1 624	1 691	+4.1%	624	634	672	630	-8.3%	1 759	1 791	1 838	1 923	+4.7%
AT	1 939	1 937	1 950	1 933	-0.9%	604	613	622	605	-2.7%	435	424	437	441	+0.8%	900	901	891	887	-0.5%
PL	5 860	5 920	5 961	5 939	-0.4%	1 586	1 609	1 669	1 728	+3.6%	1 422	1 433	1 529	1 576	+3.1%	2 852	2 879	2 783	2 635	-4.6%
PT																				
RO	2 054	2 069	2 078	2 081	+0.2%	478	479	477	481	+0.9%	236	236	235	240	+2.3%	1 340	1 354	1 366	1 360	-0.4%
SI																				
SK																				
FI																				
SE	1 506	1 493	1 476	1 489	+0.9%	468	472	466	475	+2.0%	381	370	372	375	+0.8%	657	651	638	639	+0.1%
UK	9 843	9 837	9 919	10 019	+1.0%	2 808	2 801	2 912	2 984	+2.5%	2 474	2 384	2 380	2 449	+2.9%	4 561	4 652	4 626	4 587	-0.8%
EU	79 781	80 550	81 076	81 730	+0.8%	23 698	24 035	24 481	24 915	+1.8%	17 027	16 792	16 959	17 308	+2.1%	39 055	39 722	39 635	39 509	-0.3%

Source : EStat Newcronos

EU %Var is calculated considering only countries available in 2015 AND 2016



European
Commission

May/Jun 1000 Hd	TOTAL COWS				%Var 2016 2015	DAIRY COWS				%Var 2016 2015	OTHER COWS				%Var 2016 2015
	2013	2014	2015	2016		2013	2014	2015	2016		2013	2014	2015	2016	
BE	1 007	971	987	971	-1.6%	510	522	524	522	-0.4%	498	449	463	449	-3.0%
BG															
CZ															
DK	678	664	661	669	+1.2%	576	563	561	572	+2.0%	102	101	99	97	-2.0%
DE	4 896	4 981	4 969	4 957	-0.2%	4 223	4 311	4 287	4 272	-0.3%	673	670	682	685	+0.4%
EE															
IE	2 313	2 355	2 372	2 502	+5.5%	1 163	1 226	1 296	1 398	+7.9%	1 150	1 129	1 076	1 104	+2.6%
EL															
ES	2 595	2 716	2 678	2 810	+4.9%	823	876	853	827	-3.0%	1 772	1 840	1 825	1 983	+8.7%
FR	7 682	7 759	7 809	7 838	+0.4%	3 545	3 615	3 606	3 578	-0.8%	4 137	4 144	4 203	4 263	+1.4%
IT	2 381	2 382	2 375	2 245	-5.5%	1 989	2 053	2 061	1 948	-5.5%	392	329	314	297	-5.4%
CY															
LV															
LT															
LU															
HU															
MT															
NL	1 637	1 655	1 702	1 811	+6.4%	1 553	1 572	1 622	1 743	+7.5%	84	82	80	68	-15.4%
AT	769	770	762	755	-0.9%	524	534	540	536	-0.6%	245	236	222	218	-1.8%
PL	2 531	2 479	2 444	2 332	-4.6%	2 361	2 310	2 279	2 146	-5.8%	170	169	165	186	+12.6%
PT															
RO	1 222	1 224	1 233	1 228	-0.4%	1 208	1 207	1 216	1 216	-0.0%	13	17	17	12	-29.4%
SI															
SK															
FI															
SE	539	531	523	525	+0.4%	346	344	338	331	-2.2%	193	186	184	194	+5.1%
UK	3 393	3 411	3 472	3 490	+0.5%	1 782	1 841	1 895	1 895	idem	1 611	1 569	1 576	1 594	+1.1%
EU	31 642	31 899	31 987	32 132	+0.5%	20 603	20 976	21 078	20 981	-0.5%	11 040	10 922	10 907	11 150	+2.2%

Source : EStat Newcronos

EU %Var is calculated considering only countries available in 2015 AND 2016



European
Commission

BAŞ

HEADS	Jan-Jul 15/16	
	EU15	EU28
Bull	-3.0%	-2.0%
Bullock	-0.6%	-0.5%
Cow	+5.2%	+6.4%
Heifer	+3.9%	+4.9%
Calve	+2.8%	+2.7%
Young cattle	+0.8%	+1.7%
Meat of bovine animals	+1.8%	+2.5%

BOĞA

ÖKÜZ

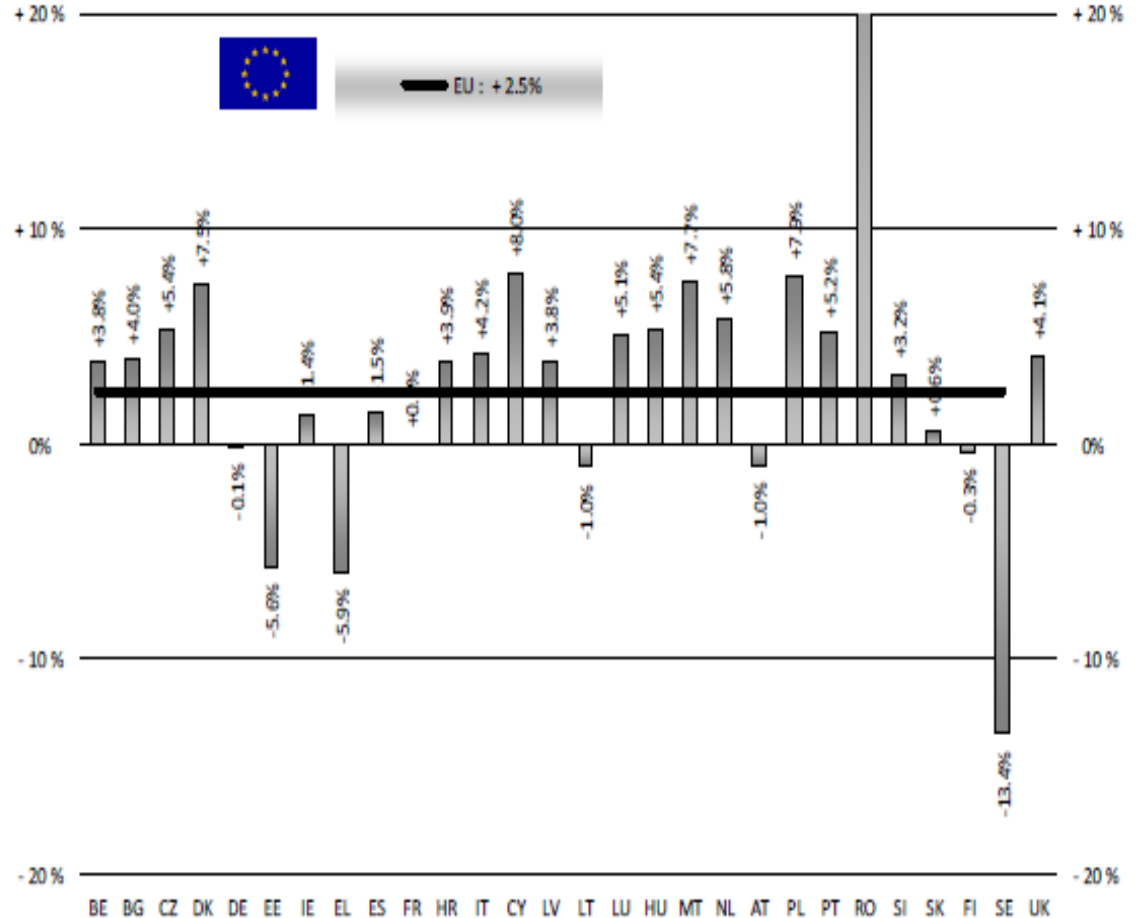
İNEK

DÜVE

BUZAĞI

GENÇ
SİĞİR

Büyükbaş
Hayvan
Eti



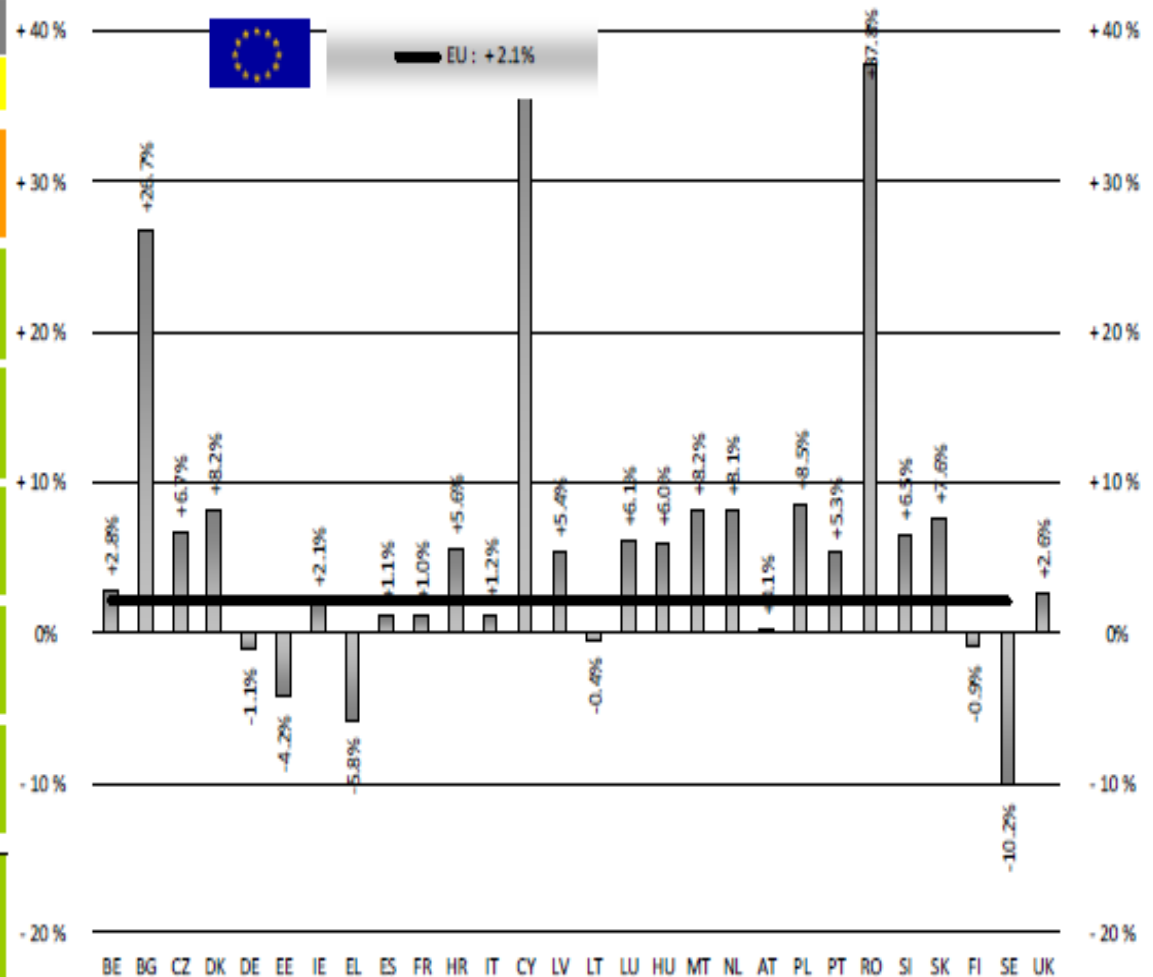
Estimates for last month of period :

Source : EStat - Newcronos



European
Commission

TON	TONNES	Jan-Jul 15/16	
		EU15	EU28
BOĞA	Bull	-2.7%	-1.7%
ÖKÜZ	Bullock	+0.4%	+0.4%
İNEK	Cow	+4.7%	+5.7%
DÜVE	Heifer	+2.9%	+3.7%
BUZAĞI	Calve	+3.7%	+3.6%
GENÇ SİĞİR	Young cattle	+0.8%	+2.0%
Büyükbaş Hayvan Eti	Meat of bovine animals	+1.3%	+2.1%

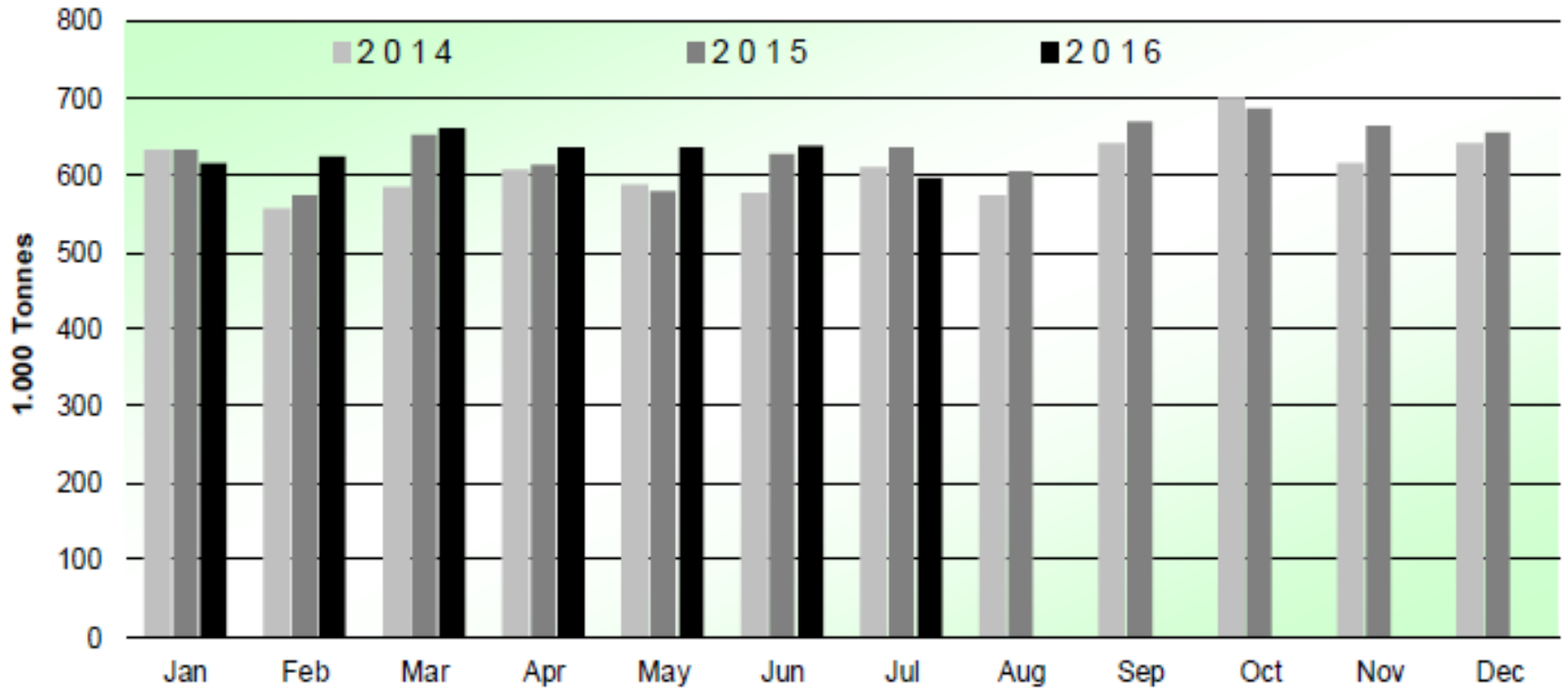


Estimates for last month of period :

Source : EStat - Newcronos



Sığır ve Dana Eti Üretimi (EU-28 Kesimler) - Ton



Source : EStat-Newcronos

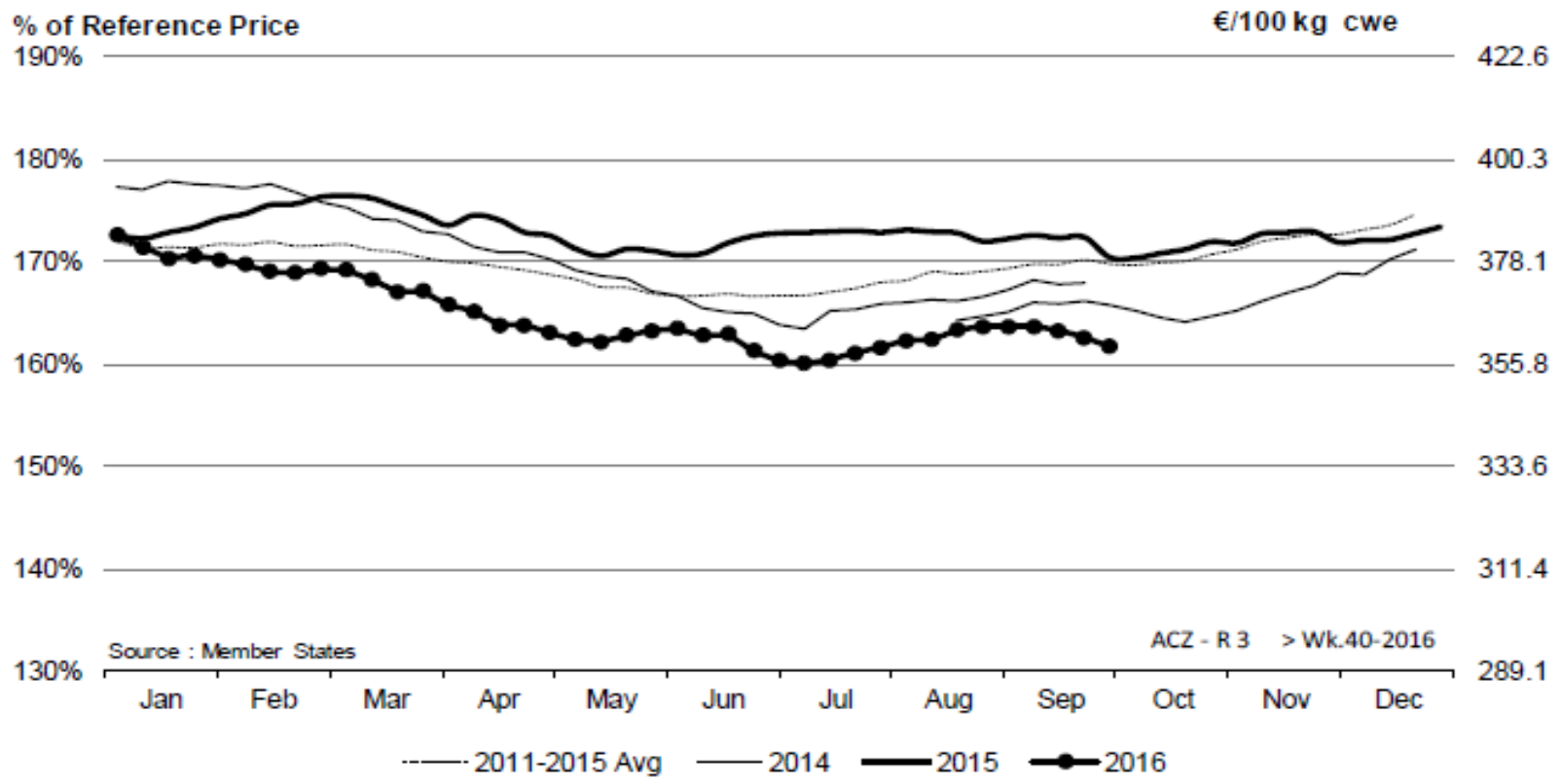


EU Prices week		40	Evolution since last week	Evolution since last month	Evolution since last year
Carcasse	Average A/C/Z-R3	359.6	- 0.5%	- 1.2%	- 5.1%
	Young Bovines (Z)	366.7	- 0.4%	- 2.2%	- 0.4%
	Young Bulls (A)	358.5	+ 0.0%	- 0.5%	- 0.6%
	Steers (C)	385.8	- 1.9%	- 4.2%	- 12.3%
	Cows (D)	263.1	- 0.5%	- 2.8%	- 7.4%
	Heifers (E)	374.2	+ 0.0%	- 1.2%	- 4.8%
Live Animals	Male Calves Dairy Type	81.33	- 2.0%	- 11.9%	- 7.4%
	Male Calves Beef Type	212.5	- 1.8%	- 2.9%	- 1.8%
	Young Store Cattle	2.28	- 0.2%	- 1.5%	- 6.6%
	Yearling Male Store Cattle	2.15	- 1.6%	- 4.4%	- 11.1%
	Yearling Female Store Cattle	2.20	- 0.6%	- 2.9%	- 5.2%
	Calves slaughtered <8M	488.1	+ 0.1%	+ 3.5%	- 5.5%

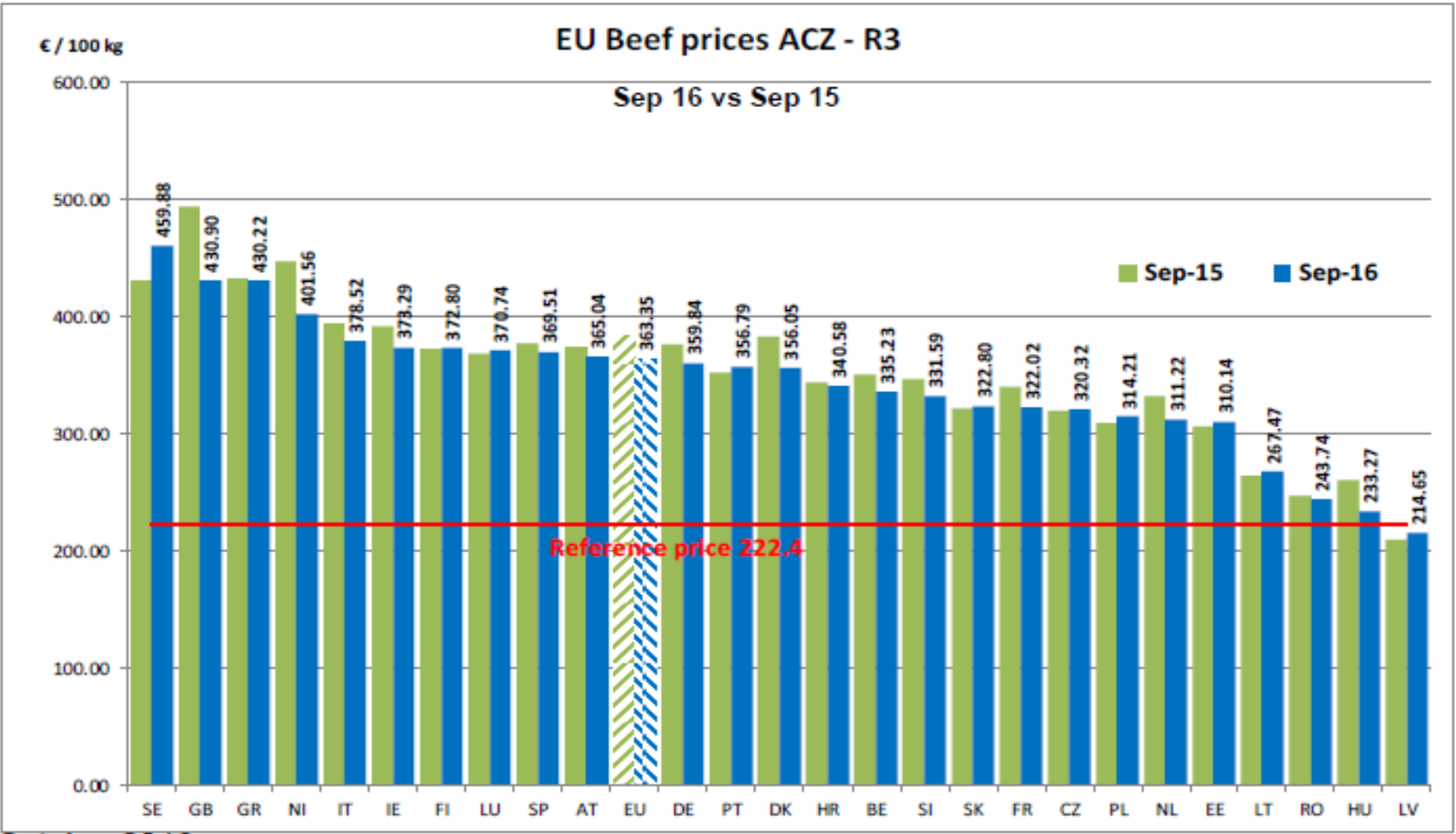
Sources : MSs notifications (Regulation (EC) 1249/2008 and 807/2013)



ACZ - R 3 > Wk.40-2016



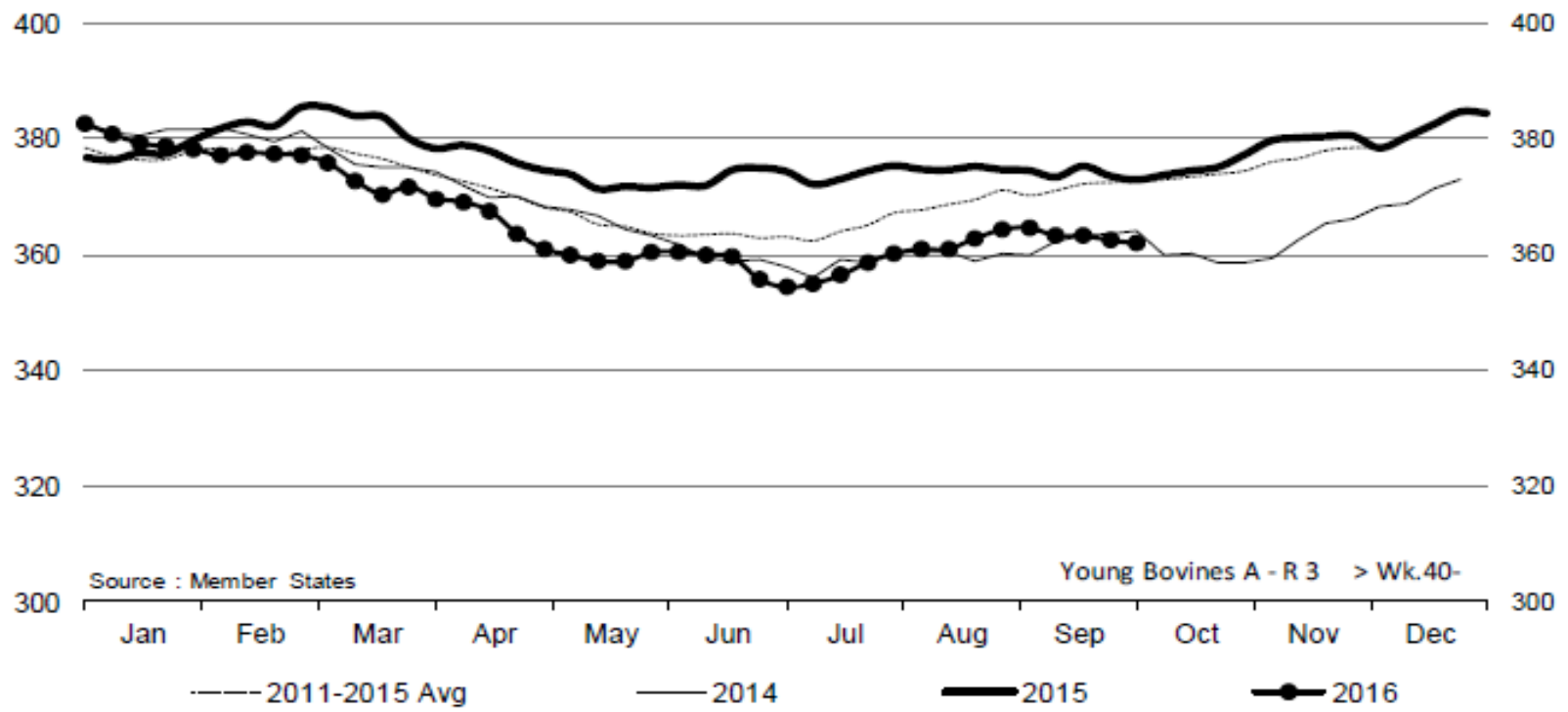
Price in week 40 :	359.67	Average price in September 2016 :	363.35
% change y/y :	- 5.1%	% change y/y :	- 5.1%
% Ref. Price in wk 40 :	161.7%		





Commission

Young Bovines A - R 3 > Wk.40-2016



Source : Member States

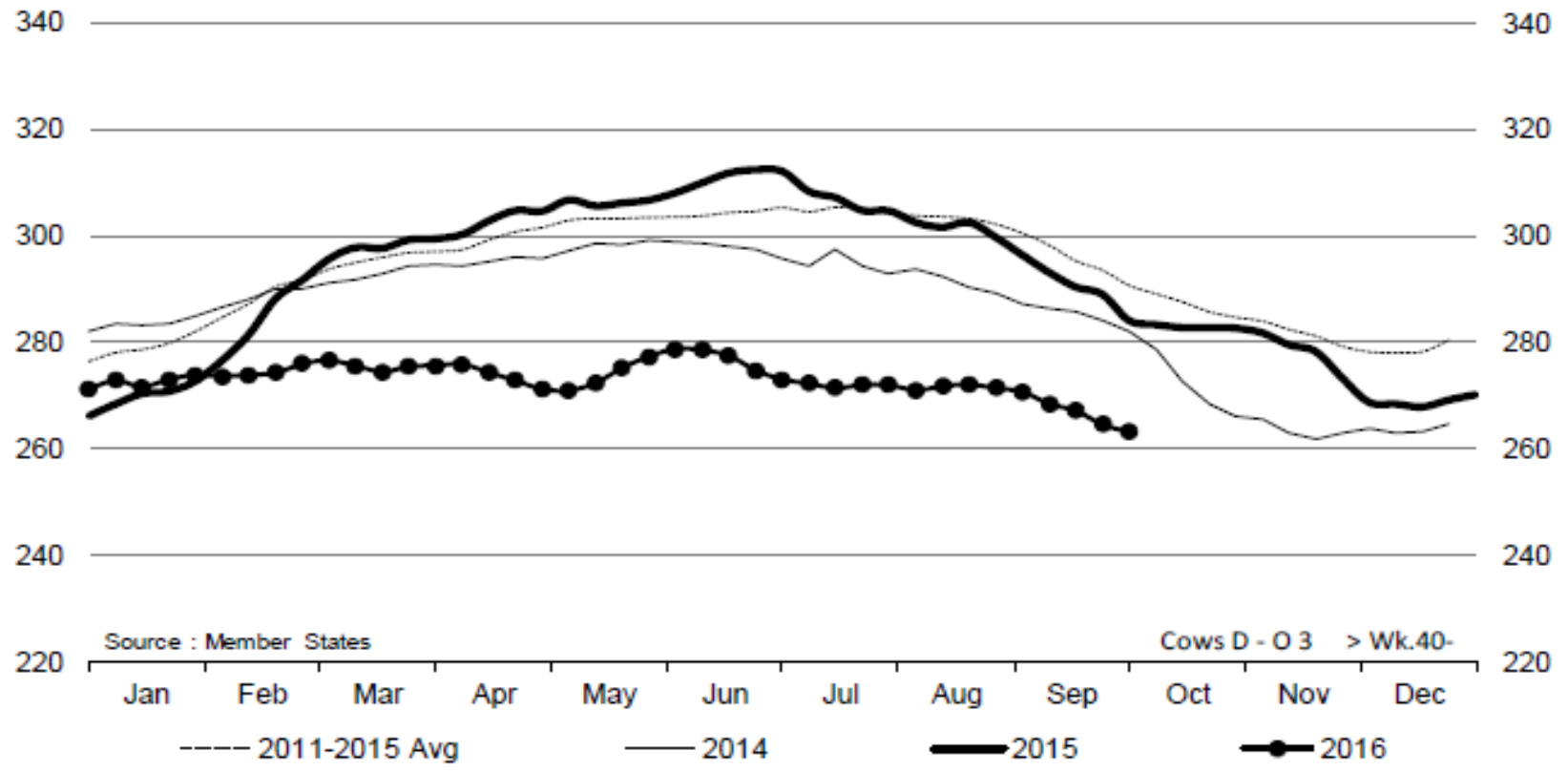
Young Bovines A - R 3 > Wk.40-

Price in week 40 : **361.97**
% change y/y : **- 3.0%**

Average price in September 2016 : **363.63**
% change y/y : **- 2.8%**



Cows D - O 3 > Wk.40-2016

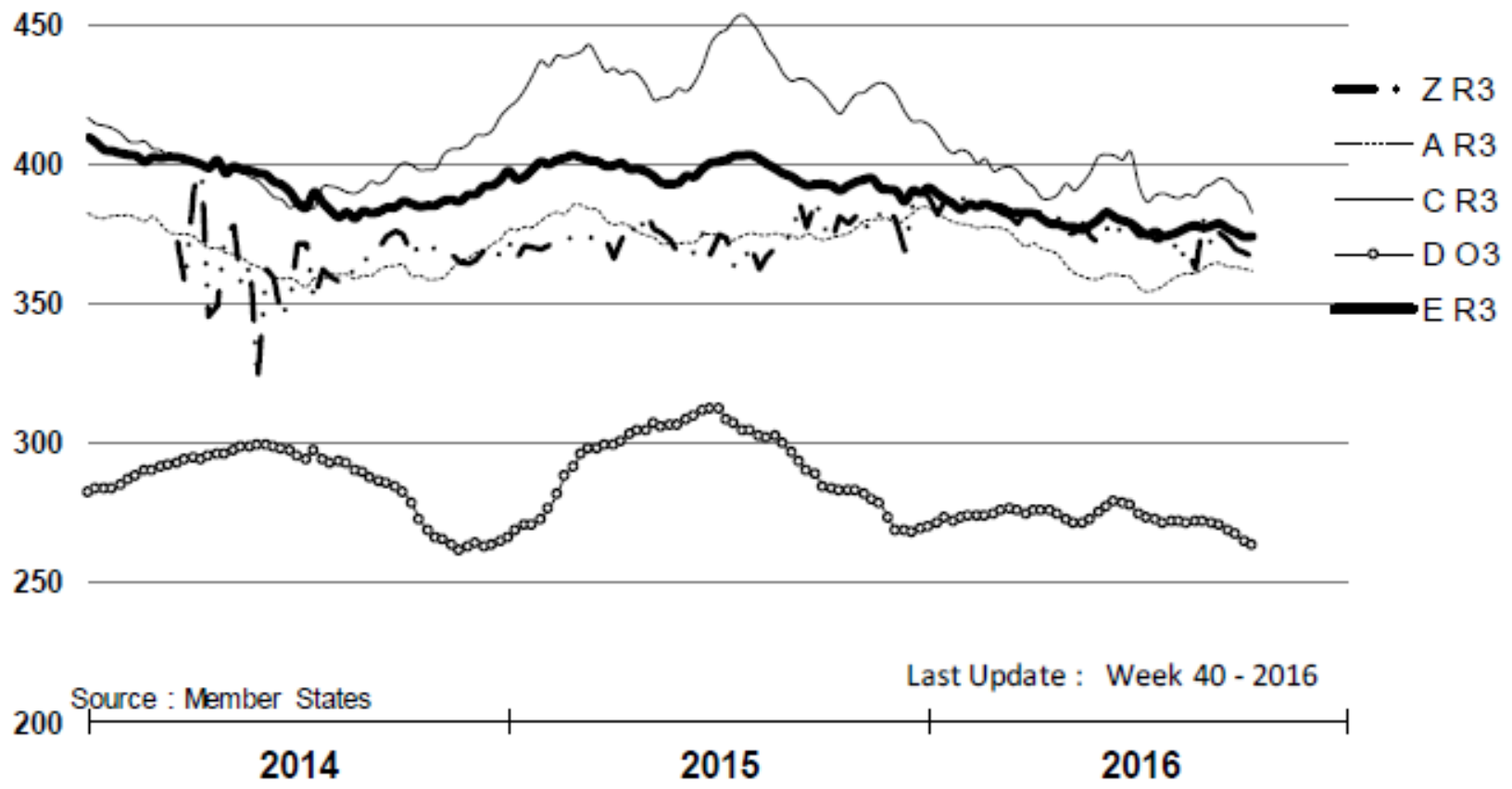


Price in week 40 : 263.16
% change y/y : - 7.4%

Average price in September 2016 : 268.39
% change y/y : - 7.9%

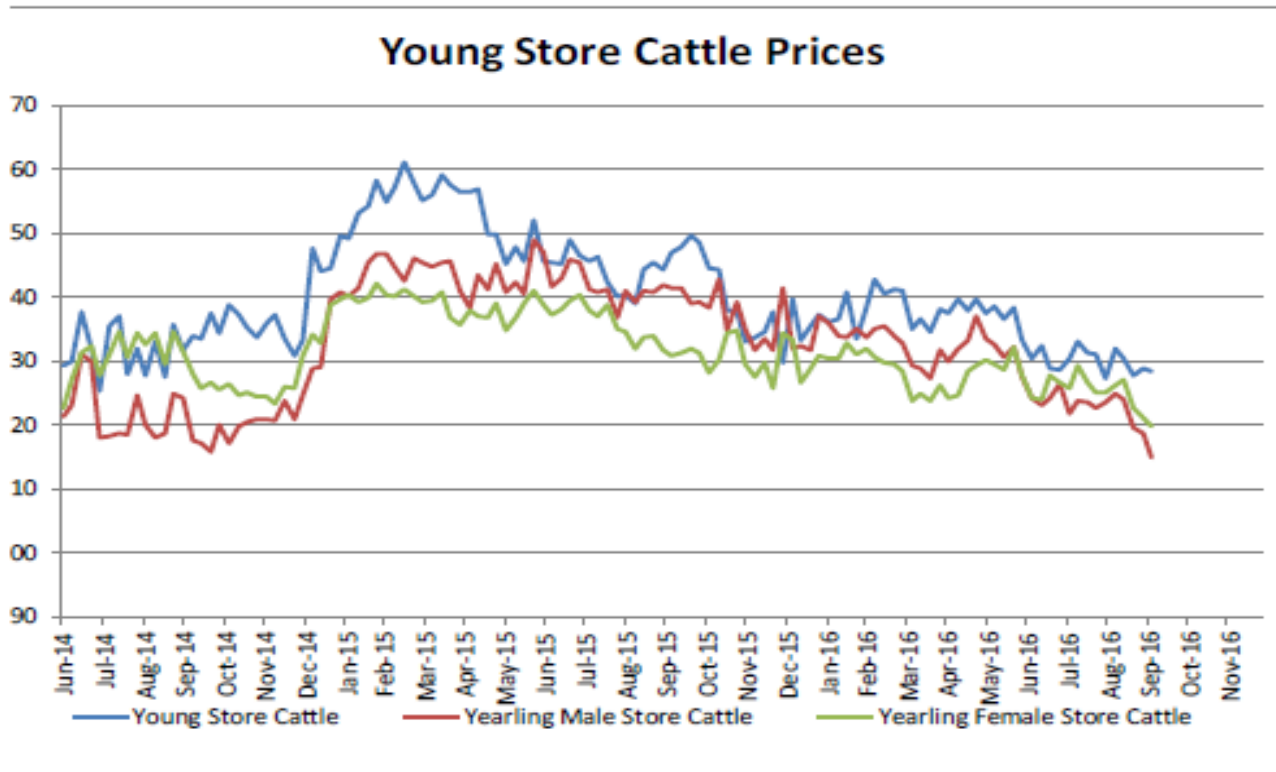
KARKAS FİYATLARI

AB TÜM KATEGORİLERE GLOBAL BAKIŞ



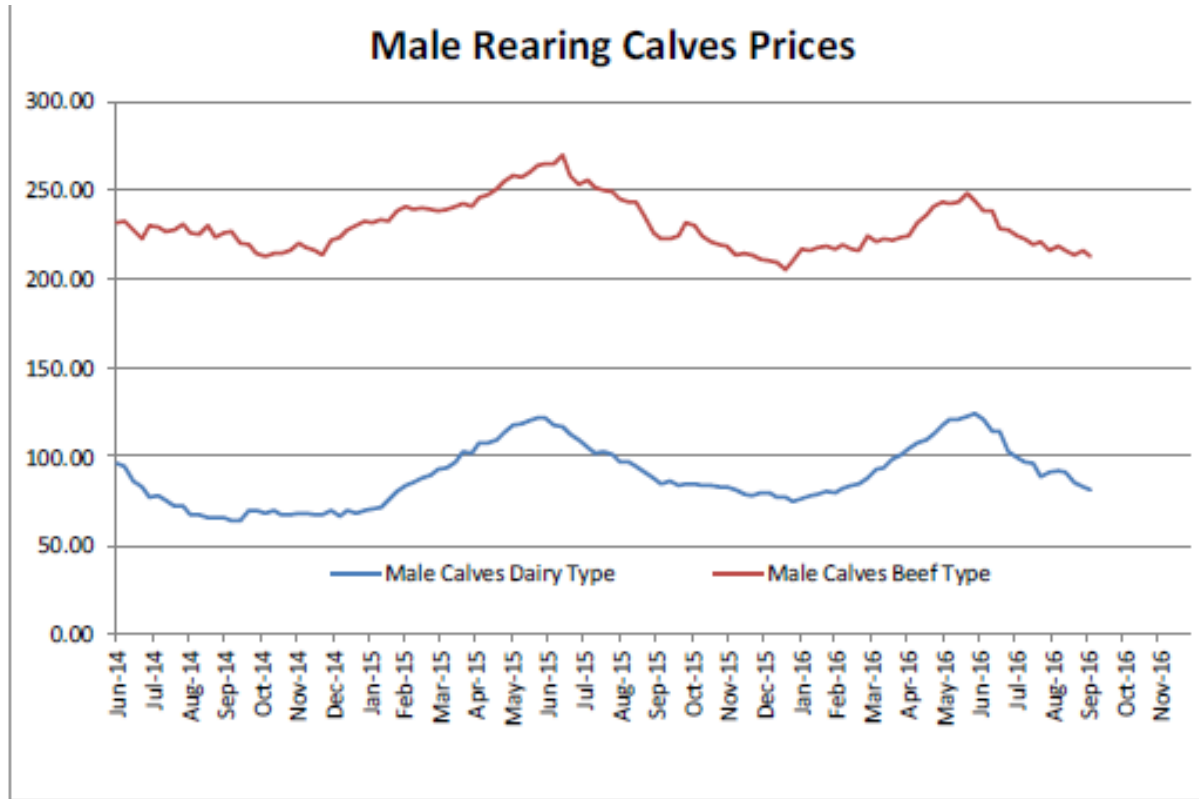


Besilik siğır (€ / 100 kg canlı ağırlık)



Young Store Cattle Price in	Week 40	2.28	Yearling Male Store Cattle Price	2.15	
	Change y/y	-6.56%		Change y/y	-11.14%
Yearling Female Store Cattle Price		2.20			
	Change y/y	-5.20%			

8 gün ve 4 haftalık erkek buzağılar (€ / baş)



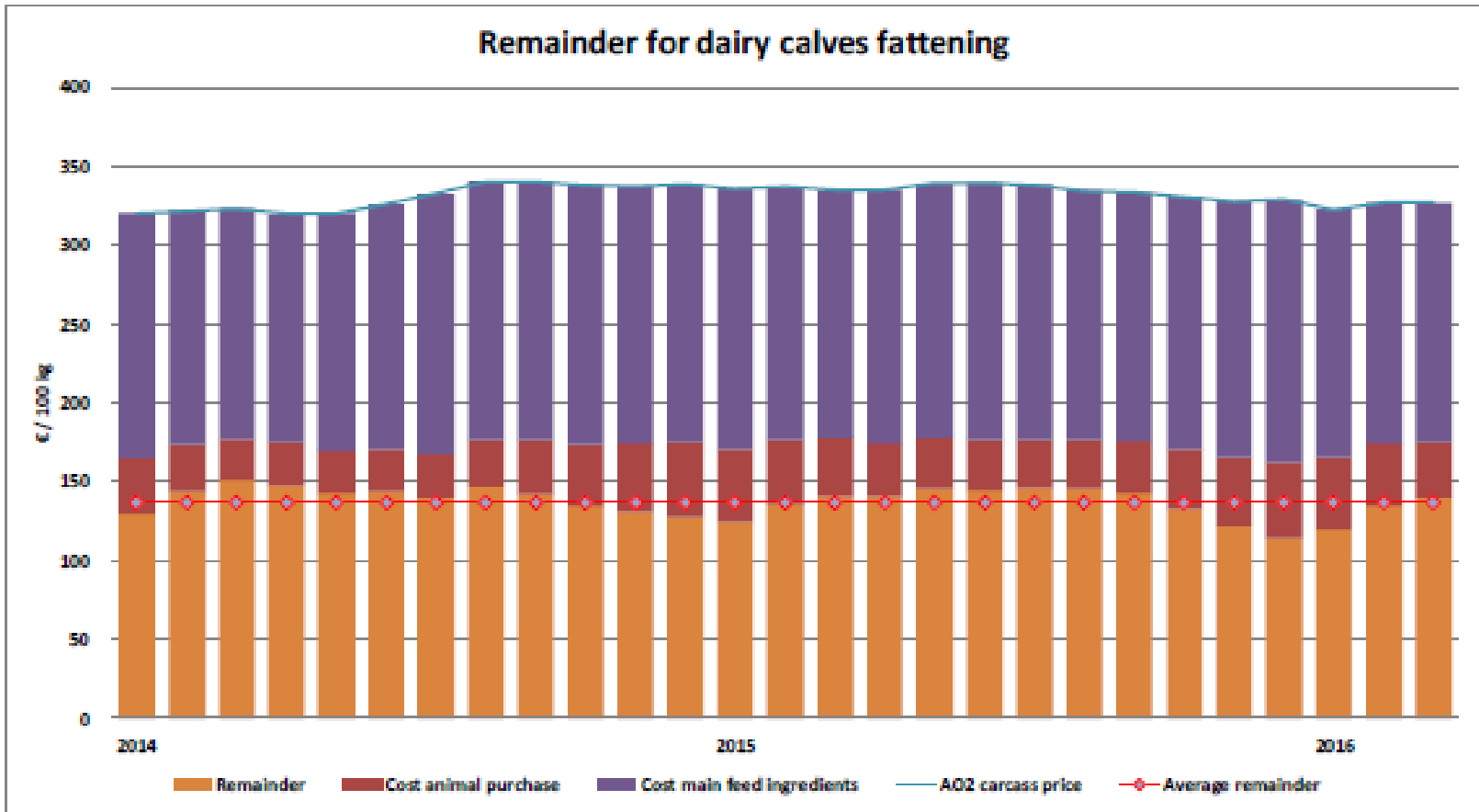
Male Rearing Calves Beef type

Price in Week 40 212.57
Change y/y -6.06%

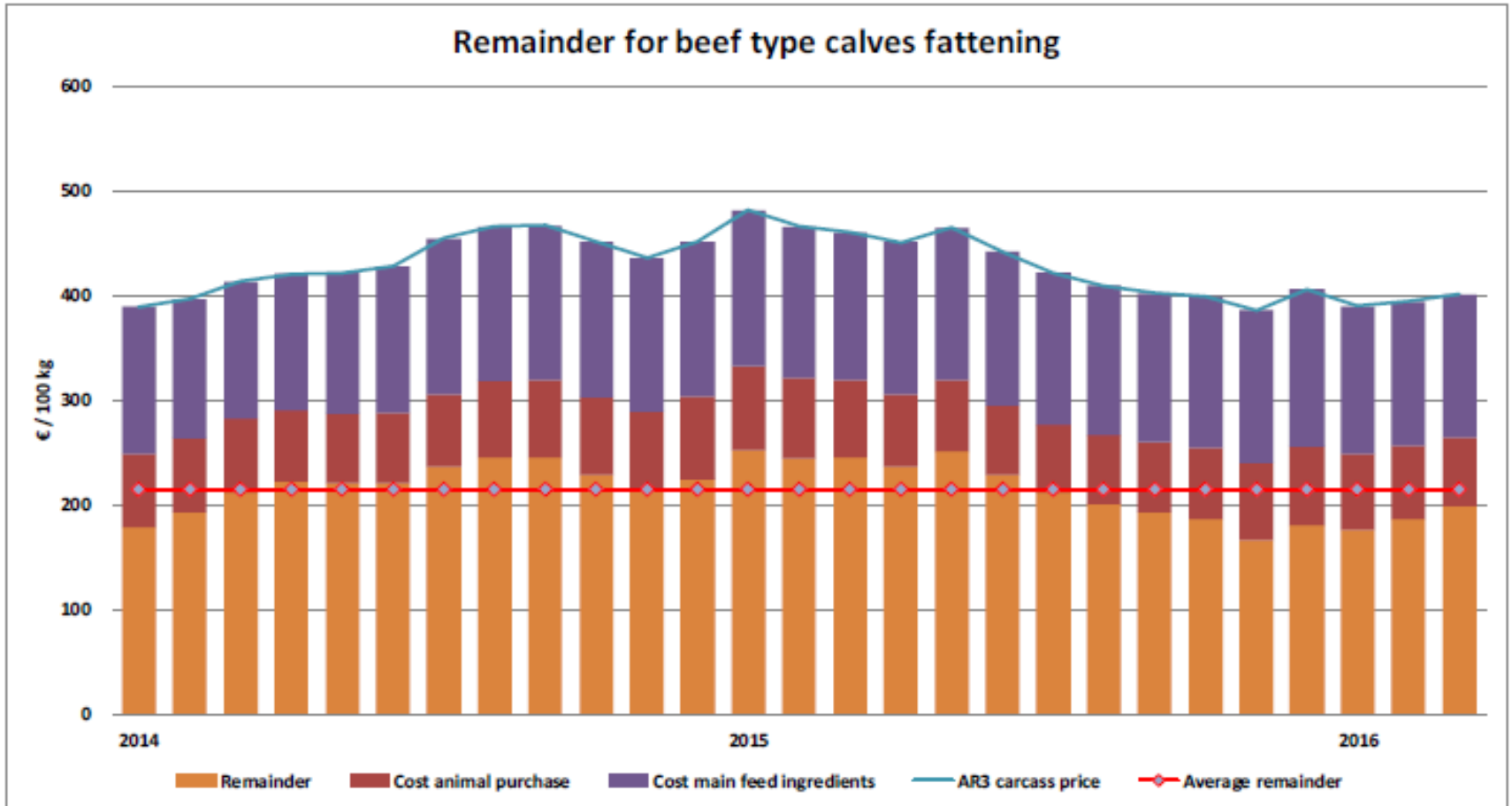
Male Rearing Calves Dairy type

Price in Week 40 81.33
Change y/y -7.40%

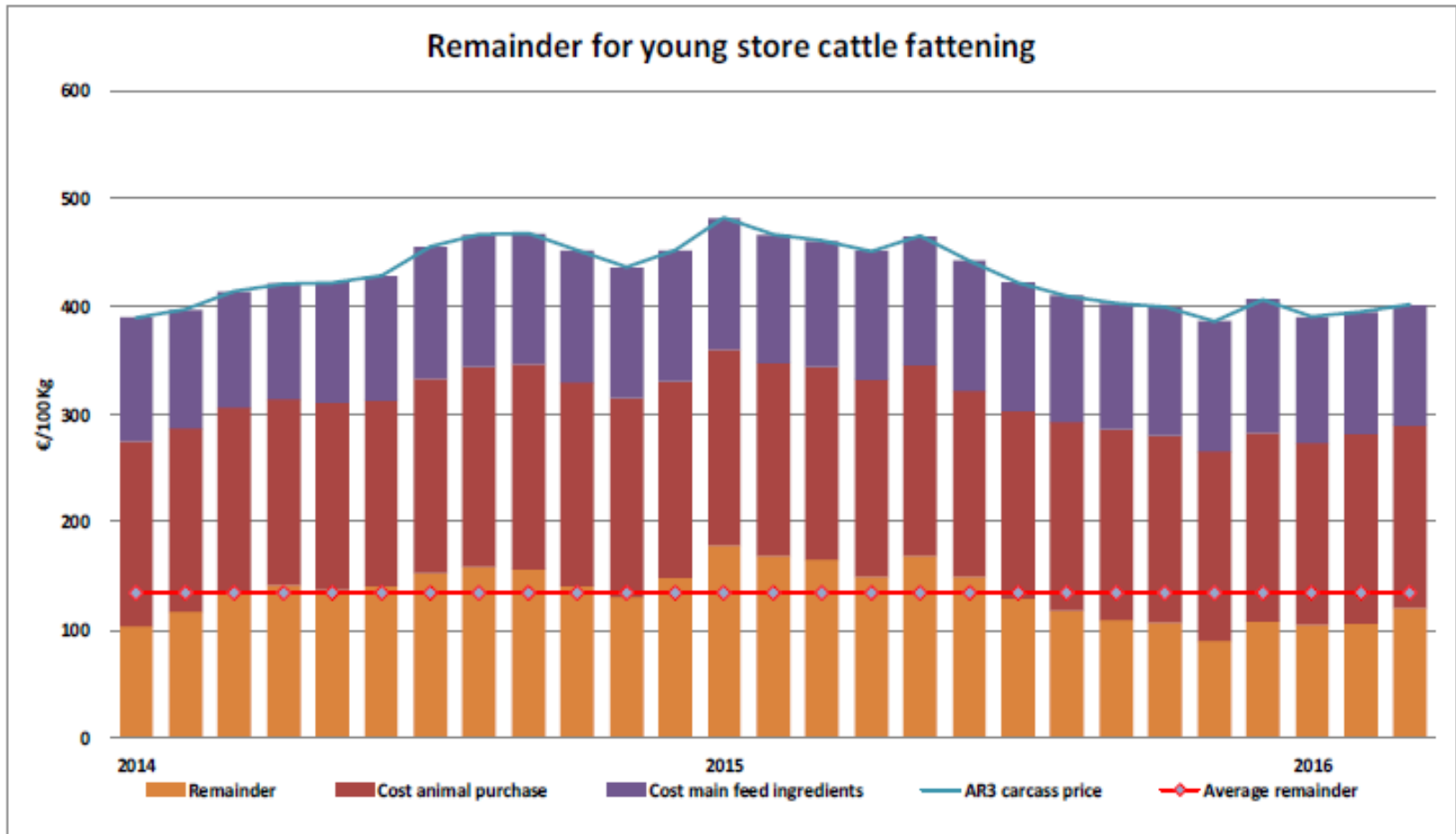
Süt Buzağları Besiciliği İçin Kalanlar



Sığır Tipi Buzağı Besiciliği İçin Kalanlar



Genç Besilik Sığır Besiciliği İçin Kalanlar



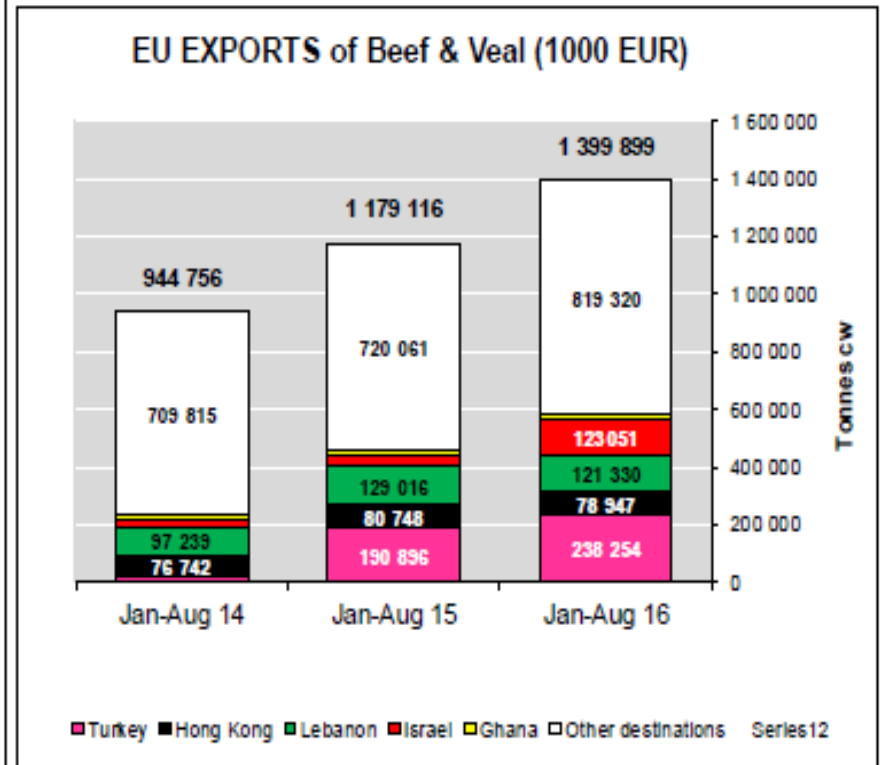
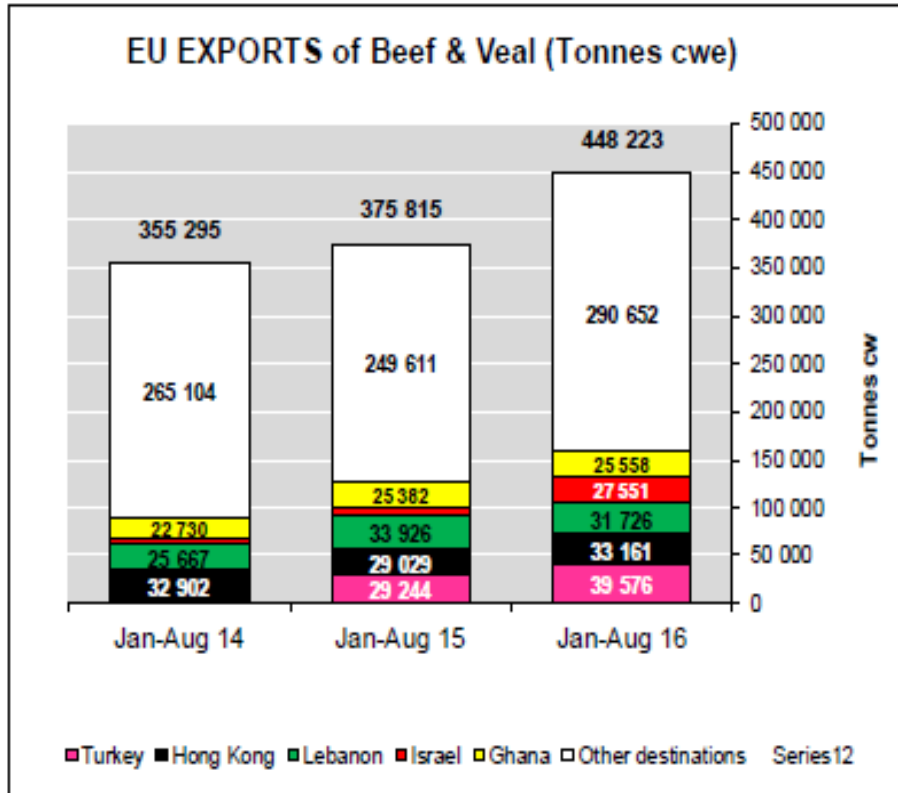


AB siğir eti ve canlı hayvan ihracatı (1): Pazar Rakamları (COMEXT – ton ca)

Destinations	2012		2013		2014		2015		Jan-Aug 16		Compared to Jan-Aug 15
	tonnes	%	tonnes	%	tonnes	%	tonnes	%	tonnes	%	
Turkey	101 475	19.6%	5 086	1.1%	8 098	1.4%	57 584	9.6%	39 576	8.8%	+ 35.3%
Hong Kong	17 862	3.4%	28 573	6.3%	65 112	11.6%	45 267	7.6%	33 161	7.4%	+ 14.2%
Lebanon	24 099	4.6%	24 007	5.3%	37 984	6.8%	50 287	8.4%	31 726	7.1%	- 6.5%
Israel	8 435	1.6%	9 378	2.1%	8 353	1.5%	18 862	3.1%	27 551	6.1%	+++
Ghana	28 693	5.5%	40 878	9.0%	33 255	5.9%	37 389	6.2%	25 558	5.7%	+ 0.7%
Ivory Coast	15 929	3.1%	21 619	4.8%	28 839	5.2%	35 767	6.0%	23 939	5.3%	+ 6.0%
Bosnia-Herz.	14 893	2.9%	24 068	5.3%	34 104	6.1%	40 031	6.7%	23 798	5.3%	- 5.9%
Libya	10 665	2.1%	17 778	3.9%	14 280	2.6%	19 691	3.3%	20 541	4.6%	+ 87.3%
Switzerland	19 573	3.8%	26 347	5.8%	26 634	4.8%	26 038	4.3%	18 051	4.0%	- 1.8%
Algeria	17 323	3.3%	25 911	5.7%	18 499	3.3%	16 085	2.7%	15 528	3.5%	+ 29.5%
Norway	14 620	2.8%	10 222	2.3%	7 879	1.4%	19 129	3.2%	15 073	3.4%	- 5.7%
Vietnam	3 042	0.6%	3 175	0.7%	6 410	1.1%	11 627	1.9%	13 652	3.0%	+++
Philippines	2 028	0.4%	2 730	0.6%	11 839	2.1%	13 116	2.2%	12 607	2.8%	+ 60.1%
Egypt	1 305	0.3%	2 592	0.6%	2 763	0.5%	9 835	1.6%	11 752	2.6%	+ 82.1%
Russia	97 828	18.9%	72 281	16.0%	96 928	17.3%	13 643	2.3%	8 464	1.9%	+ 21.5%
For.JRep.Mac	11 321	2.2%	10 577	2.3%	11 370	2.0%	12 562	2.1%	7 985	1.8%	- 3.5%
China	5 119	1.0%	7 228	1.6%	8 244	1.5%	8 576	1.4%	7 807	1.7%	+ 57.7%
Other Destinations	129 605	25.0%	127 315	28.1%	146 892	26.3%	172 539	28.8%	119 263	26.6%	
Extra-EU	518 694		452 537		559 238		599 454		448 223		
% change			- 13%		+ 24%		+ 7%		+ 19.3%		



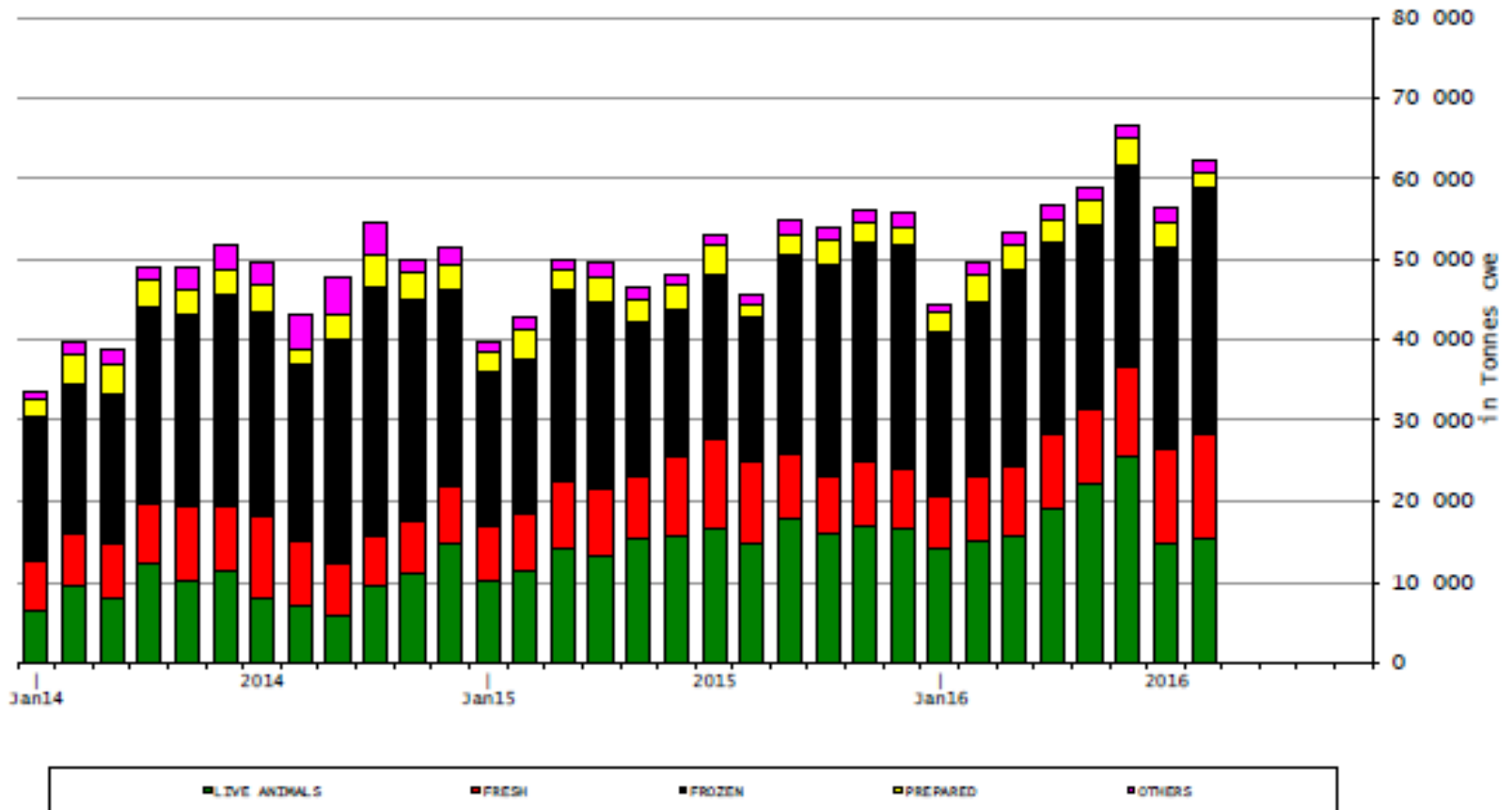
AB Sığır Eti ve Canlı Hayvan İhracat Pazar Rakamları (COMEXT)





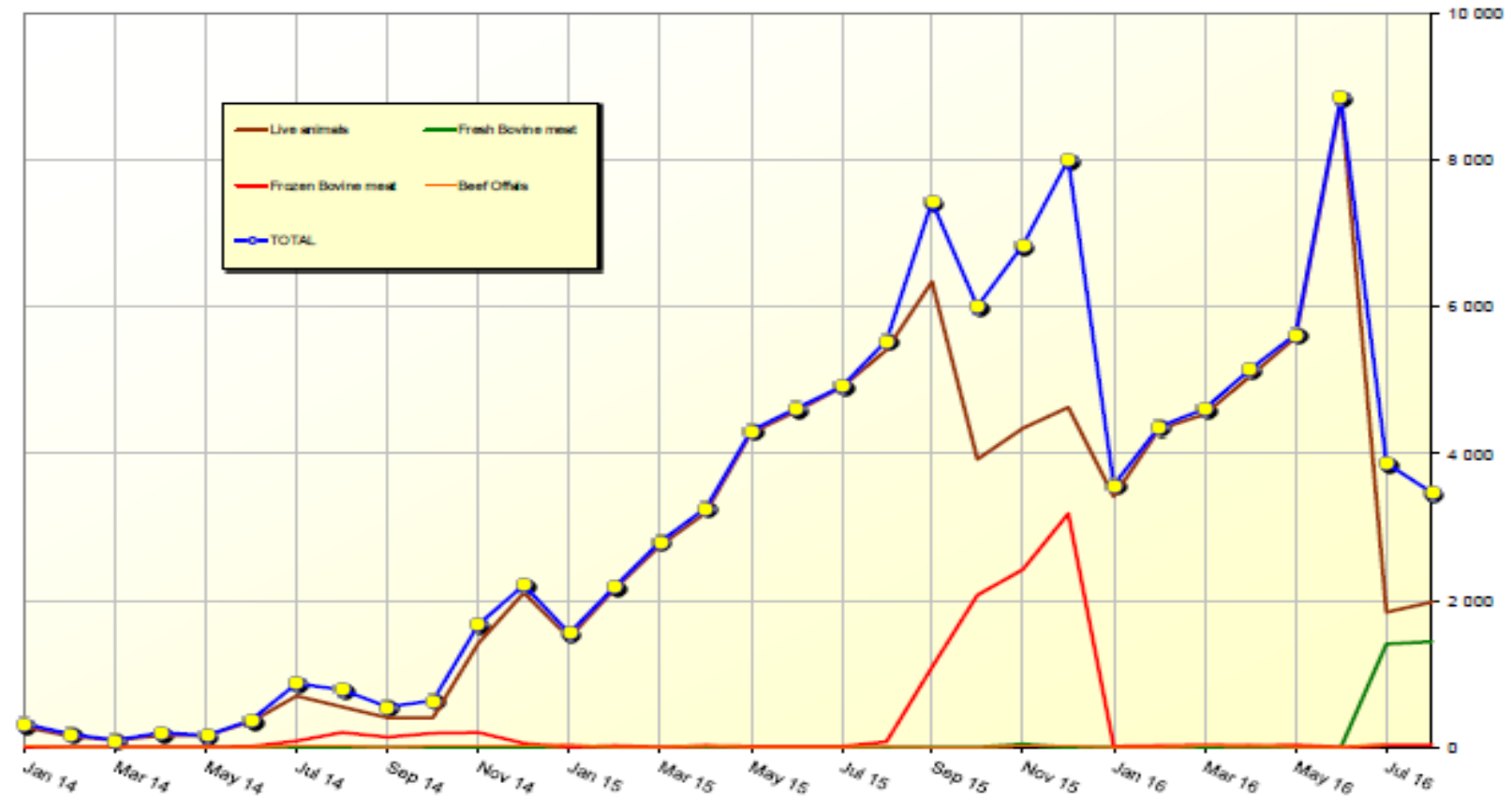
European
Commission

AB 28 – Sığır Eti İhracatları

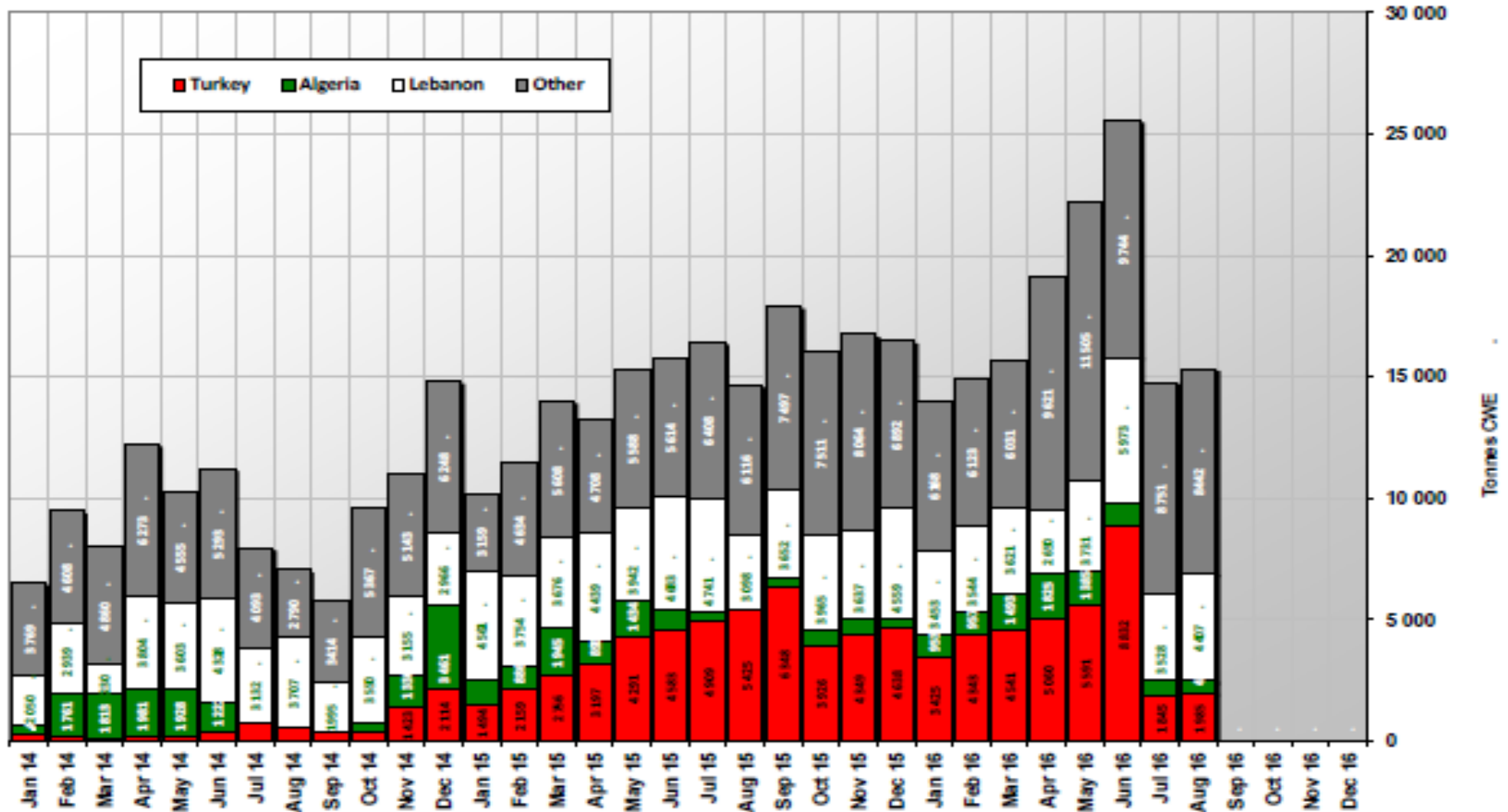




AB'nin Türkiye 'ye Sığır Eti İhracatı Pazar Rakamları (COMEXT data) *ton ca*



AB - 28 Sığır Eti Büyükbaş Canlı Hayvan İhracatı



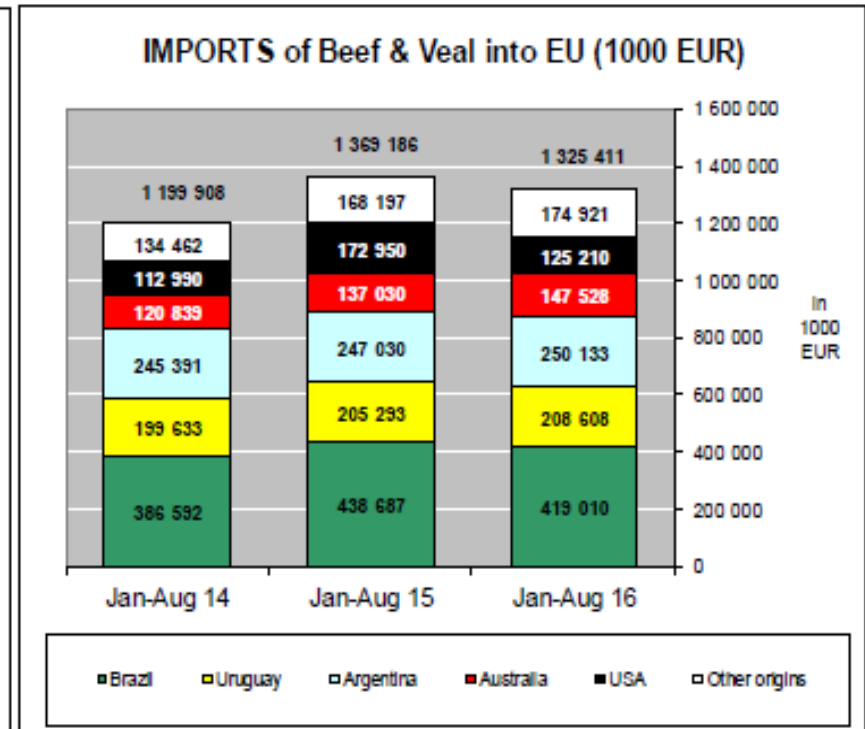
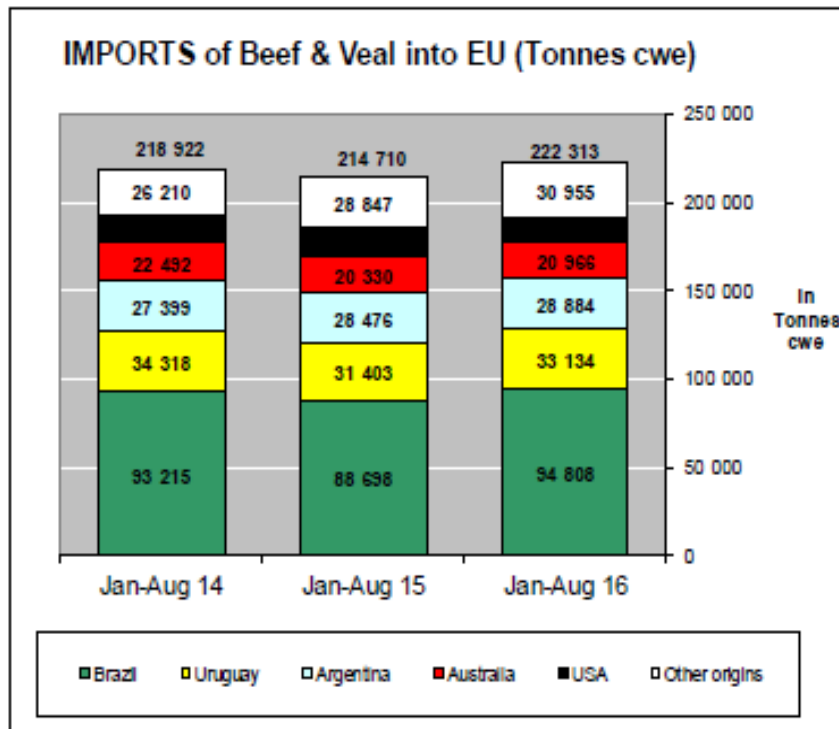
European
Commission

AB Sığır Eti ve Canlı Hayvan İthalatları (1): Ticaret Verileri (COMEXT – ton ca)

Origins	2012		2013		2014		2015		Jan-Aug 16		Compared to Jan-Aug 15
	tonnes	%	tonnes	%	tonnes	%	tonnes	%	tonnes	%	
Brazil	126 344	41.1%	145 435	43.5%	144 259	43.4%	136 705	42.4%	94 808	42.6%	+ 6.9%
Uruguay	51 996	16.9%	51 377	15.4%	49 043	14.8%	46 301	14.3%	33 134	14.9%	+ 5.5%
Argentina	51 893	16.8%	47 978	14.3%	42 074	12.7%	42 135	13.1%	28 884	13.0%	+ 1.4%
Australia	21 290	6.9%	28 074	8.4%	32 653	9.8%	30 879	9.6%	20 966	9.4%	+ 3.1%
USA	21 095	6.9%	22 297	6.7%	23 234	7.0%	24 075	7.5%	13 566	6.1%	- 20.0%
Namibia	8 848	2.9%	11 113	3.3%	9 994	3.0%	12 140	3.8%	7 706	3.5%	- 7.1%
New Zealand	15 181	4.9%	13 827	4.1%	14 432	4.3%	11 369	3.5%	7 249	3.3%	- 13.3%
Botswana	474	0.2%	6 280	1.9%	6 424	1.9%	9 258	2.9%	6 271	2.8%	- 3.2%
Paraguay	101	0.0%	0	0.0%	0	0.0%	1 915	0.6%	4 171	1.9%	+++
Switzerland	4 946	1.6%	4 284	1.3%	5 456	1.6%	5 089	1.6%	3 431	1.5%	+ 10.1%
Chile	1 711	0.6%	537	0.2%	875	0.3%	710	0.2%	443	0.2%	- 13.4%
Serbia	641	0.2%	619	0.2%	425	0.1%	439	0.1%	331	0.1%	+ 11.3%
Canada	825	0.3%	965	0.3%	780	0.2%	428	0.1%	268	0.1%	- 16.2%
Japan	0	0.0%	3	0.0%	100	0.0%	216	0.1%	231	0.1%	+ 21.5%
Norway	159	0.1%	201	0.1%	347	0.1%	480	0.1%	192	0.1%	- 51.4%
Hong Kong	10	0.0%	0	0.0%	0	0.0%	0	0.0%	175	0.1%	+++
Ukraine	0	0.0%	0	0.0%	570	0.2%	20	0.0%	108	0.0%	+++
Other Origins	2 392	0.8%	1 640	0.5%	1 695	0.5%	596	0.2%	380	0.2%	
Extra-EU	307 707		334 630		332 361		322 753		222 313		
% change			+ 9%		- 1%		- 3%		+ 3.5%		

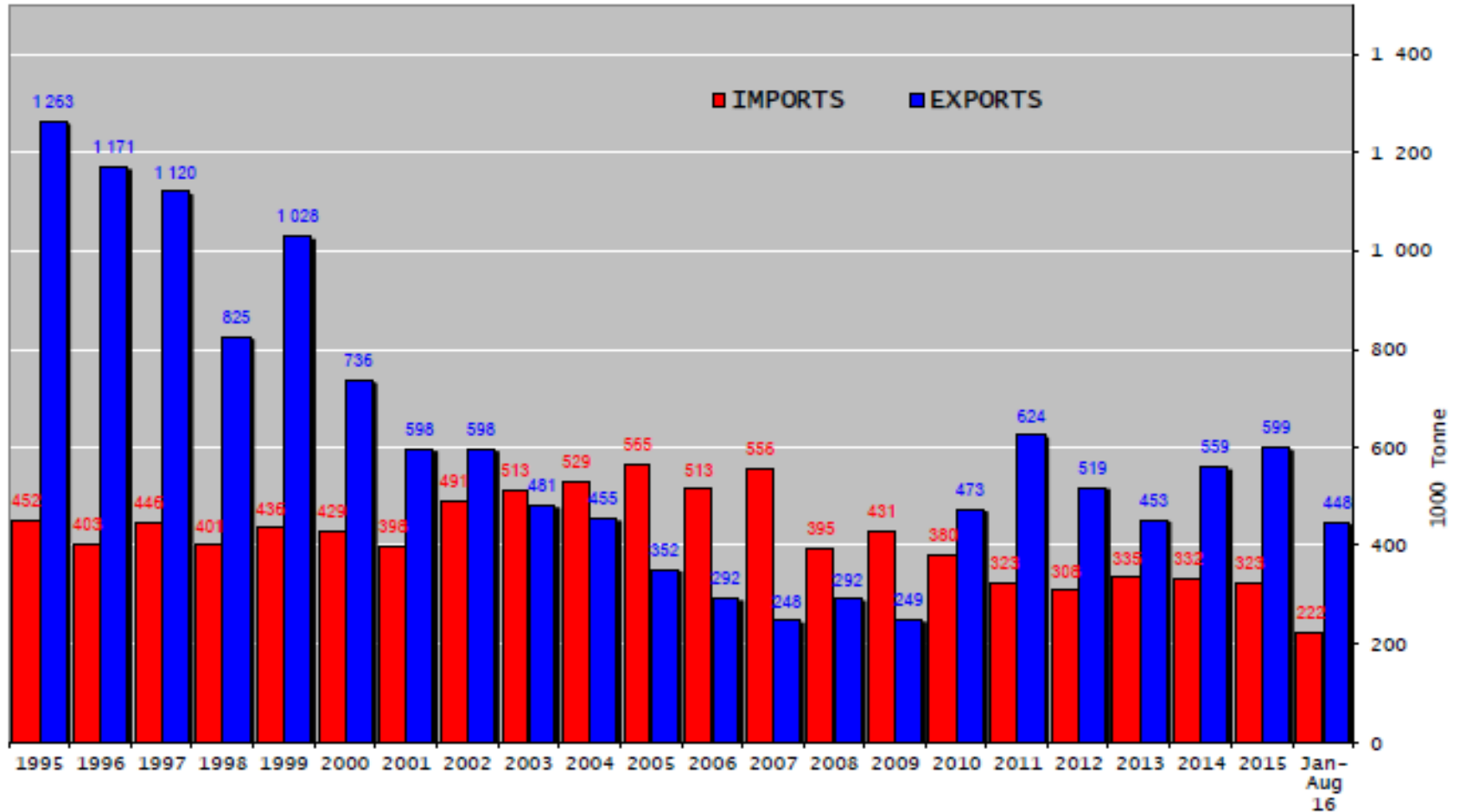


AB Siğir Eti ve Canlı Hayvan İthalatları (2) Ticaret Verileri (COMEXT)



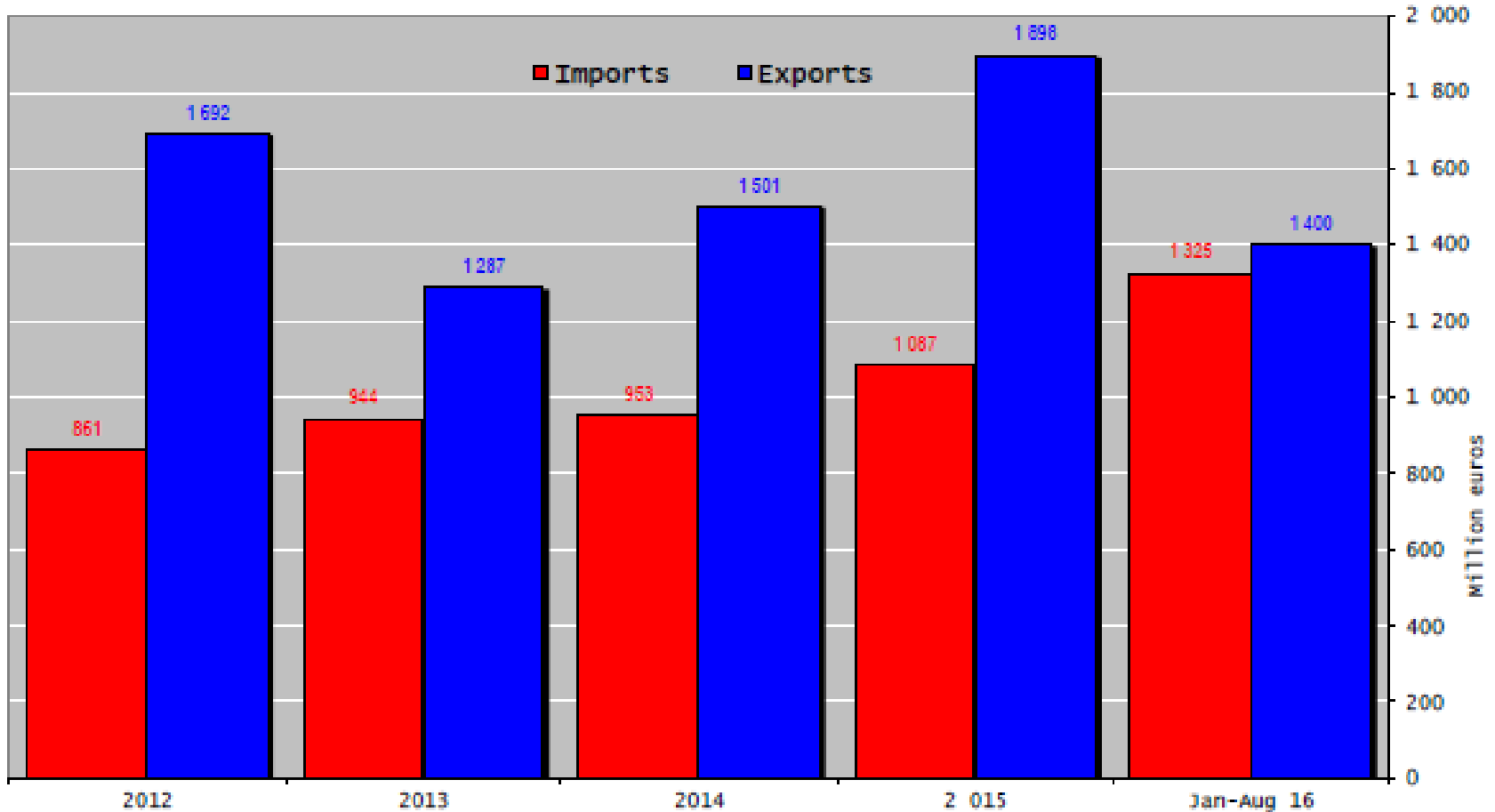


Siğir Eti ve Canlı Hayvan Ticaret Dengesi



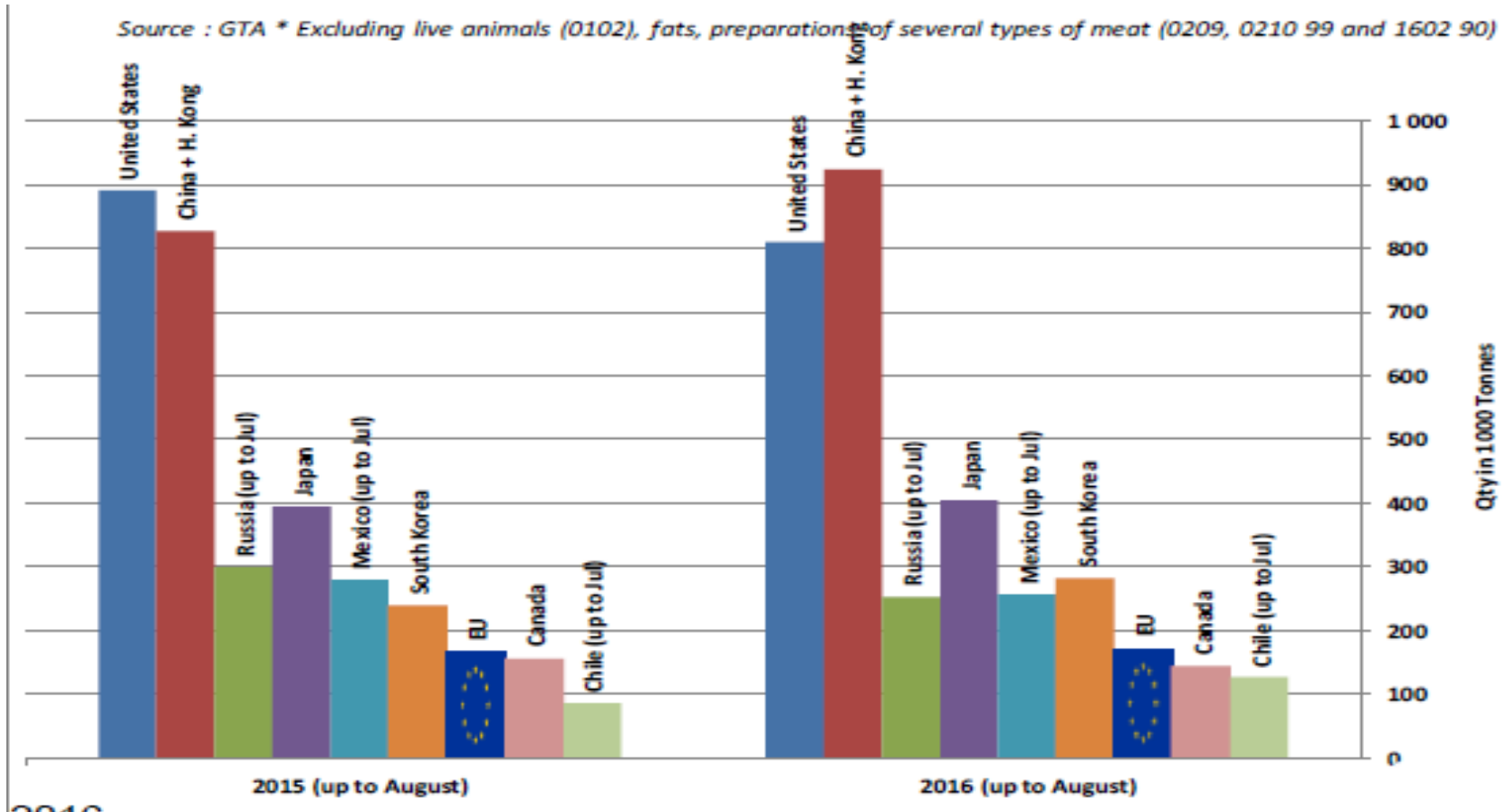


Siğir Eti ve Canlı Hayvan Ticaret Dengesi





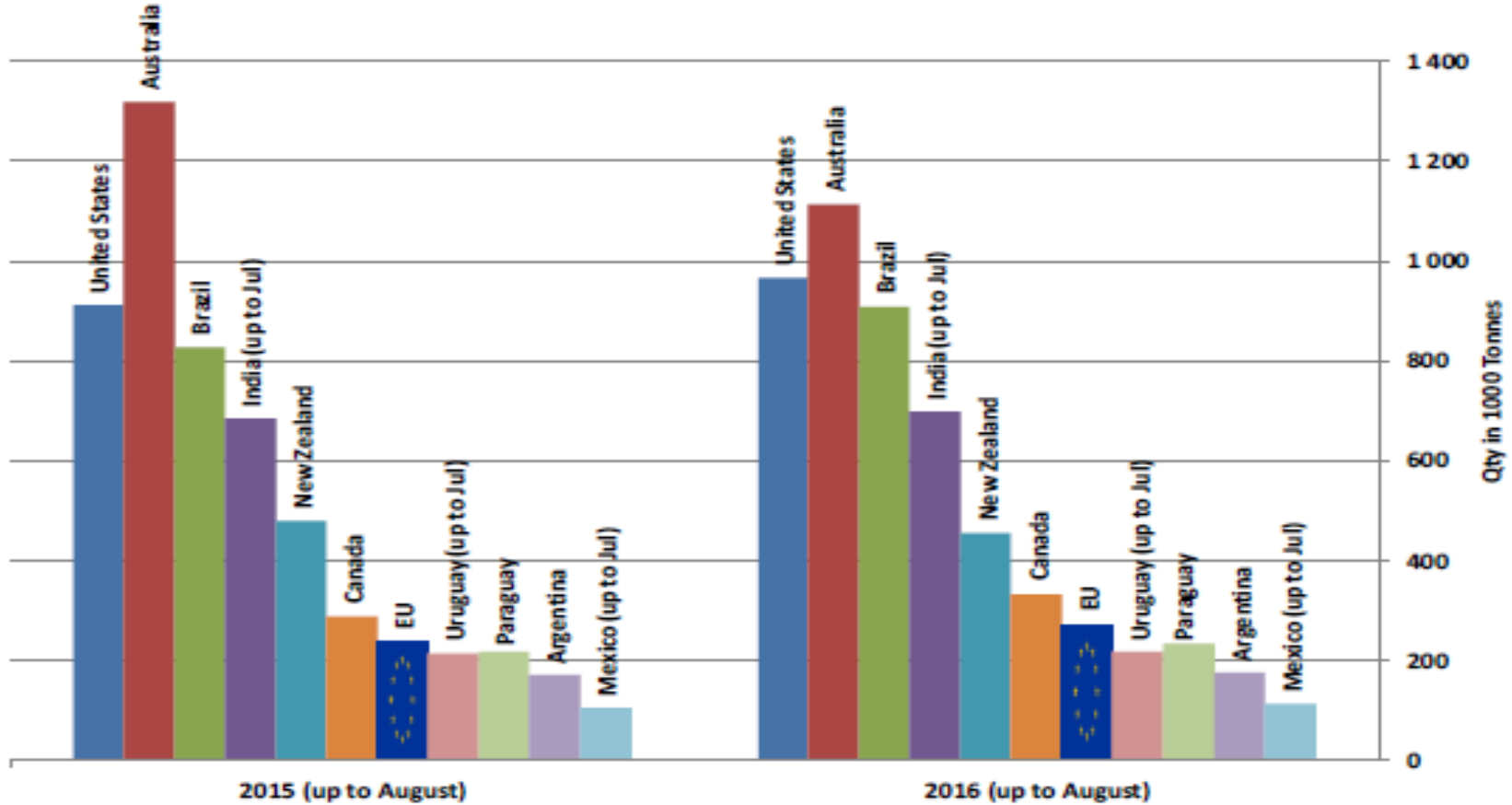
SIĞIR ETİ ÜRÜNLERİNİN NET İTHALATÇILARI (AĞUSTOS AYINA KADAR)





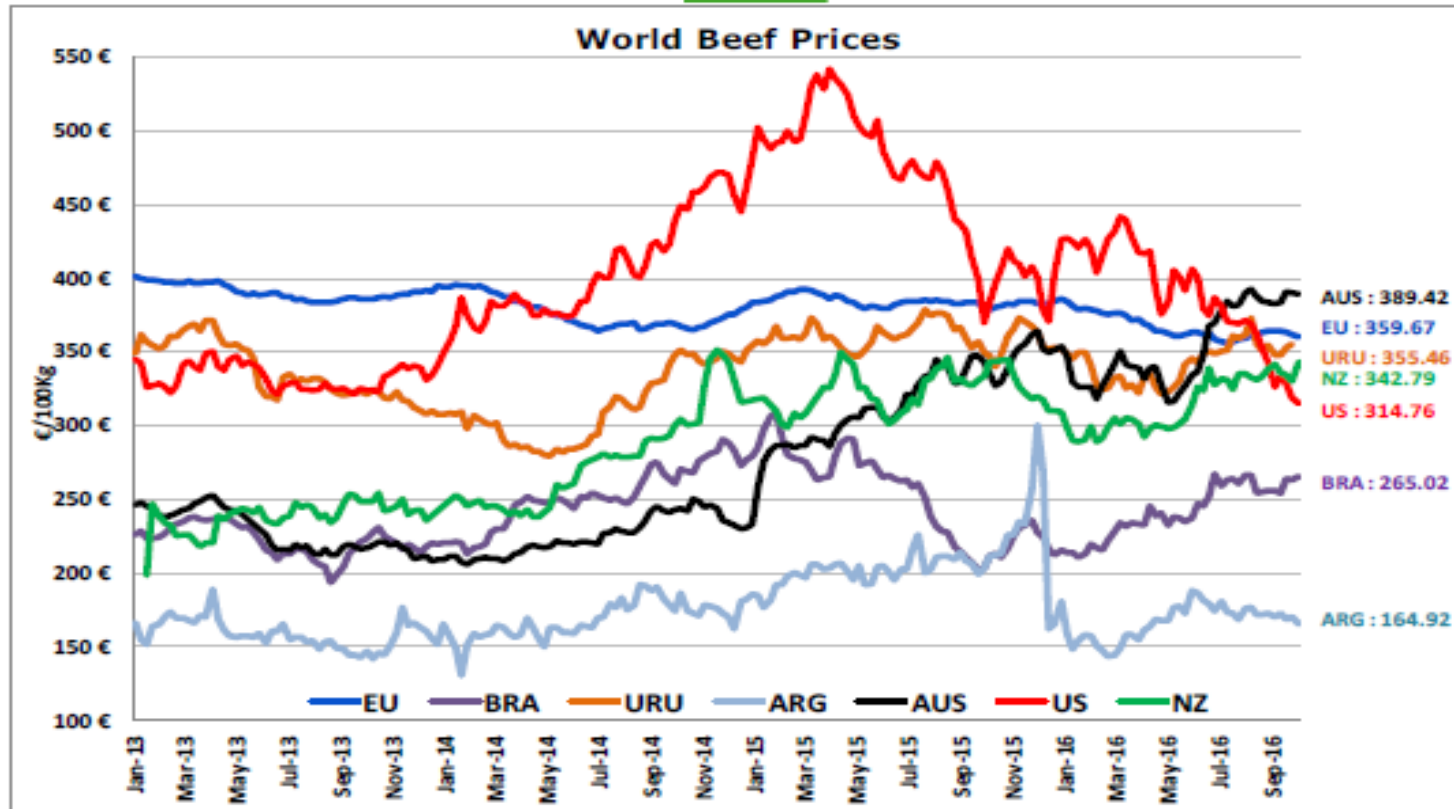
SIĞIR ETİ ÜRÜNLERİNİN NET İHRACATÇILARI (AĞUSTOS AYINA KADAR)

Source : GTA * Excluding live animals (0102), fats, preparations of several types of meat (0209, 0210 99 and 1602 90)





European
Commission



ECB <http://sdw.ecb.europa.eu/browse.do?node=2018794>

US <https://www.marketnews.usda.gov/mnp/ls-home>

AUS <http://statistics.mla.com.au/Report/RunReport/ae59d4ac-74e4-4c56-93bd-982a044d9760>

UY <http://www.inac.gub.uy/innovaportal/v/11034/10/innova.front/indicadores-y-precios>

ARG http://www.abc-consorcio.com.ar/Estadisticas/detalle/117/precios_comparativos_del_novillo.html

BR <http://www.pecuaria.com.br/cotacoes.php>

NZ http://www.abc-consorcio.com.ar/Estadisticas/detalle/117/precios_comparativos_del_novillo.html