



AB SIĞIR VE DANA ETİ PAZAR DURUMU

17 Kasım 2022

HAYVAN VARLIĞI

HAZİRAN ARAŞTIRMASI



European
Commission

AB DEĞİŞİMİ

TOPLAM BÜYÜKBAŞ

May/Jun 1000 Hd	TOT LIVESTOCK				%Var 2022 2021	BOVINE < 1 Year				%Var 2022 2021	BOVINE 1-2 Year				%Var 2022 2021	BOVINE > 2 Year				%Var 2022 2021
	2019	2020	2021	2022		2019	2020	2021	2022		2019	2020	2021	2022		2019	2020	2021	2022	
BE	2 406	2 388	2 353	2 241	-4.8%	706	716	712	656	-7.8%	475	471	473	463	-2.0%	1 226	1 201	1 169	1 121	-4.1%
BG																				
CZ																				
DK	1 512	1 517	1 503	1 484	-1.3%	510	517	517	510	-1.4%	292	291	287	290	+1.0%	710	709	699	684	-2.1%
DE	11 763	11 423	11 176	10 986	-1.7%	3 502	3 410	3 398	3 296	-3.0%	2 788	2 683	2 591	2 620	+1.1%	5 473	5 330	5 188	5 071	-2.3%
EE																				
IE	7 209	7 314	7 359	7 396	+0.5%	2 008	2 117	2 146	2 134	-0.5%	1 861	1 807	1 910	1 949	+2.0%	3 340	3 390	3 303	3 313	+0.3%
EL																				
ES	6 722	6 715	6 923	6 740	-2.6%	2 507	2 488	2 634	2 552	-3.1%	978	930	973	907	-6.8%	3 237	3 297	3 316	3 281	-1.1%
FR	18 470	18 200	17 863	17 416	-2.5%	5 227	5 144	5 134	4 949	-3.6%	3 229	3 249	3 158	3 144	-0.4%	10 014	9 808	9 571	9 323	-2.6%
HR																				
IT	6 016	6 116	6 174	6 087	-1.4%	1 746	1 746	1 762	1 725	-2.1%	1 409	1 458	1 476	1 475	-0.1%	2 861	2 912	2 936	2 887	-1.7%
CY																				
LV																				
LT																				
LU																				
HU																				
MT																				
NL	3 750	3 766	3 732	3 766	+0.9%	1 536	1 558	1 523	1 546	+1.5%	460	446	479	493	+2.9%	1 754	1 762	1 729	1 726	-0.2%
AT	1 873	1 844	1 846	1 842	-0.2%	596	588	596	592	-0.6%	425	416	413	422	+2.2%	853	841	838	828	-1.1%
PL	6 358	6 344	6 401	6 444	+0.7%	1 771	1 729	1 789	1 916	+7.1%	1 768	1 796	1 856	1 674	-9.8%	2 820	2 819	2 756	2 855	+3.6%
PT	1 712	1 751	1 723	1 680	-2.5%	524	557	550	554	+0.8%	267	264	252	229	-9.2%	921	929	922	897	-2.7%
RO	1 963	1 915	1 864	1 852	-0.6%	428	418	386	379	-1.9%	230	217	207	220	+6.2%	1 305	1 280	1 271	1 254	-1.4%
SI																				
SK																				
FI																				
SE	1 466	1 453	1 453	1 448	-0.3%	451	462	465	458	-1.6%	380	362	369	374	+1.3%	636	629	619	617	-0.2%
EU	71 220	70 747	70 371	69 383	-1.4%	21 512	21 451	21 612	21 268	-1.6%	14 559	14 389	14 444	14 260	-1.3%	35 149	34 907	34 315	33 856	-1.3%
UK	9 739	9 615				2 857	2 878				2 448	2 412				4 434	4 324			

Source: E-Stat Newscross

EU %Var is calculated considering only countries available in 2021 AND 2022

HAYVAN VARLIĞI

HAZİRAN ARAŞTIRMASI



AB DEĞİŞİMİ

İNEKLER

May/Jun 1000 Hd	TOTAL COWS				%Var 2022 2021	DAIRY COWS				%Var 2022 2021	OTHER COWS				%Var 2022 2021
	2019	2020	2021	2022		2019	2020	2021	2022		2019	2020	2021	2022	
BE	960	954	937	902	-3.7%	536	544	539	527	-2.2%	425	409	399	375	-5.8%
BG															
CZ															
DK	654	653	647	634	-2.0%	567	567	565	557	-1.4%	87	86	82	77	-6.1%
DE	4 720	4 609	4 517	4 430	-1.9%	4 067	3 969	3 892	3 817	-1.9%	653	640	626	612	-2.1%
EE															
IE	2 505	2 551	2 545	2 541	-0.2%	1 505	1 568	1 605	1 627	+1.4%	1 000	983	940	913	-2.9%
EL															
ES	2 854	2 927	2 987	2 948	-1.3%	815	810	828	892	+7.7%	2 039	2 117	2 159	2 056	-4.8%
FR	7 546	7 442	7 315	7 159	-2.1%	3 471	3 403	3 331	3 266	-1.9%	4 075	4 039	3 984	3 893	-2.3%
HR															
IT															
CY															
LV															
LT															
LU															
HU															
MT															
NL	1 641	1 651	1 627	1 623	-0.2%	1 578	1 593	1 571	1 571	-0.0%	63	58	56	53	-5.6%
AT	726	716	715	710	-0.7%	525	523	531	549	+3.4%	201	193	184	161	-12.5%
PL	2 461	2 468	2 388	2 208	-7.6%	2 221	2 218	2 113	1 852	-12.4%	240	250	276	356	+28.9%
PT	742	757	757	742	-2.0%	238	239	236	227	-3.8%	504	517	521	515	-1.2%
RO	1 179	1 160	1 148	1 135	-1.2%	1 162	1 145	1 133	1 119	-1.3%	17	15	15	16	+7.3%
SI															
SK															
FI															
SE	516	510	512	510	-0.4%	306	303	302	297	-1.8%	210	207	210	213	+1.6%
EU	28 612	28 528	28 256	27 671	-2.1%	18 831	18 727	18 497	18 121	-2.0%	9 782	9 801	9 760	9 549	-2.2%
UK	3 398	3 359				1 871	1 850				1 527	1 509			

Source : EStat Newcronos

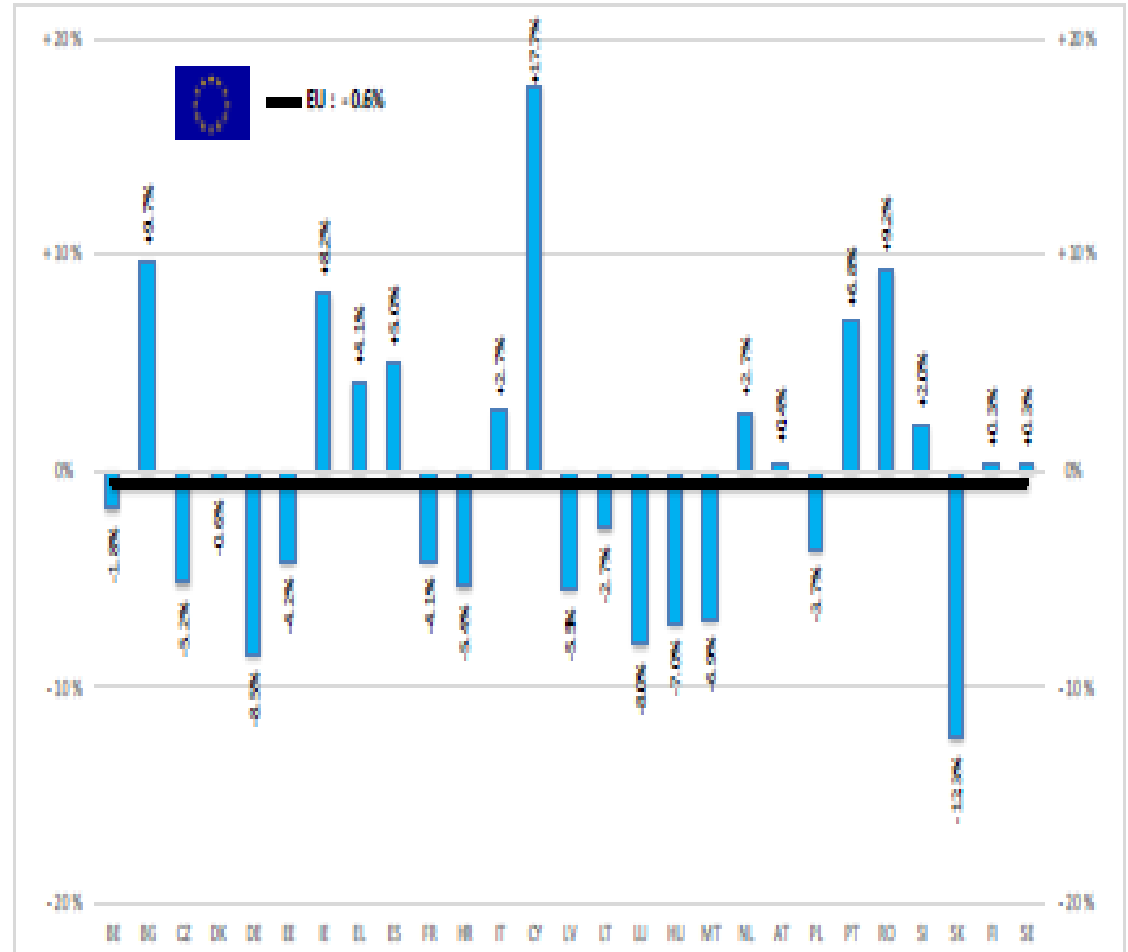
EU %Var is calculated considering only countries available in 2021 AND 2022

Revize



BAŞ	HEADS	Jan-Aug 22/21
	EU	
BOĞA	Bull	-3.5%
ÖKÜZ	Bullock	+4.2%
İNEK	Cow	+0.1%
DÜVE	Heifer	+2.1%
BUZAĞI	Calve	-0.0%
GENÇ SİĞİR	Young cattle	-2.0%
Büyükbaş Hayvan Eti	Meat of bovine animals	-0.6%

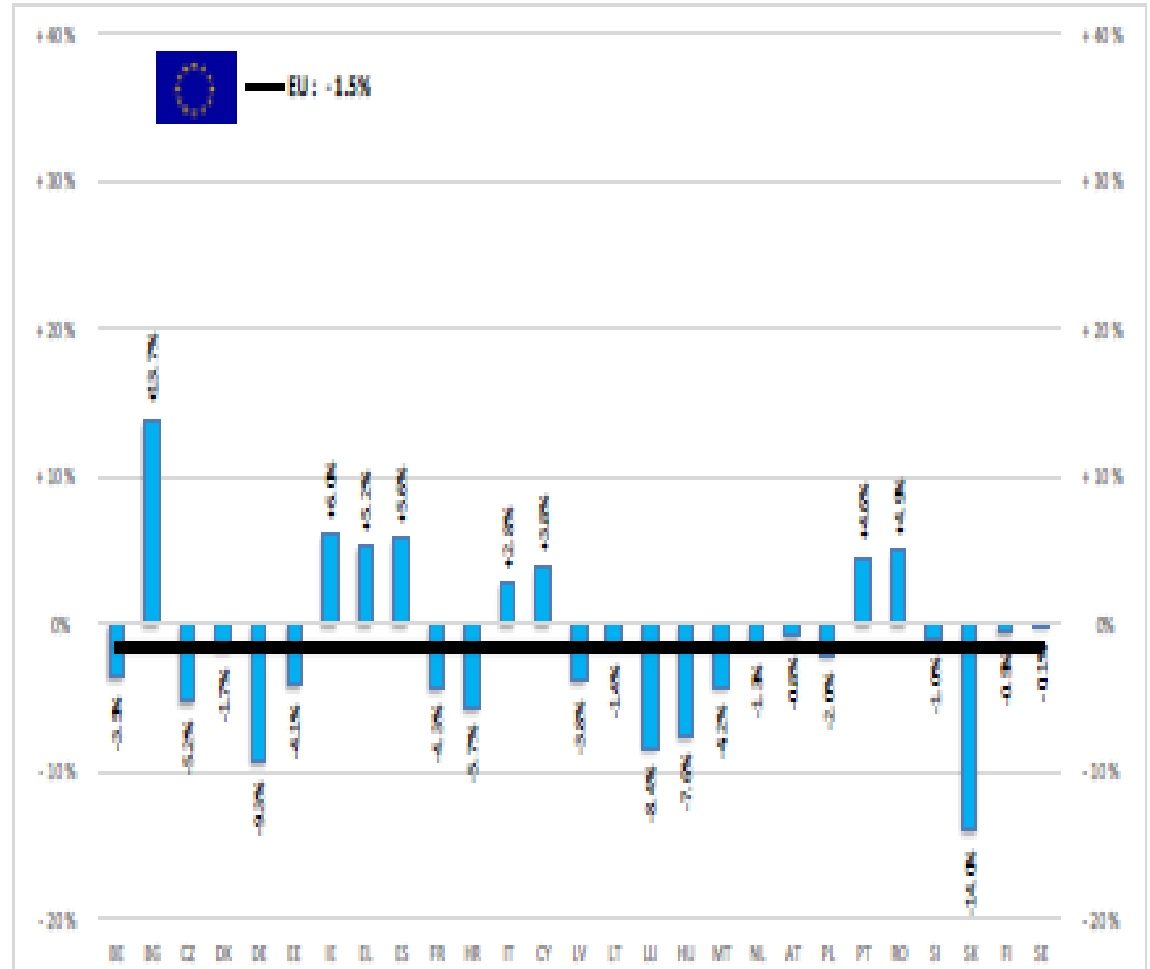
Estimates for last month of period :



Source : EStat - Newcomer

TON	TONNES	Jan-Aug 22/21
		EU
BOĞA	Bull	-3.2%
ÖKÜZ	Bullock	+2.8%
İNEK	Cow	-1.2%
DÜVE	Heifer	+0.9%
BUZAĞI	Calve	-1.2%
GENÇ SİĞİR	Young cattle	-2.4%
Büyükbaş Hayvan Eti	Meat of bovine animals	-1.5%

Estimates for last month of period :

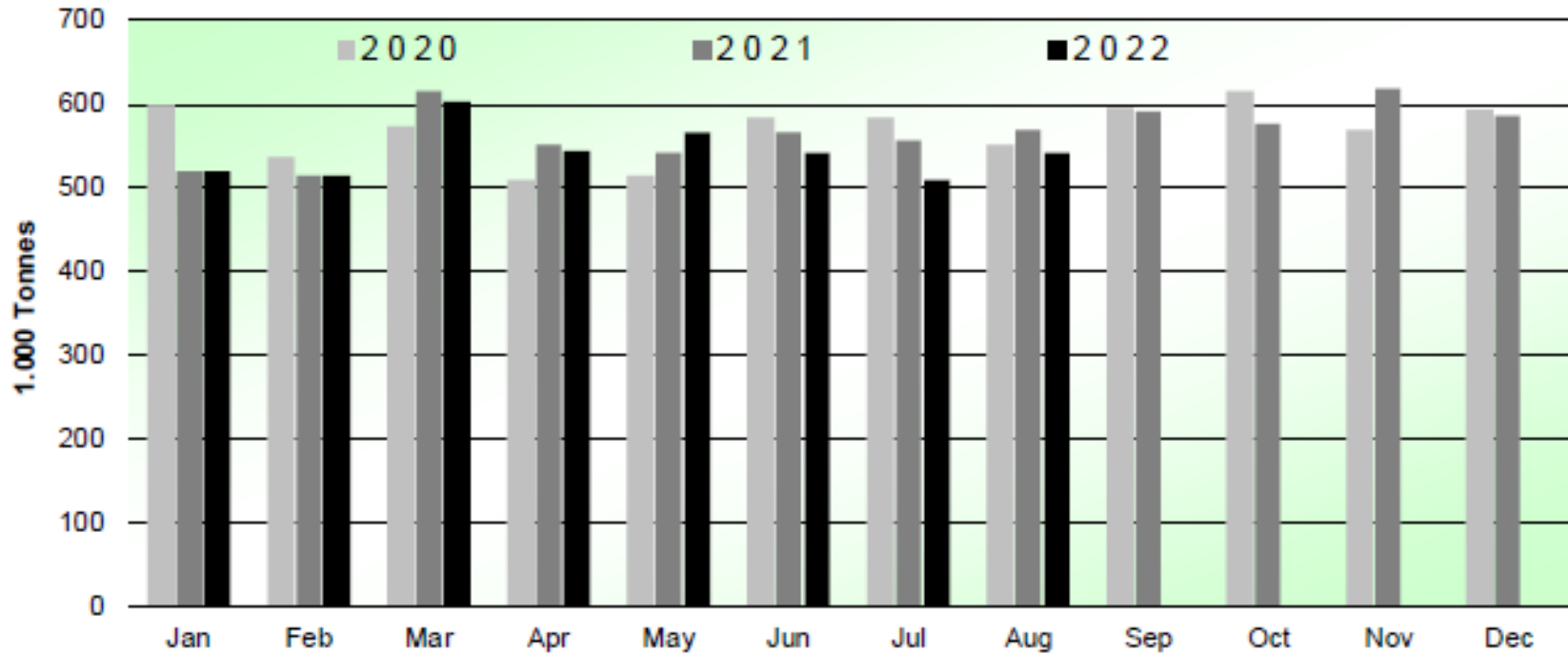


Source : EStat - Newcronis



SIĞIR VE DANA ETİ ÜRETİMİ (AB Kesimler – Ton)

Beef & Veal Production (EU Slaughtering) - Tonnes



Source : EStat-Newcronos



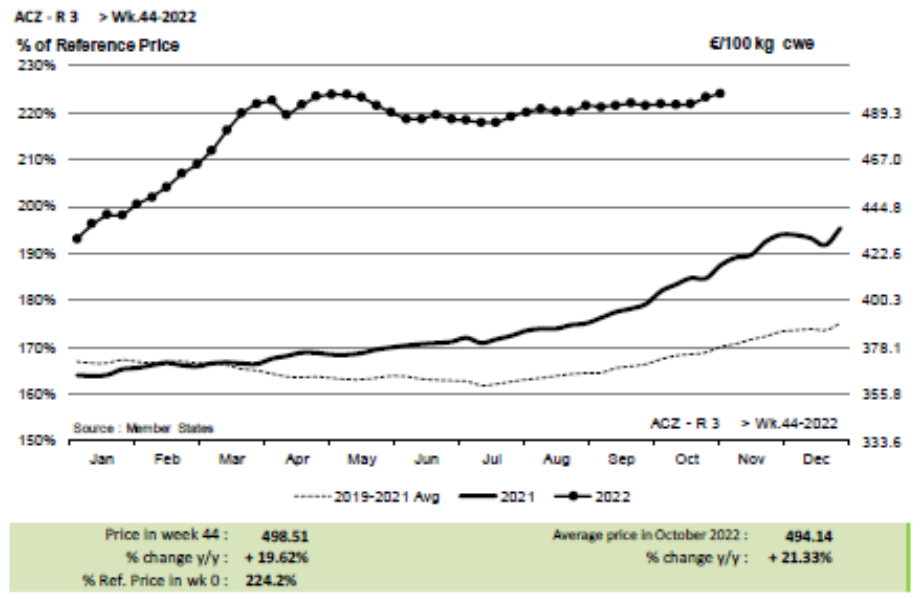
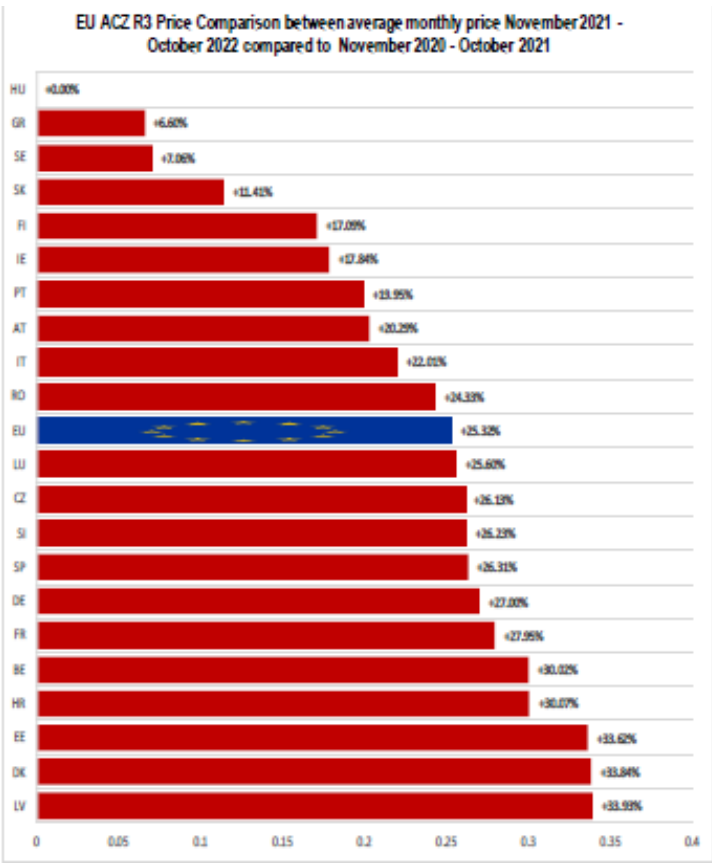
EU Prices week		44	Evolution since last week	Evolution since last month	Evolution since last year
Carcasse	Average A/C/Z -R3	498.5	+ 0.4%	+ 1.0%	+ 19.6%
	Young Bovines (Z)	495.5	- 0.2%	+ 0.4%	+ 22.0%
	Young Bulls (A)	504.0	+ 0.6%	+ 1.8%	+ 20.1%
	Steers (C)	473.1	- 0.1%	- 2.1%	+ 14.4%
	Cows (D)	432.2	+ 0.3%	- 0.1%	+ 25.3%
	Heifers (E)	511.5	+ 0.6%	+ 0.4%	+ 20.5%
	Calves slaughtered <8M	631.0	+ 2.2%	+ 0.5%	+ 14.7%
Live Animals	Male Calves Dairy Type	84.02	- 10.2%	- 1.1%	- 10.9%
	Male Calves Beef Type	220.3	- 1.5%	- 2.4%	+ 6.6%
	Young Store Cattle	3.13	- 0.1%	+ 0.1%	+ 15.9%
	Yearling Male Store Cattle	3.24	- 0.6%	- 2.3%	- 0.8%
	Yearling Female Store Cattle	2.70	- 1.2%	- 2.3%	+ 6.3%

Sources : MSs notifications (Regulation (EU) 1182/2017 and 1184/2017)

KARKAS FİYATLARI

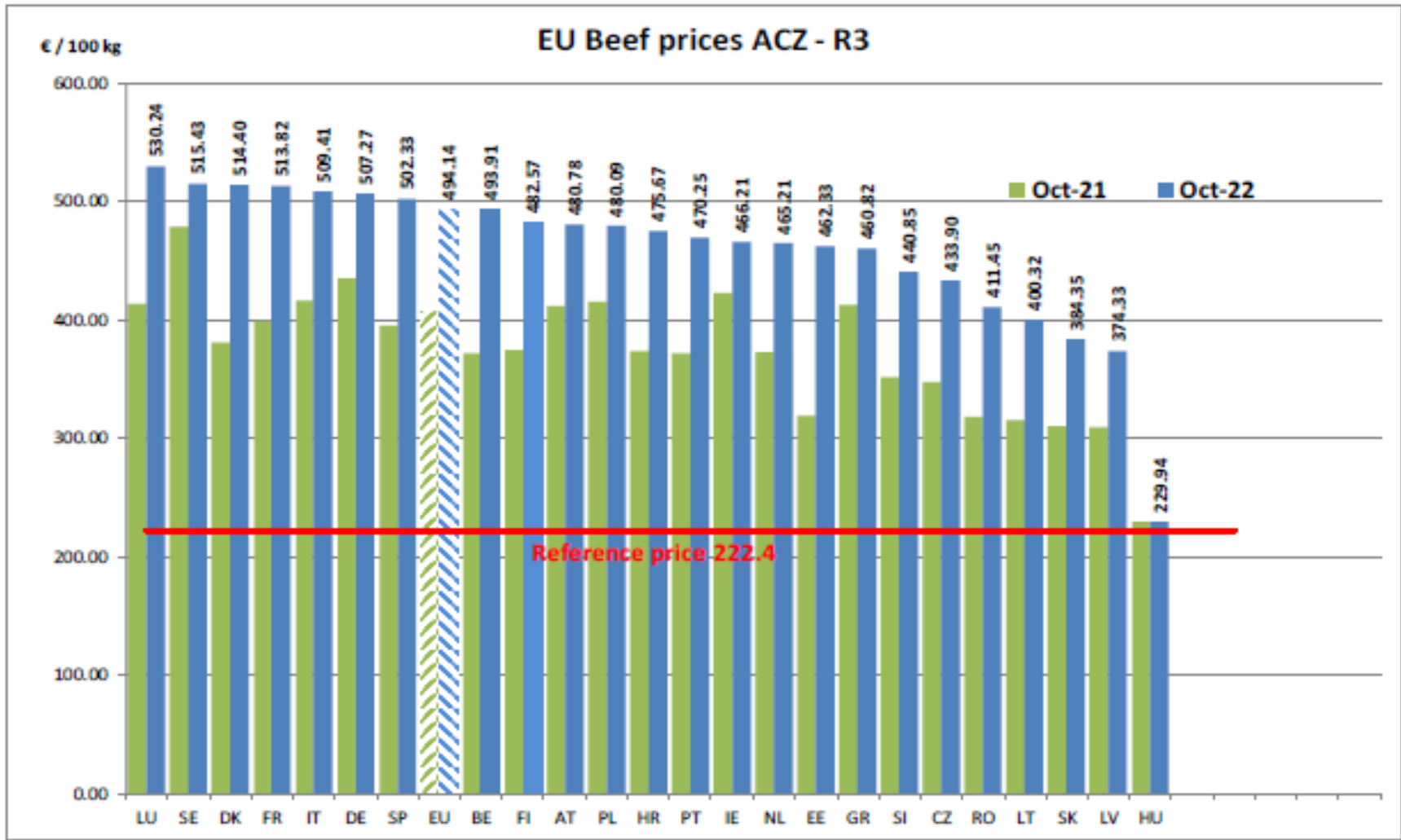


AB DEĞİŞİM A/C/Z. R3



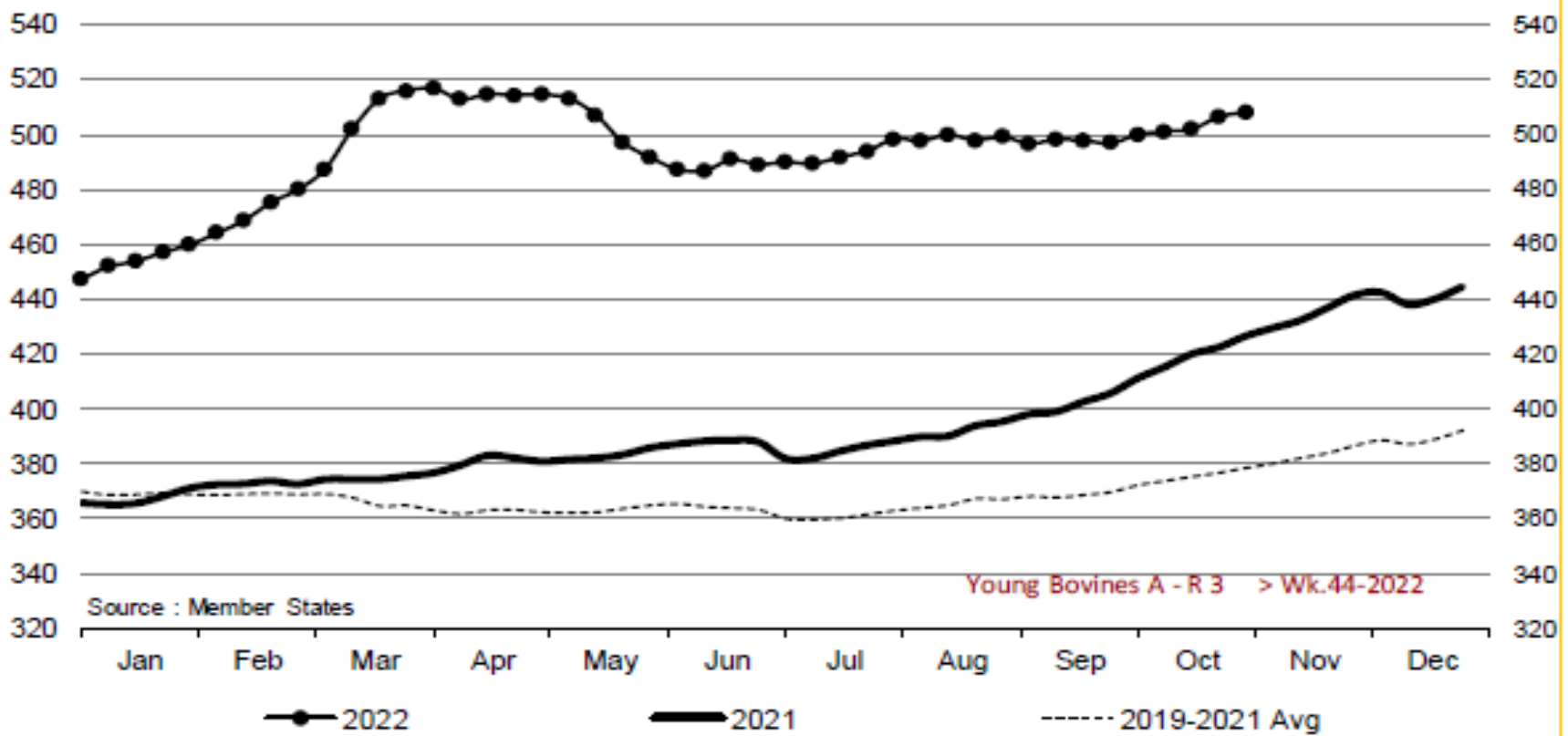
KARKAS FİYATLARI

AB DEĞİŞİM
A/C/Z. R3





Young Bovines A - R 3 > Wk.44-2022



Price in week 44 : 508.08
% change y/y : + 19.1%

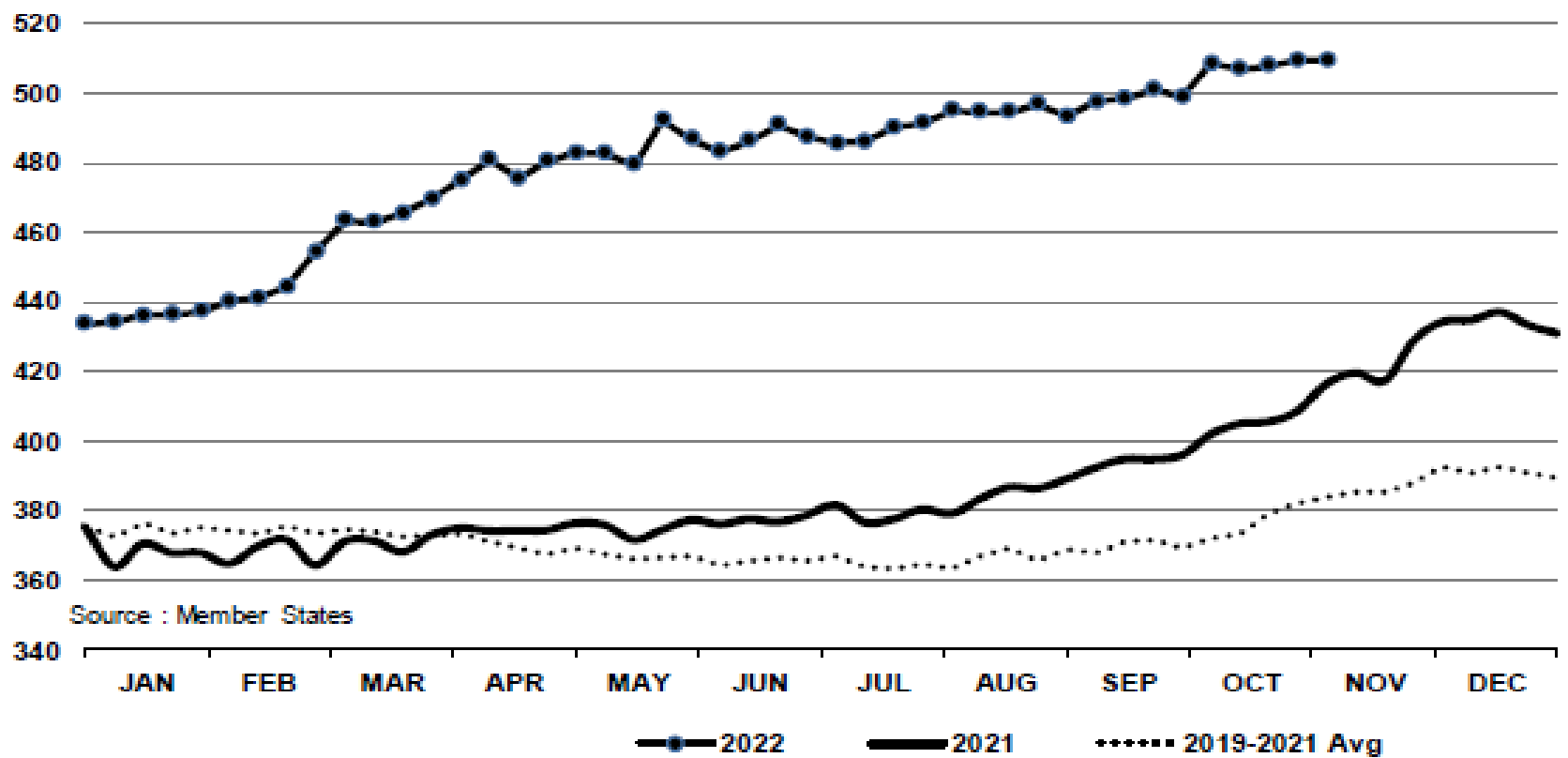
Average price in October 2022 : 502.23
% change y/y : + 20.6%

KARKAS FİYATLARI



AB DEĞİŞİM
GENÇ SIĞIR – 8-12 M
Z.R.3

In € / 100 kg Young Bovines 8-12m Z - R 3 > Wk.44-2022



Source : Member States

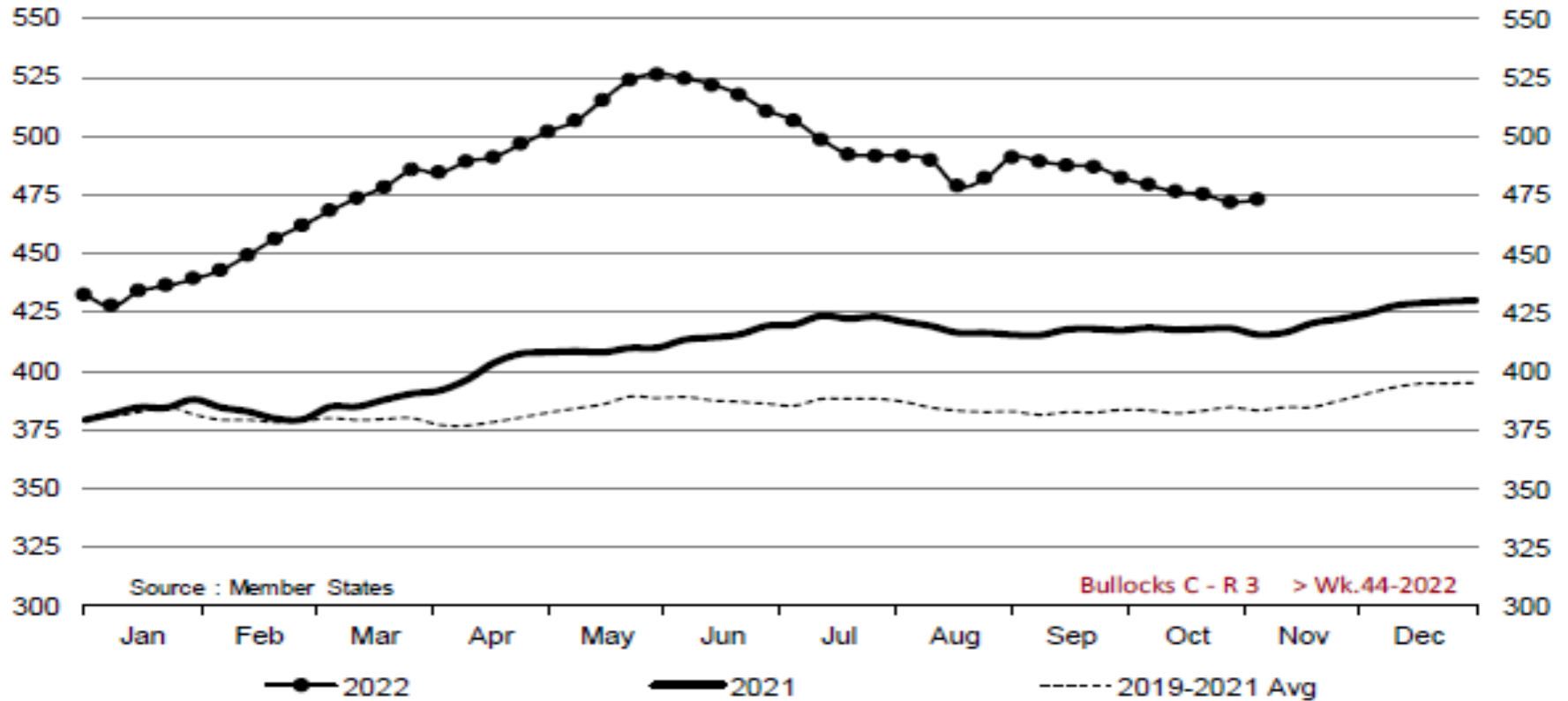
Price in week 44 : 509.35
% change y/y : + 22.3%

06/10/2022

Average price in October 2022 : 507.50
% change y/y : + 25.5%



Bullocks C - R 3 > Wk.44-2022

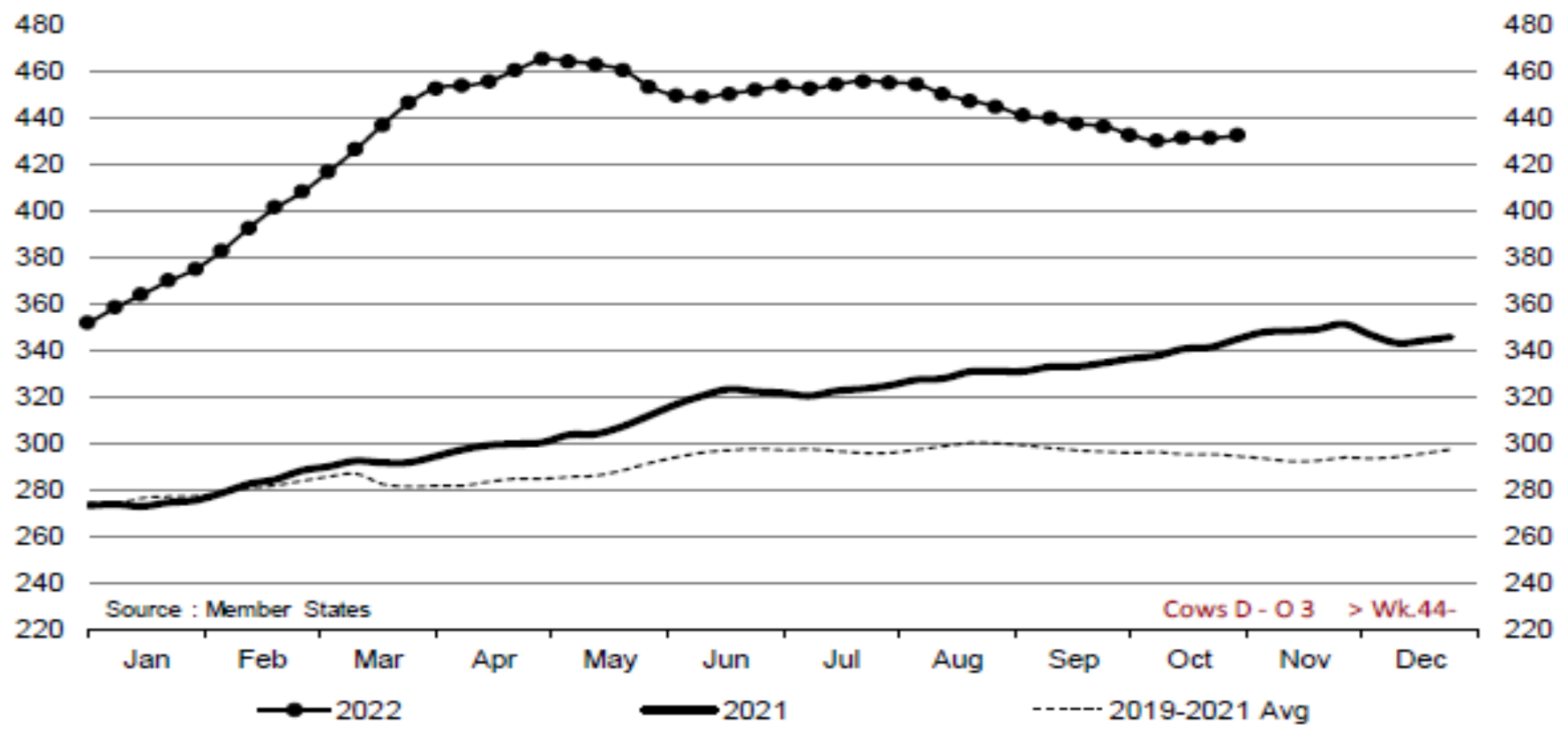


Price in week 44 : 472.89
% change y/y : + 13.9%

Average price in October 2022 : 475.80
% change y/y : + 13.9%



Cows D - O 3 > Wk.44-2022

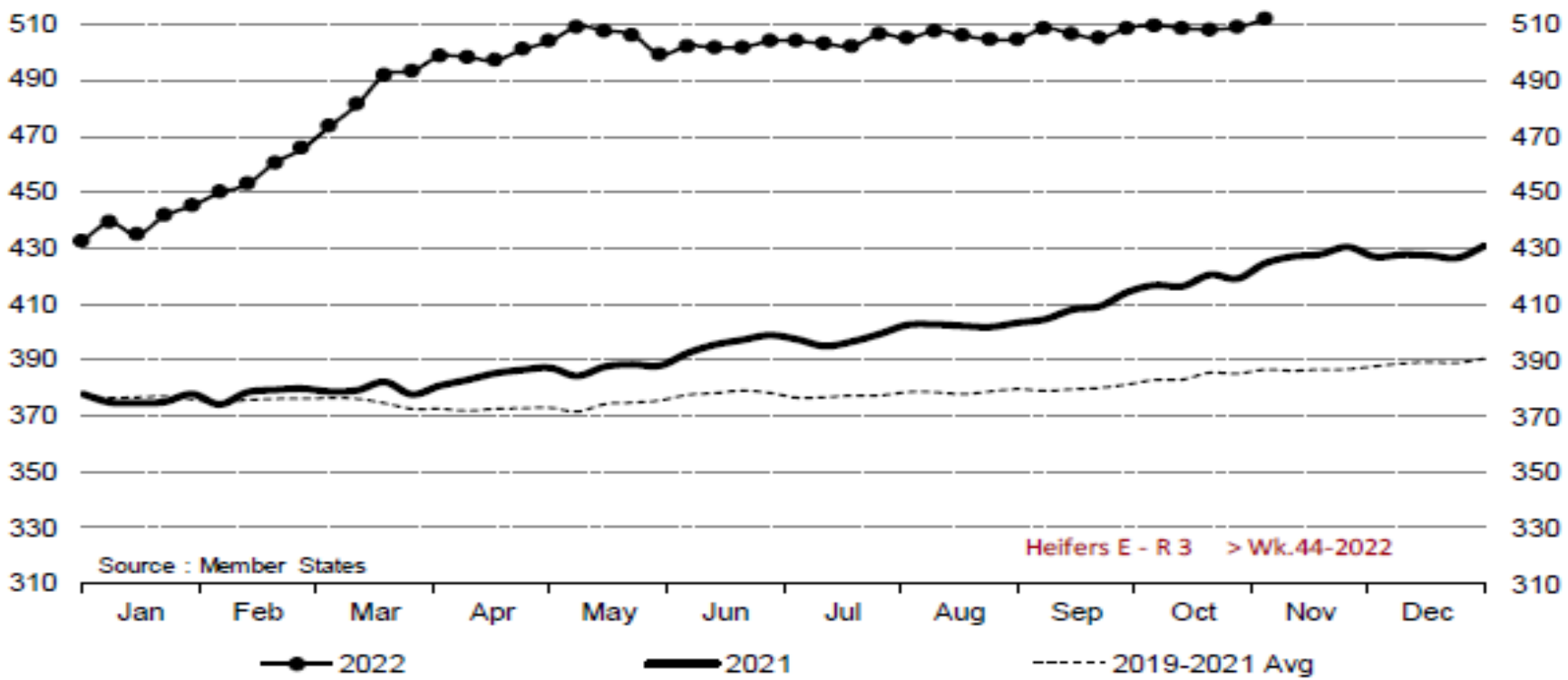


Price in week 44 : 432.23
% change y/y : + 25.3%

Average price in October 2022 : 431.52
% change y/y : + 27.4%



Heifers E - R 3 > Wk.44-2022

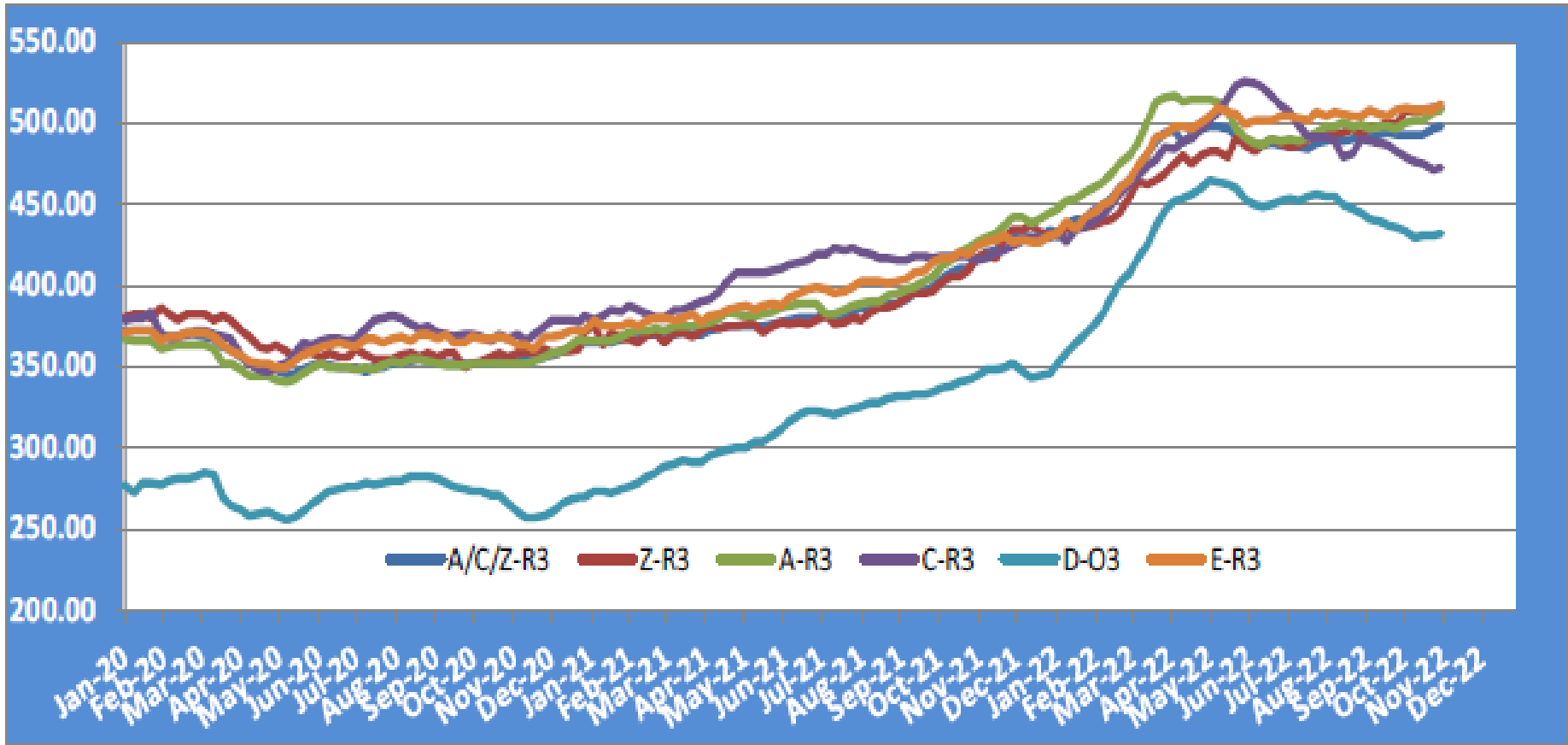


Price in week 44 : 511.52
% change y/y : + 20.5%

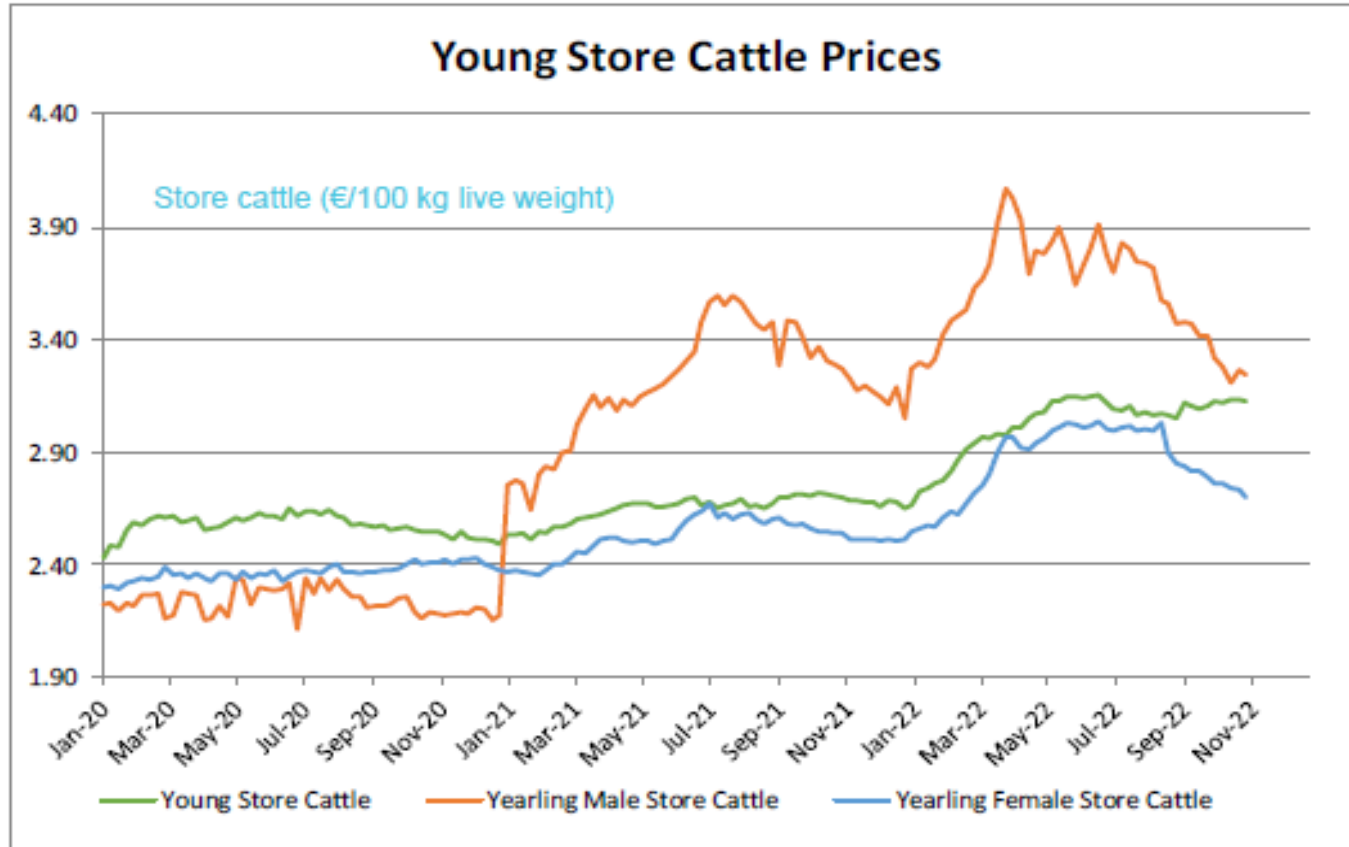
Average price in October 2022 : 508.59
% change y/y : + 21.7%

KARKAS FİYATLARI

AB TÜM KATEGORİLERE GLOBAL BAKIŞ



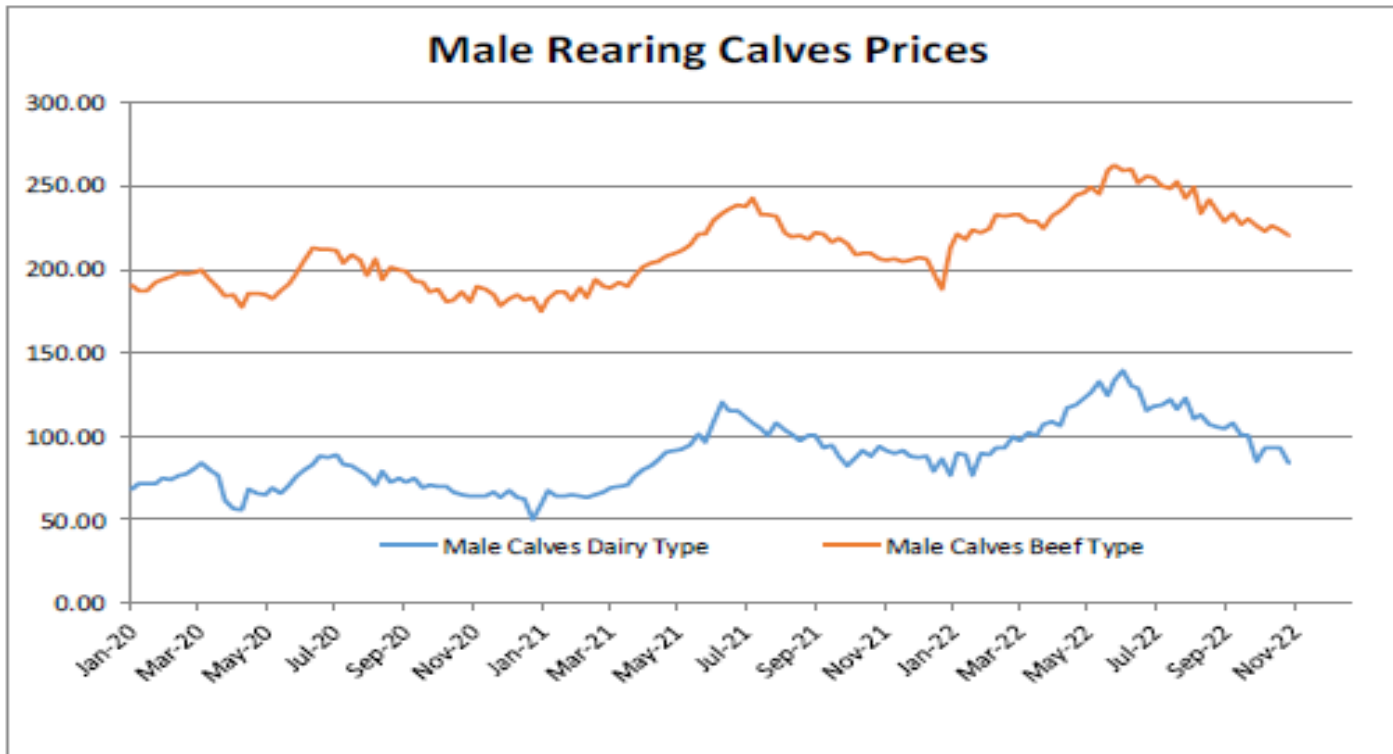
Besilik sığır (€ / 100 kg canlı ağırlık)



Young Store Cattle Price in	Week 44	3.13	Yearling Male Store Cattle Price	3.24
	Change y/y	+15.9%	Change y/y	-0.8%
Yearling Female Store Cattle Price		2.70		
	Change y/y	+6.3%		

8 gün ve 4 haftalık erkek buzağlar (€/baş)

Male calves aged between 8 days and 4 weeks (€/head)

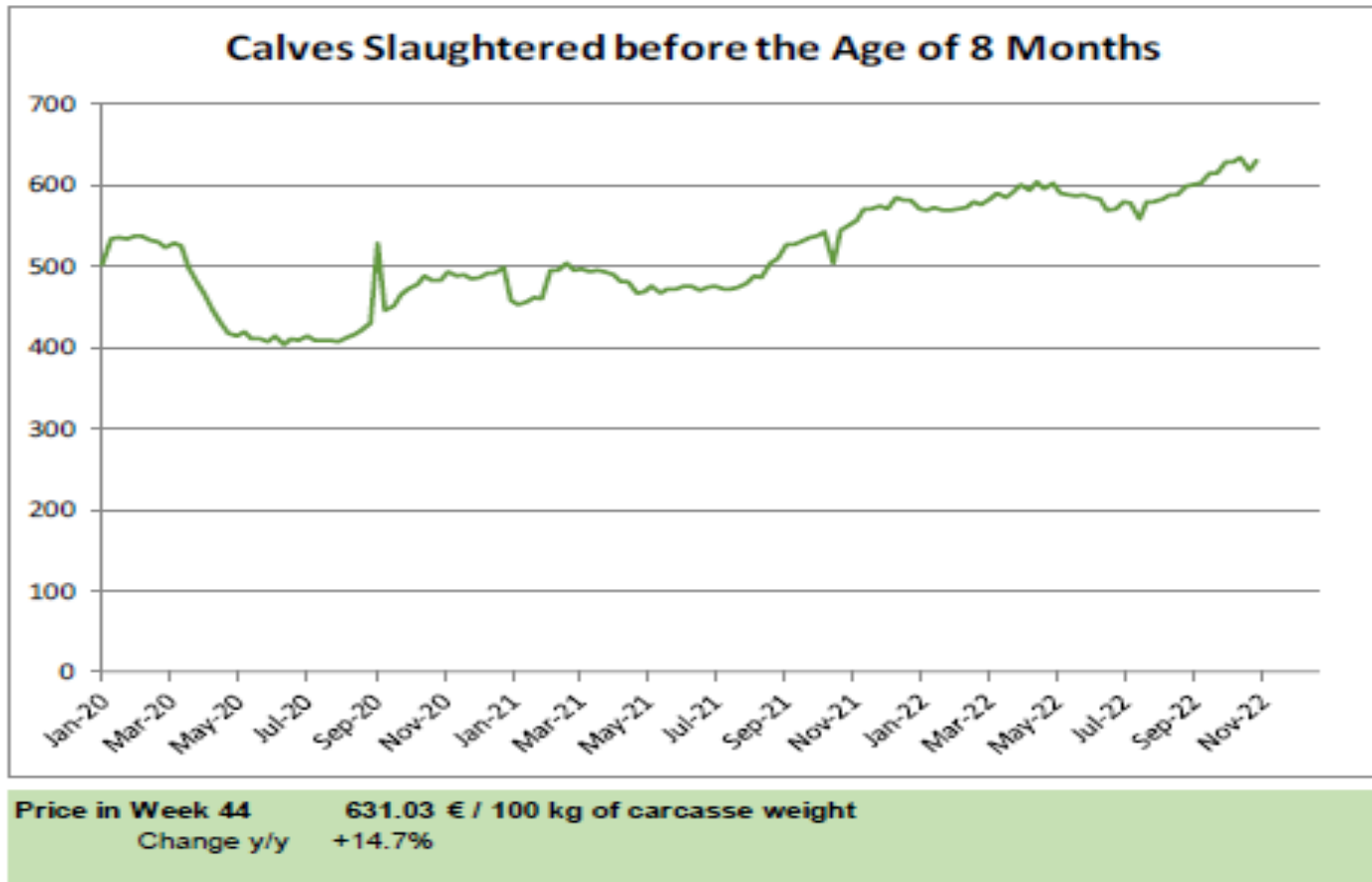


Male Rearing Calves Beef type
Price in Week 44 220.37
Change y/y +6.6%

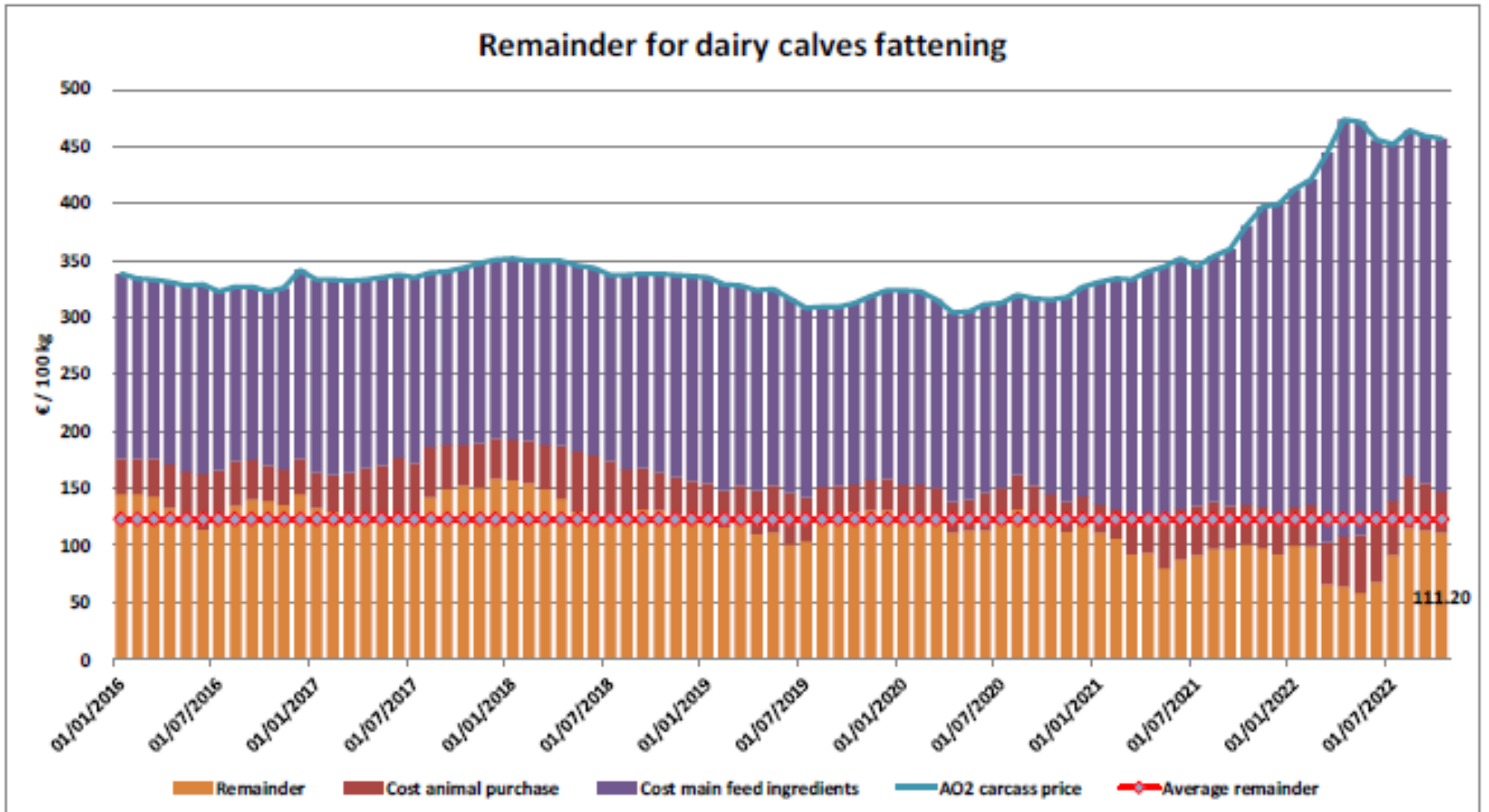
Male Rearing Calves Dairy type
Price in Week 44 84.02
Change y/y -10.9%

8 aylıktan küçük kesilen buzağular (€ / 100 kg canlı ağırlık)

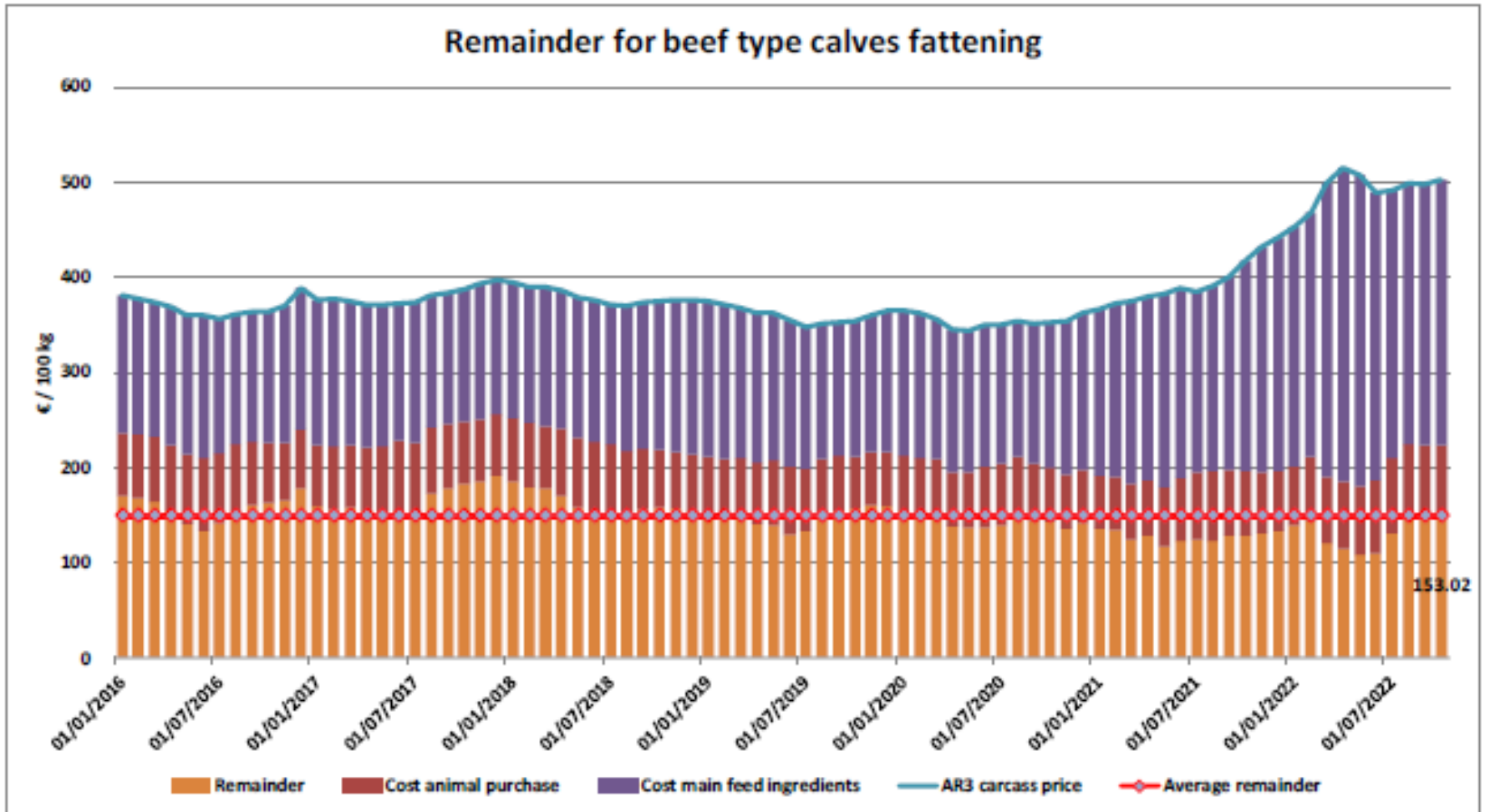
Calves slaughtered before the age of less than 8 months
(€/100 kg cw)



Süt Buzağları Besiciliği İçin Kalanlar



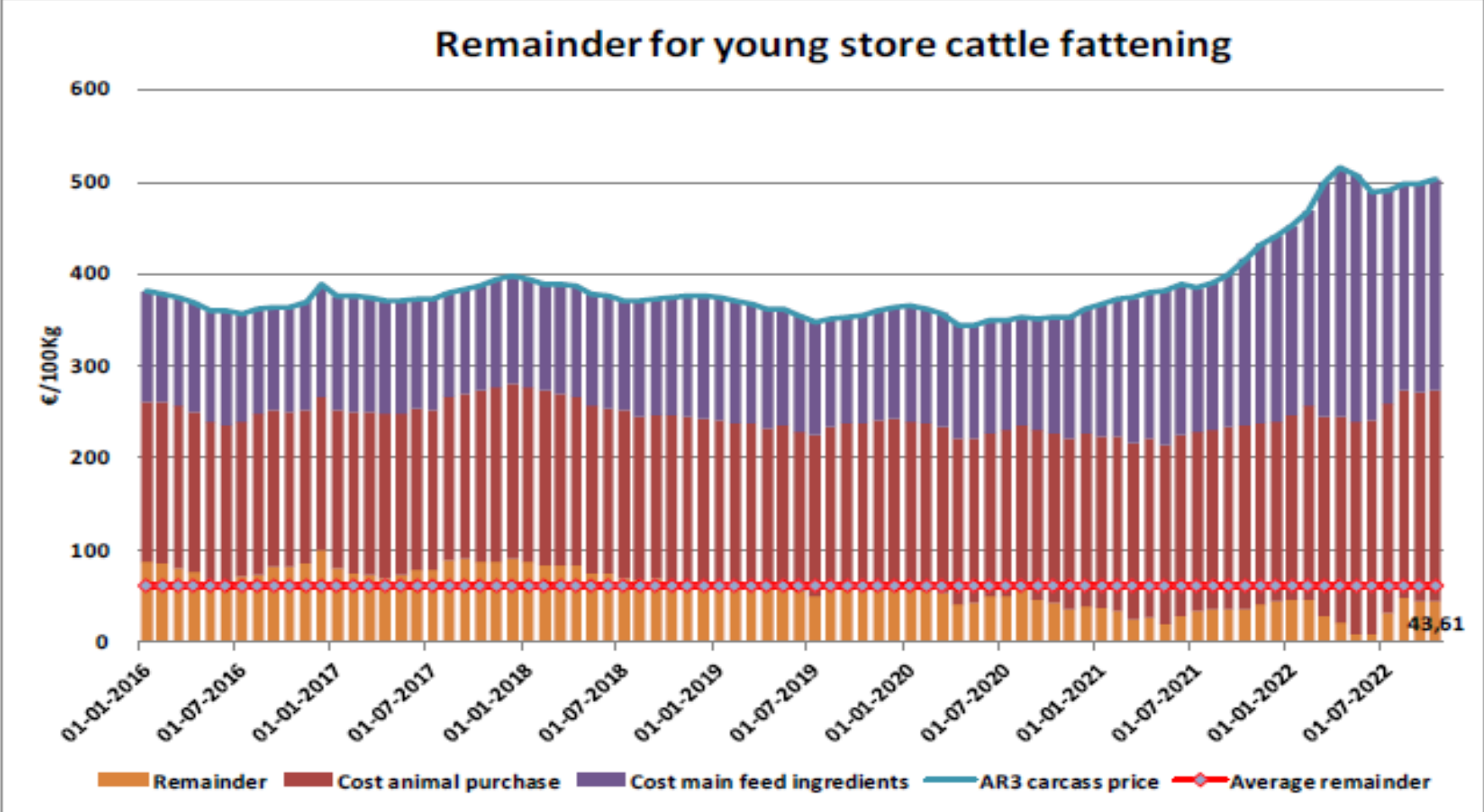
Sığır Tipi Buzağı Besiciliği İçin Kalanlar





Genç Besilik Sığır Besiciliği İçin Kalanlar

Remainder for young store cattle fattening



AB sığır eti ve canlı hayvan ihracatı (yağlar hariç): Pazar Rakamları (COMEXT – ton ca)

In Tons of Carcase Weight

Destinations	2020		2021		Jan to Aug 2022		Compared to Jan to Aug 2021
	Tons	% Extra EU	Tons	% Extra EU	Tons	% Extra EU	
United Kingdom	450.456	39,5%	344.491	33,4%	258.747	40,1%	+21,4%
Israel	56.139	4,9%	66.022	6,4%	43.077	6,7%	-5,9%
Bosnia-Herz.	34.896	3,1%	40.449	3,9%	25.007	3,9%	-6,2%
Ghana	47.344	4,2%	47.590	4,6%	23.969	3,7%	-27,9%
Philippines	33.650	3,0%	34.666	3,4%	20.924	3,2%	-14,3%
Ivory Coast	32.433	2,8%	29.236	2,8%	20.732	3,2%	-2,5%
Switzerland	26.223	2,3%	28.717	2,8%	17.621	2,7%	-13,2%
Lebanon	33.709	3,0%	19.527	1,9%	16.428	2,5%	+11,2%
Japan	11.885	1,0%	21.888	2,1%	14.466	2,2%	+6,3%
Canada	20.450	1,8%	20.676	2,0%	13.055	2,0%	+11,4%
Algeria	39.396	3,5%	24.111	2,3%	12.245	1,9%	-34,2%
Other Destinations	352.811	31,0%	353.478	34,3%	178.887	27,7%	-23,6%
Extra-EU	1.139.392		1.030.851		645.157		-4,8%
% Change				-9,5%			

In Thousand Euros

	2020		2021		Jan to Aug 2022		Compared to Jan to Aug 2021
	1 000 EUR	% Extra EU	1 000 EUR	% Extra EU	1 000 EUR	% Extra EU	
United Kingdom	1.508.377	40,2%	1.492.041	38,4%	1.156.697	41,9%	+29,3%
Israel	266.074	7,1%	328.295	8,4%	249.509	9,0%	+11,5%
Bosnia-Herz.	96.620	2,6%	126.247	3,2%	102.922	3,7%	+29,8%
Ghana	43.585	1,2%	47.956	1,2%	26.860	1,0%	-18,2%
Philippines	61.861	1,6%	73.028	1,9%	55.206	2,0%	+13,8%
Ivory Coast	21.626	0,6%	25.684	0,7%	17.611	0,6%	-4,1%
Switzerland	142.125	3,8%	171.269	4,4%	131.487	4,8%	+15,2%
Lebanon	131.329	3,5%	80.664	2,1%	84.920	3,1%	+40,0%
Japan	43.177	1,1%	98.109	2,5%	85.593	3,1%	+59,3%
Canada	65.044	1,7%	73.398	1,9%	53.880	2,0%	+34,4%
Algeria	193.457	5,2%	111.646	2,9%	75.963	2,8%	-10,6%
Other Destinations	1.182.539	31,5%	1.257.773	32,4%	720.398	26,1%	-10,3%
Extra-EU	3.755.813		3.886.111		2.761.045		+12,5%
% Change				+3,5%			

AB sığır eti ve canlı hayvan ihracatı (yağlar hariç): Pazar Rakamları (COMEXT – ton ca)

Destinations	2018		2019		2020		2021		Jan-Sep 22		Compared to
	tonnes	%	tonnes	%	tonnes	%	tonnes	%	tonnes	%	
Israel	47 036	6.8%	48 505	7.1%	56 139	8.1%	66 022	9.6%	50 151	11.5%	+ 0.9%
Bosnia-Herz.	37 675	5.4%	40 013	5.8%	34 896	5.1%	40 449	5.9%	28 670	6.6%	- 6.4%
Ghana	36 766	5.3%	39 196	5.7%	47 344	6.9%	47 560	6.9%	25 755	5.9%	- 30.3%
Philippines	27 857	4.0%	31 302	4.6%	33 650	4.9%	34 666	5.1%	24 083	5.5%	- 12.6%
Ivory Coast	36 064	5.2%	33 396	4.9%	32 433	4.7%	29 236	4.3%	23 212	5.3%	- 0.3%
Switzerland	20 123	2.9%	21 398	3.1%	26 223	3.8%	28 717	4.2%	19 388	4.5%	- 13.6%
Lebanon	42 362	6.1%	36 221	5.3%	33 709	4.9%	19 527	2.8%	17 466	4.0%	+ 12.1%
Japan	3 452	0.5%	7 982	1.2%	11 885	1.7%	21 888	3.2%	16 091	3.7%	+ 0.8%
Canada	2 225	0.3%	6 756	1.0%	20 450	3.0%	20 676	3.0%	15 138	3.5%	+ 8.4%
Algeria	35 410	5.1%	57 152	8.3%	39 396	5.7%	24 111	3.5%	14 782	3.4%	- 28.4%
Egypt	6 218	0.9%	3 105	0.5%	7 718	1.1%	10 540	1.5%	12 246	2.8%	+ 81.1%
Kosovo	6 164	0.9%	9 896	1.4%	10 391	1.5%	16 478	2.4%	12 134	2.8%	+ 0.5%
Norway	7 783	1.1%	7 622	1.1%	12 873	1.9%	18 233	2.7%	11 033	2.5%	- 29.7%
Ukraine	10 445	1.5%	13 627	2.0%	14 988	2.2%	15 076	2.2%	9 378	2.2%	- 14.9%
Chile	16 410	2.4%	12 461	1.8%	8 664	1.3%	9 915	1.4%	8 422	1.9%	+ 57.9%
Hong Kong	5 335	0.8%	46 639	6.8%	56 713	8.2%	44 799	6.5%	8 315	1.9%	- 78.1%
Other Destinations	350 098	50.6%	271 405	39.5%	241 466	35.0%	238 438	34.7%	138 523	31.9%	
Total (without UK)	691 423		686 677		688 936		686 360		434 798		
% change			- 1%		+ 0%		- 0%		- 16.5%		

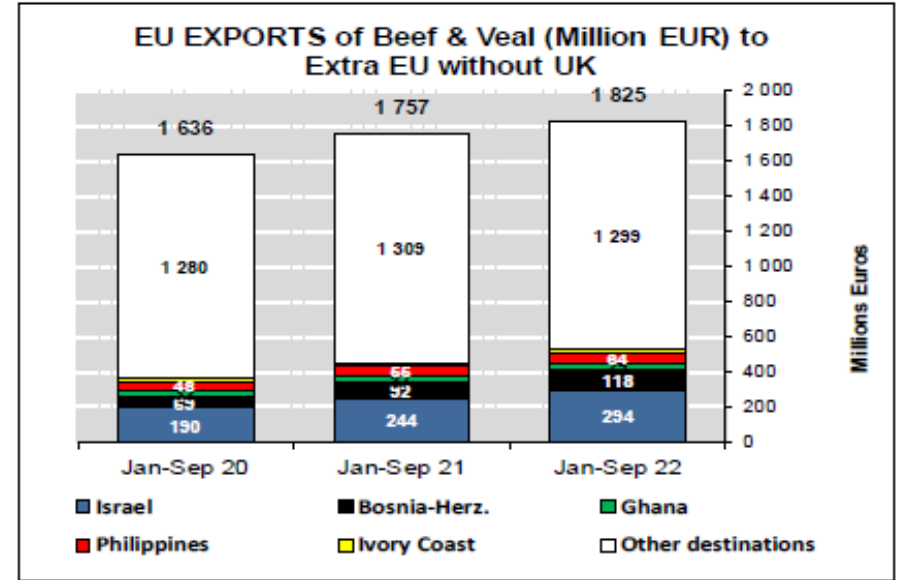
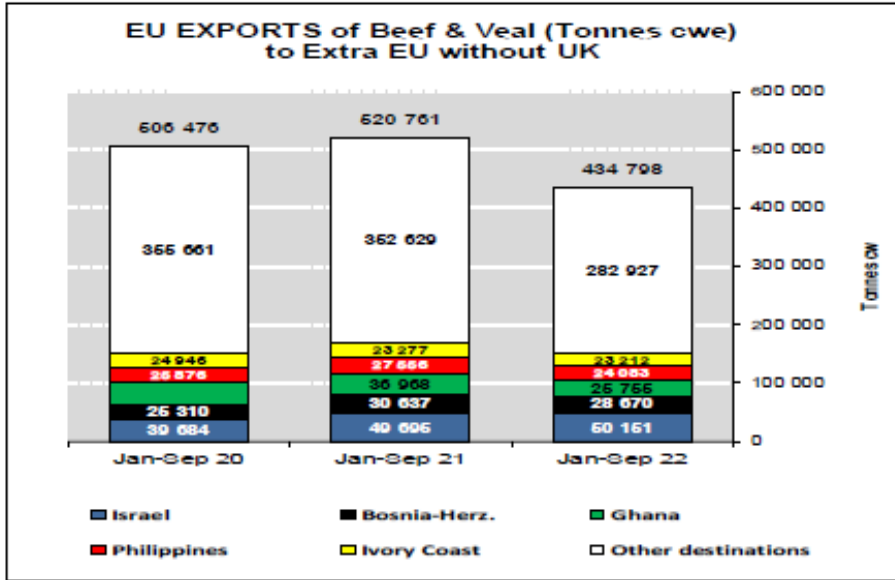
AB sığır eti ihracatı (canlı hayvanlar ve yağlar hariç): Pazar Rakamları (COMEXT – ton ca)

Destinations

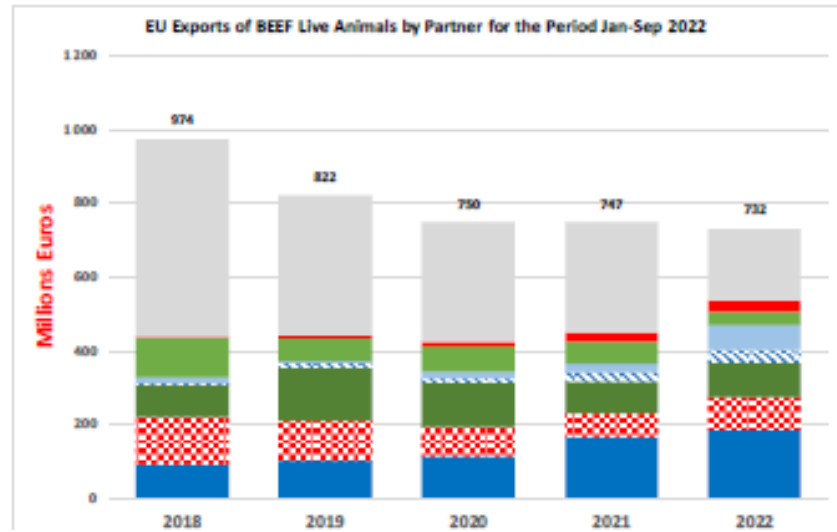
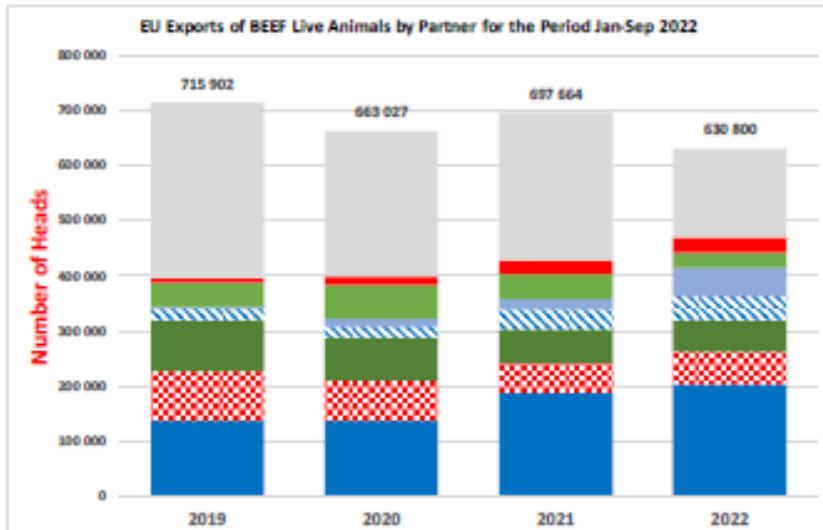
	2018		2019		2020		2021		Jan-Sep 22		Compared to
	tonnes	%	tonnes	%	tonnes	%	tonnes	%	tonnes	%	
Bosnia-Herz.	35 064	7.7%	37 700	8.2%	32 596	6.9%	37 526	7.8%	26 284	8.6%	- 7.9%
Ghana	36 766	8.1%	39 196	8.5%	47 344	10.0%	47 590	9.8%	25 755	8.4%	- 30.3%
Philippines	27 857	6.1%	31 302	6.8%	33 650	7.1%	34 666	7.2%	24 083	7.9%	- 12.6%
Ivory Coast	36 064	7.9%	33 396	7.2%	32 433	6.8%	29 236	6.0%	23 212	7.6%	- 0.3%
Switzerland	19 073	4.2%	20 320	4.4%	25 170	5.3%	27 394	5.7%	18 445	6.0%	- 13.7%
Israel	21 425	4.7%	21 902	4.7%	21 131	4.4%	20 548	4.2%	17 267	5.6%	+ 9.2%
Japan	3 452	0.8%	7 982	1.7%	11 885	2.5%	21 888	4.5%	16 091	5.3%	+ 0.8%
Canada	2 225	0.5%	6 756	1.5%	20 450	4.3%	20 676	4.3%	15 138	4.9%	+ 8.4%
Norway	7 780	1.7%	7 622	1.7%	12 673	2.7%	18 231	3.8%	11 033	3.6%	- 29.7%
Ukraine	9 866	2.2%	12 684	2.7%	13 992	2.9%	13 679	2.8%	8 960	2.9%	- 10.3%
Chile	16 410	3.6%	12 461	2.7%	8 664	1.8%	9 915	2.0%	8 422	2.8%	+ 57.9%
Hong Kong	55 439	12.1%	46 639	10.1%	56 713	11.9%	44 799	9.3%	8 315	2.7%	- 78.1%
North Macedonia	9 483	2.1%	10 744	2.3%	10 034	2.1%	12 777	2.6%	7 417	2.4%	- 25.5%
USA	5 441	1.2%	7 866	1.7%	12 308	2.6%	11 430	2.4%	7 325	2.4%	- 17.6%
Angola	11 470	2.5%	8 410	1.8%	9 324	2.0%	7 600	1.6%	5 260	1.7%	+ 2.8%
South Africa	7 214	1.6%	5 391	1.2%	7 743	1.6%	10 237	2.1%	5 127	1.7%	- 34.6%
Other Destinations	151 335	33.2%	151 379	32.8%	118 671	25.0%	115 714	23.9%	77 841	25.4%	
Total (without UK)	456 364		461 750		474 982		483 905		305 975		
% change			+ 1%		+ 3%		+ 2%		- 17.6%		



AB sığır eti ve canlı hayvan ihracatı (yağlar hariç):



AB canlı hayvan ihracatı:



AB Sığır Eti ve Canlı Hayvan İthalatları (yağlar hariç):

In Tons of Carcase Weight

Origins	2020		2021		Jan to Aug 2022		Compared to Jan to Aug 2021
	Tons	% Extra EU	Tons	% Extra EU	Tons	% Extra EU	
United Kingdom	120.744	35,1%	87.597	28,3%	90.378	35,2%	+68,5%
Brazil	84.139	24,4%	81.714	26,4%	57.920	22,5%	+10,2%
Argentina	56.421	16,4%	52.278	16,9%	41.605	16,2%	+31,7%
Uruguay	34.611	10,0%	42.669	13,8%	28.502	11,1%	-4,4%
USA	16.532	4,8%	14.826	4,8%	12.445	4,8%	+37,1%
Australia	11.058	3,2%	8.925	2,9%	6.724	2,6%	-1,4%
New Zealand	6.116	1,8%	4.382	1,4%	3.713	1,4%	+29,3%
Paraguay	4.234	1,2%	3.933	1,3%	3.587	1,4%	+48,8%
Switzerland	4.187	1,2%	4.714	1,5%	2.805	1,1%	-3,4%
Namibia	1.445	0,4%	1.996	0,6%	2.613	1,0%	+++
Japan	789	0,2%	1.478	0,5%	2.607	1,0%	+++
Other Destinations	4.130	1,2%	4.603	1,5%	4.093	1,6%	+41,3%
Extra-EU	344.404		309.115		256.994		+31,1%
% Change				-10,2%			

In Thousand Euros

	2020		2021		Jan to Aug 2022		Compared to Jan to Aug 2021
	1 000 EUR	% Extra EU	1 000 EUR	% Extra EU	1 000 EUR	% Extra EU	
United Kingdom	483.287	26,5%	359.655	20,2%	376.579	22,2%	+74,2%
Brazil	377.626	20,7%	387.078	21,7%	347.169	20,5%	+46,5%
Argentina	358.357	19,7%	376.481	21,1%	368.889	21,8%	+81,1%
Uruguay	210.062	11,5%	246.910	13,8%	234.505	13,8%	+47,1%
USA	154.464	8,5%	155.927	8,7%	144.338	8,5%	+60,4%
Australia	91.489	5,0%	90.481	5,1%	75.662	4,5%	+14,4%
New Zealand	41.142	2,3%	31.669	1,8%	32.124	1,9%	+66,2%
Paraguay	20.834	1,1%	20.419	1,1%	23.563	1,4%	+++
Switzerland	44.984	2,5%	53.477	3,0%	32.226	1,9%	-0,4%
Namibia	5.725	0,3%	6.902	0,4%	11.592	0,7%	+++
Japan	10.314	0,6%	25.588	1,4%	21.924	1,3%	+66,5%
Other Destinations	24.052	1,3%	30.277	1,7%	25.730	1,5%	+45,9%
Extra-EU	1.822.336		1.784.864		1.694.302		+58,6%
% Change				-2,1%			

AB Sığır Eti İthalatları (yağlar hariç):

Origins

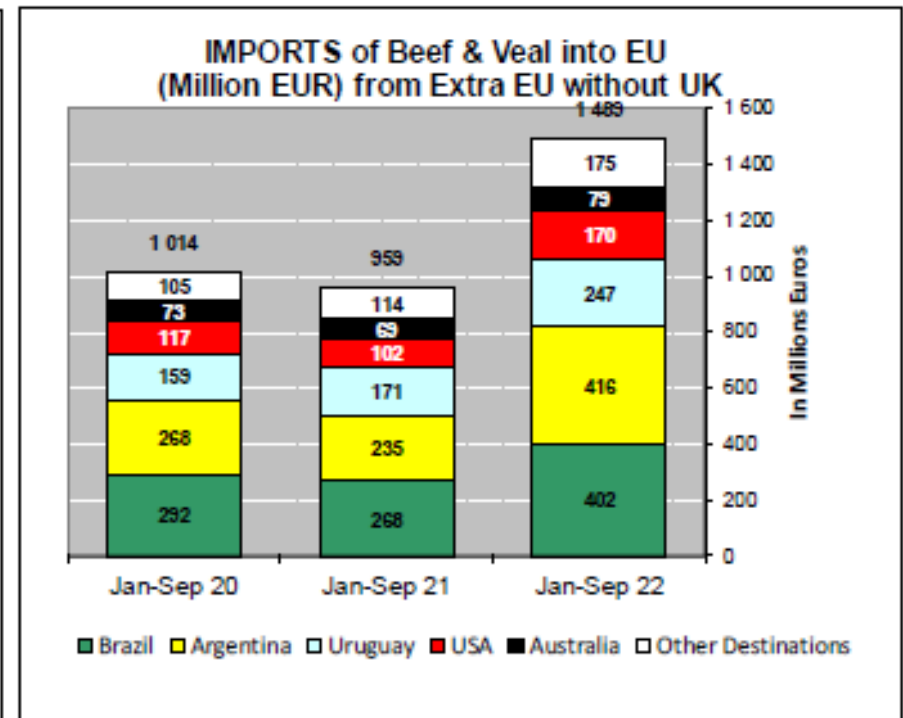
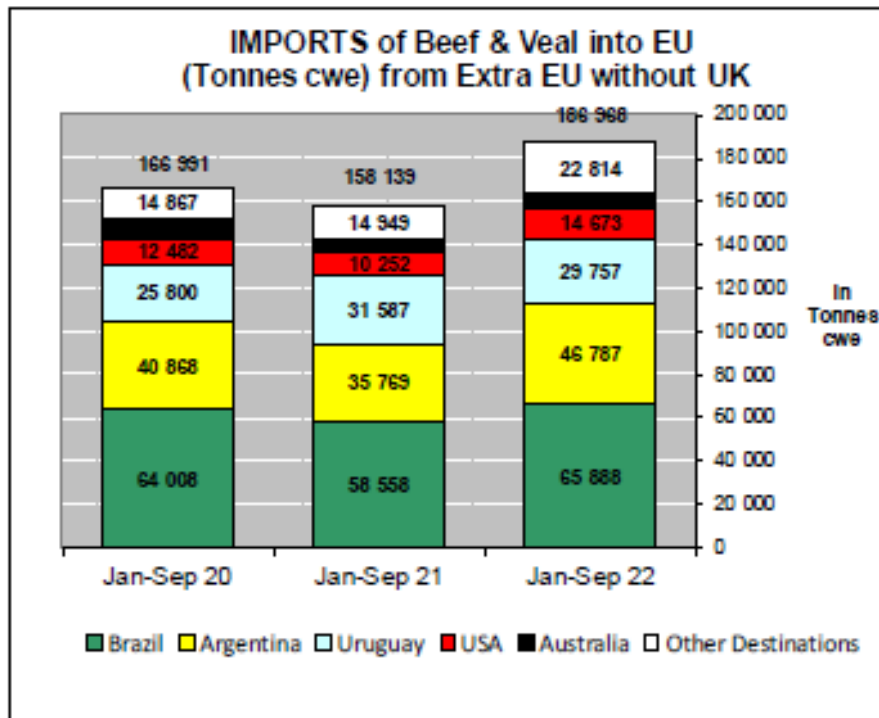
	2018		2019		2020		2021		Jan-Sep 22		Compared to
	tonnes	%	tonnes	%	tonnes	%	tonnes	%	tonnes	%	
Brazil	103 979	37.3%	99 569	36.4%	84 139	37.6%	81 714	36.9%	65 888	35.2%	+ 12.5%
Argentina	61 400	22.0%	65 324	23.9%	56 421	25.2%	52 278	23.6%	46 787	25.0%	+ 30.8%
Uruguay	47 922	17.2%	40 483	14.8%	34 611	15.5%	42 669	19.3%	29 757	15.9%	- 5.8%
USA	19 268	6.9%	16 852	6.2%	16 532	7.4%	14 826	6.7%	14 673	7.8%	+ 43.1%
Australia	17 354	6.2%	16 432	6.0%	11 058	4.9%	8 925	4.0%	7 048	3.8%	+ 0.4%
New Zealand	7 109	2.6%	6 712	2.5%	6 116	2.7%	4 382	2.0%	4 269	2.3%	+ 29.3%
Paraguay	5 520	2.0%	5 203	1.9%	4 234	1.9%	3 933	1.8%	4 155	2.2%	+ 43.3%
Namibia	3 442	1.2%	7 706	2.8%	1 445	0.6%	1 996	0.9%	3 449	1.8%	+++
Switzerland	5 413	1.9%	4 393	1.6%	4 187	1.9%	4 714	2.1%	3 155	1.7%	- 4.3%
Japan	791	0.3%	997	0.4%	789	0.4%	1 478	0.7%	2 660	1.4%	+++
Canada	1 343	0.5%	2 518	0.9%	1 550	0.7%	1 816	0.8%	1 739	0.9%	+ 40.3%
Botswana	3 119	1.1%	4 950	1.8%	788	0.4%	331	0.1%	865	0.5%	+++
Serbia	1 134	0.4%	1 062	0.4%	931	0.4%	963	0.4%	860	0.5%	+ 31.7%
Norway	153	0.1%	125	0.0%	335	0.1%	546	0.2%	515	0.3%	+ 38.5%
Chile	356	0.1%	392	0.1%	168	0.1%	238	0.1%	324	0.2%	+++
Algeria	0	0.0%	0	0.0%	0	0.0%	0	0.0%	259	0.1%	+++
Other Destinations	445	0.2%	483	0.2%	357	0.2%	727	0.3%	564	0.3%	
Total (without UK)	278 748		273 202		223 660		221 535		186 968		
% change			- 2%		- 18%		- 1%		+ 18.2%		

AB Sığır Eti Yağları İthalatı:

In Tons of Carcase Weight

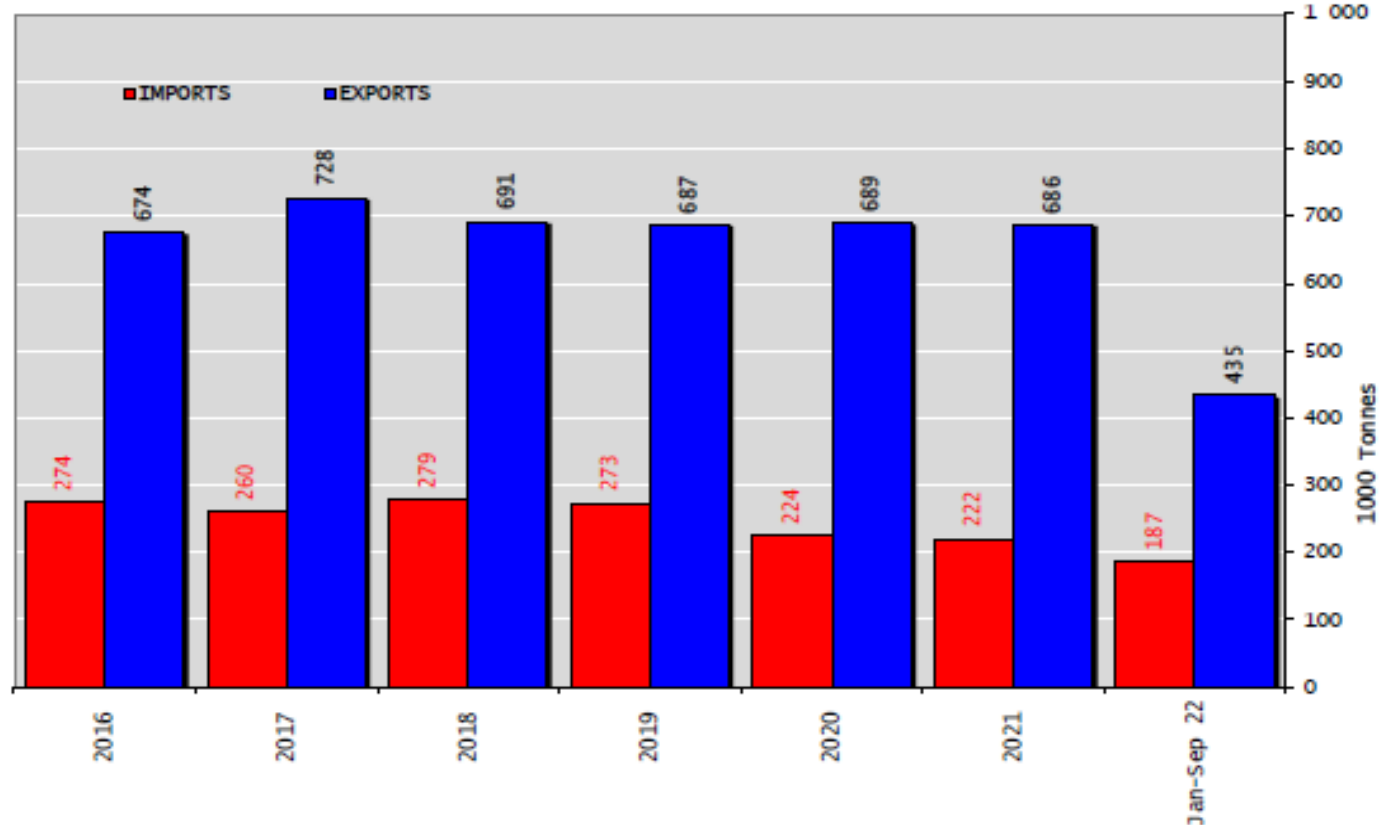
Origins	2020		2021		Jan to Aug 2022		Compared to Jan to Aug 2021
	Tons	% Extra EU	Tons	% Extra EU	Tons	% Extra EU	
Argentina	477	4.3%	23 494	44.1%	14 464	49.1%	-10.6%
Uruguay	1	0.0%	17 065	32.0%	7 512	25.5%	-42.4%
United Kingdom	10 223	91.2%	11 541	21.7%	6 595	22.4%	-17.9%
Switzerland	138	1.2%	519	1.0%	486	1.7%	+72.0%
Israel	111	1.0%	469	0.9%	308	1.0%	+++
Ukraine	134	1.2%	-	0.0%	48	0.2%	
Iceland	14	0.1%	27	0.1%	15	0.1%	+72.5%
New Zealand	30	0.3%	14	0.0%	14	0.0%	
Japan	0	0.0%	1	0.0%	1	0.0%	+++
Singapore	0	0.0%	-	0.0%	0	0.0%	
Brazil	-	0.0%	0	0.0%	0	0.0%	-14.0%
Other Destinations	79	0.7%	170	0.3%	0	0.0%	-100.0%
Extra-EU	11 206		53 300		29 444		-22.1%
% Change				+375.6%			

AB Sığır Eti ve Canlı Hayvan İthalatları (yağlar hariç)



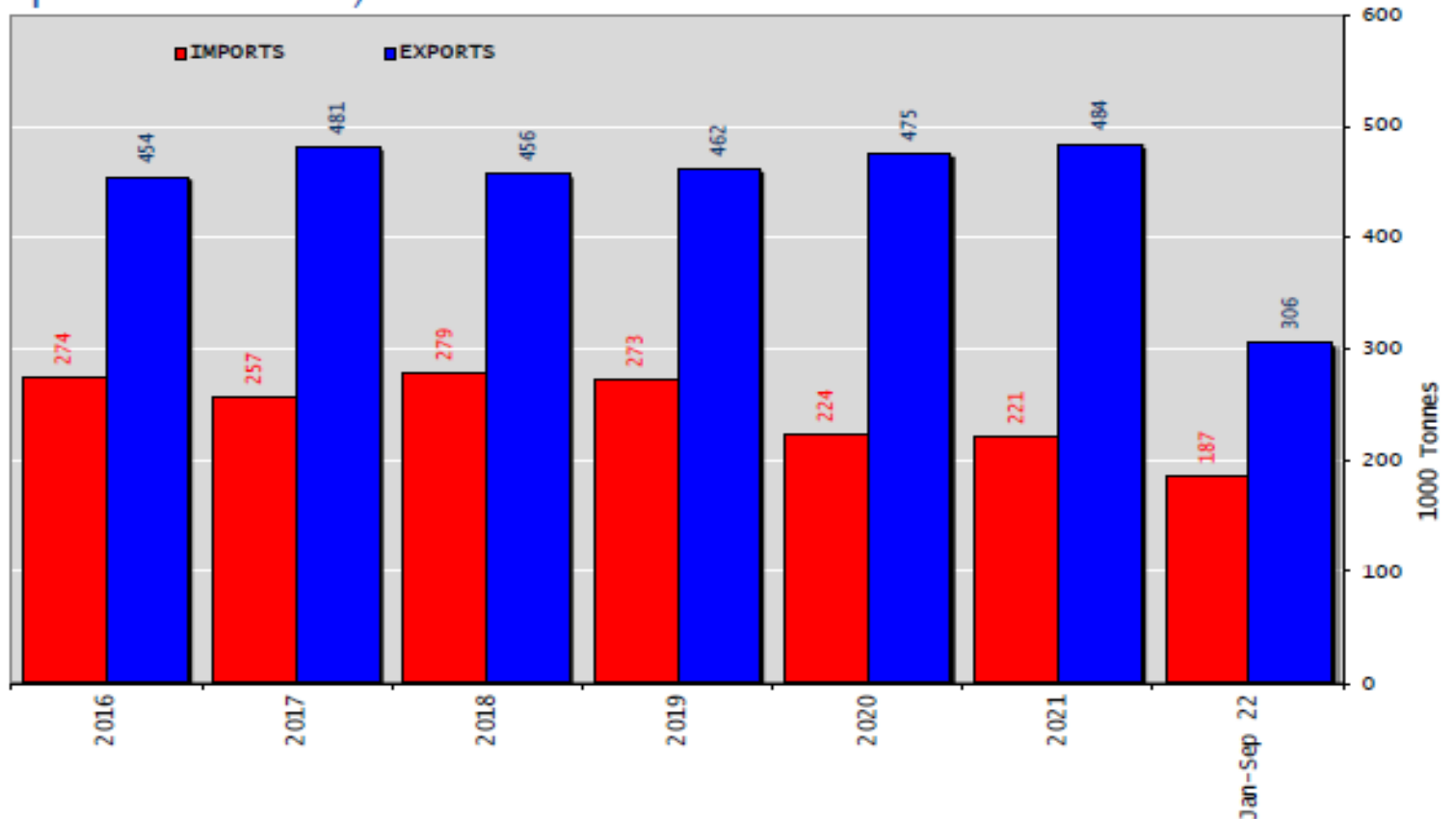
Sığır eti ve canlı hayvan ticaret dengesi (Birleşik Krallık hariç)

Trade Balance of Beef Products and Live Animals (without UK)



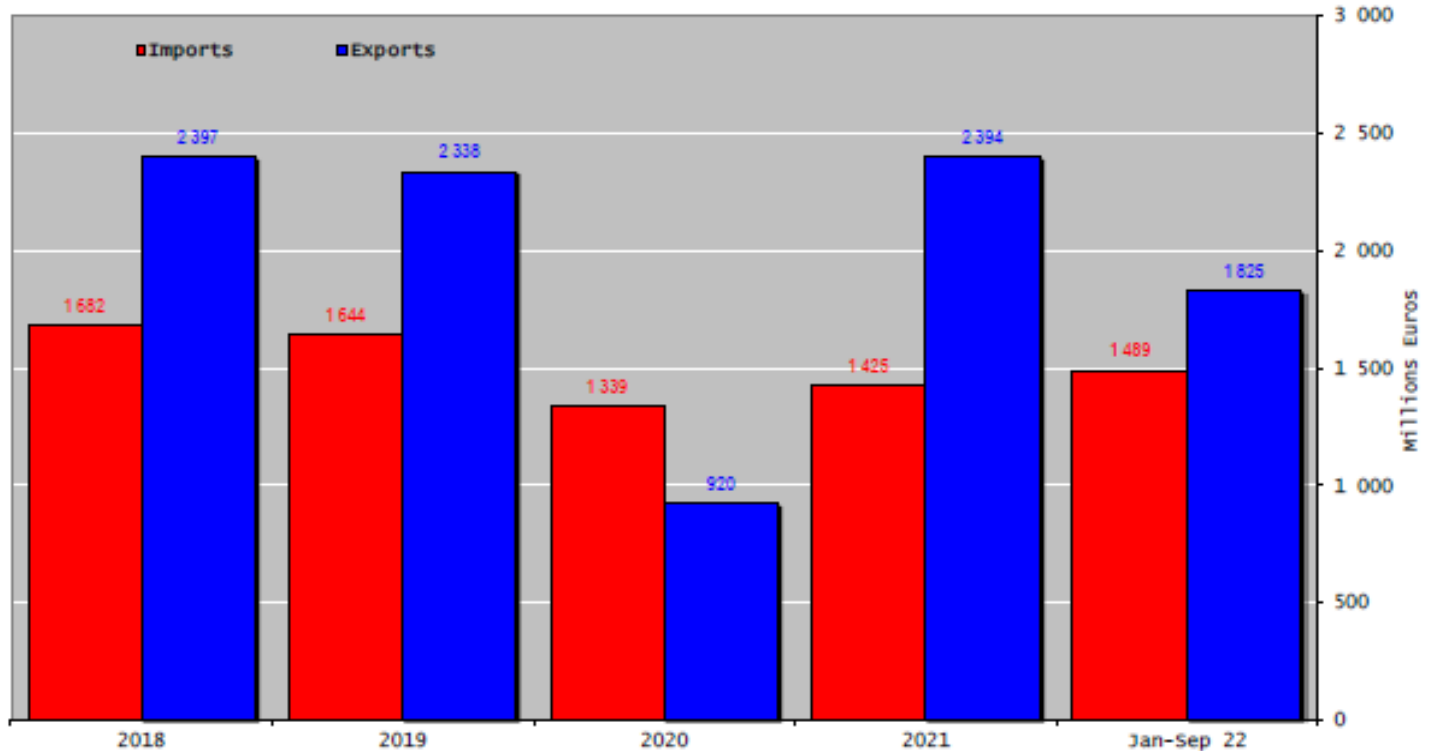
Sığır eti ürünleri ticaret dengesi (canlı hayvan ve yağlar hariç) (Birleşik Krallık hariç)

Trade Balance of Beef Products (not including Fats)
(Except Live Animals) without UK

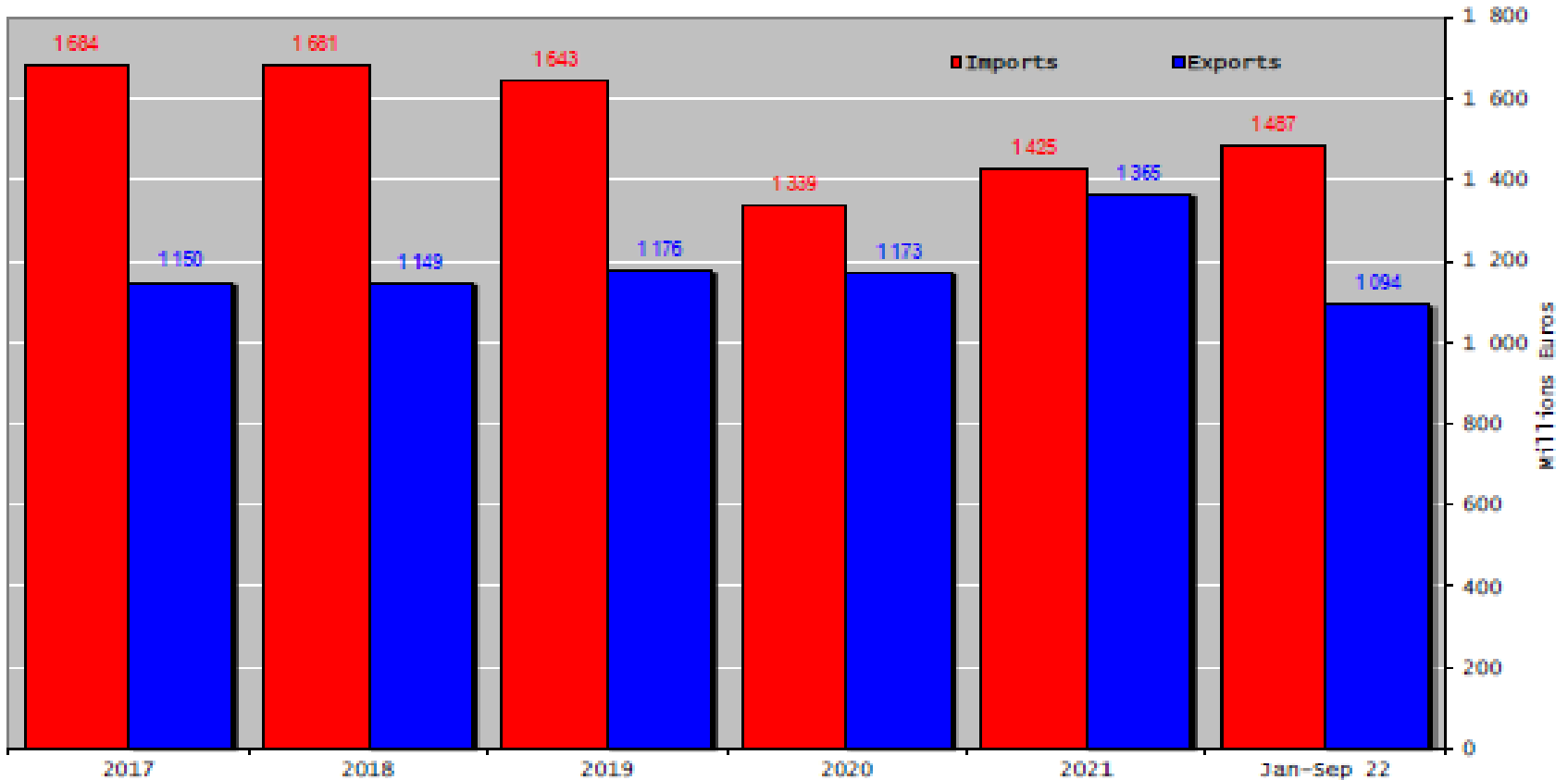


Sığır eti ürünleri ve canlı hayvan ticaret dengesi (Birleşik Krallık hariç)

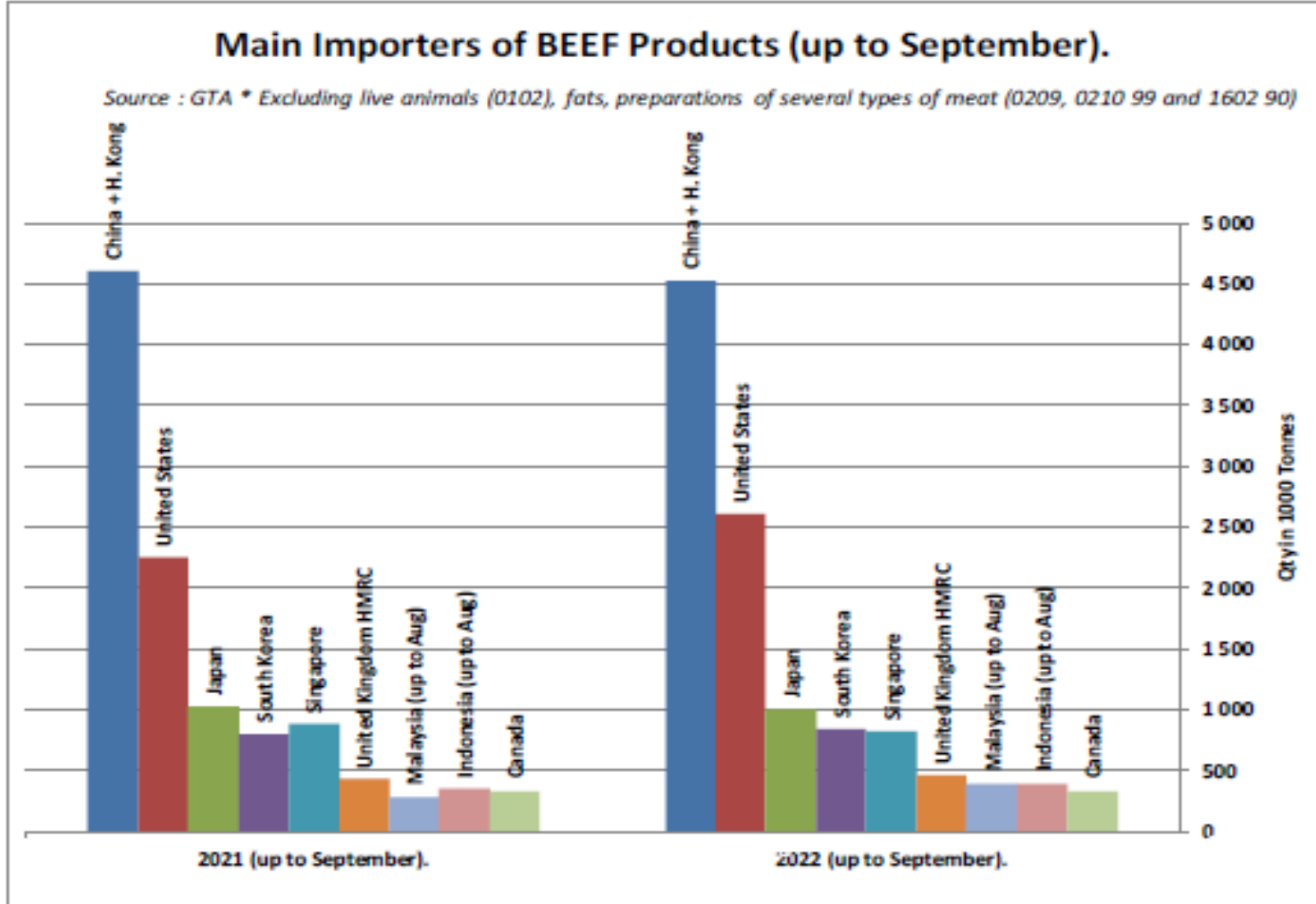
Trade Balance of Beef Products and Live Animals (without UK)



Sığır eti ürünleri ticaret dengesi – yağlar ve canlı hayvanlar hariç (Birleşik Krallık hariç)



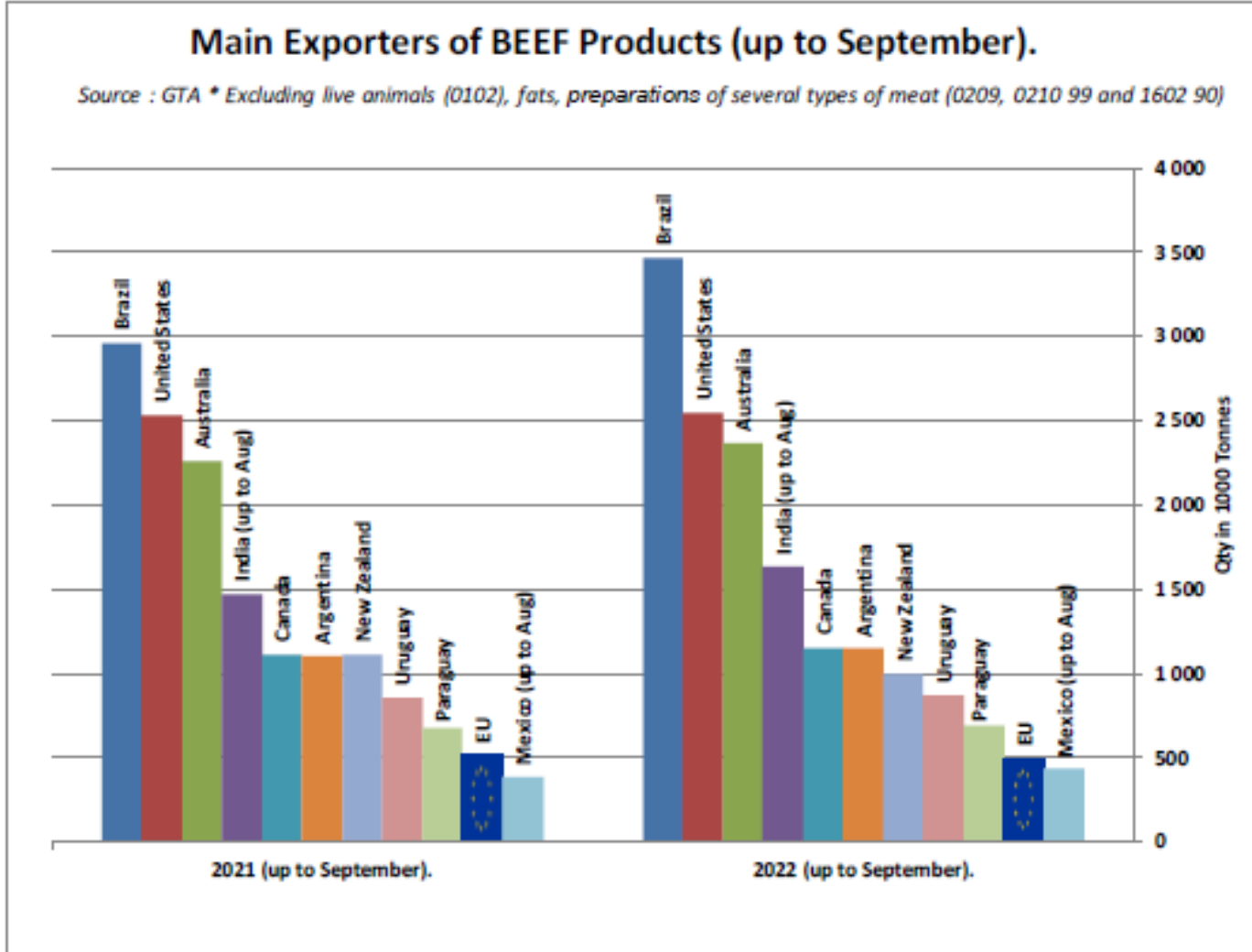
SIĞIR ETİ ÜRÜNLERİNİN NET İTHALATÇILARI (EYLÜL AYINA KADAR)





European
Commission

SIĞIR ETİ ÜRÜNLERİNİN NET İHRACATÇILARI (EYLÜL AYINA KADAR)

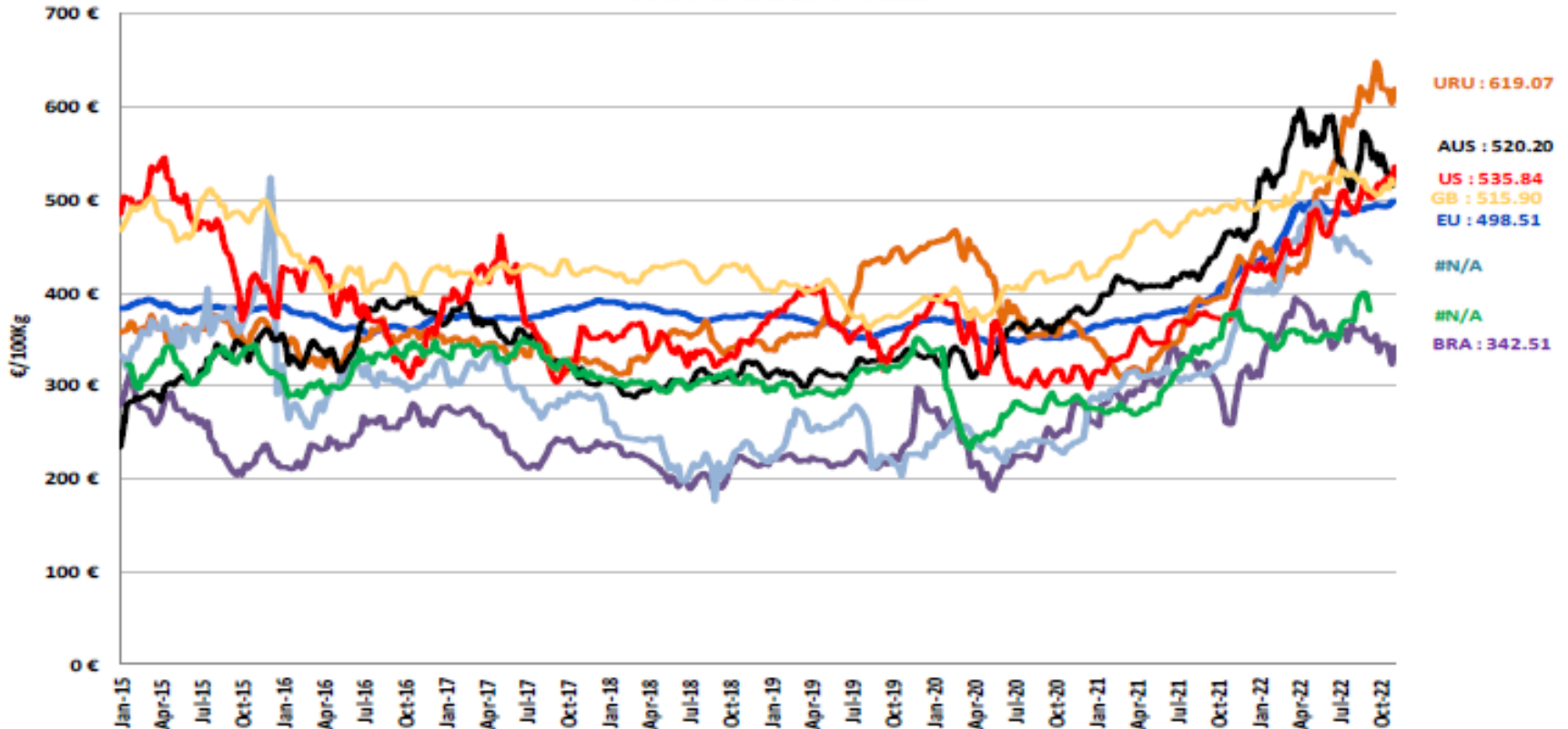


DÜNYA SIĞIR ETİ PAZARI



Dünya Sığır Fiyatları AB, ABD, AVUSTURYA, YENİ ZELANDA

World Beef Prices



- ECB <http://sdw.ecb.europa.eu/browse.do?node=2018794>
- US <https://www.marketnews.usda.gov/mnp/lc-home>
- AUS <http://www.mla.com.au/prices-markets/cattle/processoryearlingsteer/>
- UY <http://www.inac.gub.uy/innovaportal/v/11034/10/innova.front/indicadores-y-precios>
- ARG http://www.abc-consorcio.com.ar/Estadisticas/detalle/117/precios_comparativos_del_novillo.html
- BR <http://www.pecuaria.com.br/cotacoes.php>
- NZ http://www.abc-consorcio.com.ar/Estadisticas/detalle/117/precios_comparativos_del_novillo.html
- GB <https://ahdb.org.uk/beef/gb-deadweight-cattle-prices-by-region>

1ber 2022





Daha fazla bilgi için:

https://ec.europa.eu/agriculture/market-observatory/meat_en

Ve Agri-FOOD Veri Portalı:

<http://agridata.ec.europa.eu>