



# AB SIĞIR VE DANA ETİ PAZAR DURUMU

20 Ekim 2022

# HAYVAN VARLIĞI

## HAZİRAN ARAŞTIRMASI



European  
Commission

# AB DEĞİŞİMİ

## TOPLAM BÜYÜKBAŞ

May/Jun 1000 Hd	TOT LIVESTOCK				%Var 2022 2021	BOVINE < 1 Year				%Var 2022 2021	BOVINE 1-2 Year				%Var 2022 2021	BOVINE > 2 Year				%Var 2022 2021
	2019	2020	2021	2022		2019	2020	2021	2022		2019	2020	2021	2022		2019	2020	2021	2022	
BE	2 406	2 388	2 353	2 241	-4.8%	706	716	712	656	-7.8%	475	471	473	463	-2.0%	1 226	1 201	1 169	1 121	-4.1%
BG																				
CZ																				
DK	1 512	1 517	1 503	1 484	-1.3%	510	517	517	510	-1.4%	292	291	287	290	+1.0%	710	709	699	684	-2.1%
DE	11 763	11 423	11 176	10 986	-1.7%	3 502	3 410	3 398	3 296	-3.0%	2 788	2 683	2 591	2 620	+1.1%	5 473	5 330	5 188	5 071	-2.3%
EE																				
IE	7 209	7 314	7 359	7 396	+0.5%	2 008	2 117	2 146	2 134	-0.5%	1 861	1 807	1 910	1 949	+2.0%	3 340	3 390	3 303	3 313	+0.3%
EL																				
ES	6 722	6 715	6 923	6 740	-2.6%	2 507	2 488	2 634	2 552	-3.1%	978	930	973	907	-6.8%	3 237	3 297	3 316	3 281	-1.1%
FR	18 470	18 200	17 863	17 416	-2.5%	5 227	5 144	5 134	4 949	-3.6%	3 229	3 249	3 158	3 144	-0.4%	10 014	9 808	9 571	9 323	-2.6%
HR																				
IT	6 016	6 116	6 174	6 087	-1.4%	1 746	1 746	1 762	1 725	-2.1%	1 409	1 458	1 476	1 475	-0.1%	2 861	2 912	2 936	2 887	-1.7%
CY																				
LV																				
LT																				
LU																				
HU																				
MT																				
NL	3 750	3 766	3 732	3 766	+0.9%	1 536	1 558	1 523	1 546	+1.5%	460	446	479	493	+2.9%	1 754	1 762	1 729	1 726	-0.2%
AT	1 873	1 844	1 846	1 842	-0.2%	596	588	596	592	-0.6%	425	416	413	422	+2.2%	853	841	838	828	-1.1%
PL	6 358	6 344	6 401	6 444	+0.7%	1 771	1 729	1 789	1 916	+7.1%	1 768	1 796	1 856	1 674	-9.8%	2 820	2 819	2 756	2 855	+3.6%
PT	1 712	1 751	1 723	1 680	-2.5%	524	557	550	554	+0.8%	267	264	252	229	-9.2%	921	929	922	897	-2.7%
RO	1 963	1 915	1 864	1 852	-0.6%	428	418	386	379	-1.9%	230	217	207	220	+6.2%	1 305	1 280	1 271	1 254	-1.4%
SI																				
SK																				
FI																				
SE	1 466	1 453	1 453	1 448	-0.3%	451	462	465	458	-1.6%	380	362	369	374	+1.3%	636	629	619	617	-0.2%
EU	71 220	70 747	70 371	69 383	-1.4%	21 512	21 451	21 612	21 268	-1.6%	14 559	14 389	14 444	14 260	-1.3%	35 149	34 907	34 315	33 856	-1.3%
UK	9 739	9 615				2 857	2 878				2 448	2 412				4 434	4 324			

Source: E-Stat Newscross

EU %Var is calculated considering only countries available in 2021 AND 2022

# HAYVAN VARLIĞI

## HAZİRAN ARAŞTIRMASI



# AB DEĞİŞİMİ

## İNEKLER

May/Jun 1000 Hd	TOTAL COWS				%Var 2022 2021	DAIRY COWS				%Var 2022 2021	OTHER COWS				%Var 2022 2021
	2019	2020	2021	2022		2019	2020	2021	2022		2019	2020	2021	2022	
BE	960	954	937	902	-3.7%	536	544	539	527	-2.2%	425	409	399	375	-5.8%
BG															
CZ															
DK	654	653	647	634	-2.0%	567	567	565	557	-1.4%	87	86	82	77	-6.1%
DE	4 720	4 609	4 517	4 430	-1.9%	4 067	3 969	3 892	3 817	-1.9%	653	640	626	612	-2.1%
EE															
IE	2 505	2 551	2 545	2 541	-0.2%	1 505	1 568	1 605	1 627	+1.4%	1 000	983	940	913	-2.9%
EL															
ES	2 854	2 927	2 987	2 948	-1.3%	815	810	828	892	+7.7%	2 039	2 117	2 159	2 056	-4.8%
FR	7 546	7 442	7 315	7 159	-2.1%	3 471	3 403	3 331	3 266	-1.9%	4 075	4 039	3 984	3 893	-2.3%
HR															
IT	2 110	2 130	2 161	2 130	-1.4%	1 840	1 844	1 852	1 821	-1.7%	270	286	309	309	+0.2%
CY															
LV															
LT															
LU															
HU															
MT															
NL	1 641	1 651	1 627	1 623	-0.2%	1 578	1 593	1 571	1 571	-0.0%	63	58	56	53	-5.6%
AT	726	716	715	710	-0.7%	525	523	531	549	+3.4%	201	193	184	161	-12.5%
PL	2 461	2 468	2 388	2 208	-7.6%	2 221	2 218	2 113	1 852	-12.4%	240	250	276	356	+28.9%
PT	742	757	757	742	-2.0%	238	239	236	227	-3.8%	504	517	521	515	-1.2%
RO	1 179	1 160	1 148	1 135	-1.2%	1 162	1 145	1 133	1 119	-1.3%	17	15	15	16	+7.3%
SI															
SK															
FI															
SE	516	510	512	510	-0.4%	306	303	302	297	-1.8%	210	207	210	213	+1.6%
EU	28 612	28 528	28 256	27 671	-2.1%	18 831	18 727	18 497	18 121	-2.0%	9 782	9 801	9 760	9 549	-2.2%
UK	3 398	3 359				1 871	1 850				1 527	1 509			

Source : EStat Newcronos

EU %Var is calculated considering only countries available in 2021 AND 2022



European  
Commission

**BAŞ**

HEADS	Jan-Jul 22/21
	EU

**BOĞA**

Bull	-3.9%
------	-------

**ÖKÜZ**

Bullock	+3.9%
---------	-------

**İNEK**

Cow	-0.4%
-----	-------

**DÜVE**

Heifer	+1.7%
--------	-------

**BUZAĞI**

Calve	-0.2%
-------	-------

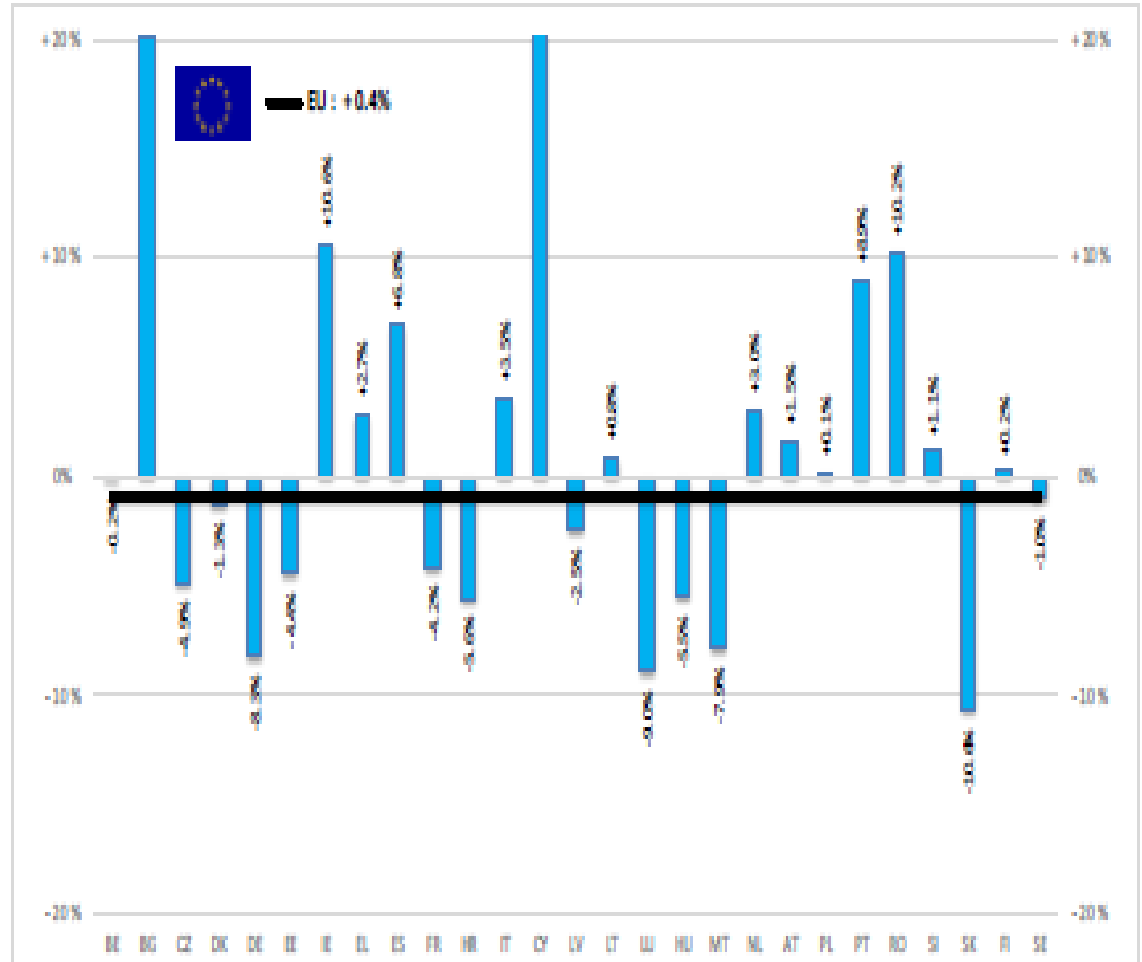
**GENÇ  
SİĞİR**

Young cattle	-1.8%
--------------	-------

**Büyükbaş  
Hayvan  
Eti**

Meat of bovine animals	-0.9%
------------------------------	-------

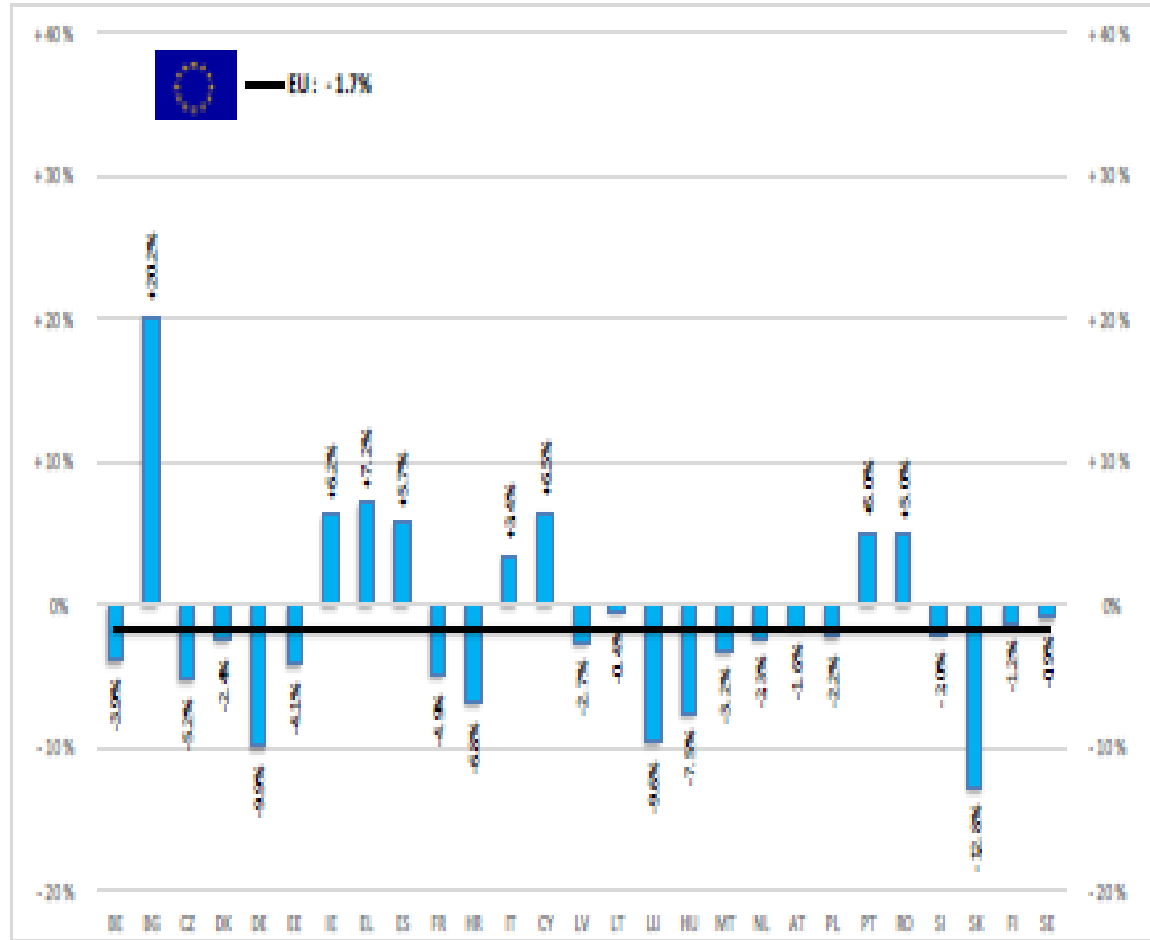
Estimates for last month of period : EL



Source : EStat - Newcron

TON	TONNES	Jan-Jul 22/21
	EU	
BOĞA	Bull	-3.5%
ÖKÜZ	Bullock	+2.6%
İNEK	Cow	-1.7%
DÜVE	Heifer	+0.7%
BUZAĞI	Calve	-1.4%
GENÇ SİĞİR	Young cattle	-2.4%
Büyükbaş Hayvan Eti	Meat of bovine animals	-1.7%

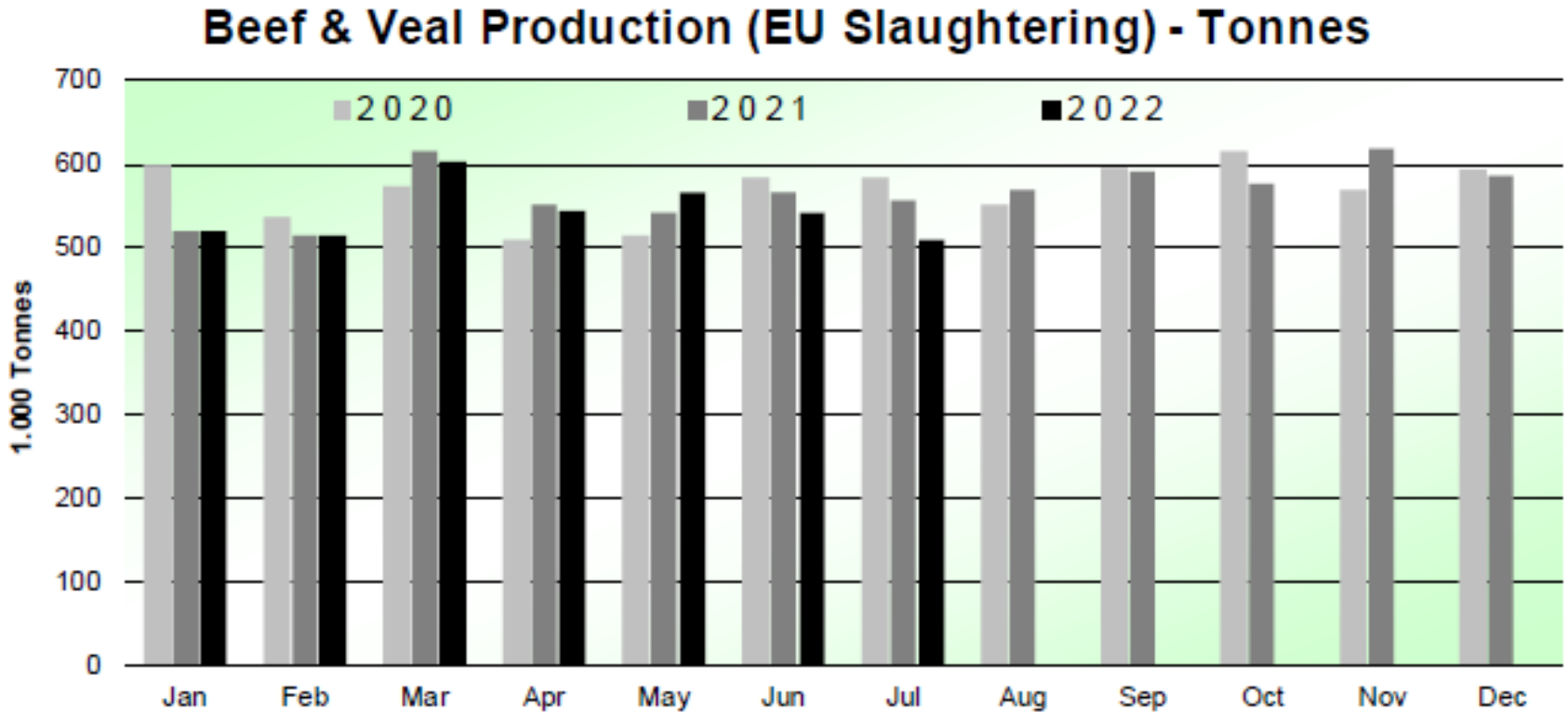
Estimates for last month of period : B.



Source : EStat - Newcronos



## SIĞIR VE DANA ETİ ÜRETİMİ (AB Kesimler – Ton)



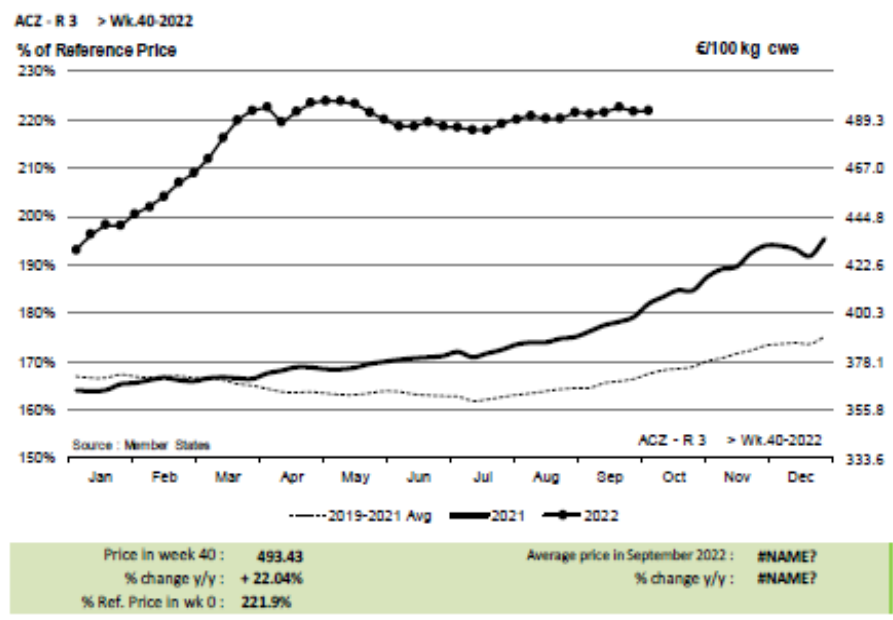
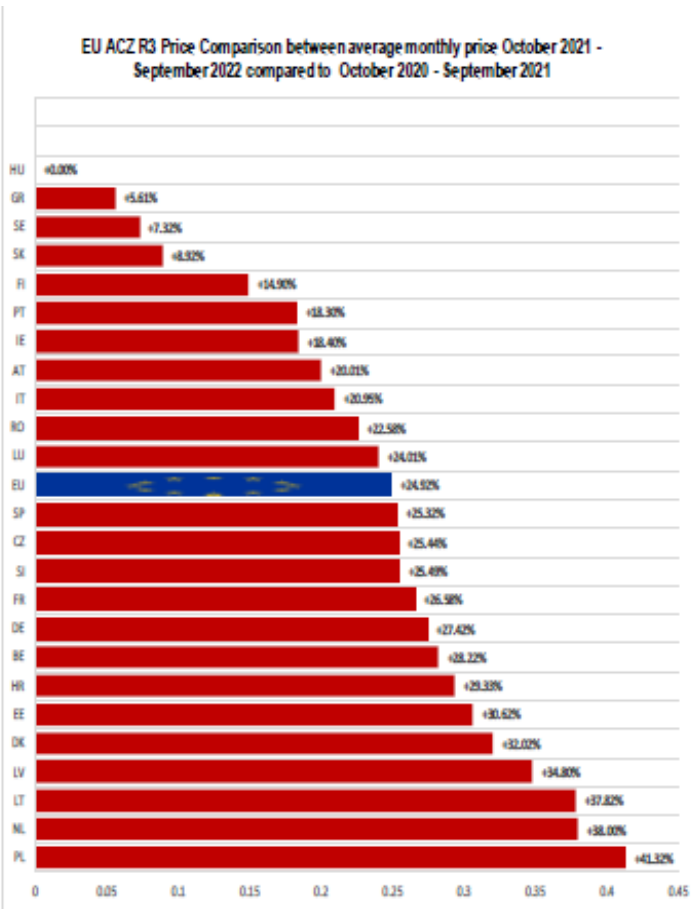
Source: EStat-Newcronos

EU Prices week		40	Evolution since last week	Evolution since last month	Evolution since last year
<b>Carcasse</b>	Average A/C/Z-R3	493.4	+ 0.1%	+ 0.3%	+ 22.0%
	Young Bovines (Z)	493.7	+ 0.3%	+ 0.8%	+ 24.6%
	Young Bulls (A)	495.1	+ 0.1%	+ 0.7%	+ 22.7%
	Steers (C)	483.4	- 0.8%	- 2.4%	+ 15.7%
	Cows (D)	432.5	- 1.1%	- 1.8%	+ 28.6%
	Heifers (E)	509.2	+ 0.2%	+ 0.2%	+ 22.2%
	Calves slaughtered <8M	627.9	+ 2.2%	+ 4.6%	+ 17.1%
<b>Live Animals</b>	Male Calves Dairy Type	84.95	- 15.4%	- 19.0%	+ 2.4%
	Male Calves Beef Type	225.8	- 1.8%	- 1.3%	+ 4.7%
	Young Store Cattle	3.12	+ 0.7%	+ 0.2%	+ 15.4%
	Yearling Male Store Cattle	3.32	- 2.8%	- 4.5%	- 0.0%
	Yearling Female Store Cattle	2.76	- 1.0%	- 2.5%	+ 7.8%

Sources : MSs notifications (Regulation (EU) 1182/2017 and 1184/2017)

# KARKAS FİYATLARI

AB DEĞİŞİM  
A/C/Z. R3



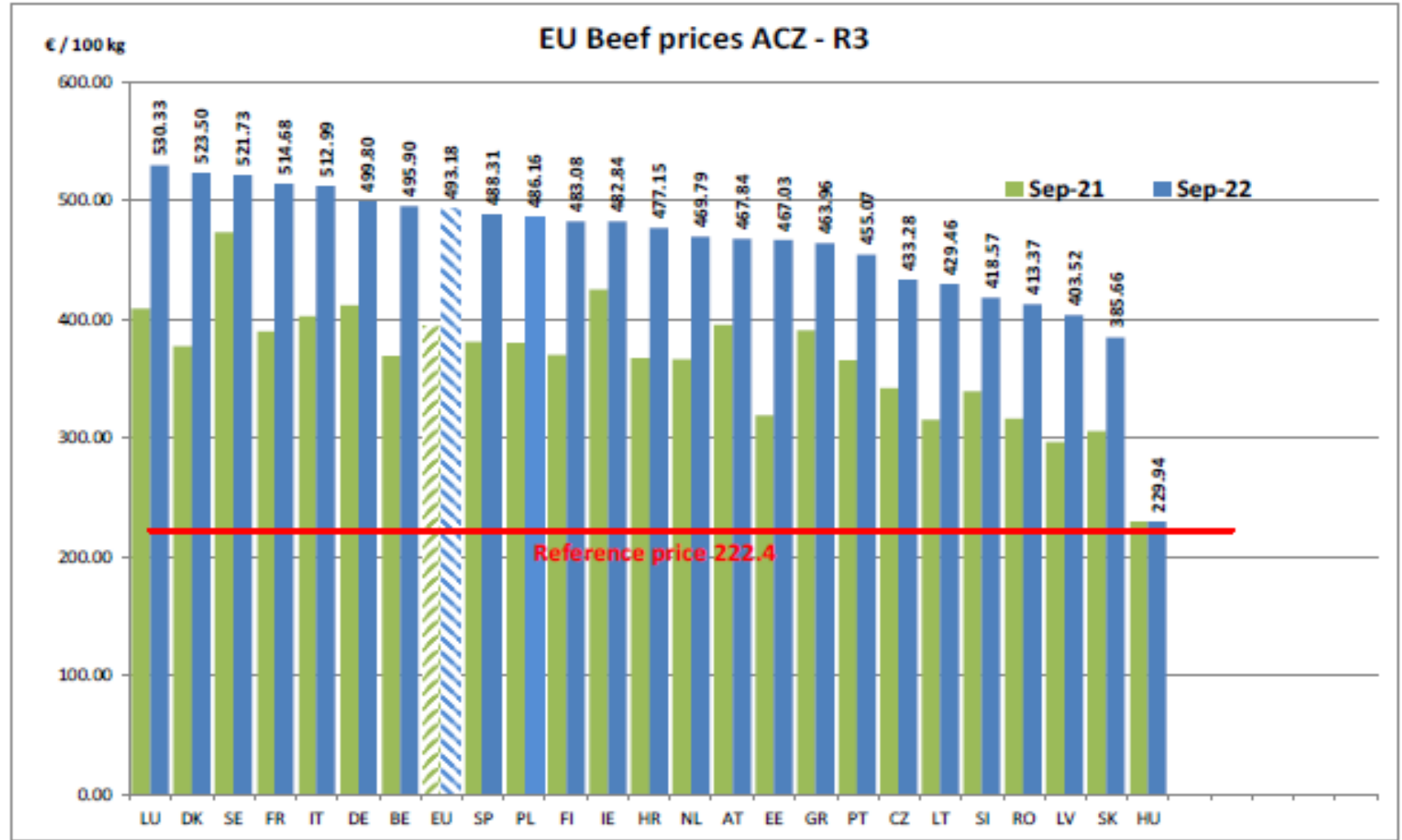
ar 2022





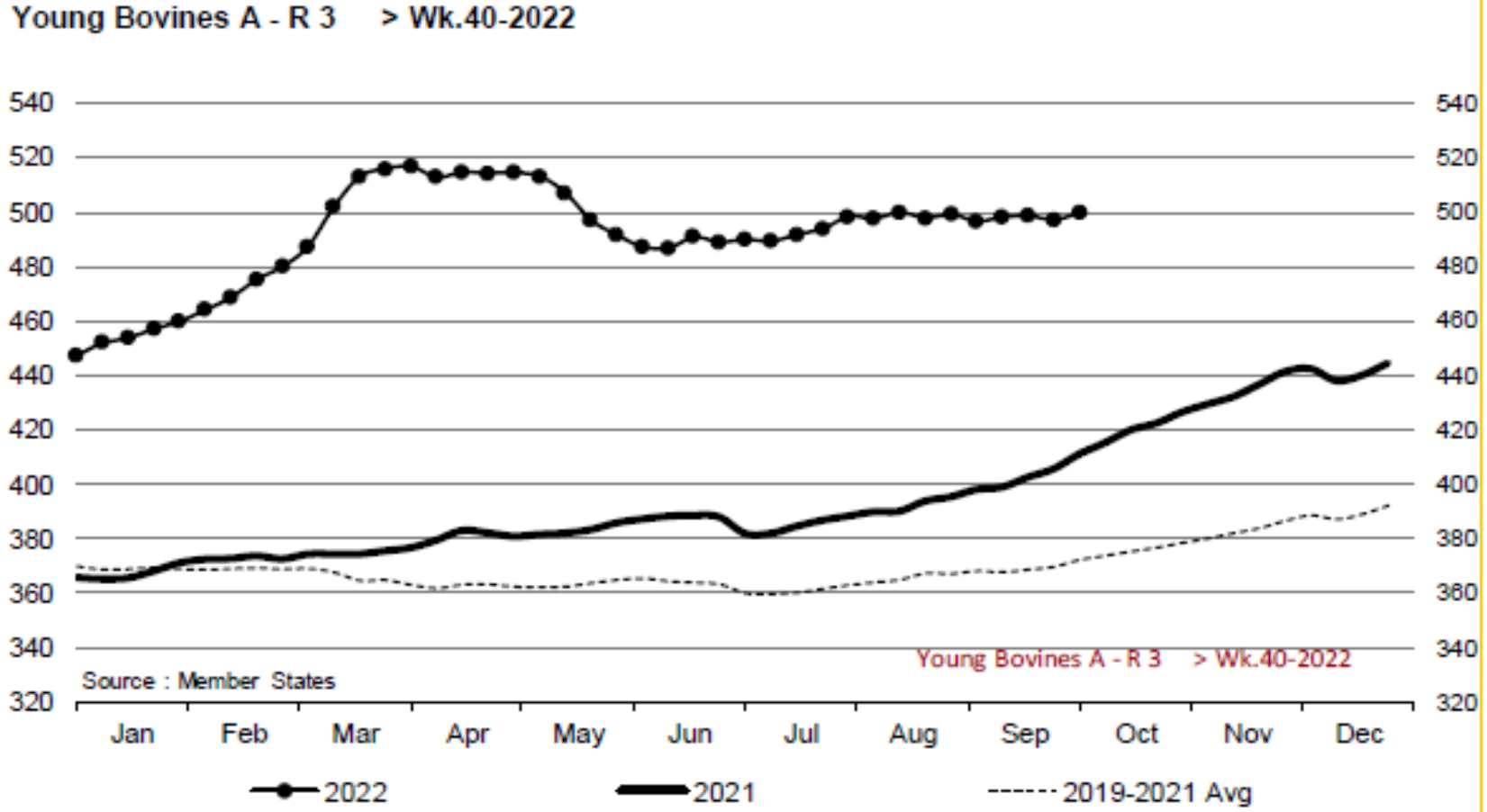


European  
Commission





Young Bovines A - R 3 > Wk.40-2022



Source : Member States

Young Bovines A - R 3 > Wk.40-2022

Price in week 40 : 500.00  
% change y/y : + 21.6%

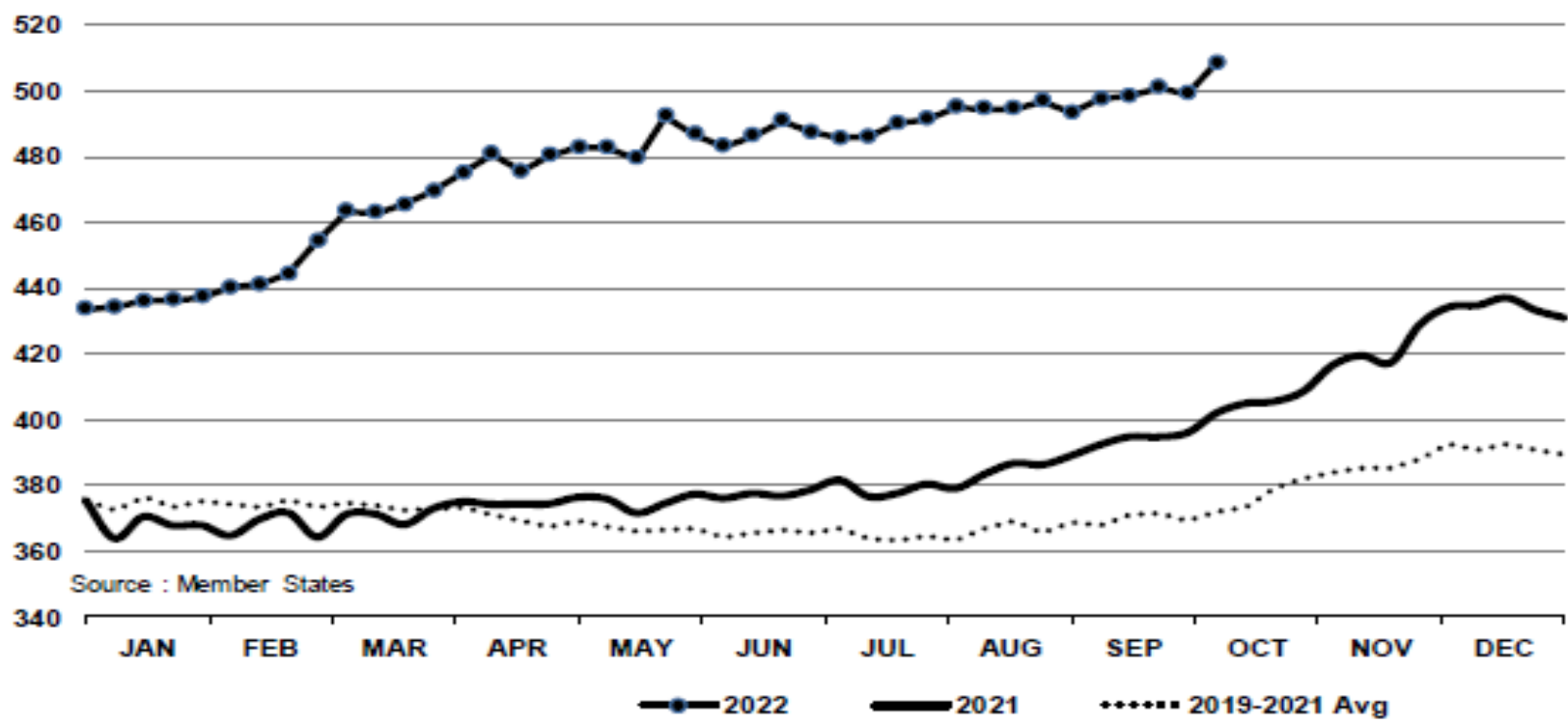
Average price in September 2022 : #NAME?  
% change y/y : #NAME?

# KARKAS FİYATLARI



# AB DEĞİŞİM GENÇ SIĞIR – 8-12 M Z.R.3

In € / 100 kg      Young Bovines 8-12m Z - R 3      > Wk.40-2022



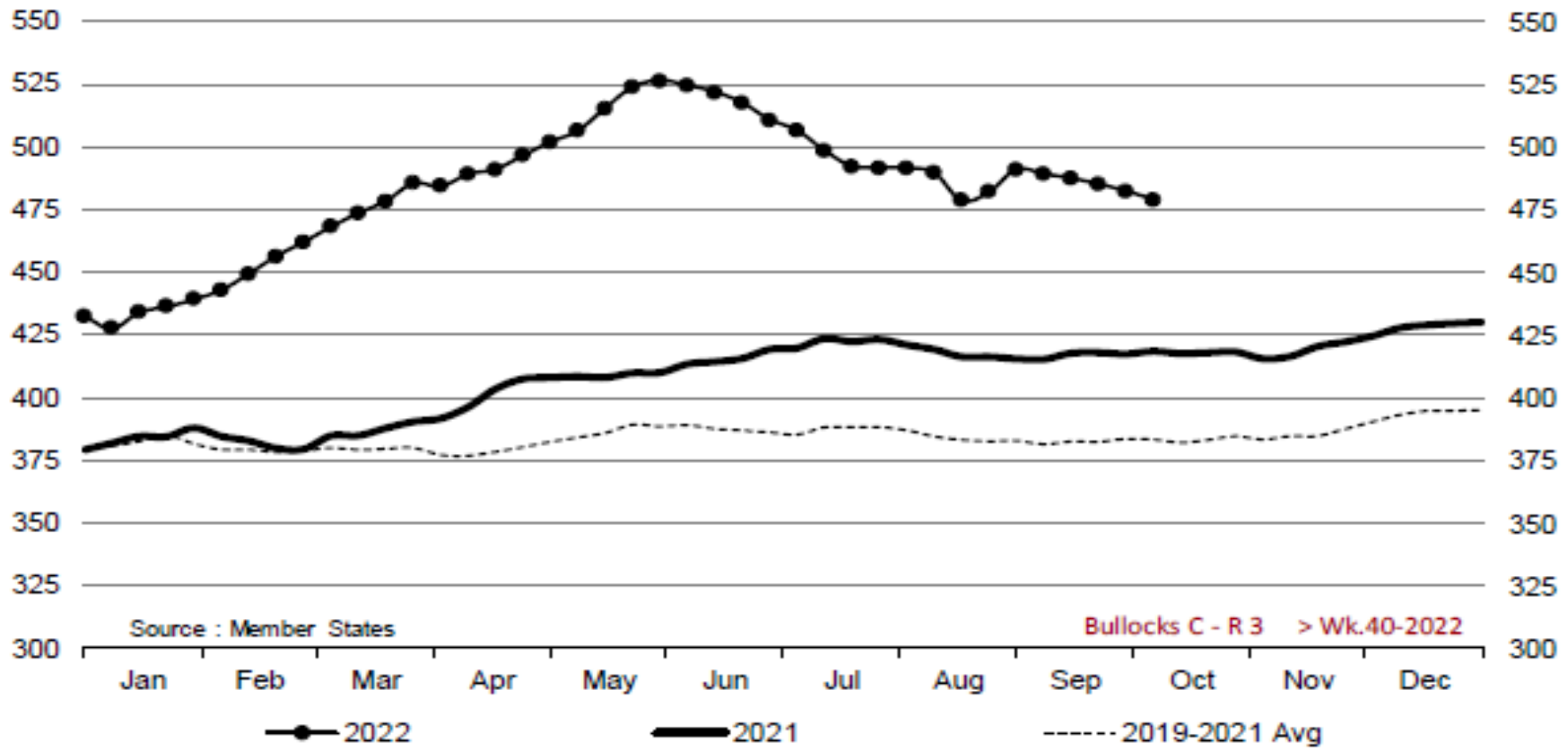
Source : Member States

● 2022      — 2021      ..... 2019-2021 Avg

Price in week 40 : 508.36      08/09/2022      Average price in September 2022 : #####  
 % change y/y : + 26.5%      % change y/y : #####



Bullocks C - R 3 > Wk.40-2022

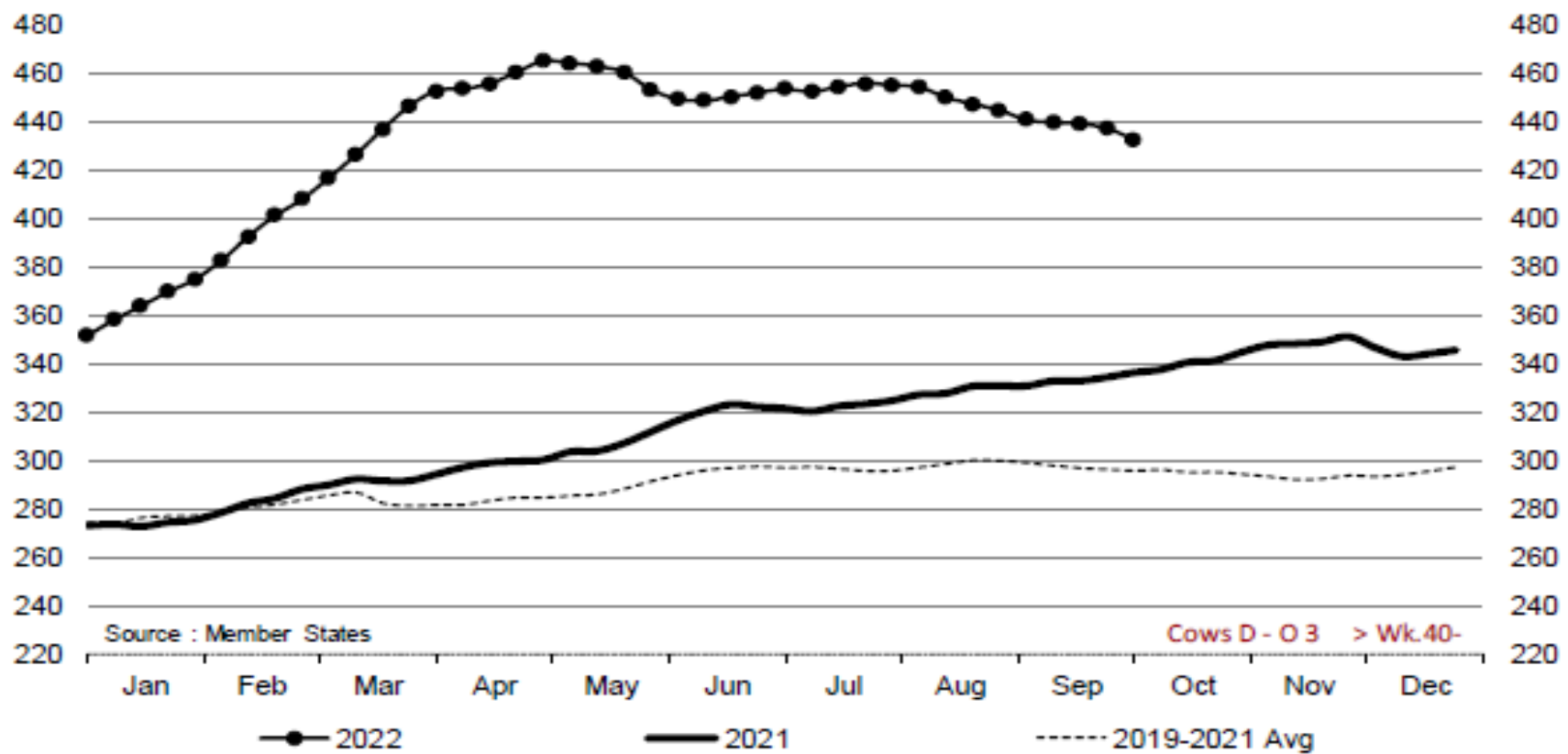


Price in week 40 : 478.86  
% change y/y : + 14.5%

Average price in September 2022 : #NAME?  
% change y/y : #NAME?



Cows D - O 3 > Wk.40-2022

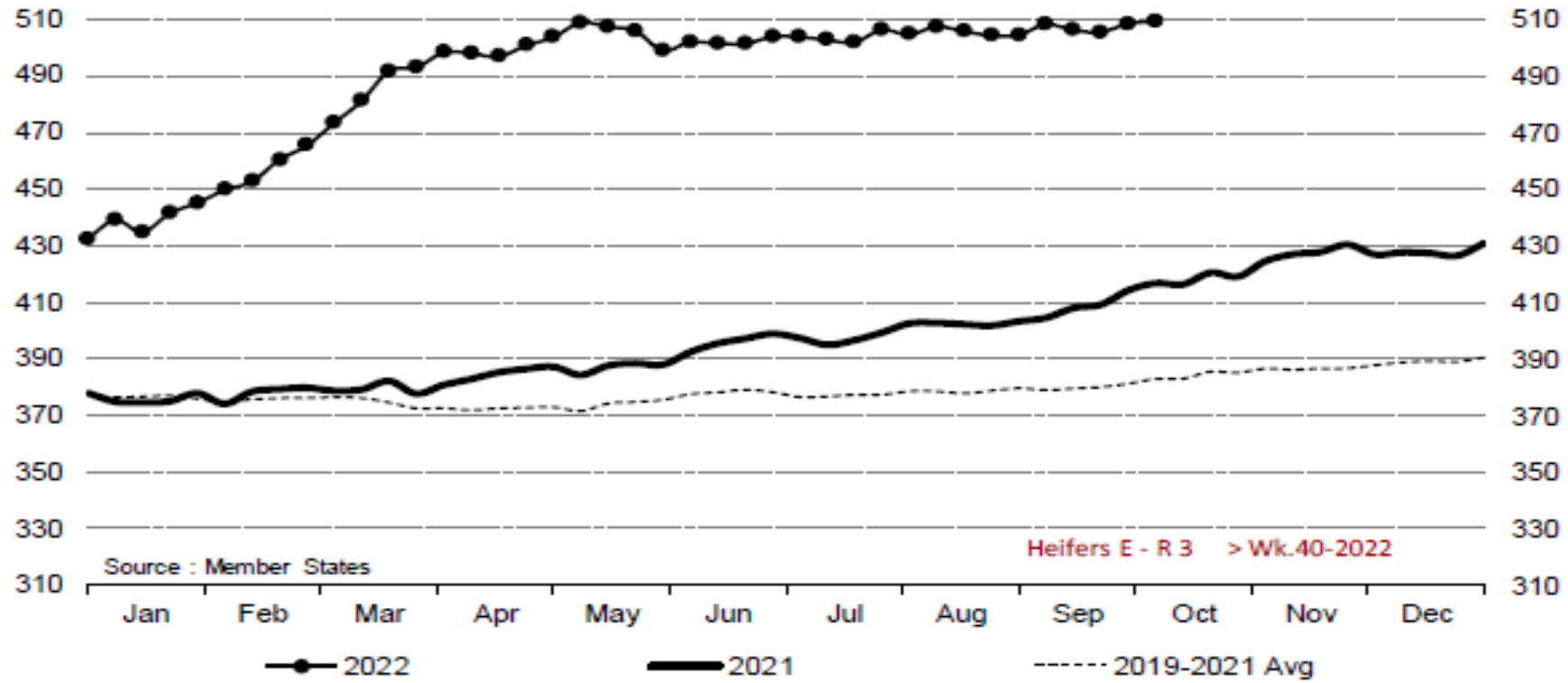


Price in week 40 : 432.58  
% change y/y : + 28.6%

Average price in September 2022 : #NAME?  
% change y/y : #NAME?



## Heifers E - R 3 > Wk.40-2022

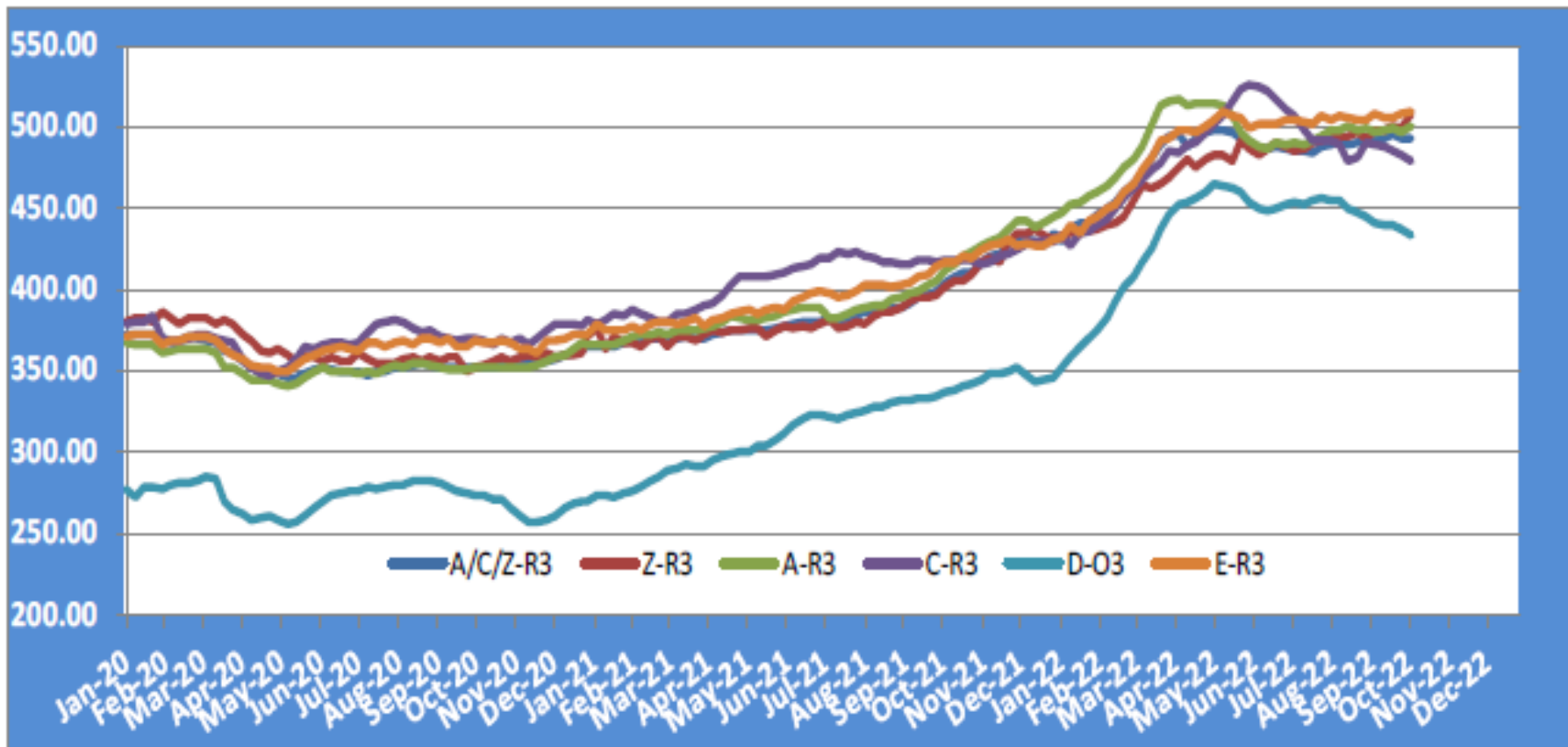


Price in week 40 : 509.27  
% change y/y : + 22.2%

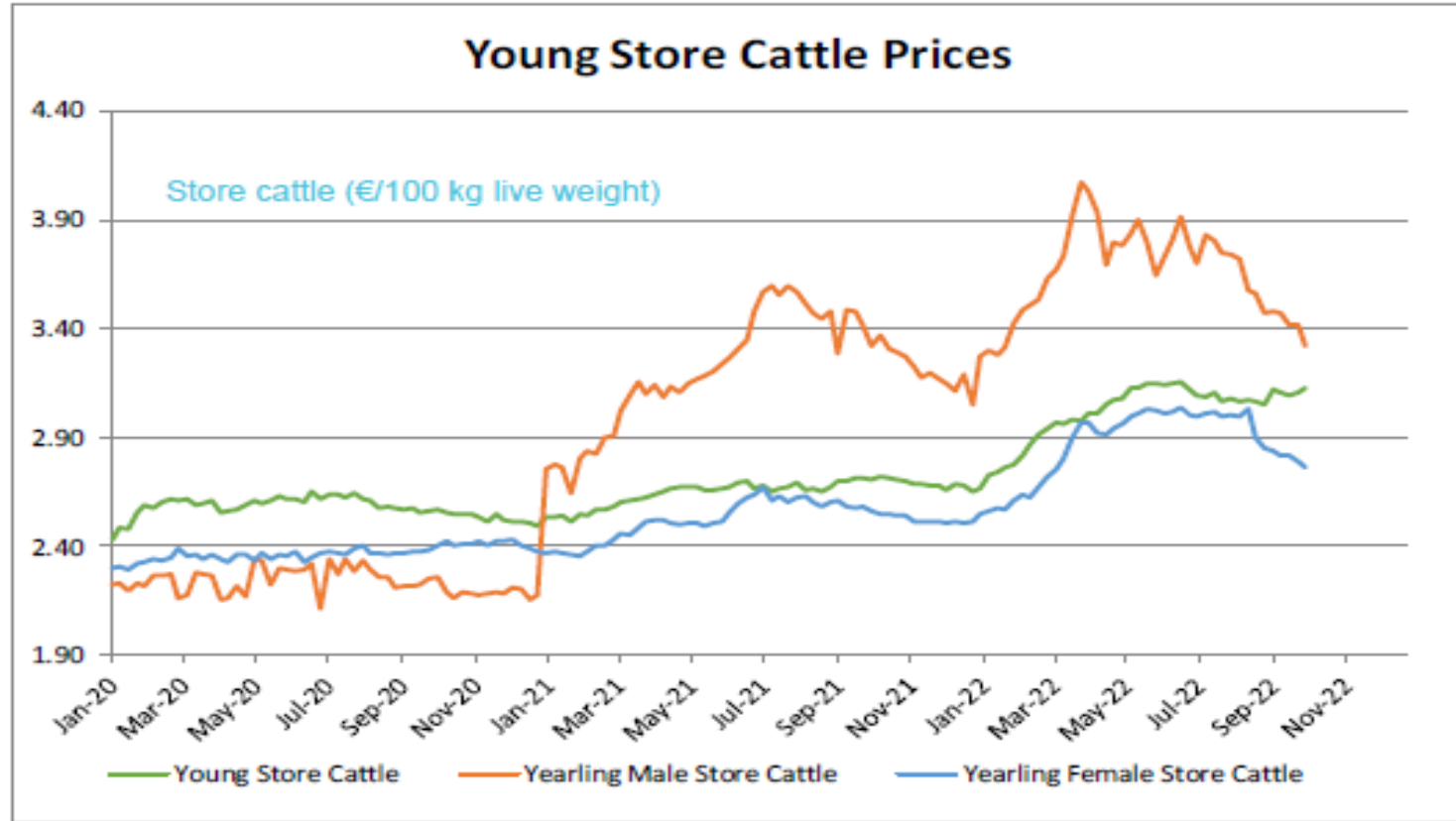
Average price in September 2022 : #NAME?  
% change y/y : #NAME?

# KARKAS FİYATLARI

# AB TÜM KATEGORİLERE GLOBAL BAKIŞ



## Besilik siğır (€ / 100 kg canlı ağırlık)

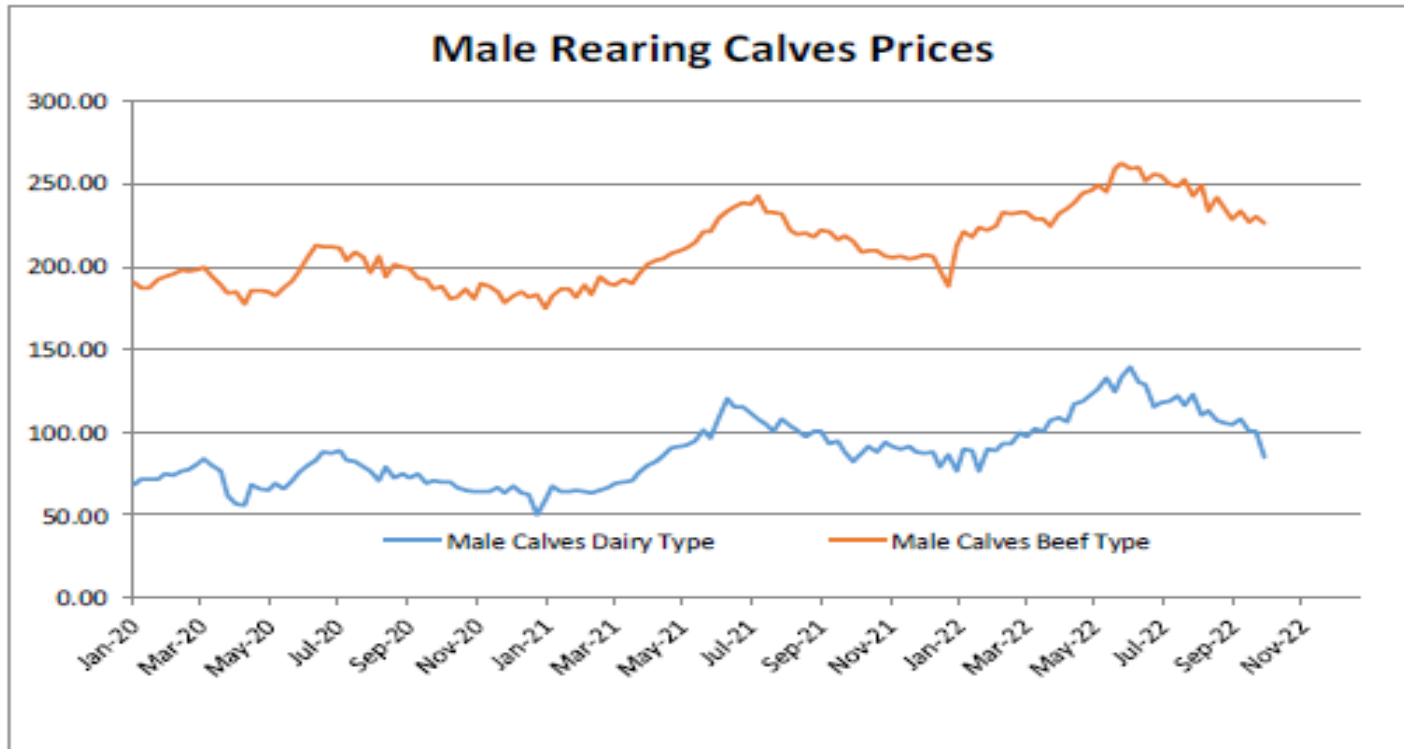


Young Store Cattle Price in	Week 40	3.12	Yearling Male Store Cattle Price	3.32
	Change y/y	+15.4%	Change y/y	-0.0%
Yearling Female Store Cattle Price		2.76		
	Change y/y	+7.8%		



### 8 gün ve 4 haftalık erkek buzağlar (€/baş)

Male calves aged between 8 days and 4 weeks (€/head)

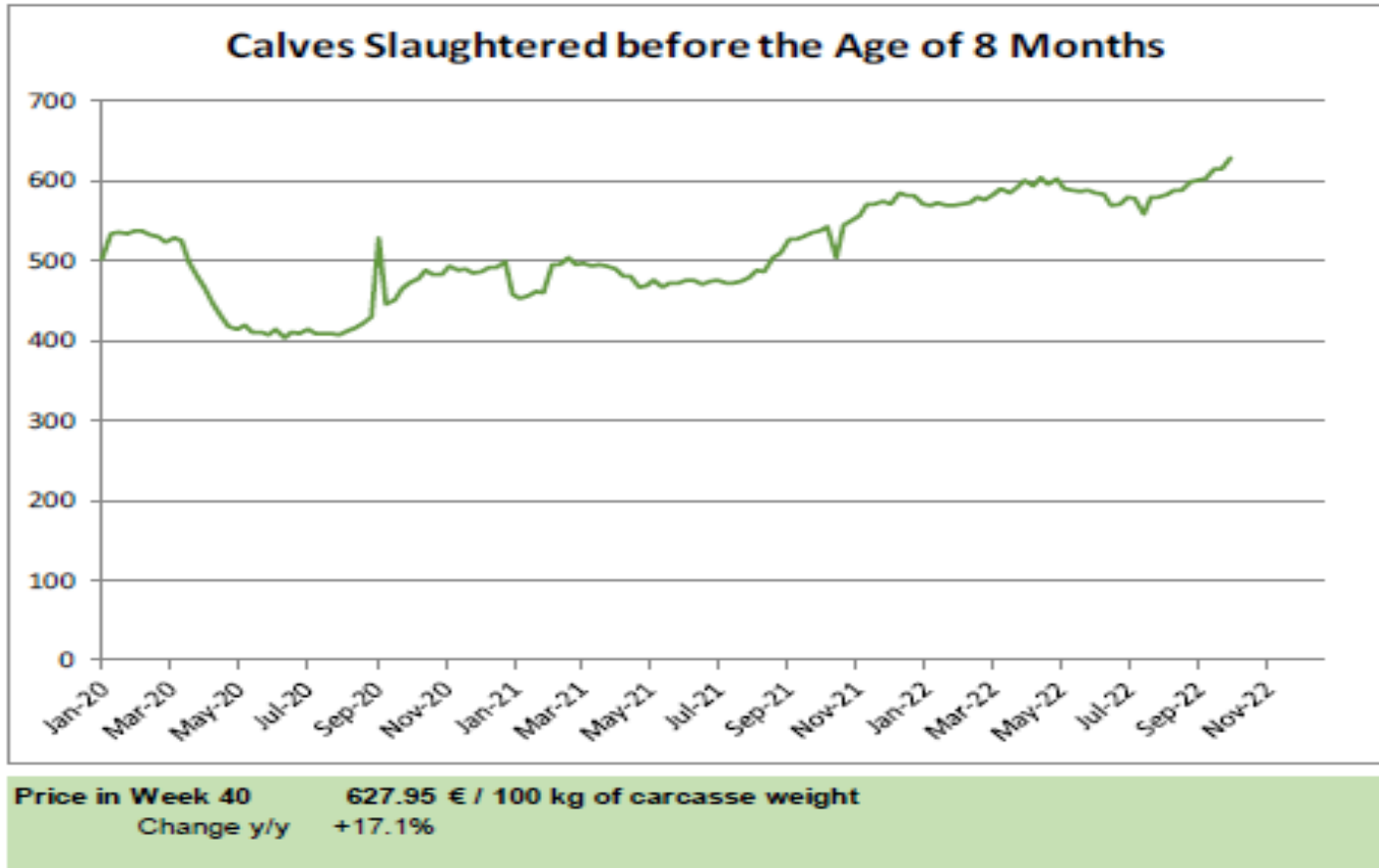


**Male Rearing Calves Beef type**  
Price in Week 40 225.89  
Change y/y +4.7%

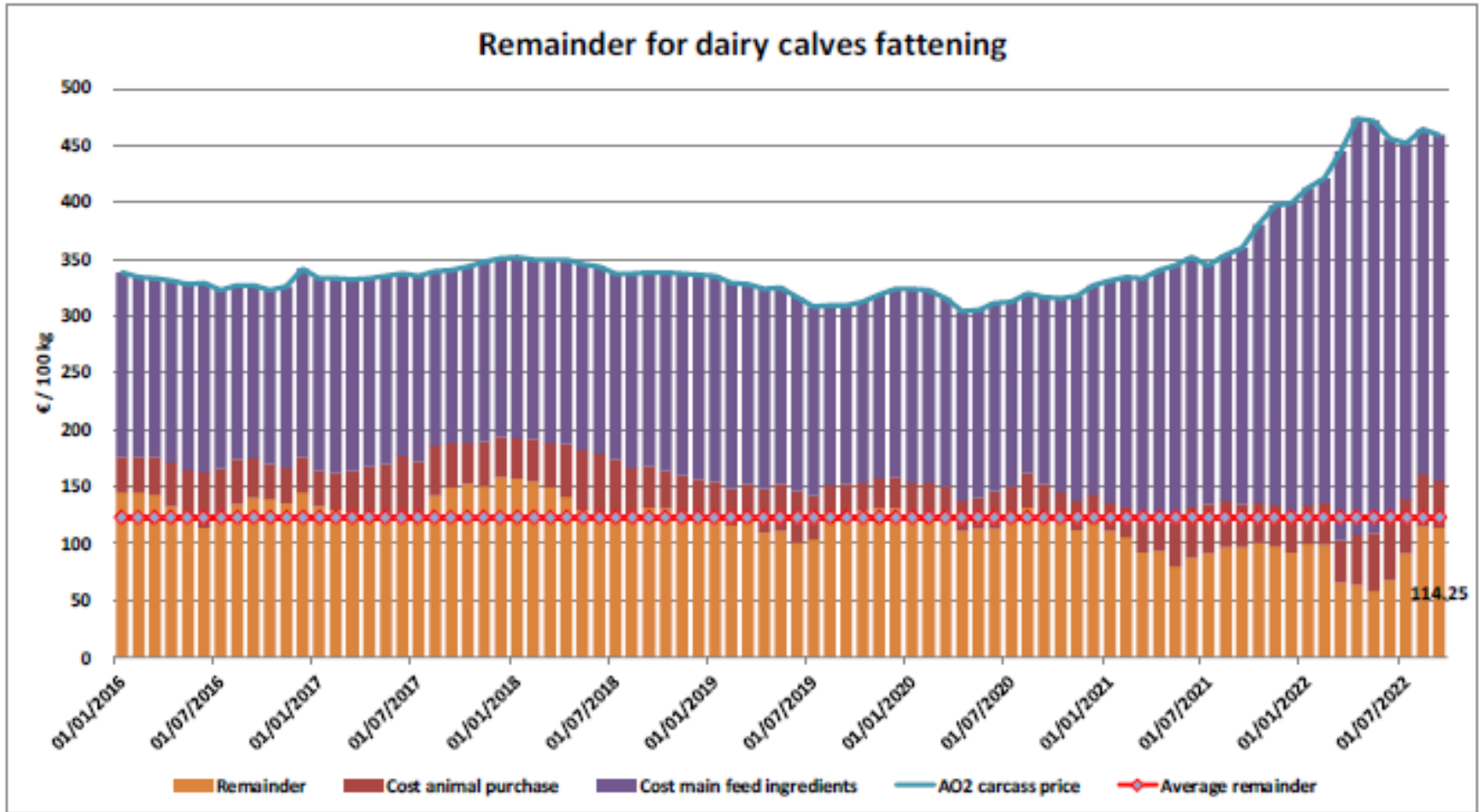
**Male Rearing Calves Dairy type**  
Price in Week 40 84.95  
Change y/y +2.4%

### 8 aylıktan küçük kesilen buzağular (€ / 100 kg canlı ağırlık)

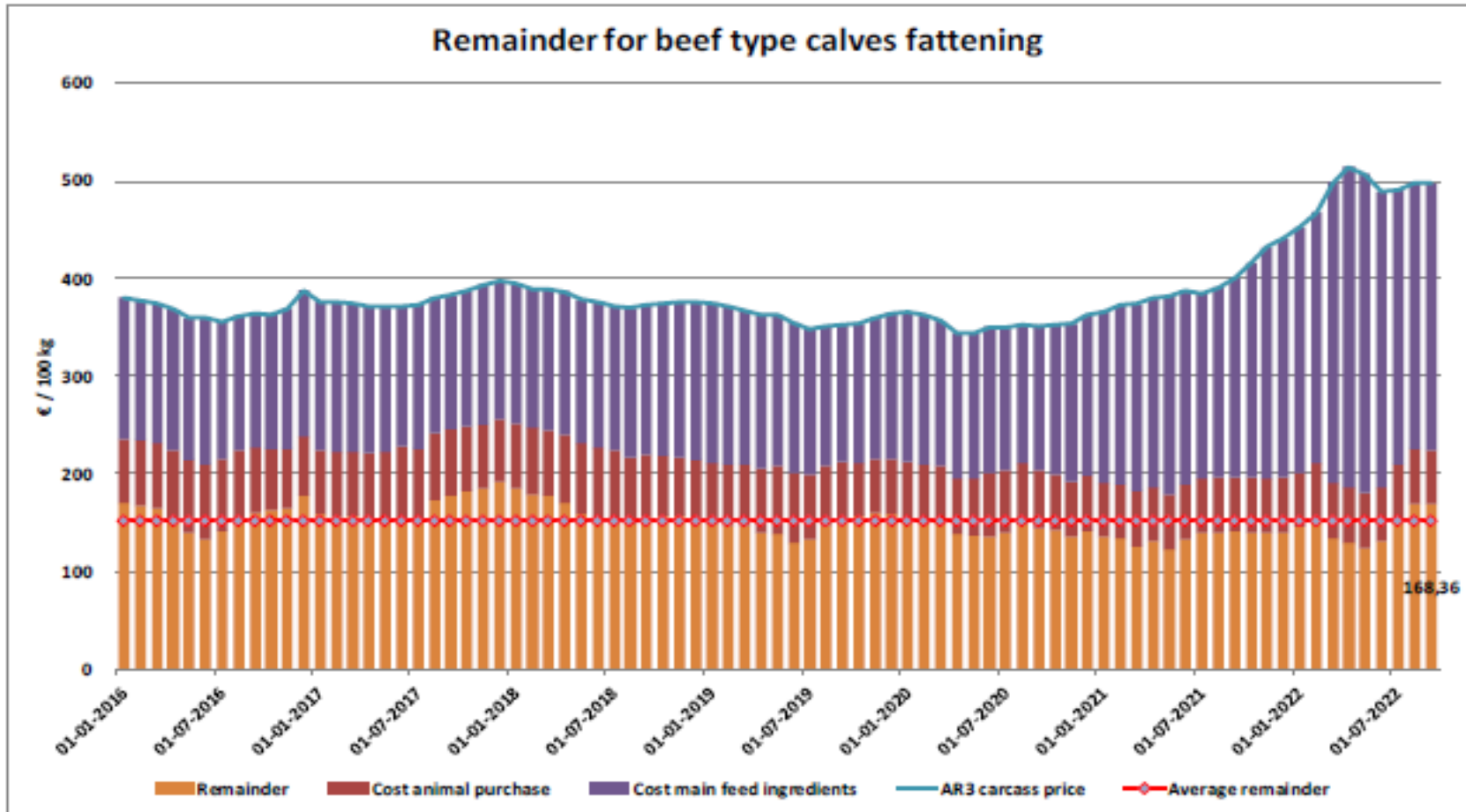
Calves slaughtered before the age of less than 8 months  
(€/100 kg cw)



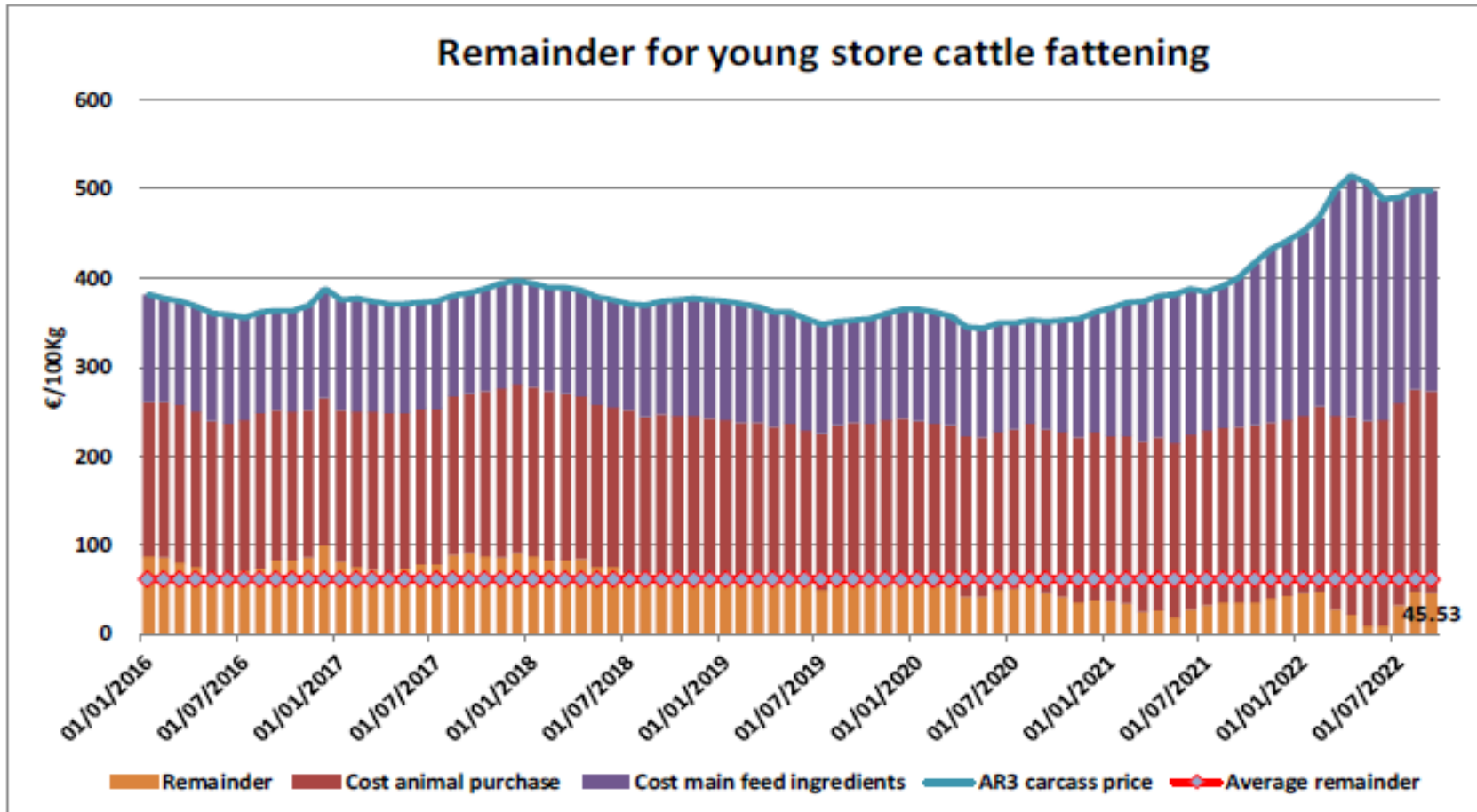
## Süt Buzağları Besiciliği İçin Kalanlar



## Sığır Tipi Buzağı Besiciliği İçin Kalanlar



## Genç Besilik Sığır Besiciliği İçin Kalanlar



## AB sığır eti ve canlı hayvan ihracatı (yağlar dahil): Pazar Rakamları (COMEXT – ton ca)

In Tons of Carcase Weight

Destinations	2020		2021		Jan to Jul 2022		Compared to Jan to Jul 2021
	Tons	% Extra EU	Tons	% Extra EU	Tons	% Extra EU	
United Kingdom	450.456	39,5%	344.435	33,4%	229.104	40,2%	+25,8%
Israel	56.139	4,9%	66.022	6,4%	37.246	6,5%	-4,6%
Ghana	47.344	4,2%	47.640	4,6%	23.832	4,2%	-17,5%
Bosnia-Herz.	34.896	3,1%	40.449	3,9%	20.699	3,6%	-8,4%
Philippines	33.650	3,0%	34.666	3,4%	18.042	3,2%	-18,2%
Ivory Coast	32.433	2,8%	29.236	2,8%	17.764	3,1%	-5,7%
Switzerland	26.223	2,3%	28.718	2,8%	15.157	2,7%	-14,2%
Lebanon	33.709	3,0%	19.527	1,9%	14.716	2,6%	+12,3%
Japan	11.885	1,0%	21.888	2,1%	12.909	2,3%	+16,0%
Algeria	39.396	3,5%	24.111	2,3%	11.579	2,0%	-37,8%
Canada	20.450	1,8%	20.676	2,0%	11.444	2,0%	+16,0%
Other Destinations	352.811	31,0%	353.444	34,3%	157.540	27,6%	-24,1%
Extra-EU	1.139.392		1.030.812		570.032		-3,6%
% Change				-9,5%			

In Thousand Euros

	2020		2021		Jan to Jul 2022		Compared to Jan to Jul 2021
	1 000 EUR	% Extra EU	1 000 EUR	% Extra EU	1 000 EUR	% Extra EU	
United Kingdom	1.508.377	40,2%	1.491.830	38,4%	1.007.811	41,8%	+32,5%
Israel	266.074	7,1%	328.295	8,4%	213.010	8,8%	+12,3%
Ghana	43.585	1,2%	48.021	1,2%	28.226	1,2%	-0,7%
Bosnia-Herz.	96.620	2,6%	126.247	3,2%	84.924	3,5%	+27,6%
Philippines	61.861	1,6%	73.028	1,9%	47.075	2,0%	+8,7%
Ivory Coast	21.626	0,6%	25.684	0,7%	14.907	0,6%	-5,9%
Switzerland	142.125	3,8%	171.272	4,4%	112.305	4,7%	+13,8%
Lebanon	131.329	3,5%	80.664	2,1%	75.921	3,1%	+40,8%
Japan	43.177	1,1%	98.109	2,5%	75.221	3,1%	+76,0%
Algeria	193.457	5,2%	111.646	2,9%	71.325	3,0%	-16,1%
Canada	65.044	1,7%	73.398	1,9%	46.797	1,9%	+41,2%
Other Destinations	1.182.539	31,5%	1.257.525	32,4%	635.894	26,3%	-10,6%
Extra-EU	3.755.813		3.885.719		2.413.416		+13,4%
% Change				+3,5%			

## AB sığır eti ihracatı (yağlar hariç): Pazar Rakamları (COMEXT – ton ca)

Destinations	2018		2019		2020		2021		Jan-Aug 22		Compared to
	tonnes	%	tonnes	%	tonnes	%	tonnes	%	tonnes	%	
Israel	47 036	6.8%	48 505	7.1%	56 139	8.1%	66 022	9.6%	43 067	11.1%	- 6.0%
Ghana	38 766	5.3%	39 196	5.7%	47 344	6.9%	47 640	6.8%	25 784	6.6%	- 22.6%
Bosnia-Herz.	37 675	5.4%	40 013	5.8%	34 896	5.1%	40 449	5.9%	25 008	6.4%	- 6.2%
Philippines	27 857	4.0%	31 302	4.6%	33 650	4.9%	34 666	5.1%	20 924	5.4%	- 14.3%
Ivory Coast	36 064	5.2%	33 396	4.9%	32 433	4.7%	29 236	4.3%	20 732	5.3%	- 2.5%
Switzerland	20 123	2.9%	21 398	3.1%	26 223	3.8%	28 718	4.2%	17 606	4.5%	- 13.3%
Lebanon	42 362	6.1%	36 221	5.3%	33 709	4.9%	19 527	2.8%	16 425	4.2%	+ 11.2%
Japan	3 452	0.5%	7 982	1.2%	11 885	1.7%	21 888	3.2%	14 465	3.7%	+ 6.2%
Canada	2 225	0.3%	6 756	1.0%	20 450	3.0%	20 676	3.0%	13 008	3.4%	+ 11.0%
Algeria	35 410	5.1%	57 152	8.3%	39 396	5.7%	24 111	3.5%	12 245	3.2%	- 34.2%
Egypt	6 218	0.9%	3 105	0.5%	7 718	1.1%	10 540	1.5%	11 151	2.9%	+ 96.5%
Kosovo	6 164	0.9%	9 896	1.4%	10 391	1.5%	16 488	2.4%	10 779	2.8%	+ 0.1%
Norway	7 783	1.1%	7 622	1.1%	12 873	1.9%	18 233	2.7%	10 669	2.8%	- 27.0%
Ukraine	10 445	1.5%	13 627	2.0%	14 988	2.2%	15 076	2.2%	8 553	2.2%	- 8.2%
Hong Kong	55 439	8.0%	46 639	6.8%	56 713	8.2%	44 823	6.5%	7 563	2.0%	- 77.7%
Chile	33 954	4.9%	12 461	1.8%	8 664	1.3%	9 915	1.4%	7 341	1.9%	+ 66.2%
Other Destinations	282 450	40.9%	271 405	39.5%	241 466	35.0%	238 369	34.7%	122 504	31.6%	
<b>Total (without UK)</b>	<b>691 423</b>		<b>686 677</b>		<b>688 936</b>		<b>686 377</b>		<b>387 822</b>		
% change			- 1%		+ 0%		- 0%		- 16.5%		



## AB sığır eti yağları ihracatı: Pazar Rakamları (COMEXT – ton ca)

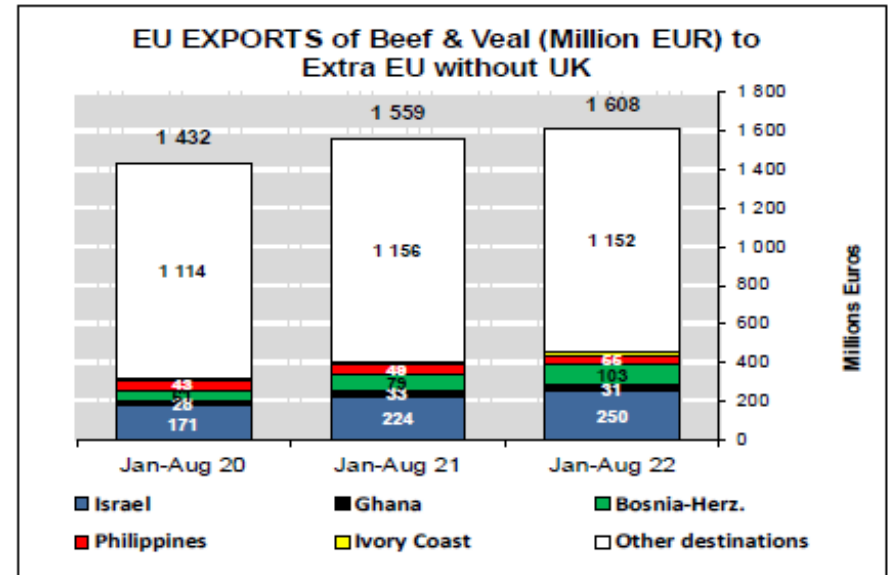
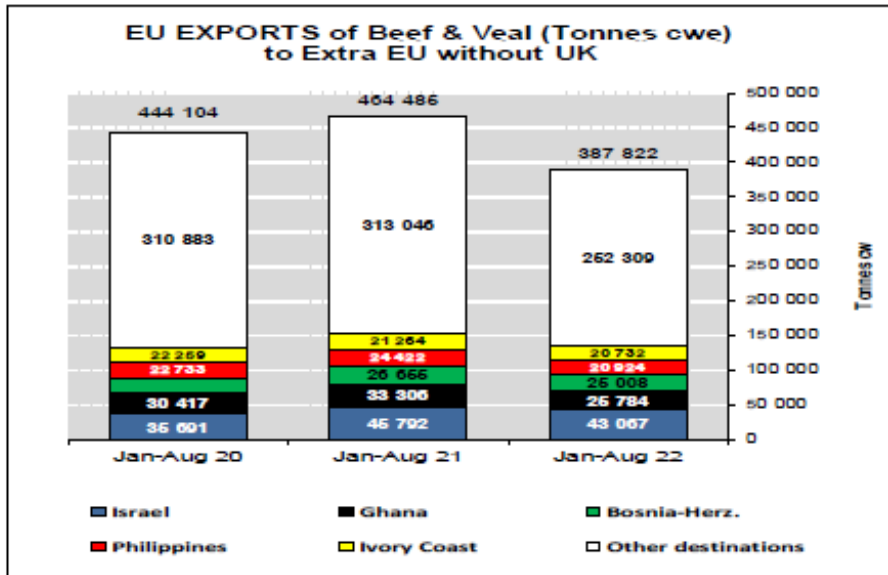
### Destinations

	2018		2019		2020		2021		Jan-Aug 22		Compared to
	tonnes	%	tonnes	%	tonnes	%	tonnes	%	tonnes	%	
Ghana	36 766	8.1%	39 196	8.5%	47 344	10.0%	47 640	9.8%	25 784	9.4%	- 22.6%
Bosnia-Herz.	35 064	7.7%	37 700	8.2%	32 596	6.9%	37 526	7.8%	22 980	8.3%	- 7.9%
Philippines	27 857	6.1%	31 302	6.8%	33 650	7.1%	34 666	7.2%	20 924	7.6%	- 14.3%
Ivory Coast	36 064	7.9%	33 396	7.2%	32 433	6.8%	29 236	6.0%	20 732	7.5%	- 2.5%
Switzerland	19 073	4.2%	20 320	4.4%	25 170	5.3%	27 395	5.7%	16 748	6.1%	- 13.5%
Israel	21 425	4.7%	21 902	4.7%	21 131	4.4%	20 548	4.2%	15 286	5.5%	- 0.6%
Japan	3 452	0.8%	7 982	1.7%	11 885	2.5%	21 888	4.5%	14 465	5.3%	+ 6.2%
Canada	2 225	0.5%	6 756	1.5%	20 450	4.3%	20 676	4.3%	13 008	4.7%	+ 11.0%
Norway	7 780	1.7%	7 622	1.7%	12 873	2.7%	18 231	3.8%	10 669	3.9%	- 27.0%
Ukraine	9 866	2.2%	12 684	2.7%	13 992	2.9%	13 679	2.8%	8 152	3.0%	- 6.4%
Hong Kong	55 439	12.1%	46 639	10.1%	56 713	11.9%	44 823	9.3%	7 563	2.7%	- 77.7%
Chile	16 410	3.6%	12 461	2.7%	8 664	1.8%	9 915	2.0%	7 341	2.7%	+ 66.2%
USA	5 441	1.2%	7 866	1.7%	12 308	2.6%	11 430	2.4%	6 732	2.4%	- 15.8%
North Macedonia	9 483	2.1%	10 744	2.3%	10 034	2.1%	12 777	2.6%	6 692	2.4%	- 25.2%
Angola	11 470	2.5%	8 410	1.8%	9 324	2.0%	7 600	1.6%	4 465	1.6%	- 1.0%
Vietnam	8 159	1.8%	10 014	2.2%	6 274	1.3%	7 452	1.5%	4 331	1.6%	- 13.2%
Other Destinations	150 390	33.0%	146 756	31.8%	120 141	25.3%	118 463	24.5%	69 564	25.3%	
<b>Total (without UK)</b>	<b>456 364</b>		<b>461 750</b>		<b>474 982</b>		<b>483 946</b>		<b>275 434</b>		
% change			+ 1%		+ 3%		+ 2%		- 16.8%		



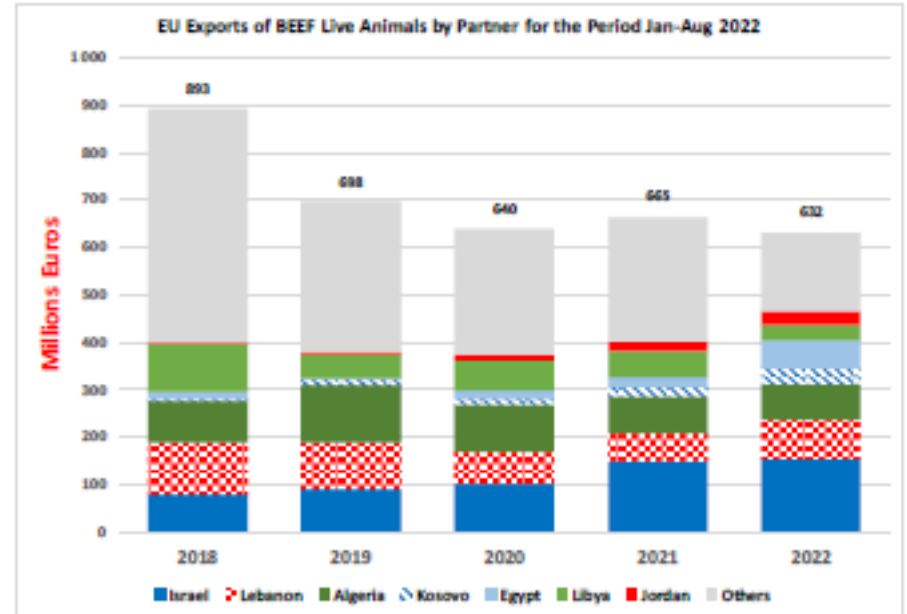
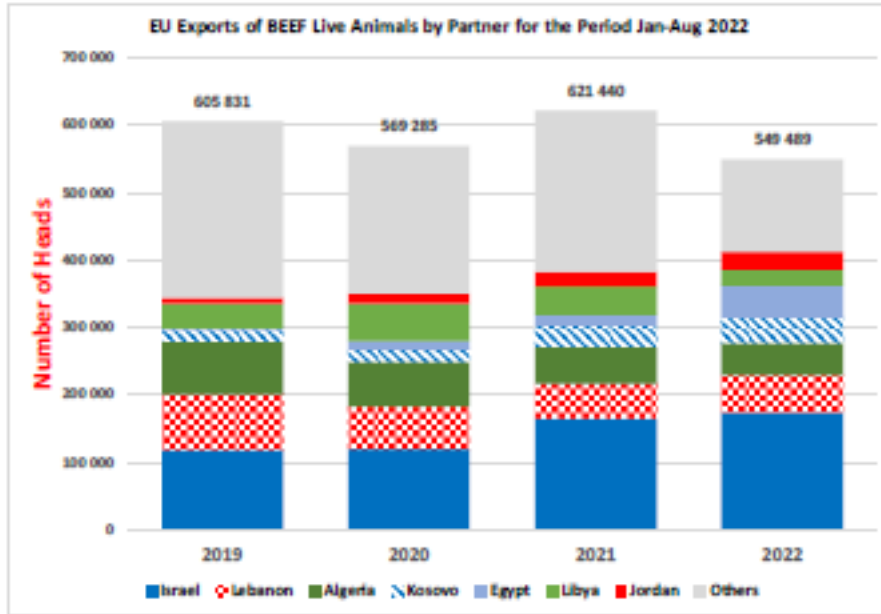


## AB sığır eti ve canlı hayvan ihracatı (yağlar hariç):





## AB canlı hayvan ihracatı:



## AB Sığır Eti ve Canlı Hayvan İthalatları (yağlar dahil):

In Tons of Carcase Weight

Origins	2020		2021		Jan to Jul 2022		Compared to Jan to Jul 2021
	Tons	% Extra EU	Tons	% Extra EU	Tons	% Extra EU	
United Kingdom	120.744	35,1%	87.539	28,3%	77.894	34,6%	+68,7%
Brazil	84.139	24,4%	81.573	26,4%	50.832	22,6%	+10,6%
Argentina	56.421	16,4%	52.286	16,9%	36.636	16,3%	+34,0%
Uruguay	34.611	10,0%	42.669	13,8%	26.866	11,9%	-4,3%
USA	16.532	4,8%	14.826	4,8%	10.389	4,6%	+42,8%
Australia	11.058	3,2%	8.925	2,9%	6.172	2,7%	-5,1%
New Zealand	6.116	1,8%	4.378	1,4%	3.189	1,4%	+37,1%
Paraguay	4.234	1,2%	3.933	1,3%	2.872	1,3%	+48,4%
Japan	789	0,2%	1.478	0,5%	2.305	1,0%	+++
Switzerland	4.187	1,2%	4.714	1,5%	2.130	0,9%	-15,7%
Namibia	1.445	0,4%	1.996	0,6%	2.095	0,9%	+++
Other Destinations	4.130	1,2%	4.625	1,5%	3.516	1,6%	+40,1%
Extra-EU	344.404		308.942		224.894		+30,9%
% Change				-10,3%			

In Thousand Euros

	2020		2021		Jan to Jul 2022		Compared to Jan to Jul 2021
	1 000 EUR	% Extra EU	1 000 EUR	% Extra EU	1 000 EUR	% Extra EU	
United Kingdom	483.287	26,5%	358.525	20,1%	326.532	22,1%	+77,0%
Brazil	377.626	20,7%	386.666	21,7%	298.720	20,2%	+46,7%
Argentina	358.357	19,7%	376.451	21,1%	321.664	21,8%	+92,2%
Uruguay	210.062	11,5%	247.057	13,9%	218.136	14,8%	+47,3%
USA	154.464	8,5%	155.927	8,7%	122.203	8,3%	+72,4%
Australia	91.489	5,0%	90.483	5,1%	69.281	4,7%	+10,6%
New Zealand	41.142	2,3%	31.627	1,8%	27.523	1,9%	+81,1%
Paraguay	20.834	1,1%	20.484	1,1%	18.774	1,3%	+++
Japan	10.314	0,6%	25.588	1,4%	19.369	1,3%	+78,7%
Switzerland	44.984	2,5%	53.395	3,0%	25.340	1,7%	-10,1%
Namibia	5.725	0,3%	6.902	0,4%	9.176	0,6%	+++
Other Destinations	24.052	1,3%	30.274	1,7%	21.567	1,5%	+39,5%
Extra-EU	1.822.336		1.783.379		1.478.285		+61,2%
% Change				-2,1%			

## AB Sığır Eti İthalatları (yağlar hariç):

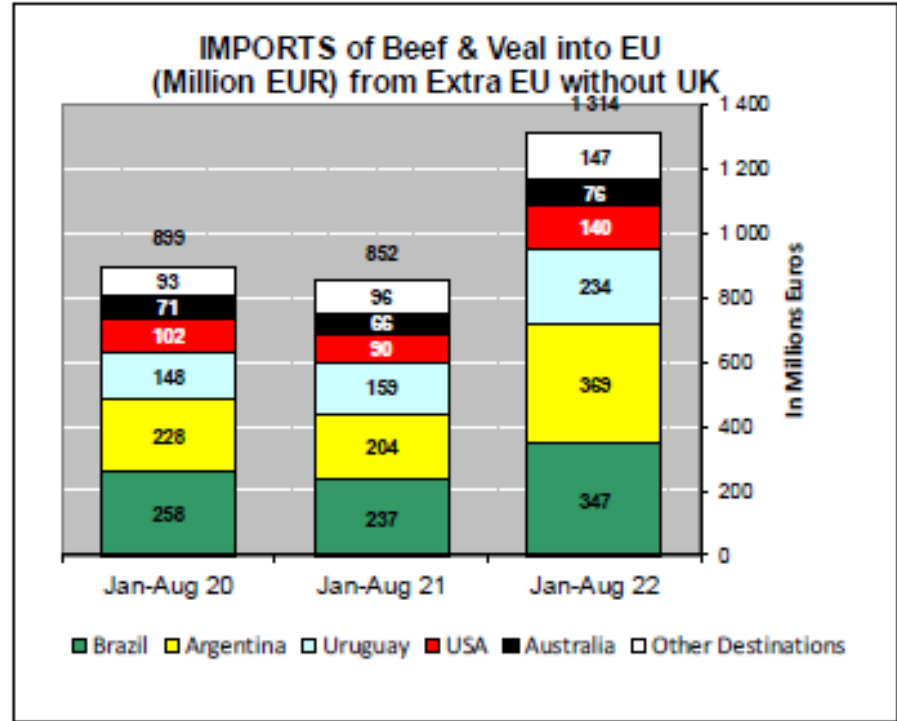
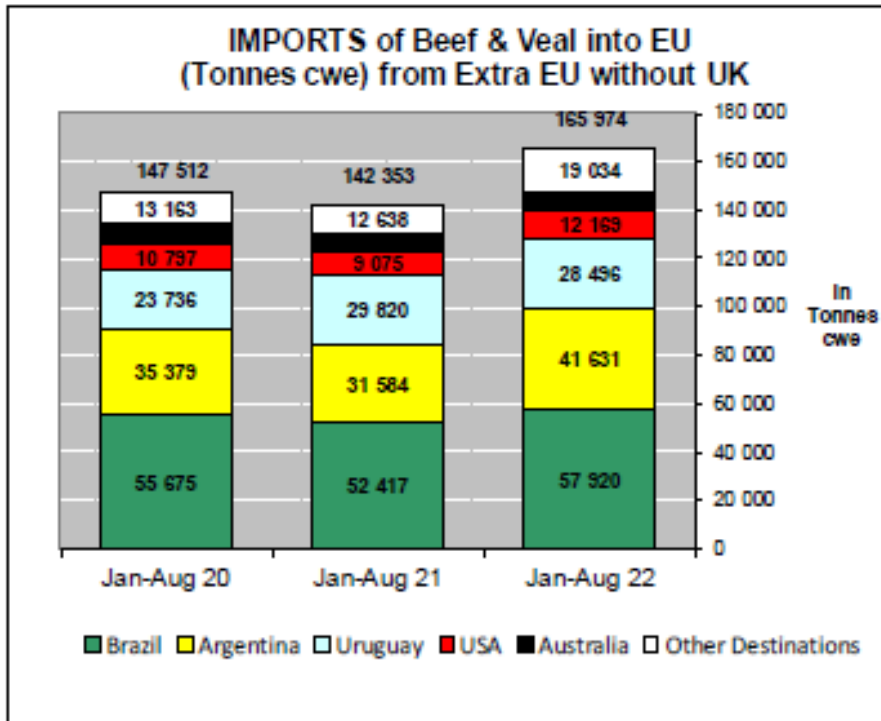
### Origins

	2018		2019		2020		2021		Jan-Aug 22		Compared to
	tonnes	%	tonnes	%	tonnes	%	tonnes	%	tonnes	%	
Brazil	103 979	37.3%	99 569	36.4%	84 139	37.6%	81 573	36.8%	57 920	34.9%	+ 10.5%
Argentina	61 400	22.0%	65 324	23.9%	56 421	25.2%	52 288	23.6%	41 631	25.1%	+ 31.8%
Uruguay	47 922	17.2%	40 483	14.8%	34 611	15.5%	42 669	19.3%	28 496	17.2%	- 4.4%
USA	19 268	6.9%	16 852	6.2%	16 532	7.4%	14 828	6.7%	12 169	7.3%	+ 34.1%
Australia	17 354	6.2%	16 432	6.0%	11 058	4.9%	8 925	4.0%	6 724	4.1%	- 1.4%
New Zealand	7 109	2.6%	6 712	2.5%	6 116	2.7%	4 378	2.0%	3 591	2.2%	+ 25.1%
Paraguay	5 520	2.0%	5 203	1.9%	4 234	1.9%	3 933	1.8%	3 587	2.2%	+ 48.8%
Switzerland	5 413	1.9%	4 393	1.6%	4 187	1.9%	4 714	2.1%	2 805	1.7%	- 3.4%
Namibia	3 442	1.2%	7 706	2.8%	1 445	0.6%	1 996	0.9%	2 613	1.6%	+++
Japan	791	0.3%	997	0.4%	789	0.4%	1 478	0.7%	2 345	1.4%	+++
Canada	1 343	0.5%	2 518	0.9%	1 550	0.7%	1 816	0.8%	1 373	0.8%	+ 24.9%
Serbia	1 134	0.4%	1 062	0.4%	931	0.4%	985	0.4%	768	0.5%	+ 31.5%
Botswana	3 119	1.1%	4 950	1.8%	788	0.4%	331	0.1%	740	0.4%	+++
Norway	153	0.1%	125	0.0%	335	0.1%	546	0.2%	437	0.3%	+ 33.6%
Chile	356	0.1%	392	0.1%	168	0.1%	238	0.1%	289	0.2%	+++
China	30	0.0%	26	0.0%	0	0.0%	22	0.0%	166	0.1%	+++
Other Destinations	415	0.1%	457	0.2%	357	0.2%	705	0.3%	320	0.2%	
<b>Total (without UK)</b>	<b>278 748</b>		<b>273 202</b>		<b>223 660</b>		<b>221 420</b>		<b>165 974</b>		
% change			- 2%		- 18%		- 1%		+ 16.6%		

## AB Sığır Eti Yağları İthalatı:

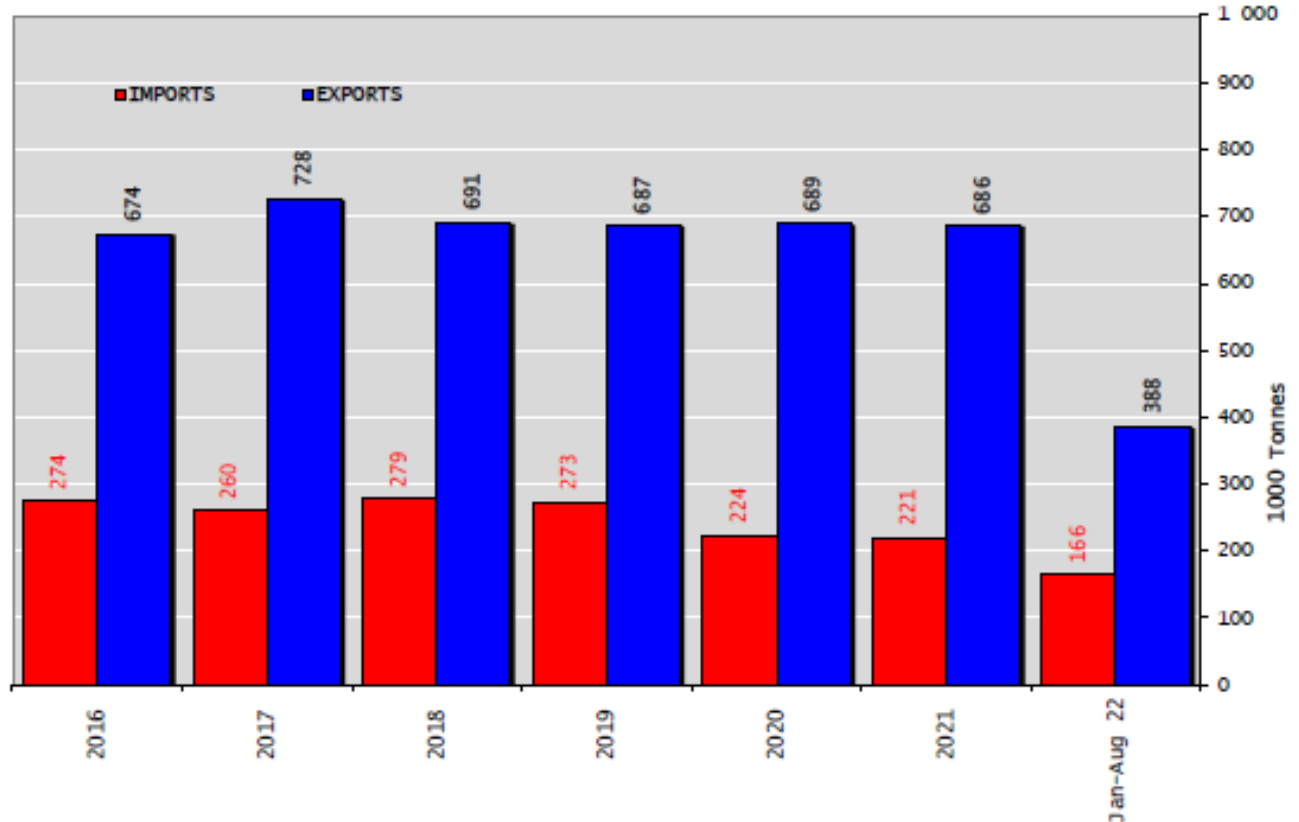
Origins	2020		2021		Jan to Jul 2022		Compared to Jan to Jul 2021
	Tons	% Extra EU	Tons	% Extra EU	Tons	% Extra EU	
Australia	-	0.0%	12	0.0%	0	0.0%	-100.0%
Brazil	-	0.0%	0	0.0%	0	0.0%	+++
Canada	-	0.0%	-	0.0%	0	0.0%	
Extra-EU	11 206	100.0%	73 529	100.0%	28 701	100.0%	-46.2%
Iceland	14	0.1%	27	0.0%	15	0.1%	+72.5%
Indonesia	-	0.0%	-	0.0%	-	0.0%	
Israel	111	1.0%	469	0.6%	242	0.8%	+++
Japan	0	0.0%	1	0.0%	1	0.0%	+++
Morocco	-	0.0%	-	0.0%	0	0.0%	
New Zealand	30	0.3%	14	0.0%	14	0.0%	
Norway	61	0.5%	158	0.2%	-	0.0%	-100.0%
Other Destinations	215	-1.9%	681	-0.9%	272	-0.9%	+34.7%
Extra-EU	11 206		73 529		28 701		-46.2%
% Change				+556.2%			

## AB Sığır Eti ve Canlı Hayvan İthalatları



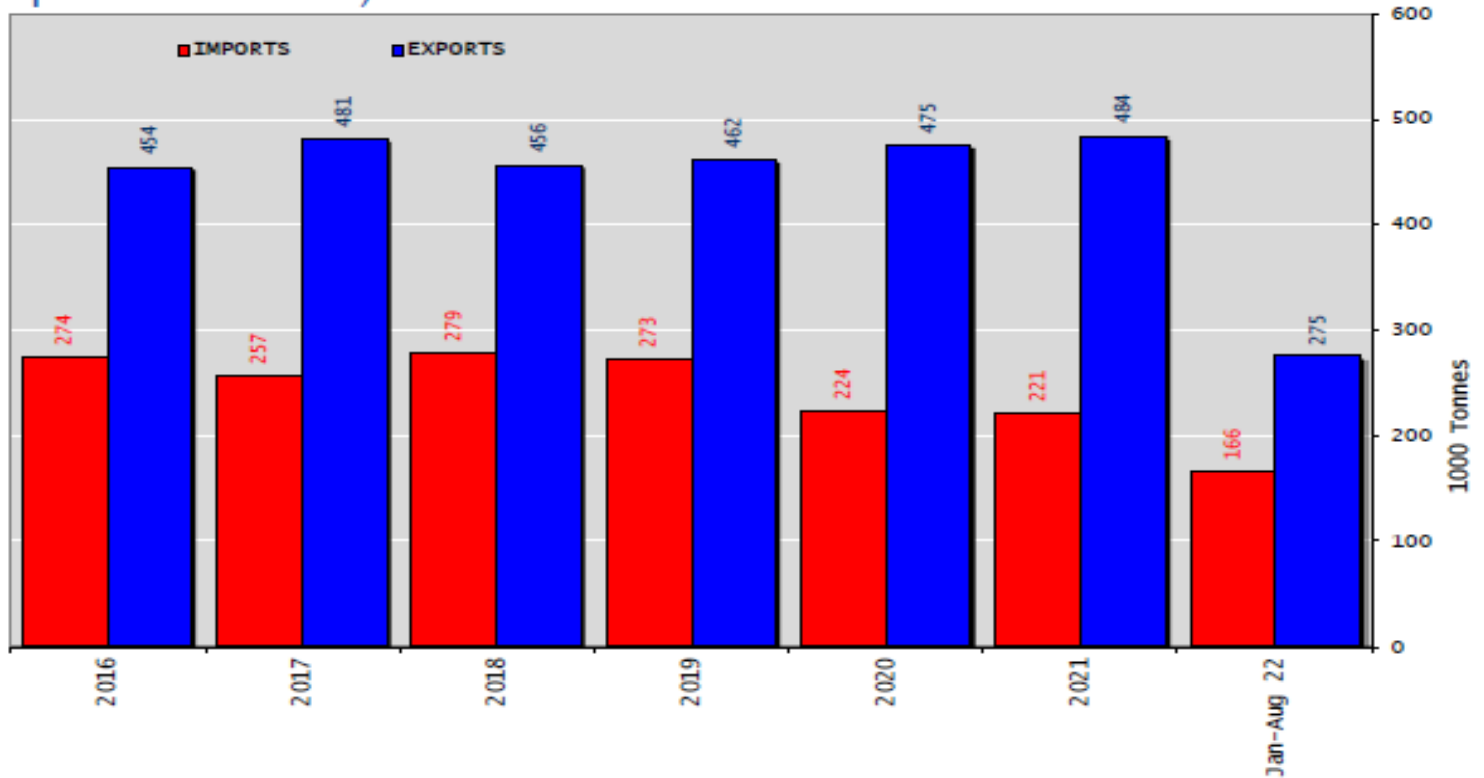
## Sığır eti ve canlı hayvan ticaret dengesi (Birleşik Krallık hariç)

Trade Balance of Beef Products and Live Animals (without UK)



## Sığır eti ürünleri ticaret dengesi (canlı hayvan ve yağlar hariç) (Birleşik Krallık hariç)

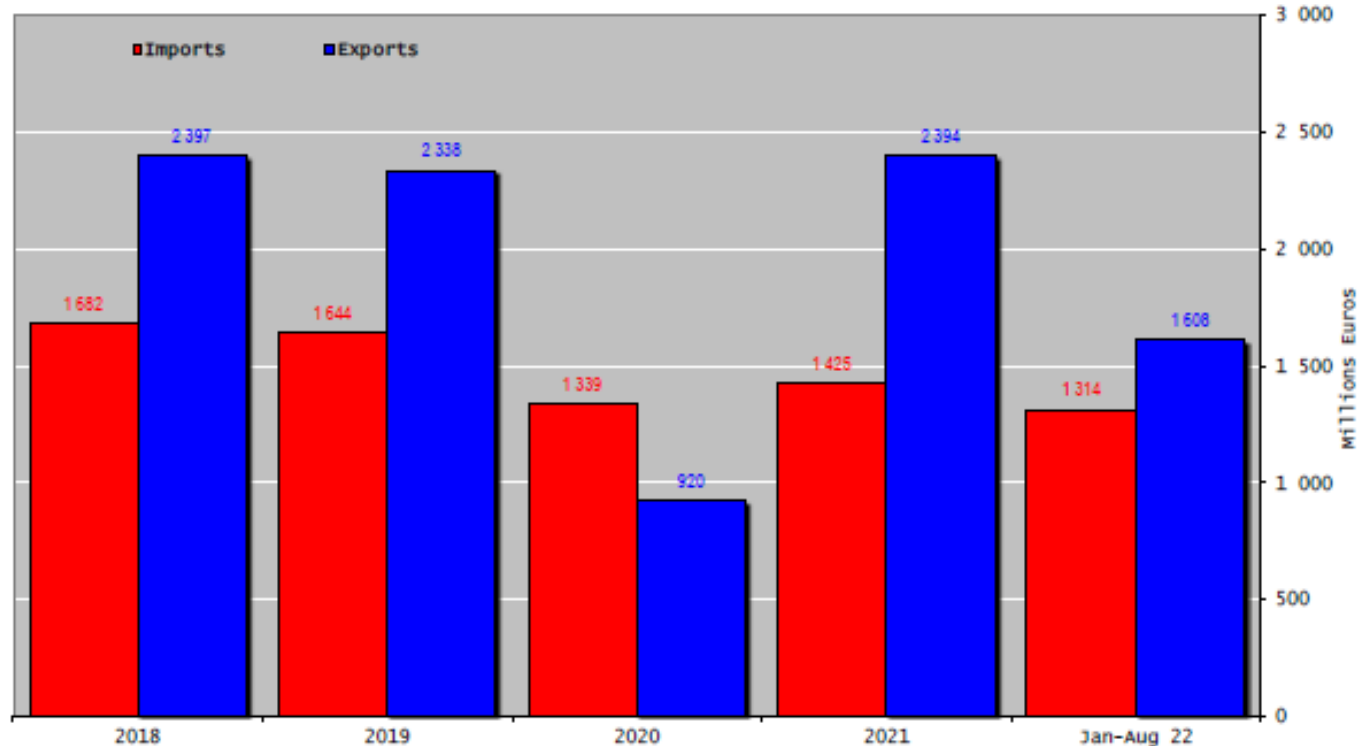
Trade Balance of Beef Products (not including Fats)  
(Except Live Animals) without UK



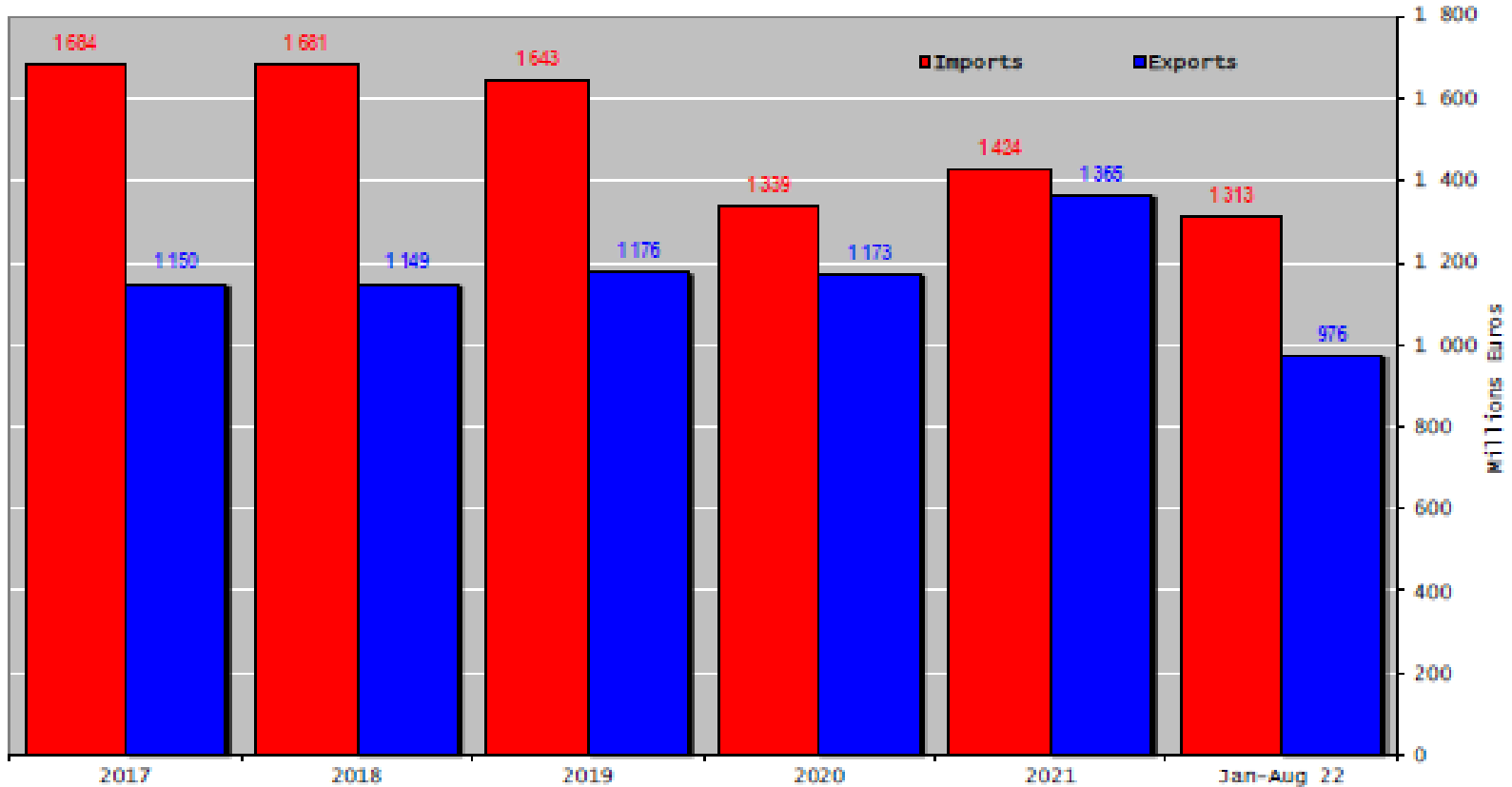


## Sığır eti ürünleri ve canlı hayvan ticaret dengesi (Birleşik Krallık hariç)

Trade Balance of Beef Products and Live Animals (without UK)



## Sığır eti ürünleri ticaret dengesi – yağlar ve canlı hayvan hariç (Birleşik Krallık hariç)



# YÜKSEK KALİTE SİĞİR ETİ İTHALAT KOTALARI



European

## High Quality Beef Import Quotas

Quota ergasmes

Regulation (EU) No 481/2012

8UR

	2020-Q3	2020-Q4	2021-Q1	2021-Q2	TOTAL
Period 2020-2021	6 652	6 542	5 472	5 503	24 169
Available	6 625	6 625	5 500	5 500	24 250
Use	100.00%	98.75%	99.49%	100.00%	99.67%
Available after transfer	6 625	6 598	5 583	5 528	
	100.00%	99.16%	98.02%	99.55%	

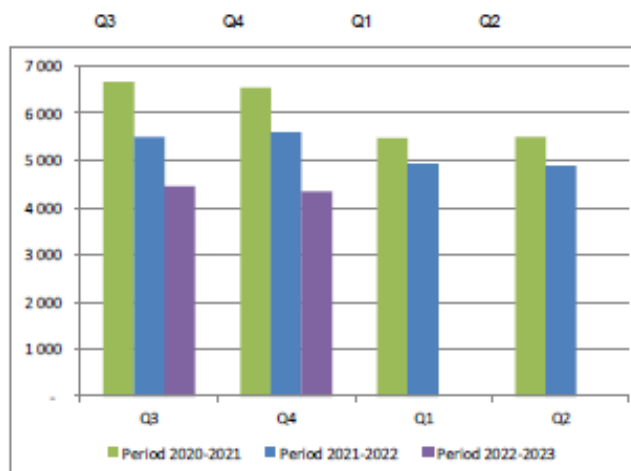
  

	2021-Q3	2021-Q4	2022-Q1	2022-Q2	TOTAL
Period 2021-2022	5 502	5 587	4 938	4 887	20 914
Available	5 500	5 500	4 900	4 900	20 800
Use	100.00%	100.00%	100.00%	99.73%	100.55%
Available after transfer	5 500	5 498	4 813	4 862	
	100.00%	100.00%	100.00%	100.00%	

	2022-Q3	2022-Q4*	2023-Q1	2023-Q2	TOTAL
Period 2022-2023	4 443	4 351			8 794
Available	4 900	4 900			9 800
Use	90.67%	88.81%			89.74%
Available after transfer	4 900	4 900			
	90.67%	88.81%			

\* Until 13.10.2022



# YÜKSEK KALİTE SİĞİR ETİ İTHALAT KOTALARI



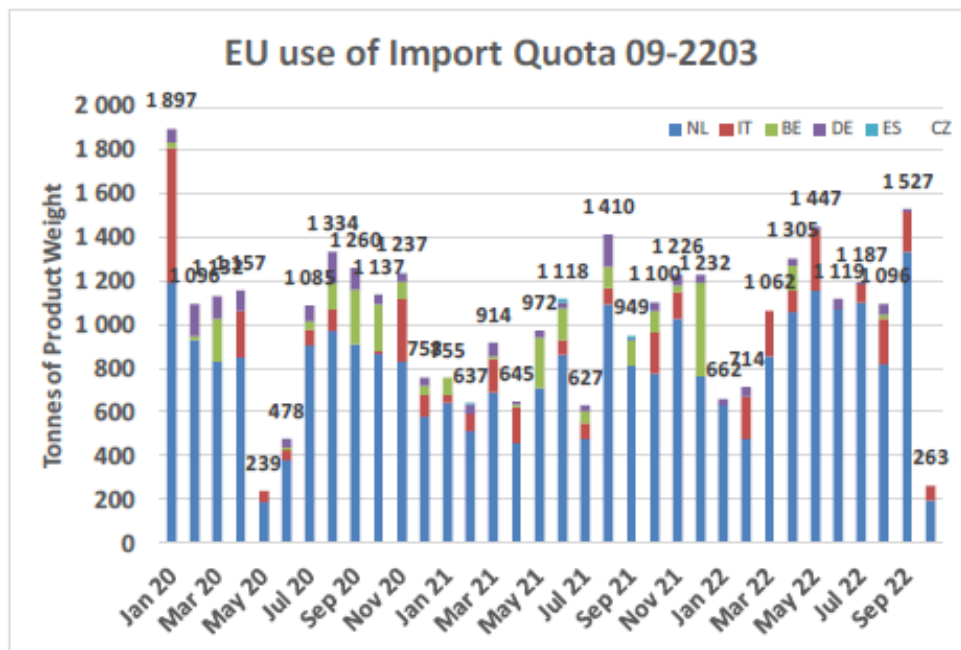
European Commission

## High Quality Beef Import Quotas

Origin	GATT 2021-2022				
	2021-Q3	2021-Q4	2022-Q1	2022-Q2	Total
NL	2 384	2 564	1 959	3 285	10 193
IT	151	313	405	380	1 249
BE	262	555	-	117	935
DE	173	122	74	89	458
ES	15	-	-	-	15
CZ	-	4	-	-	4
<b>Total import within Quota</b>	<b>2 985</b>	<b>3 559</b>	<b>2 439</b>	<b>3 871</b>	<b>12 854</b>
Available	5 750	5 750	6 350	6 350	24 200
Use	51.92%	61.90%	38.41%	60.96%	53.12%
After transfer	5 750	8 515	8 541	10 261	
Use	51.92%	41.80%	28.55%	37.72%	

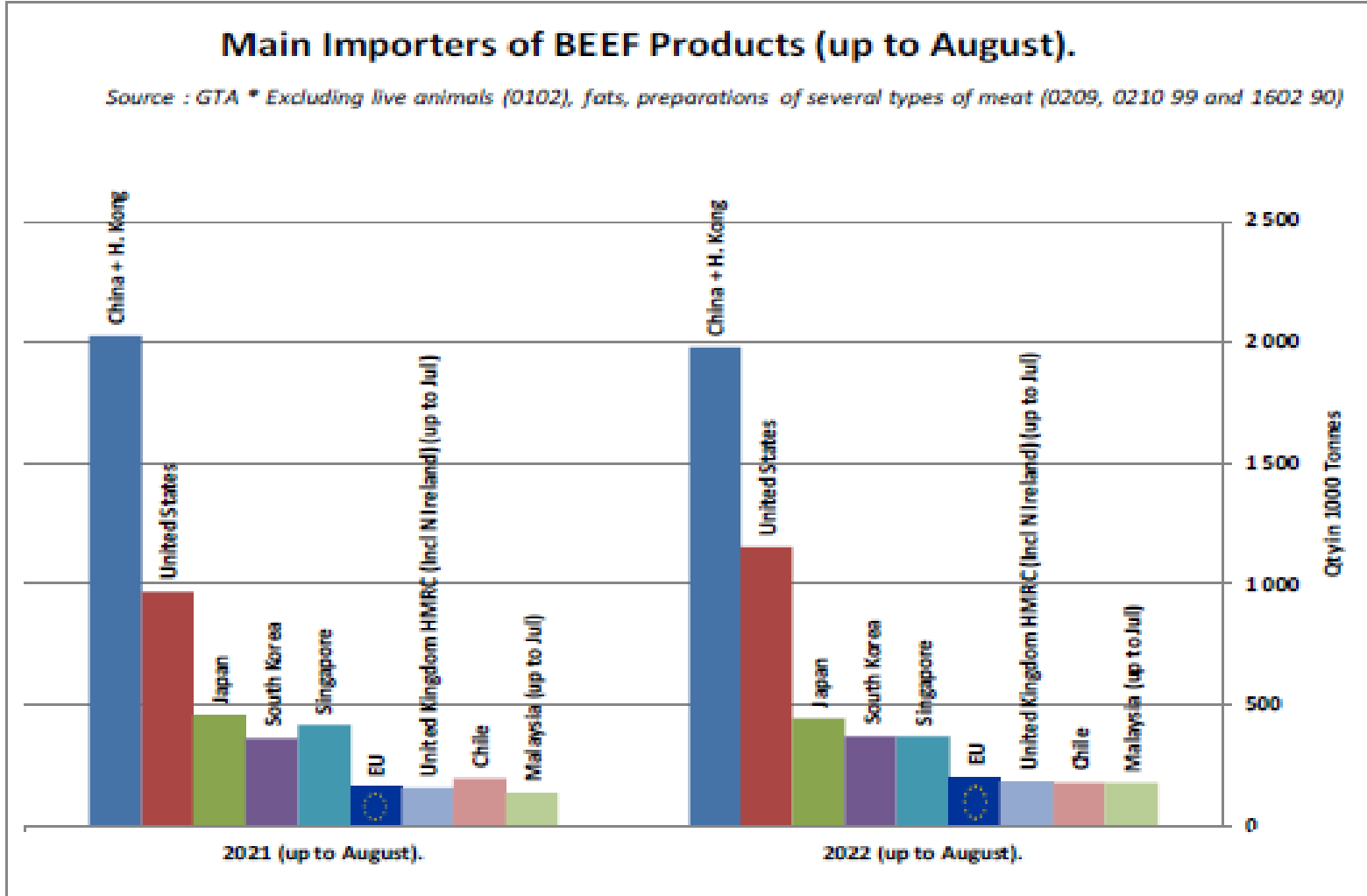
  

Origin	GATT 2022-2023				
	2022-Q3	2022-Q4	2023-Q1	2023-Q2	Total
NL	3 255	191			3 446
IT	473	72			545
BE	18	-			18
DE	64	-			64
ES	-	-			-
CZ	-	-			-
<b>Total import within Quota</b>	<b>3 810</b>	<b>263</b>			<b>4 073</b>
Available	6 350	6 350	6 350	6 350	25 400
Use	59.99%	4.14%			16.03%
After transfer		8 890			
Use		2.96%			



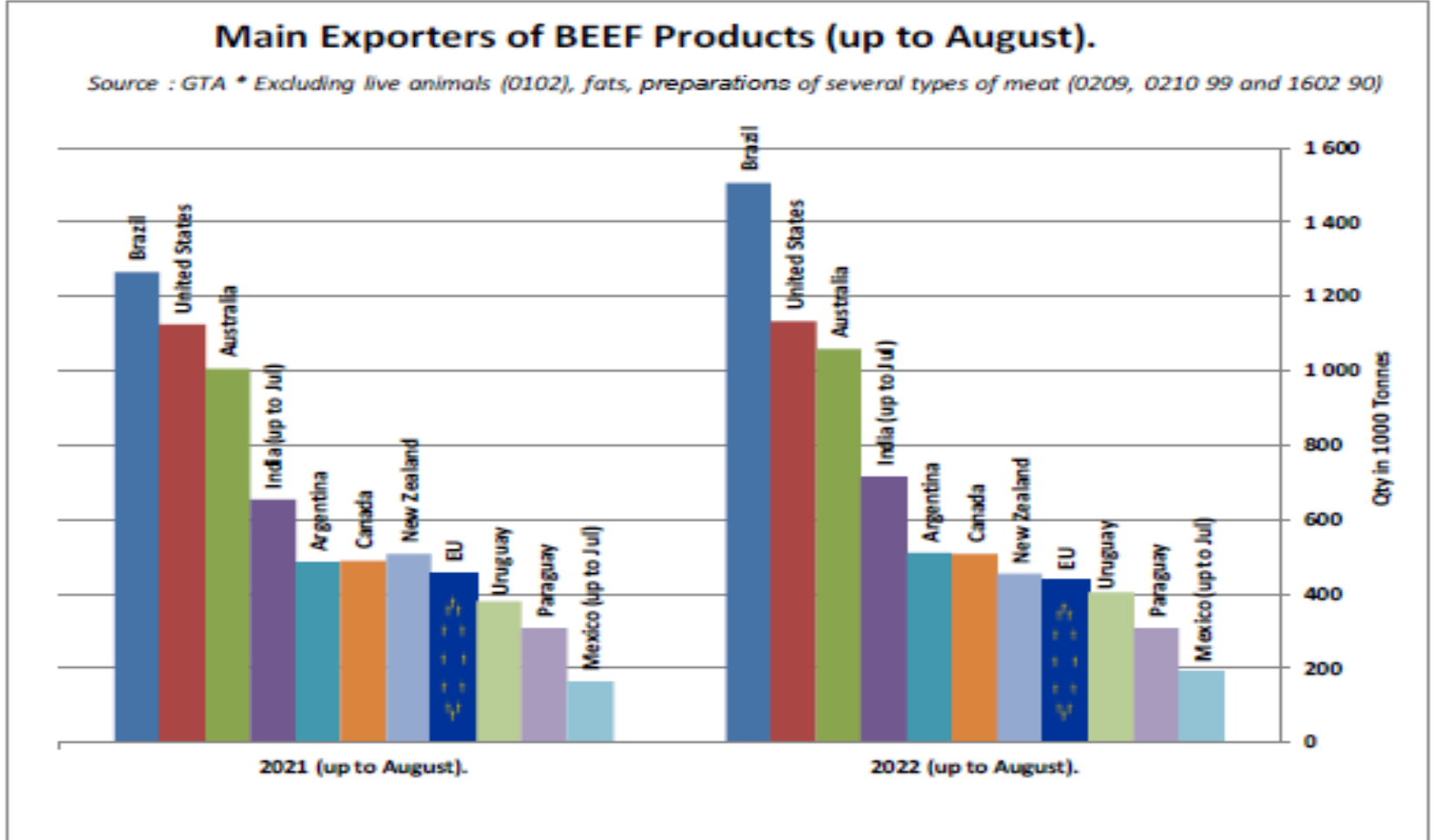
ber 2022

### SIĞIR ETİ ÜRÜNLERİNİN NET İTHALATÇILARI (AĞUSTOS AYINA KADAR)





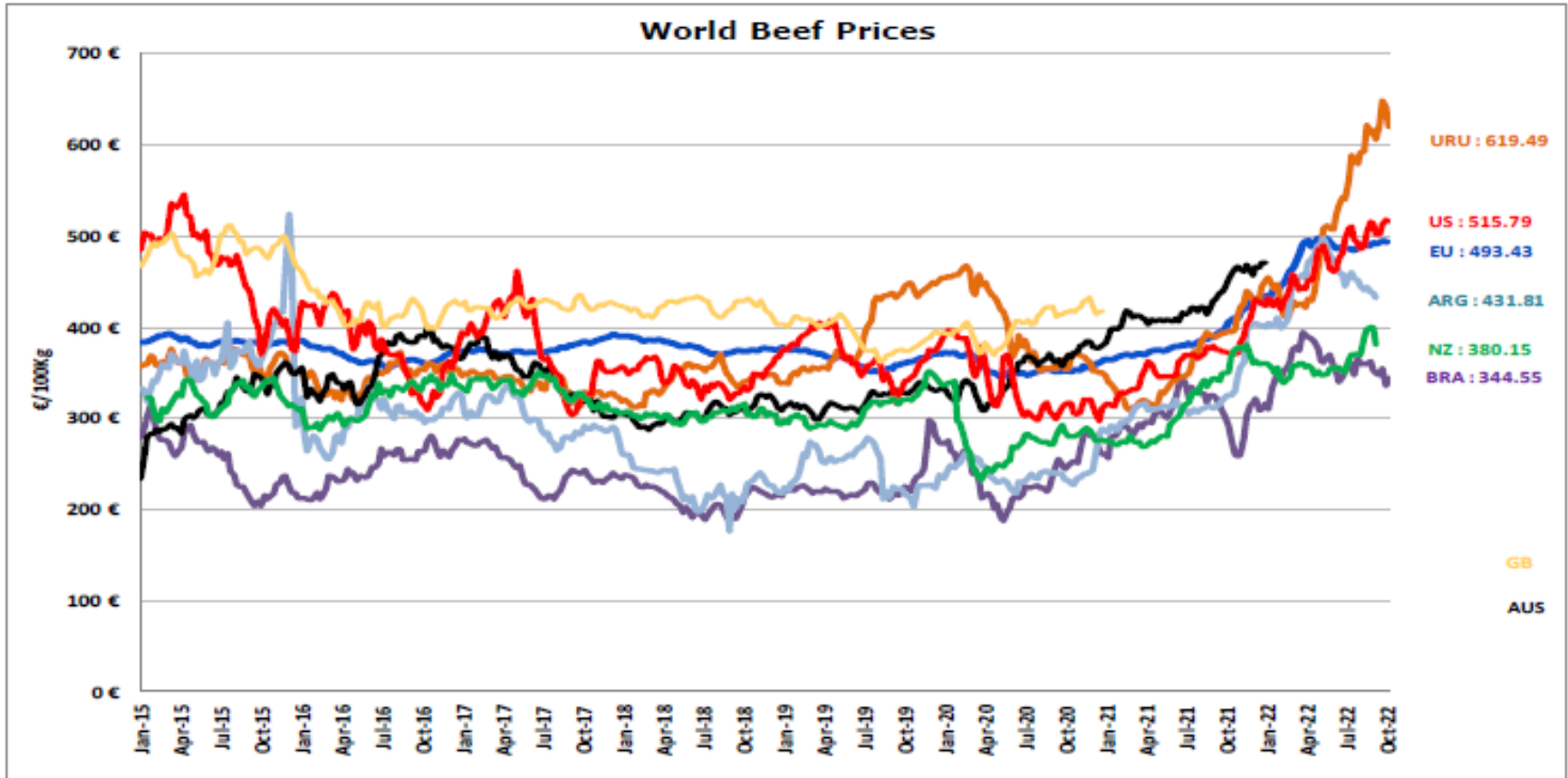
## SIĞIR ETİ ÜRÜNLERİNİN NET İHRACATÇILARI (AĞUSTOS AYINA KADAR)



# DÜNYA SIĞIR ETİ PAZARI



# Dünya Sığır Fiyatları AB, ABD, AVUSTURYA, YENİ ZELANDA



- ECB <http://sdw.ecb.europa.eu/browse.do?node=2018794>
- US <https://www.marketnews.usda.gov/mnp/lx-home>
- AUS <http://statistics.mia.com.au/Report/RunReport/ae39d4ac-74e4-4c36-93bd-982a044d9760>
- UY <http://www.inac.gub.uy/innovaportal/v/11034/10/innova.front/indicadores-y-precios>
- ARG [http://www.abc-consorcio.com.ar/Estadisticas/detalle/117/precios\\_comparativos\\_del\\_novillo.html](http://www.abc-consorcio.com.ar/Estadisticas/detalle/117/precios_comparativos_del_novillo.html)
- BR <http://www.pecuaria.com.br/cotacoes.php>
- NZ [http://www.abc-consorcio.com.ar/Estadisticas/detalle/117/precios\\_comparativos\\_del\\_novillo.html](http://www.abc-consorcio.com.ar/Estadisticas/detalle/117/precios_comparativos_del_novillo.html)

er 2022





**Daha fazla bilgi için:**

**[https://ec.europa.eu/agriculture/market-observatory/meat\\_en](https://ec.europa.eu/agriculture/market-observatory/meat_en)**

**Ve Agri-FOOD Veri Portalı:**

**<http://agridata.ec.europa.eu>**