



# AB SIĞIR VE DANA ETİ PAZAR DURUMU

**19 Ekim 2023**

# HAYVAN VARLIĞI

## ARALIK ARAŞTIRMASI



# AB DEĞİŞİMİ

## TOPLAM BÜYÜKBAŞ

Dec	TOTAL LIVESTOCK				%Var 2022 2021	BOVINE < 1 Year				%Var 2022 2021	BOVINE 1-2 Year				%Var 2022 2021	BOVINE > 2 Year				%Var 2022 2021
	1000 Hd	2019	2020	2021		2022	2019	2020	2021		2022	2019	2020	2021		2022	2019	2020	2021	
BE	2 373	2 335	2 310	2 286	-1.1%	722	712	713	694	-2.7%	454	461	454	454	-0.0%	1 188	1 163	1 143	1 138	-0.5%
BG	527	589	611	580	-5.1%	100	112	121	108	-11.0%	58	71	67	70	+3.8%	369	406	423	402	-4.8%
CZ	1 367	1 340	1 359	1 390	+2.3%	411	405	408	407	-0.4%	299	295	296	314	+6.1%	657	640	655	669	+2.2%
DK	1 500	1 500	1 480	1 466	-0.9%	522	524	516	510	-1.2%	280	279	280	281	+0.4%	698	697	684	675	-1.3%
DE	11 640	11 302	11 040	10 997	-0.4%	3 485	3 405	3 355	3 308	-1.4%	2 751	2 639	2 569	2 600	+1.2%	5 403	5 258	5 116	5 089	-0.5%
EE	254	253	251	250	-0.5%	71	72	69	69	+0.4%	50	49	51	49	-3.7%	133	132	131	132	+0.3%
IE	6 560	6 529	6 649	6 552	-1.5%	1 962	2 057	2 108	1 995	-5.3%	1 741	1 708	1 775	1 810	+2.0%	2 856	2 765	2 766	2 746	-0.7%
EL	530	632	614	582	-5.3%	157	162	176	156	-11.5%	91	145	114	107	-6.2%	283	325	324	319	-1.6%
ES	6 600	6 636	6 576	6 455	-1.8%	2 529	2 541	2 319	2 489	+7.3%	857	853	1 016	785	-22.8%	3 214	3 242	3 240	3 181	-1.8%
FR	18 173	17 816	17 330	16 986	-2.0%	5 125	5 119	4 945	4 868	-1.6%	3 183	3 063	3 021	2 992	-1.0%	9 865	9 634	9 364	9 127	-2.5%
HR	420	423	428	422	-1.4%	151	146	156	149	-4.5%	107	111	107	112	+4.7%	162	166	165	161	-2.4%
IT	6 377	6 400	6 280	6 049	-3.7%	1 759	1 774	1 722	1 563	-9.2%	1 588	1 595	1 562	1 520	-2.7%	3 030	3 031	2 997	2 966	-1.0%
CY	74	83	85	81	-3.7%	25	27	27	25	-7.4%	12	14	15	15	-2.8%	38	42	43	42	-1.8%
LV	395	399	393	391	-0.5%	108	112	107	107	+0.4%	65	65	68	66	-3.3%	222	222	219	219	-0.1%
LT	635	630	629	642	+2.1%	167	169	166	173	+4.4%	132	129	135	130	-3.6%	336	332	328	339	+3.3%
LU	192	191	187	186	-0.6%	50	50	49	48	-2.1%	41	41	40	41	+0.1%	101	100	98	98	-0.1%
HU	909	933	910	894	-1.7%	258	266	269	258	-4.2%	193	195	153	159	+3.6%	458	472	487	477	-2.1%
MT	14	14	14	14	+1.3%	4	4	4	4	+1.6%	3	3	3	3	-3.3%	7	7	7	7	+3.3%
NL	3 721	3 691	3 705	3 751	+1.2%	1 528	1 510	1 519	1 536	+1.1%	440	465	482	496	+2.9%	1 752	1 716	1 704	1 719	+0.9%
AT	1 880	1 855	1 870	1 861	-0.5%	605	599	611	597	-2.3%	426	414	421	430	+2.1%	848	842	838	834	-0.5%
PL	6 262	6 279	6 379	6 448	+1.1%	1 748	1 735	1 802	1 929	+7.0%	1 757	1 800	1 915	1 699	-11.3%	2 758	2 744	2 662	2 821	+6.0%
PT	1 675	1 691	1 641	1 579	-3.7%	531	526	528	516	-2.2%	240	257	214	201	-6.2%	903	909	899	862	-4.0%
RO	1 923	1 875	1 827	1 834	+0.4%	400	369	347	347	-0.1%	223	225	222	228	+2.8%	1 300	1 281	1 258	1 259	+0.1%
SI	483	486	483	465	-3.7%	151	153	157	149	-4.8%	136	133	131	130	-0.6%	197	199	195	186	-4.8%
SK	432	442	434	433	-0.2%	122	126	125	124	-0.1%	83	87	82	83	+1.7%	227	229	228	225	-0.9%
FI	841	835	830	822	-1.0%	287	292	287	283	-1.3%	205	199	205	203	-1.1%	349	344	338	336	-0.6%
SE	1 405	1 391	1 390	1 391	+0.0%	453	464	460	461	+0.2%	339	323	334	333	-0.4%	613	603	596	597	+0.2%
EU	77 161	76 551	75 705	74 808	-1.2%	23 431	23 428	23 065	22 872	-0.8%	15 764	15 621	15 732	15 308	-2.7%	37 966	37 503	36 908	36 627	-0.8%

Source : Estel Neoronox

EU %Var is calculated considering only countries available in 2021 AND 2022



European  
Commission

Dec 1000 Hd	TOTAL COWS				%Var 2022 2021	DAIRY COWS				%Var 2022 2021	OTHER COWS				%Var 2022 2021
	2019	2020	2021	2022		2019	2020	2021	2022		2019	2020	2021	2022	
BE	939	921	917	913	-0.4%	538	538	537	544	+1.2%	401	383	379	370	-2.6%
BG	343	382	397	376	-5.2%	227	242	230	213	-7.6%	116	140	166	163	-1.8%
CZ	570	560	574	579	+0.9%	361	357	362	357	-1.6%	209	203	212	223	+5.2%
DK	645	646	635	627	-1.3%	563	565	559	556	-0.5%	83	80	76	70	-7.9%
DE	4 651	4 548	4 445	4 420	-0.6%	4 012	3 921	3 833	3 810	-0.6%	640	626	612	610	-0.3%
EE	116	116	115	114	-0.4%	85	84	84	84	+0.0%	31	32	31	31	-1.8%
IE	2 383	2 379	2 395	2 372	-1.0%	1 426	1 456	1 505	1 510	+0.3%	957	923	890	862	-3.1%
EL	242	210	213	227	+6.4%	86	90	91	81	-11.8%	156	120	122	147	+20.1%
ES	2 881	2 909	2 900	2 888	-0.4%	813	811	809	810	+0.1%	2 068	2 099	2 091	2 078	-0.6%
FR	7 505	7 379	7 204	7 020	-2.6%	3 491	3 406	3 322	3 231	-2.7%	4 014	3 974	3 882	3 790	-2.4%
HR	142	144	142	138	-2.8%	130	110	102	79	-22.5%	12	34	40	59	+47.5%
IT	2 237	2 243	2 193	2 348	+7.1%	1 876	1 871	1 844	1 865	+1.1%	362	372	349	483	+38.6%
CY	35	40	40	38	-3.5%	35	39	39	38	-1.8%	0	0	1	0	-93.2%
LV	195	196	193	191	-1.0%	138	136	131	128	-2.6%	56	60	61	63	+2.4%
LT	299	295	290	291	+0.4%	241	233	225	224	-0.5%	58	62	65	67	+3.4%
LU	79	78	78	77	-0.5%	54	54	55	55	+1.4%	25	24	23	22	-4.9%
HU	412	414	423	421	-0.4%	243	247	281	278	-1.1%	169	167	142	143	+0.8%
MT	6	6	6	6	+3.4%	6	6	6	6	+4.3%	0	0	0	0	-13.6%
NL	1 633	1 612	1 599	1 614	+0.9%	1 590	1 569	1 554	1 570	+1.0%	43	43	45	44	-2.2%
AT	720	715	712	708	-0.5%	524	525	526	551	+4.6%	195	191	186	158	-15.0%
PL	2 406	2 391	2 289	2 172	-5.1%	2 167	2 126	2 035	2 037	+0.1%	239	266	254	135	-47.0%
PT	731	739	739	715	-3.3%	234	233	230	222	-3.7%	497	507	509	493	-3.1%
RO	1 166	1 145	1 116	1 112	-0.3%	1 139	1 122	1 082	1 076	-0.6%	27	23	34	36	+8.0%
SI	166	167	165	158	-4.8%	101	99	101	93	-7.6%	65	68	65	64	-0.4%
SK	192	192	191	190	-0.6%	126	122	120	117	-2.6%	66	69	71	73	+2.7%
FI	318	316	311	306	-1.4%	259	256	249	243	-2.2%	59	61	62	63	+2.0%
SE	500	499	497	496	-0.1%	301	304	300	298	-0.6%	198	194	197	199	+0.7%
EU	31 513	31 241	30 778	30 519	-0.8%	20 766	20 522	20 213	20 074	-0.7%	10 748	10 718	10 565	10 445	-1.1%

Source: EStat Newcronos

EU %Var is calculated considering only countries available in 2021 AND 2022



European  
Commission

**BAŞ**

**HEADS**

Jan-Jul 23/22

EU

**BOĞA**

Bull

4.4%

**ÖKÜZ**

Bullock

-1.0%

**İNEK**

Cow

-3.9%

**DÜVE**

Heifer

-3.7%

**BUZAĞI**

Calve

-3.5%

**GENÇ  
SİĞİR**

Young cattle

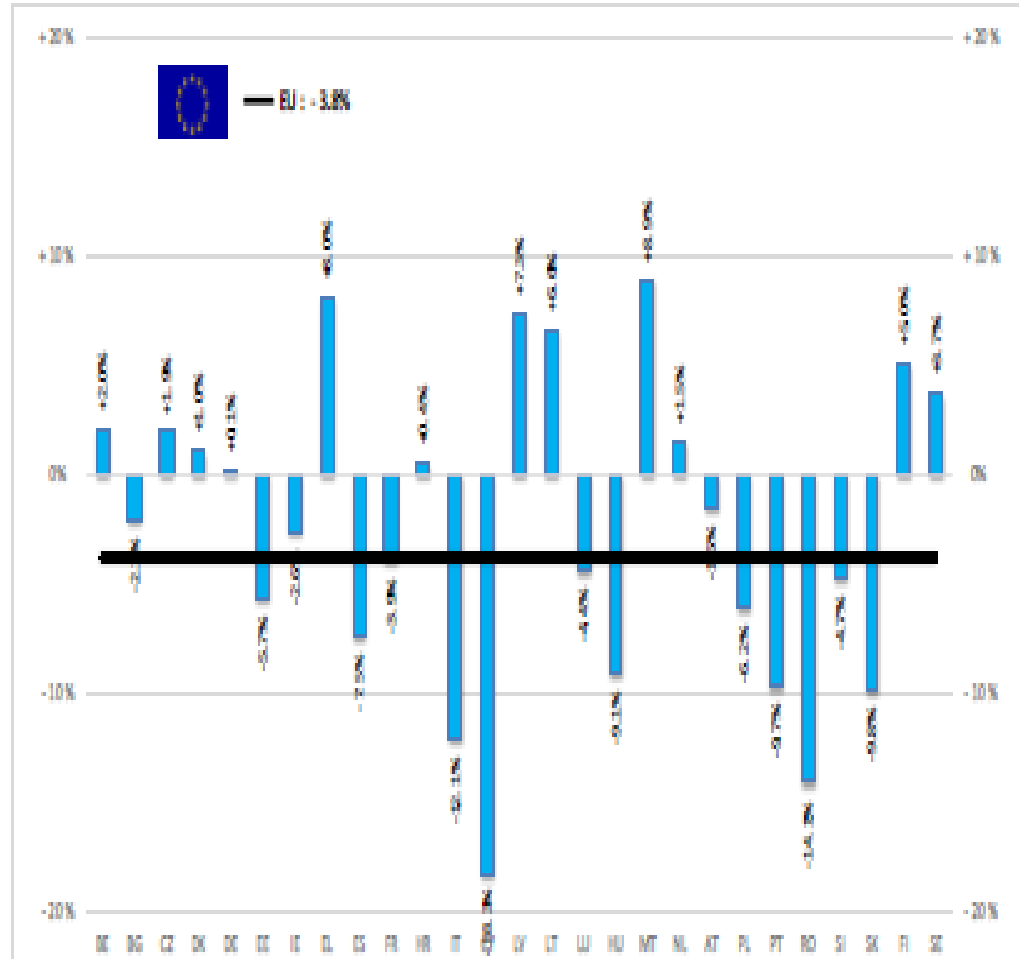
-4.0%

**Büyükbaş  
Hayvan  
Eti**

Meat of  
bovine  
animals

-3.8%

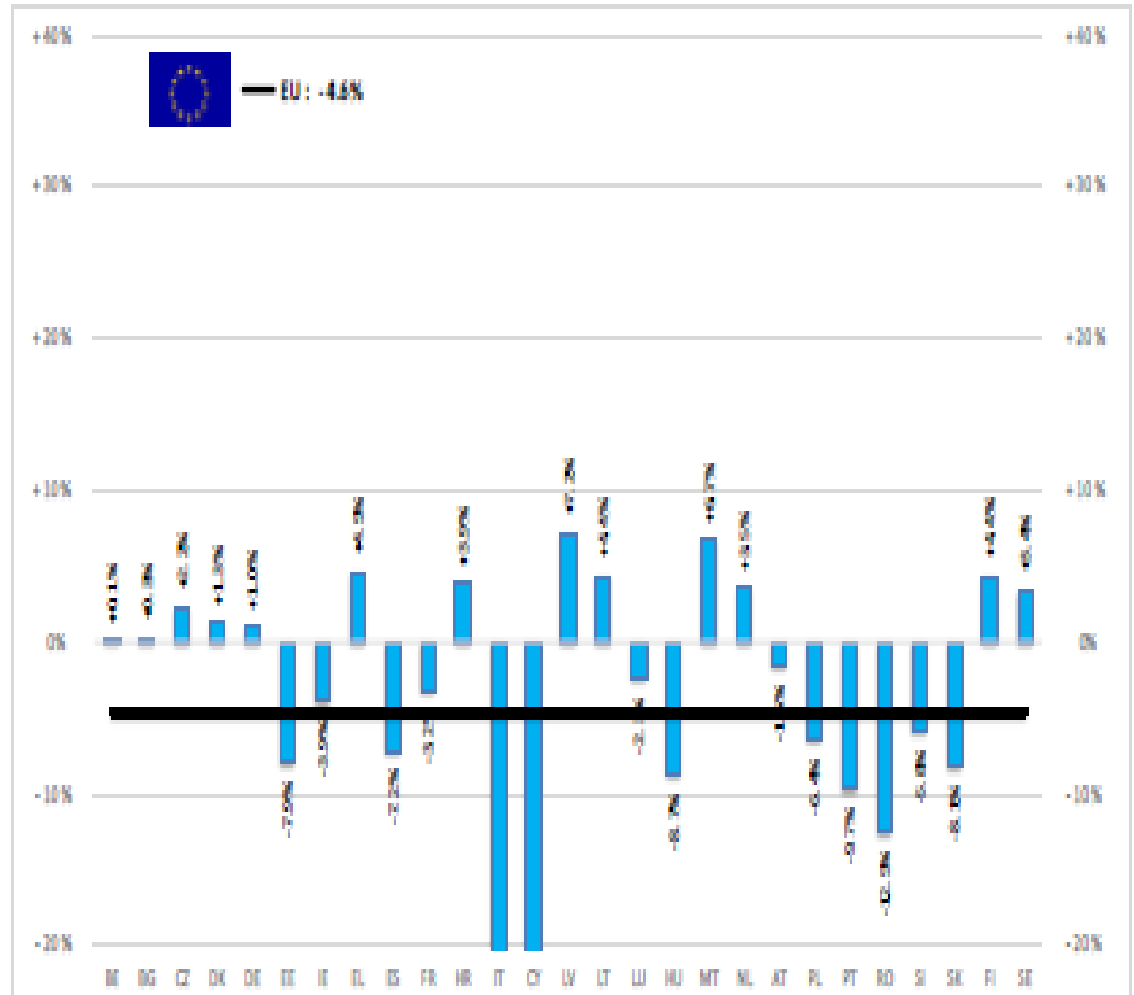
Estimates for last month of period :



Source : EStat - Newcronis

TON	TONNES	Jan-Jul 23/22
		EU
BOĞA	Bull	-4.1%
ÖKÜZ	Bullock	-2.3%
İNEK	Cow	-4.2%
DÜVE	Heifer	-5.9%
BUZAĞI	Calve	-5.7%
GENÇ SİĞİR	Young cattle	-6.0%
Büyükbaş Hayvan Eti	Meat of bovine animals	-4.6%

Estimates for last month of period :

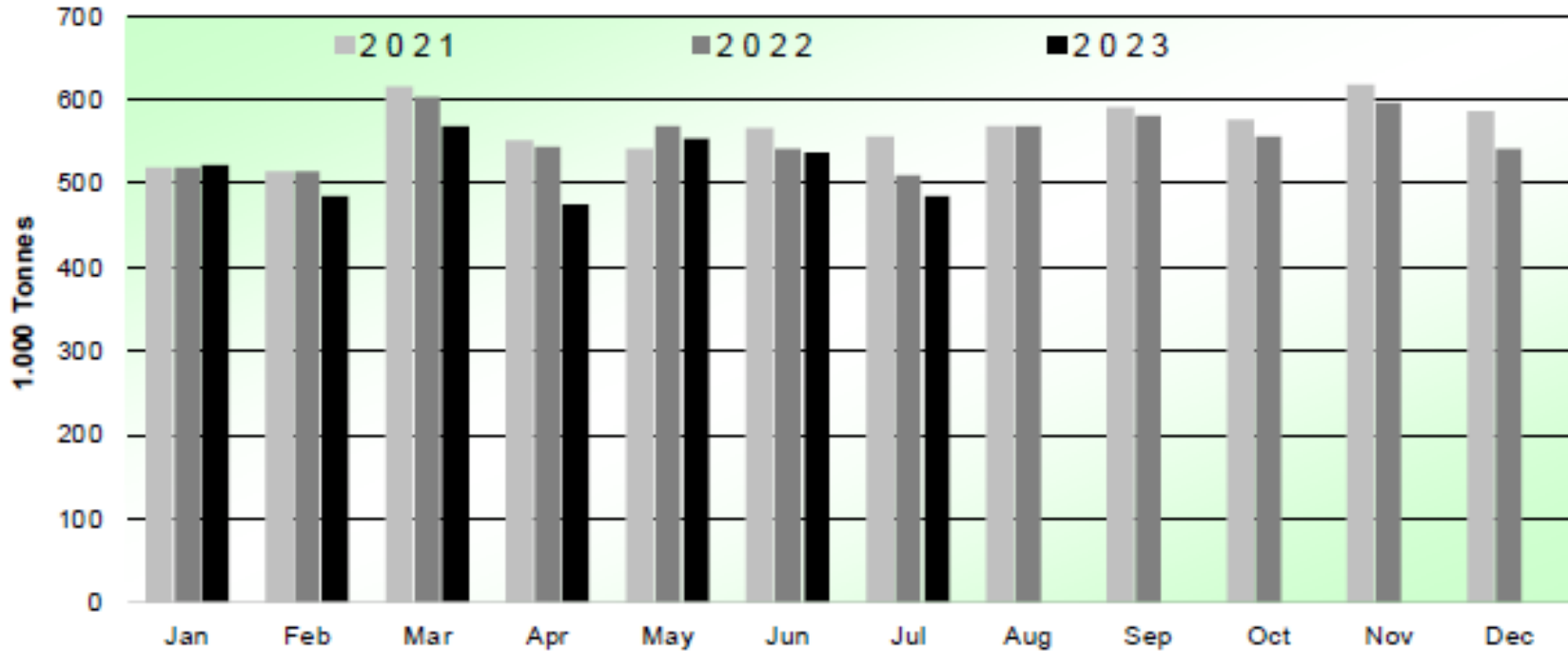


Source : ECStat - Neucronos



# SIĞIR VE DANA ETİ ÜRETİMİ (AB Kesimler – Ton)

## Beef & Veal Production (EU Slaughtering) - Tonnes



Source : EStat-Newcronos

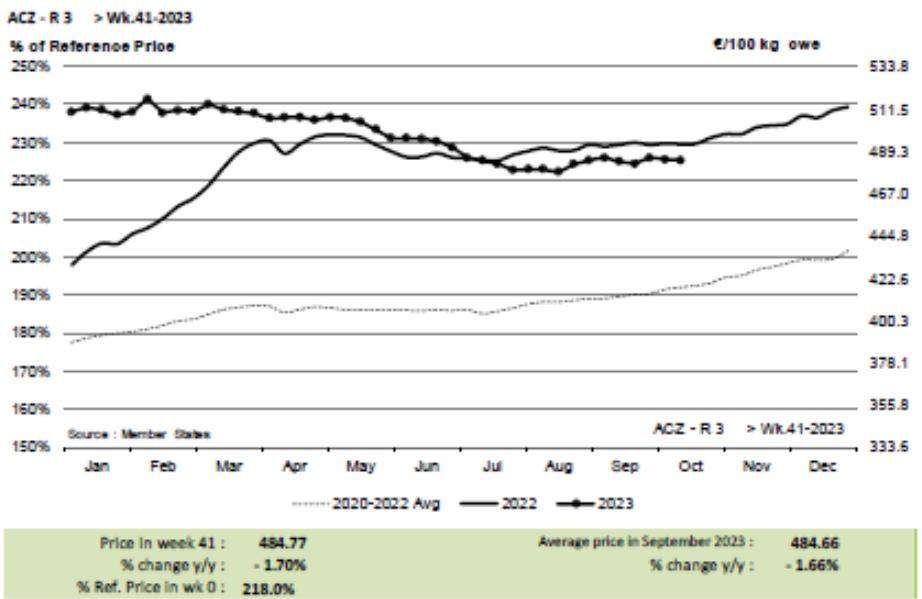
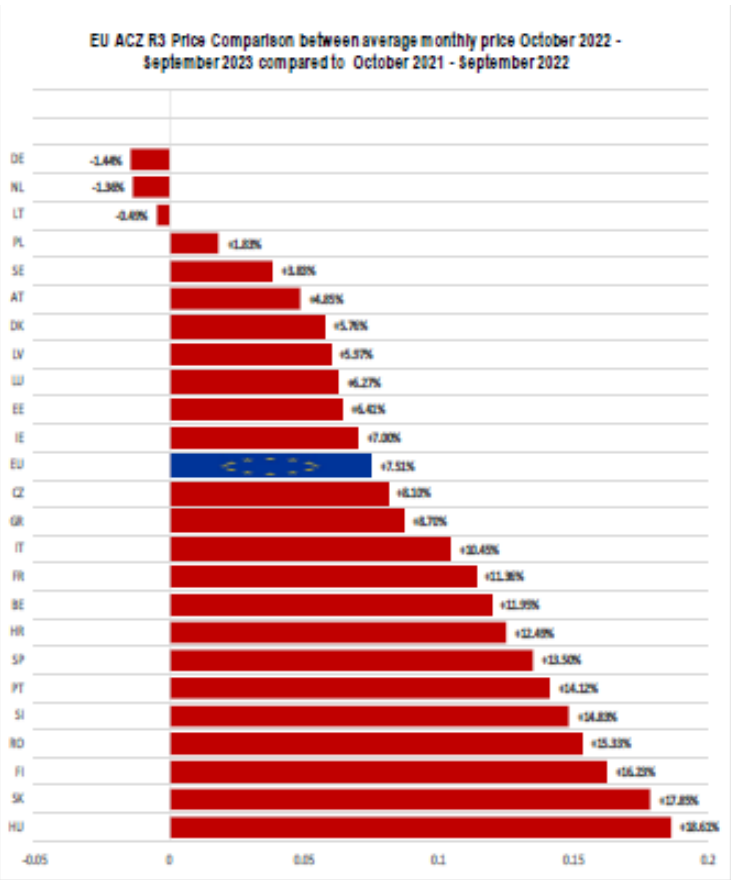


EU Prices week		40	Evolution since last week	Evolution since last month	Evolution since last year
<b>Carcasse</b>	Average A/C/Z -R3	484.5	+ 0.2%	- 0.3%	- 1.8%
	Young Bovines (Z)	497.8	+ 0.5%	+ 0.0%	+ 0.8%
	Young Bulls (A)	482.2	+ 0.3%	- 0.2%	- 2.6%
	Steers (C)	478.2	- 1.1%	- 1.3%	- 1.1%
	Cows (D)	404.8	- 0.5%	- 2.4%	- 6.4%
	Heifers (E)	506.6	+ 0.2%	+ 0.3%	- 0.5%
	Calves slaughtered <8M	598.0	- 0.0%	- 8.3%	- 4.8%
<b>Live Animals</b>	Male Calves Dairy Type	108.3	- 2.4%	- 9.1%	+ 27.6%
	Male Calves Beef Type	241.1	- 1.6%	- 4.5%	+ 6.7%
	Young Store Cattle	3.21	- 1.5%	- 0.1%	+ 2.9%
	Yearling Male Store Cattle	3.56	- 1.1%	+ 1.7%	+ 7.3%
	Yearling Female Store Cattle	2.76	- 1.6%	- 1.7%	+ 0.0%

Sources : MSs notifications (Regulation (EU) 1182/2017 and 1184/2017

# KARKAS FİYATLARI

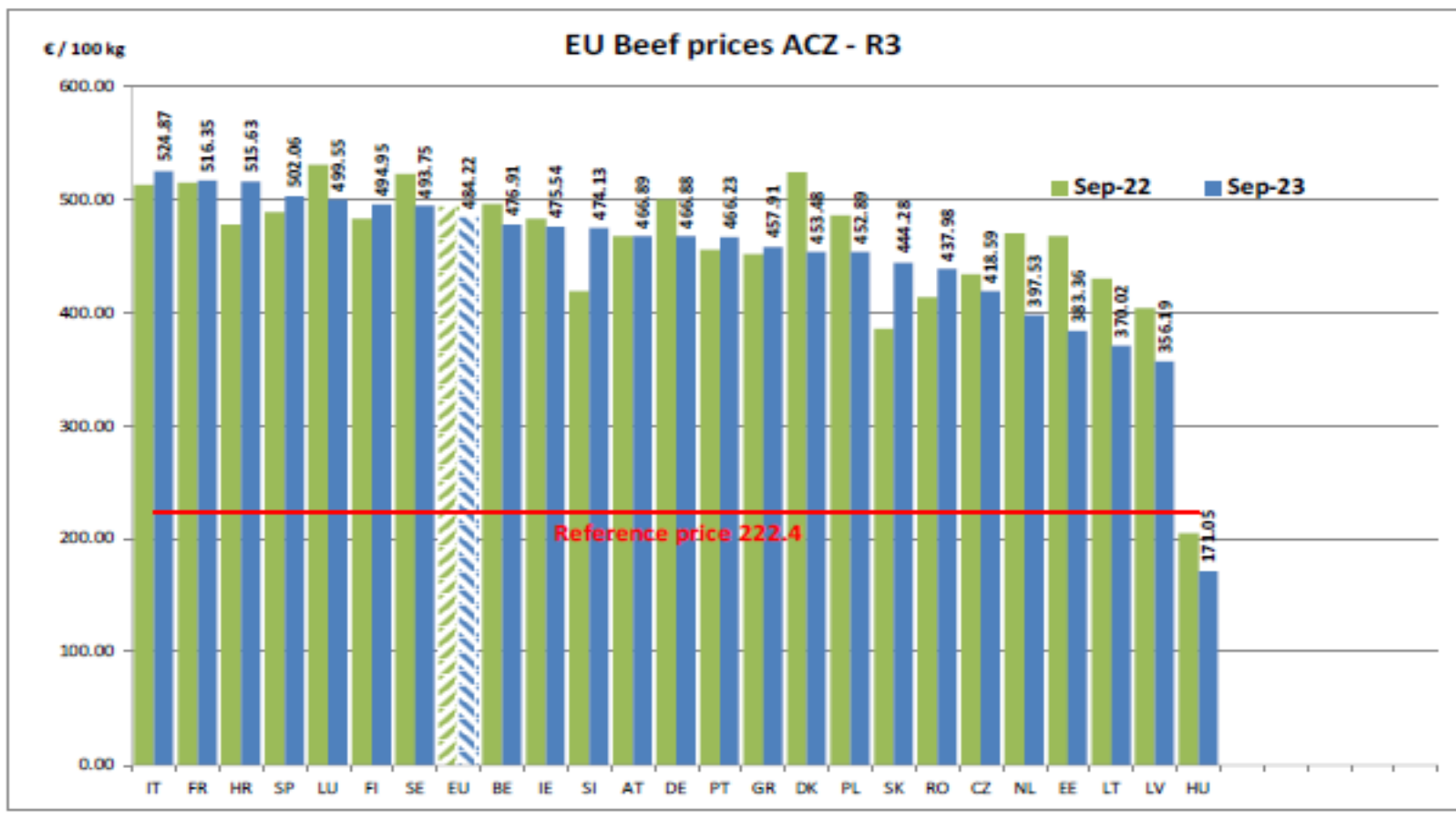
# AB DEĞİŞİM A/C/Z. R3



ber 2023

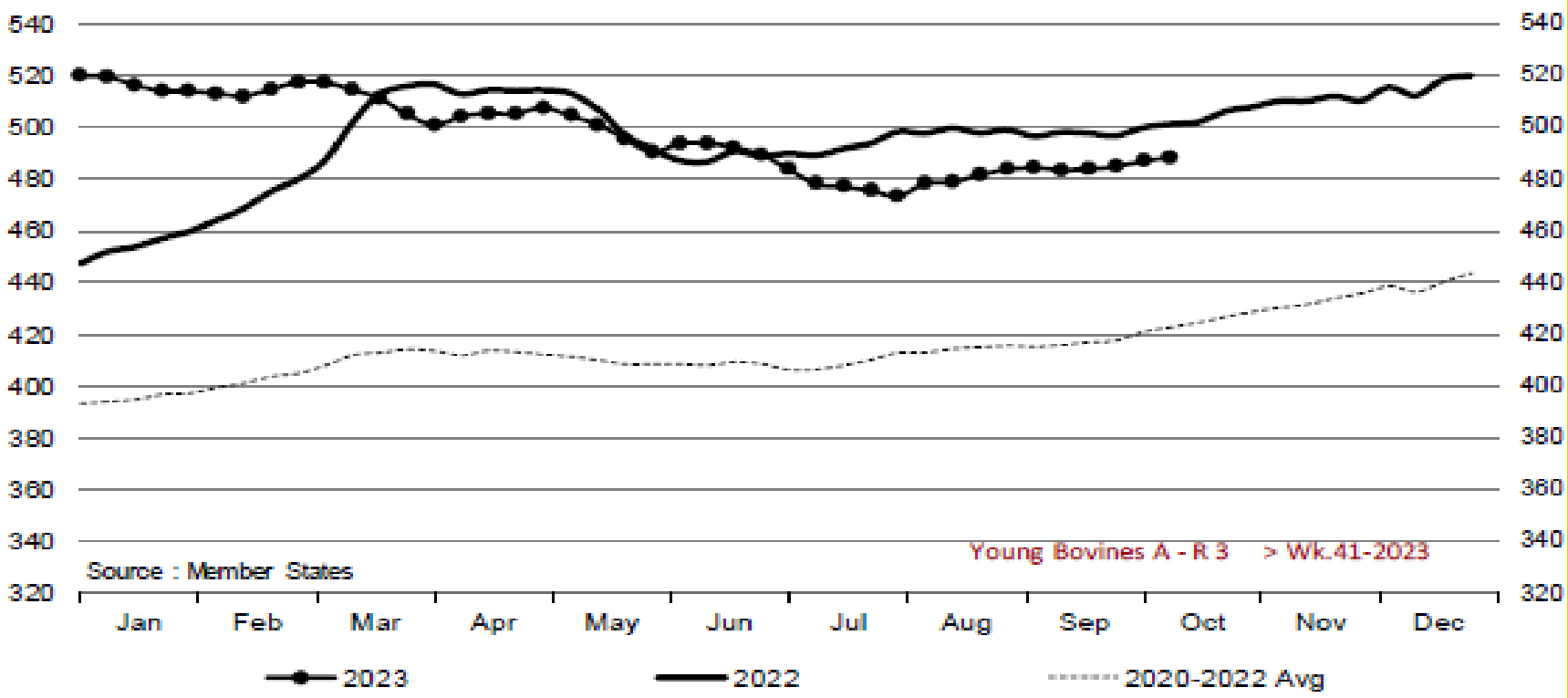








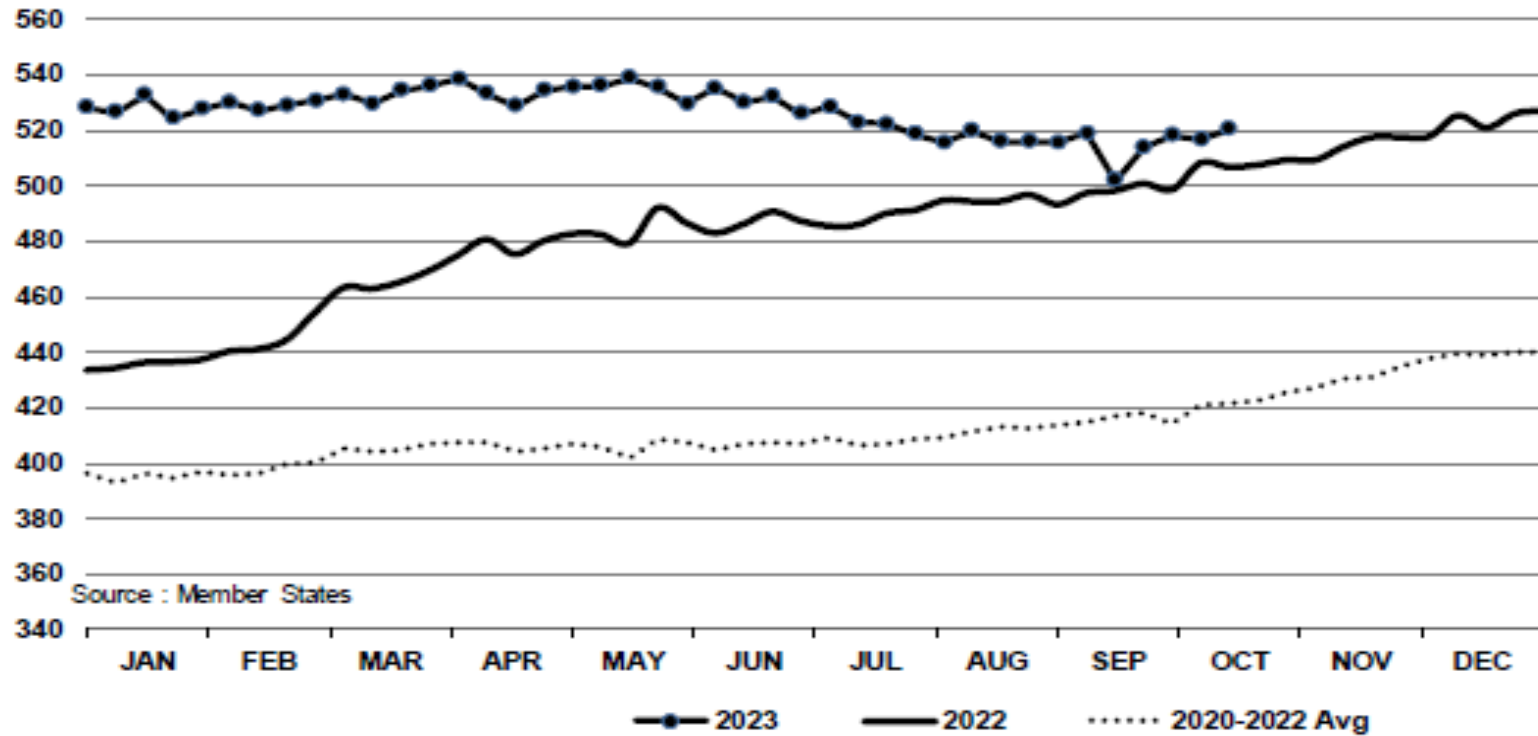
### Young Bovines A - R 3 > Wk.41-2023



Price in week 41 : **488.62**      Average price in September 2023 : **484.22**  
% change y/y : **- 2.5%**      % change y/y : **- 2.7%**

In € / 100 kg

Young Bovines 8-12m Z - R 3 > Wk.41-2023



Price in week 41 : 520.20

14/09/2023

Average price in September 2023 : 513.28

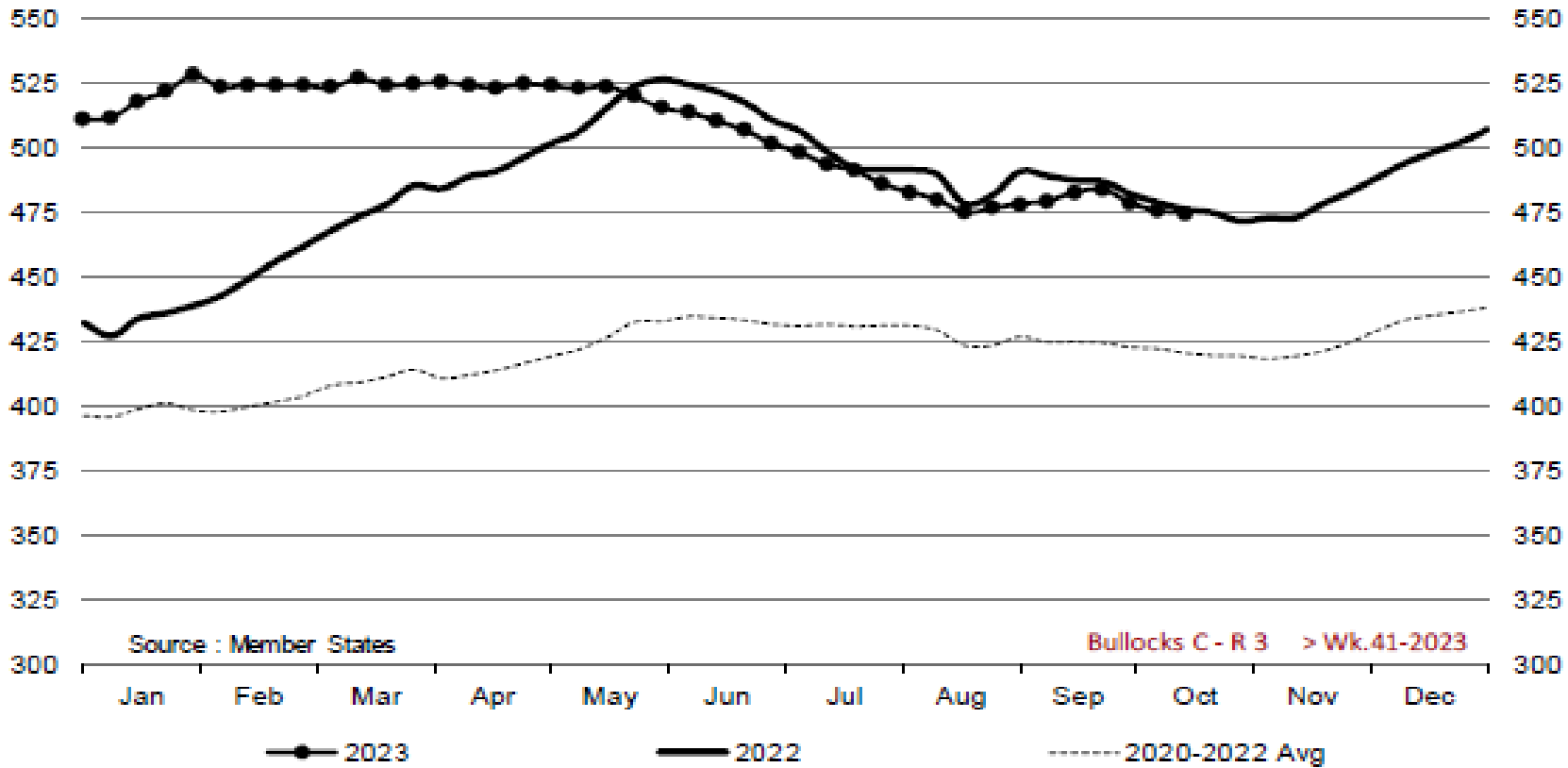
% change y/y : + 2.6%

% change y/y : + 3.0%



# KARKAS FİYATLARI

Bullocks C - R 3 > Wk.41-2023



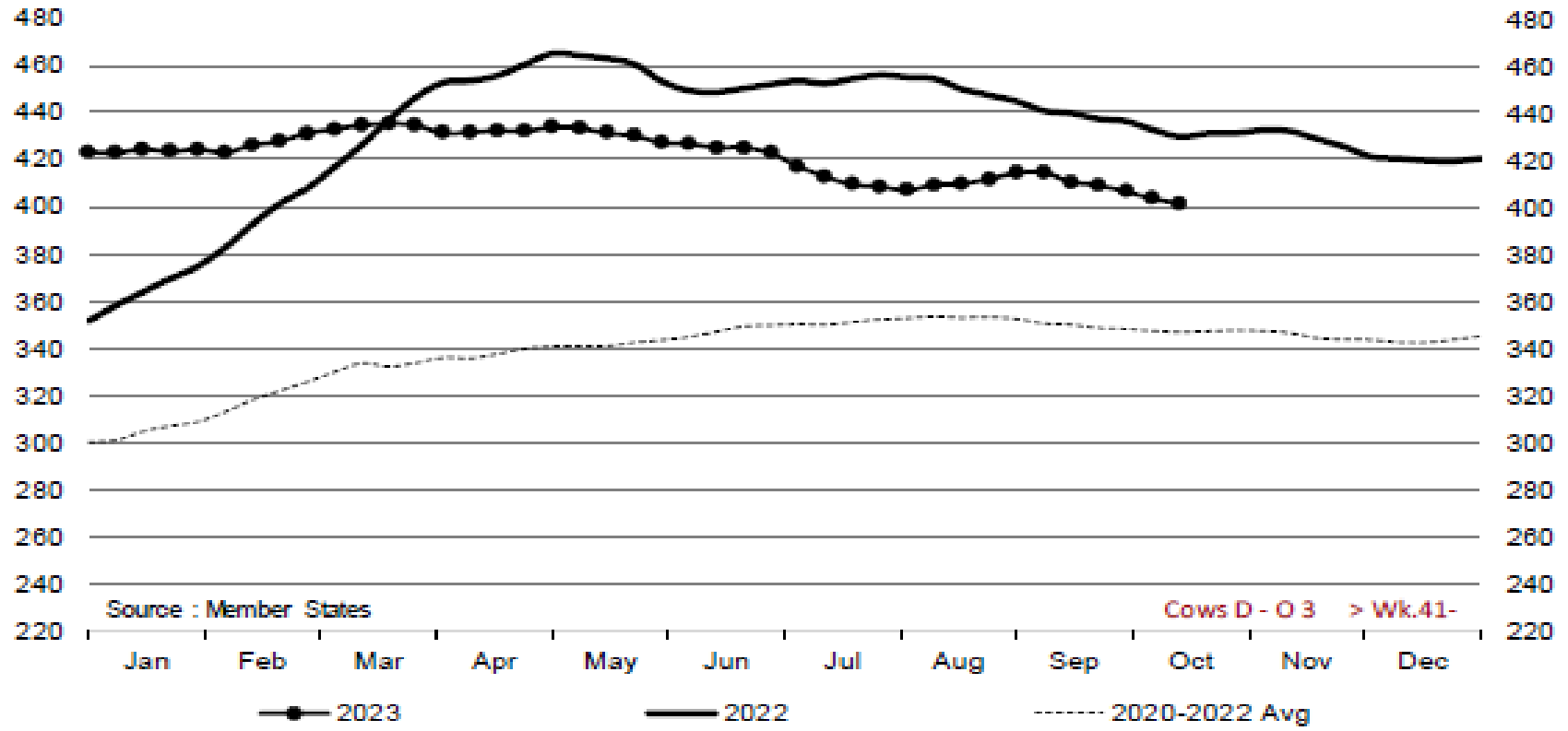
Source : Member States

Bullocks C - R 3 > Wk.41-2023

Price in week 41 :	474.81	Average price in September 2023 :	480.93
% change y/y :	- 0.3%	% change y/y :	- 1.3%



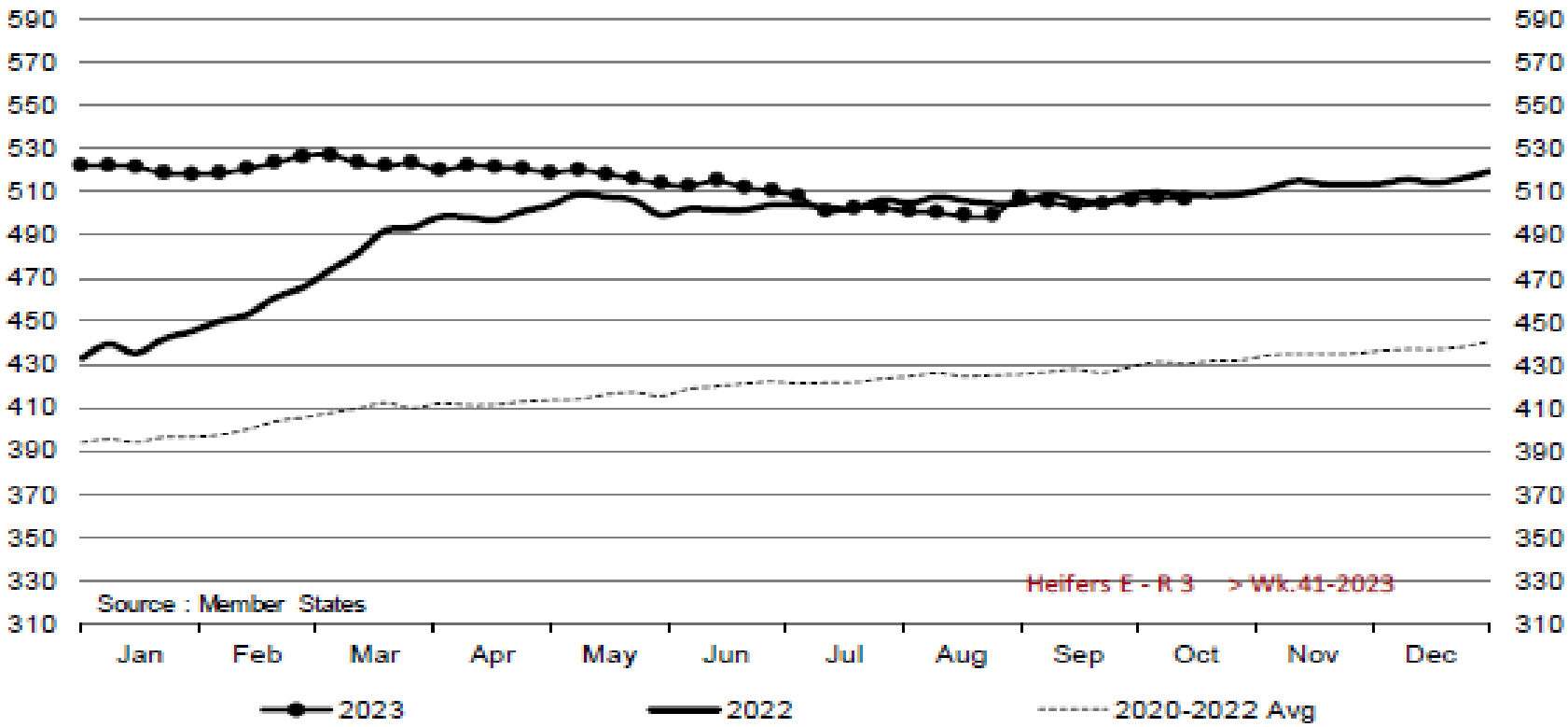
Cows D - O 3 > Wk.41-2023



Price in week 41 : 401.44      Average price in September 2023 : 410.98  
% change y/y : - 6.6%      % change y/y : - 6.5%



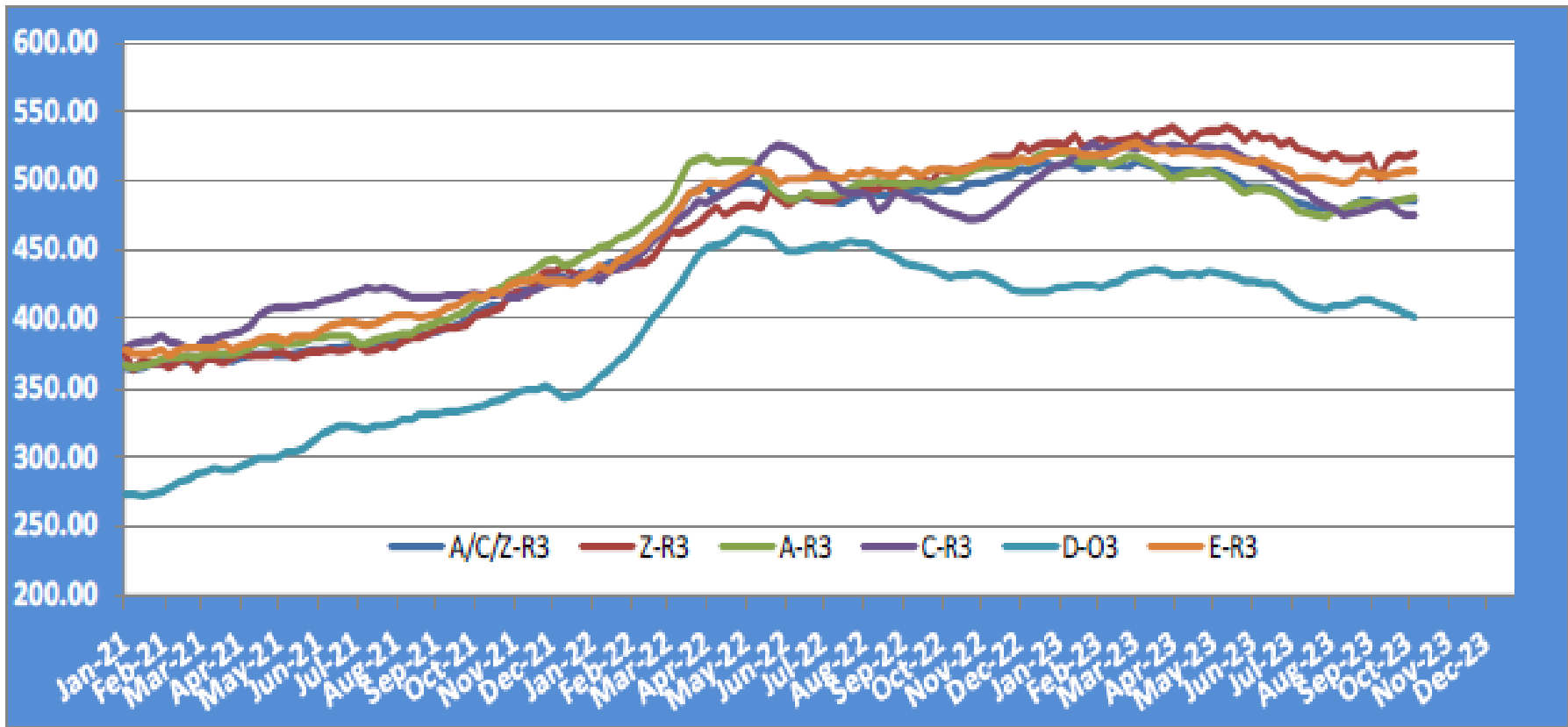
## Heifers E - R 3 > Wk.41-2023



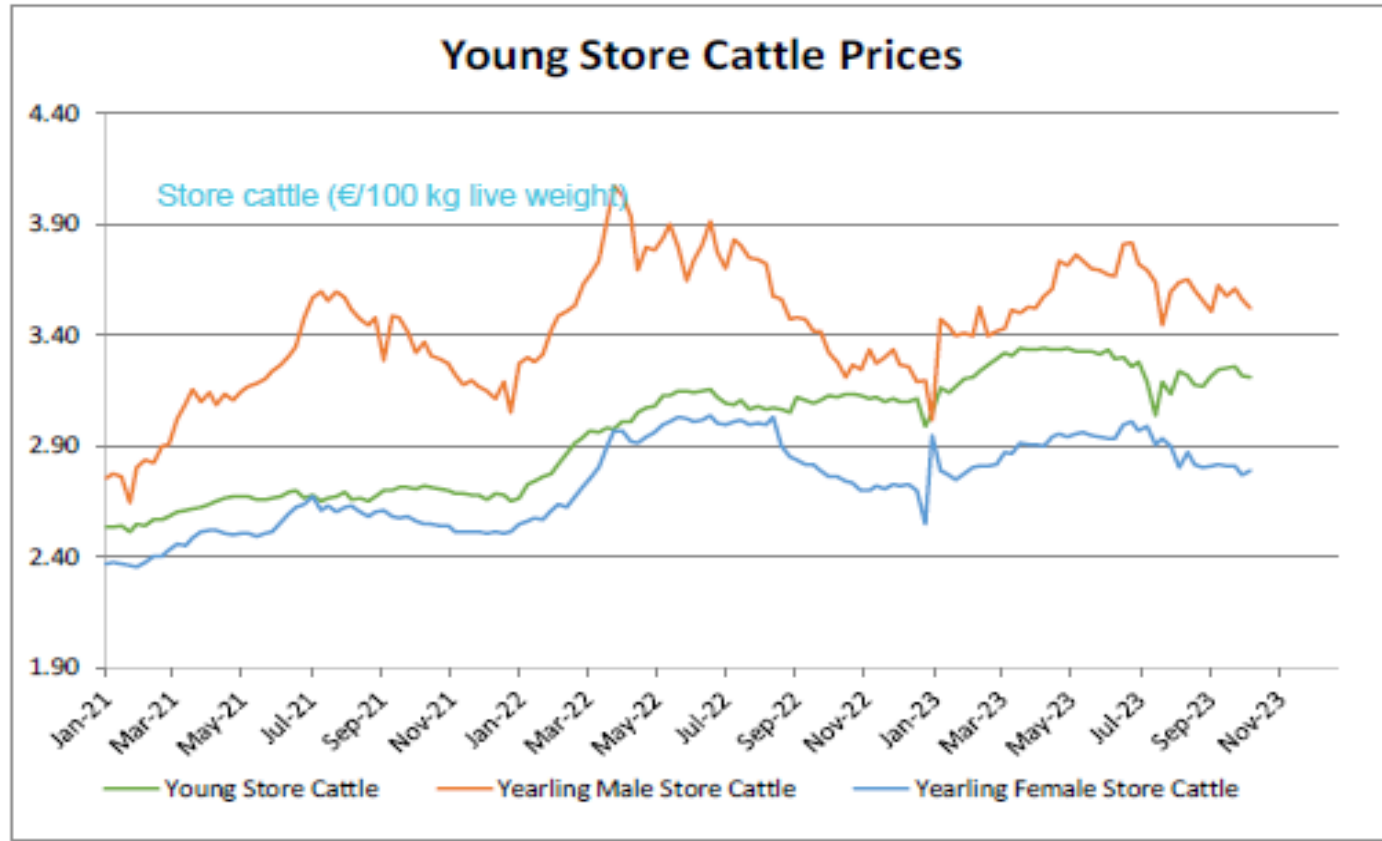
Price in week 41 : 506.75      Average price in September 2023 : 505.14  
% change y/y : - 0.3%      % change y/y : - 0.3%

# KARKAS FİYATLARI

# AB TÜM KATEGORİLERE GLOBAL BAKIŞ



## Besilik siğır (€ / 100 kg canlı ağırlık)

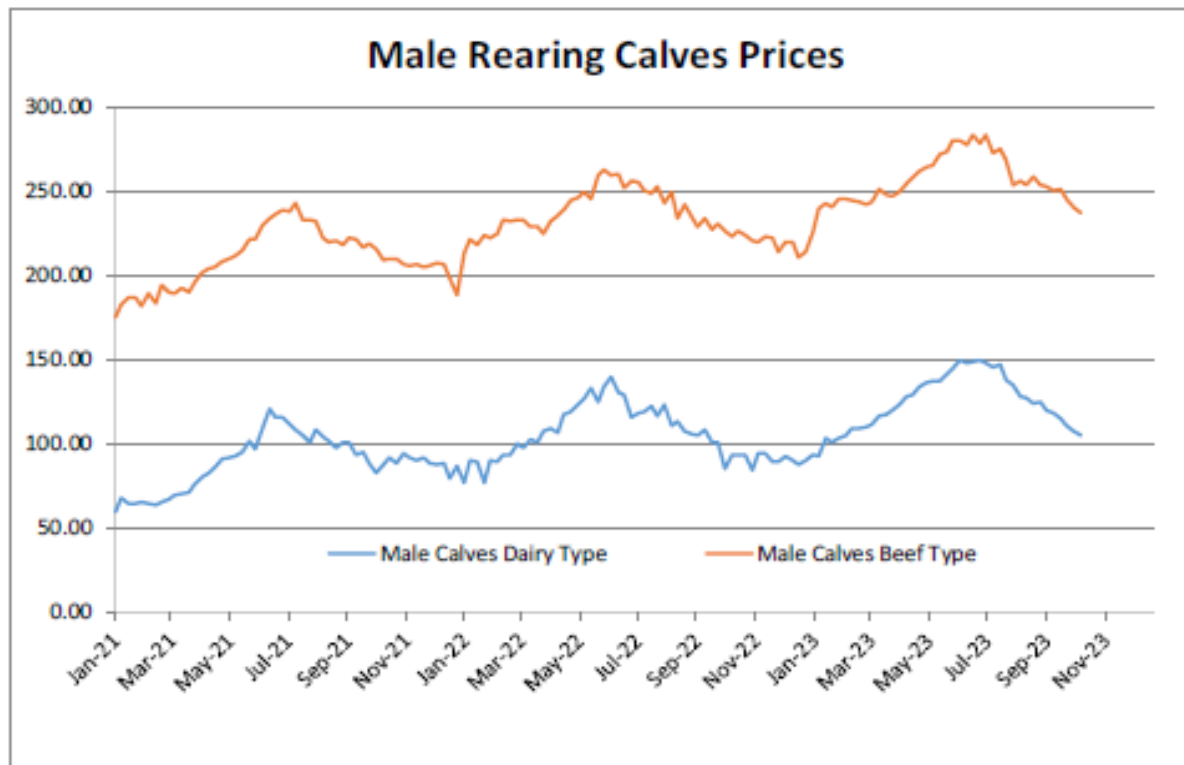


Young Store Cattle Price in	Week 41	3.21	Yearling Male Store Cattle Price	3.52
	Change y/y	+2.9%	Change y/y	+7.3%
Yearling Female Store Cattle Price		2.79		
	Change y/y	+0.9%		



### 8 gün ve 4 haftalık erkek buzağlar (€/baş)

Male calves aged between 8 days and 4 weeks (€/head)



Male Rearing Calves Beef type

Price in Week 41 237.06

Change y/y +6.4%

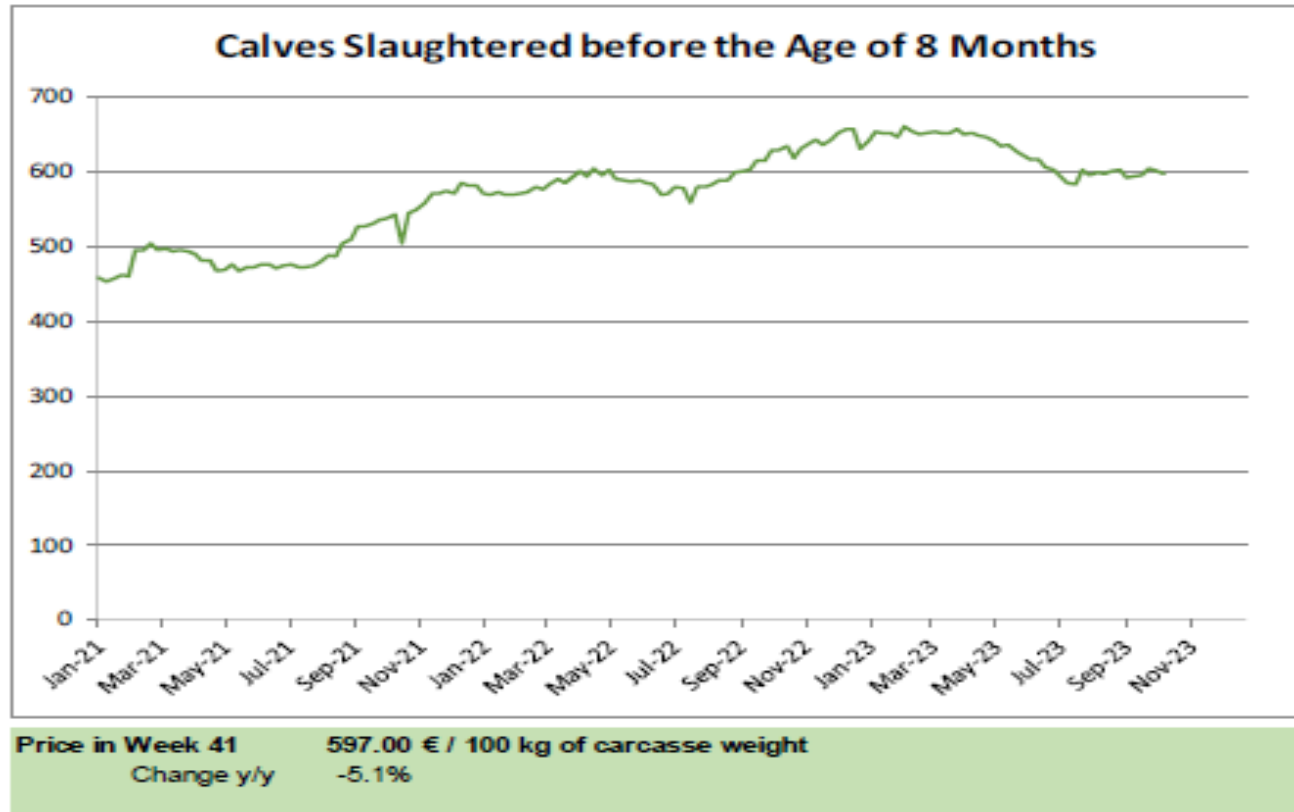
Male Rearing Calves Dairy type

Price in Week 41 105.02

Change y/y +12.7%

### 8 aylıktan küçük kesilen buzağular (€ / 100 kg canlı ağırlık)

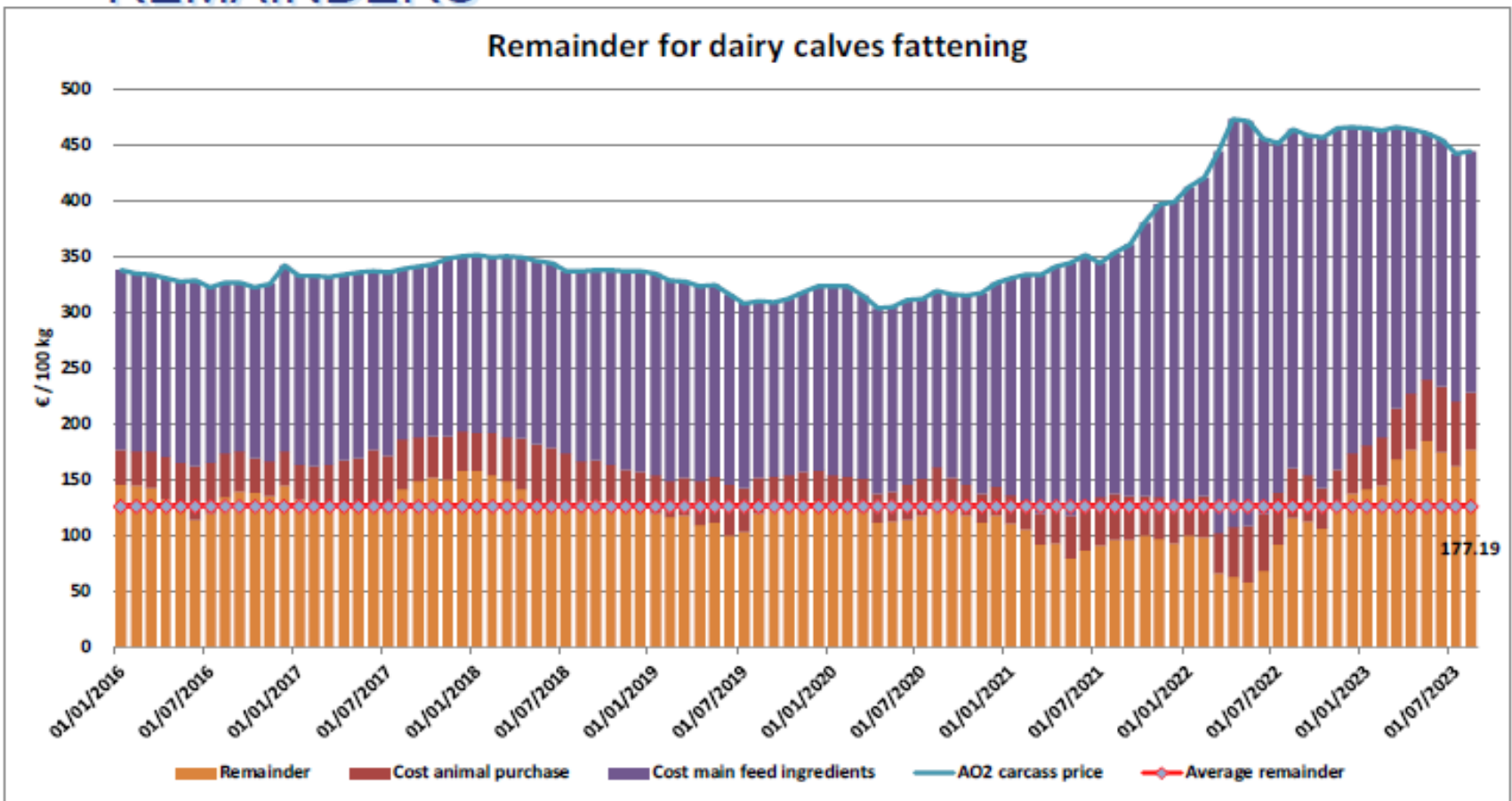
Calves slaughtered before the age of less than 8 months  
(€/100 kg cw)



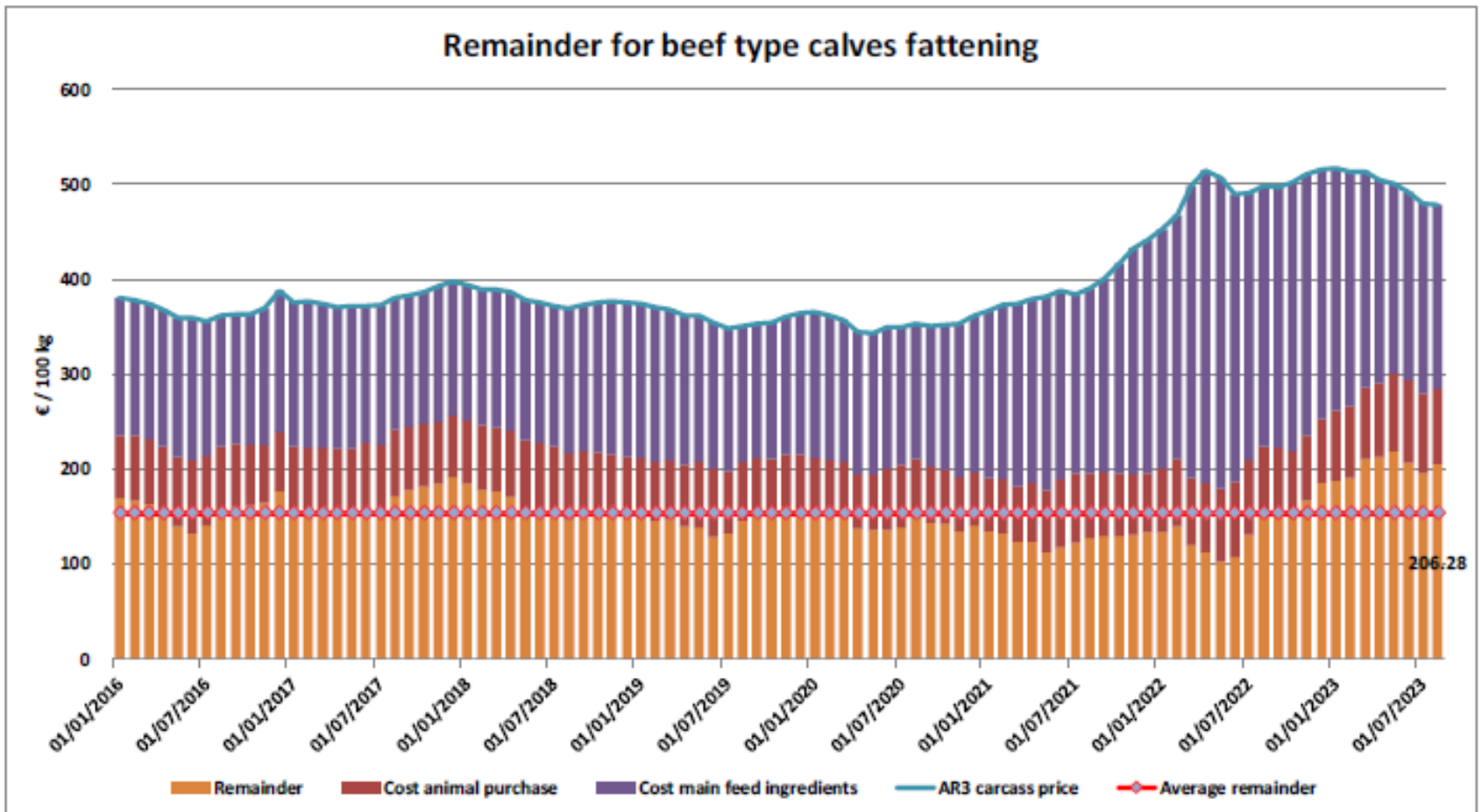


## Süt Buzağları Besiciliği İçin Kalanlar

### REMAINDERS



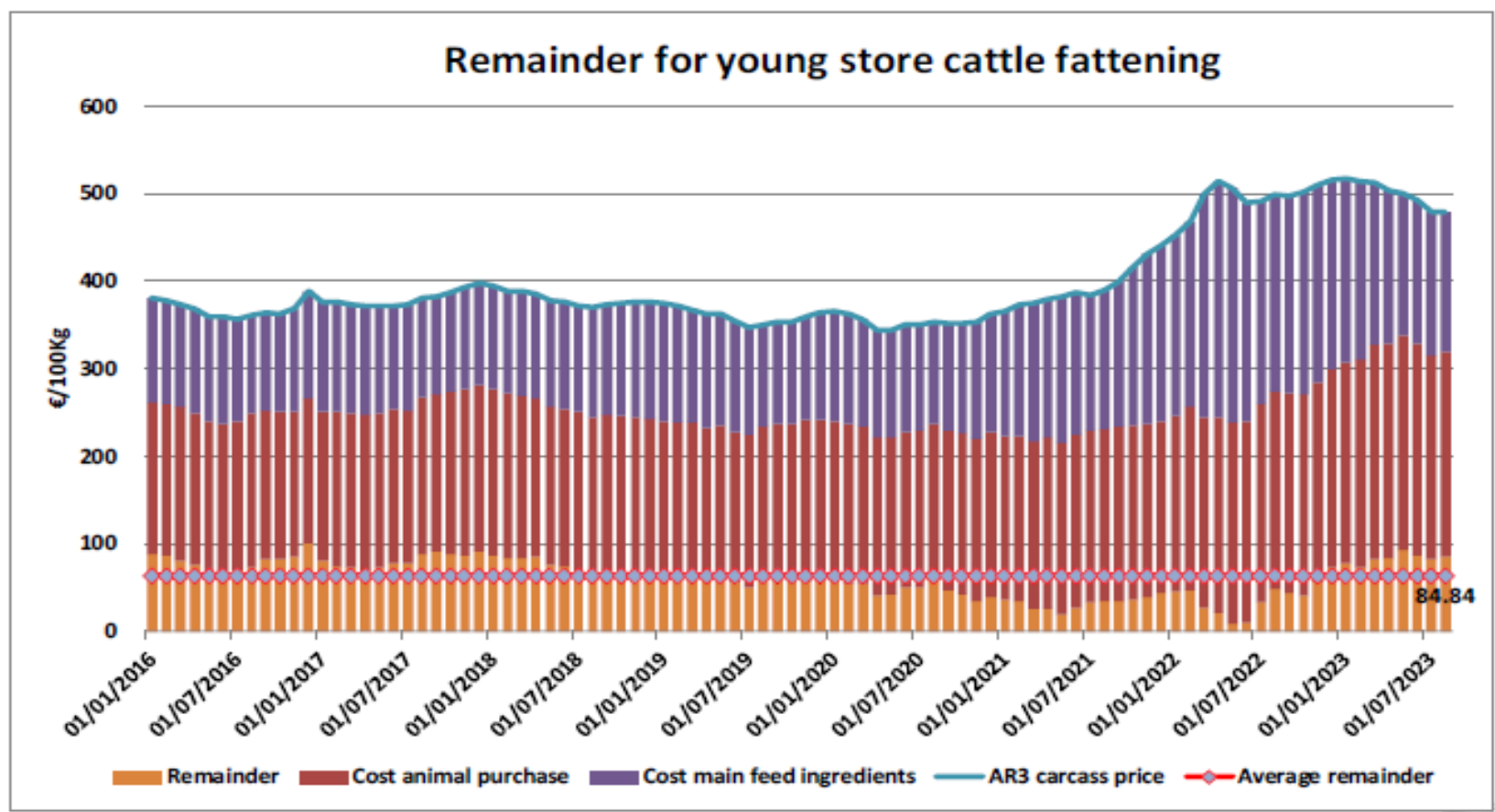
## Sığır Tipi Buzağı Besiciliği İçin Kalanlar REMAINDERS





## Genç Besilik Sığır Besiciliği İçin Kalanlar

### REMAINDERS



## AB sığır eti ve canlı hayvan ihracatı (yağlar hariç): Pazar Rakamları (COMEXT – ton ca)

Destinations	2019		2020		2021		2022		Jan-Jul 23		Compared to
	tonnes	%	tonnes	%	tonnes	%	tonnes	%	tonnes	%	
United Kingdom	433 401	38.7%	450 442	39.5%	344 633	33.4%	360 533	38.5%	206 157	38.3%	+ 0.9%
Turkey	34 555	3.1%	22 338	2.0%	14 953	1.5%	13 422	1.4%	50 656	9.4%	+++
Israel	48 505	4.3%	56 139	4.9%	66 022	6.4%	63 598	6.8%	31 383	5.8%	- 15.7%
Bosnia-Herz.	40 013	3.6%	34 896	3.1%	40 504	3.9%	38 801	4.1%	23 679	4.4%	+ 14.4%
Ghana	39 196	3.5%	47 344	4.2%	47 618	4.6%	31 762	3.4%	19 516	3.6%	- 11.4%
Ivory Coast	33 396	3.0%	32 433	2.8%	29 187	2.8%	29 879	3.2%	16 653	3.1%	- 6.3%
Morocco	12 982	1.2%	10 049	0.9%	11 868	1.2%	8 273	0.9%	13 987	2.6%	+ 196.3%
Hong Kong	46 639	4.2%	56 713	5.0%	44 769	4.3%	10 494	1.1%	12 724	2.4%	+ 90.3%
Switzerland	21 398	1.9%	26 223	2.3%	28 717	2.8%	25 000	2.7%	11 523	2.1%	- 24.0%
Kosovo	9 896	0.9%	10 391	0.9%	16 478	1.6%	17 070	1.8%	11 069	2.1%	+ 25.2%
Lebanon	36 221	3.2%	33 709	3.0%	19 527	1.9%	21 042	2.2%	10 298	1.9%	- 30.0%
Philippines	31 302	2.8%	33 650	3.0%	34 671	3.4%	29 703	3.2%	9 299	1.7%	- 48.5%
Algeria	57 152	5.1%	39 396	3.5%	24 111	2.3%	25 459	2.7%	8 047	1.5%	- 30.5%
Canada	6 756	0.6%	20 450	1.8%	20 670	2.0%	19 795	2.1%	7 909	1.5%	- 30.9%
Japan	7 982	0.7%	11 885	1.0%	21 888	2.1%	19 935	2.1%	7 213	1.3%	- 44.0%
Libya	12 885	1.2%	22 352	2.0%	19 784	1.9%	10 670	1.1%	5 909	1.1%	- 3.6%
Other Destinations	247 797	22.1%	230 968	20.3%	245 578	23.8%	211 517	22.6%	91 653	17.0%	
<b>Total</b>	<b>1 120 078</b>		<b>1 139 378</b>		<b>1 030 978</b>		<b>936 953</b>		<b>537 653</b>		
% change			+ 2%		- 10%		- 9%		- 1.0%		

## AB sığır eti ihracatı (yağlar hariç): Pazar Rakamları (COMEXT – ton ca)

### Destinations

	2019		2020		2021		2022		Jan-Jul 23		Compared to
	tonnes	%	tonnes	%	tonnes	%	tonnes	%	tonnes	%	
United Kingdom	422 733	47.8%	429 367	47.5%	329 539	40.5%	347 164	47.0%	198 854	48.2%	+ 1.0%
Bosnia-Herz.	37 700	4.3%	32 596	3.6%	37 581	4.6%	35 522	4.8%	21 654	5.3%	+ 14.4%
Turkey	1 326	0.1%	349	0.0%	608	0.1%	641	0.1%	19 520	4.7%	+++
Ghana	39 196	4.4%	47 344	5.2%	47 618	5.9%	31 762	4.3%	19 516	4.7%	- 11.4%
Ivory Coast	33 396	3.8%	32 433	3.6%	29 187	3.6%	29 879	4.0%	16 653	4.0%	- 6.3%
Hong Kong	46 639	5.3%	56 713	6.3%	44 769	5.5%	10 494	1.4%	12 724	3.1%	+ 90.3%
Israel	21 902	2.5%	21 131	2.3%	20 548	2.5%	20 876	2.8%	11 083	2.7%	- 13.9%
Switzerland	20 320	2.3%	25 170	2.8%	27 394	3.4%	23 776	3.2%	10 907	2.6%	- 23.9%
Philippines	31 302	3.5%	33 650	3.7%	34 671	4.3%	29 703	4.0%	9 299	2.3%	- 48.5%
Canada	6 756	0.8%	20 450	2.3%	20 670	2.5%	19 795	2.7%	7 909	1.9%	- 30.9%
Japan	7 982	0.9%	11 885	1.3%	21 888	2.7%	19 935	2.7%	7 213	1.7%	- 44.0%
Ukraine	12 684	1.4%	13 992	1.5%	13 681	1.7%	11 525	1.6%	5 546	1.3%	- 23.8%
North Macedonia	10 744	1.2%	10 034	1.1%	12 777	1.6%	9 492	1.3%	5 428	1.3%	- 6.4%
USA	7 866	0.9%	12 308	1.4%	11 430	1.4%	9 585	1.3%	4 052	1.0%	- 34.7%
Angola	8 410	1.0%	9 324	1.0%	7 600	0.9%	8 057	1.1%	3 808	0.9%	+ 18.5%
Other Destinations	170 278	19.3%	142 075	15.6%	148 043	18.3%	125 180	16.9%	54 707	13.3%	
Extra-EU	884 483		904 349		813 435		738 712		412 351		
Total (without UK)	884 483		904 349		813 435		738 712		412 351		
% change			+ 2%		- 10%		- 9%		- 5.2%		

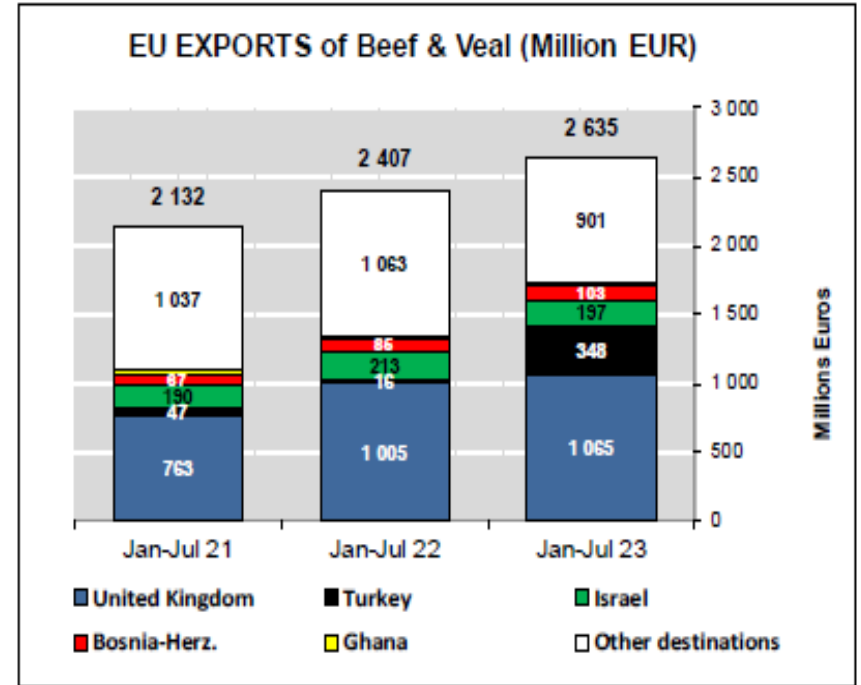
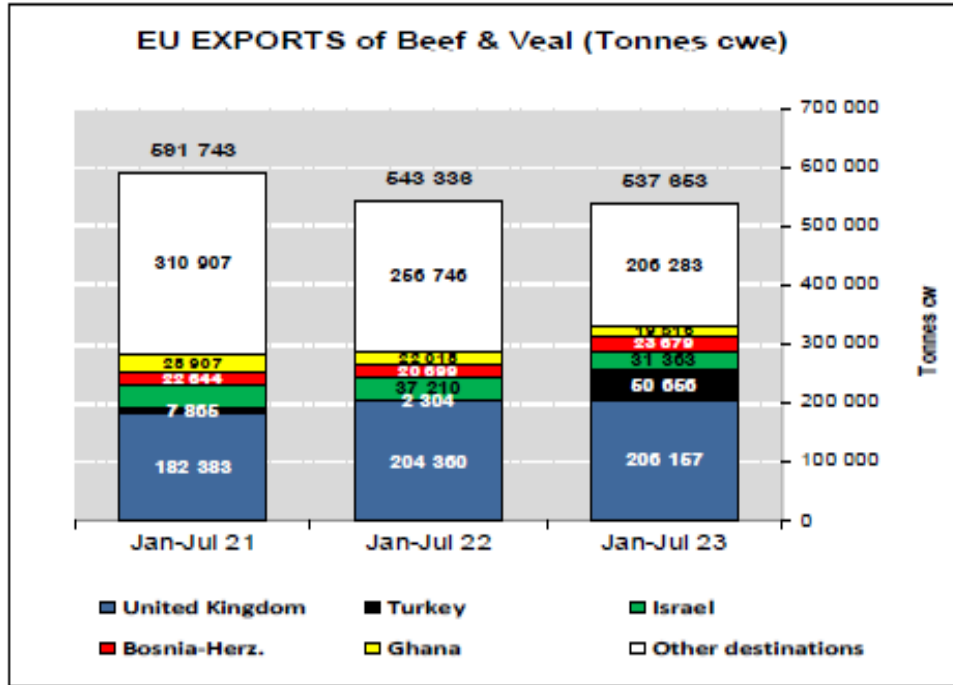
## AB sığır eti yağları ihracatı: Pazar Rakamları (COMEXT – ton ca)

### Destinations

	2019		2020		2021		2022		Jan-Jul 23		Compared to
	tonnes	%	tonnes	%	tonnes	%	tonnes	%	tonnes	%	
United Kingdom	422 733	47.8%	429 367	47.5%	329 539	40.5%	347 164	47.0%	198 854	48.2%	+ 1.0%
Bosnia-Herz.	37 700	4.3%	32 596	3.6%	37 581	4.6%	35 522	4.8%	21 654	5.3%	+ 14.4%
Turkey	1 326	0.1%	349	0.0%	608	0.1%	641	0.1%	19 520	4.7%	+++
Ghana	39 196	4.4%	47 344	5.2%	47 618	5.9%	31 762	4.3%	19 516	4.7%	- 11.4%
Ivory Coast	33 396	3.8%	32 433	3.6%	29 187	3.6%	29 879	4.0%	16 653	4.0%	- 6.3%
Hong Kong	46 639	5.3%	56 713	6.3%	44 769	5.5%	10 494	1.4%	12 724	3.1%	+ 90.3%
Israel	21 902	2.5%	21 131	2.3%	20 548	2.5%	20 876	2.8%	11 083	2.7%	- 13.9%
Switzerland	20 320	2.3%	25 170	2.8%	27 394	3.4%	23 776	3.2%	10 907	2.6%	- 23.9%
Philippines	31 302	3.5%	33 650	3.7%	34 671	4.3%	29 703	4.0%	9 299	2.3%	- 48.5%
Canada	6 756	0.8%	20 450	2.3%	20 670	2.5%	19 795	2.7%	7 909	1.9%	- 30.9%
Japan	7 982	0.9%	11 885	1.3%	21 888	2.7%	19 935	2.7%	7 213	1.7%	- 44.0%
Ukraine	12 684	1.4%	13 992	1.5%	13 681	1.7%	11 525	1.6%	5 546	1.3%	- 23.8%
North Macedonia	10 744	1.2%	10 034	1.1%	12 777	1.6%	9 492	1.3%	5 428	1.3%	- 6.4%
USA	7 866	0.9%	12 308	1.4%	11 430	1.4%	9 585	1.3%	4 052	1.0%	- 34.7%
Angola	8 410	1.0%	9 324	1.0%	7 600	0.9%	8 057	1.1%	3 808	0.9%	+ 18.5%
Other Destinations	170 278	19.3%	142 075	15.8%	148 043	18.3%	125 180	16.0%	54 707	13.3%	
Extra-EU	884 483		904 349		813 435		738 712		412 351		
Total (without UK)	884 483		904 349		813 435		738 712		412 351		
% change			+ 2%		- 10%		- 9%		- 5.2%		

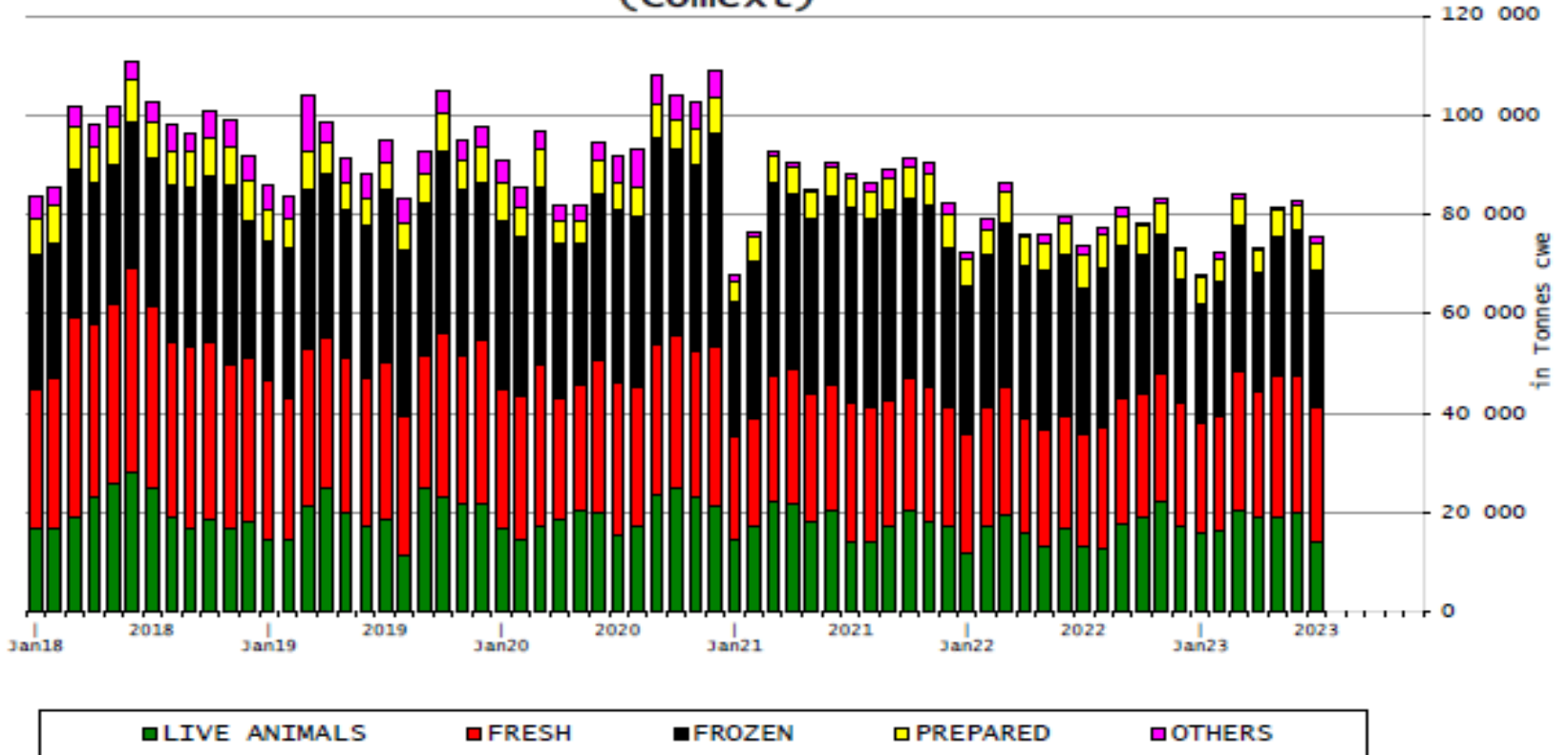


## AB sığır eti ve canlı hayvan ihracatı (yağlar hariç): Pazar Rakamları (COMEXT – ton ca)



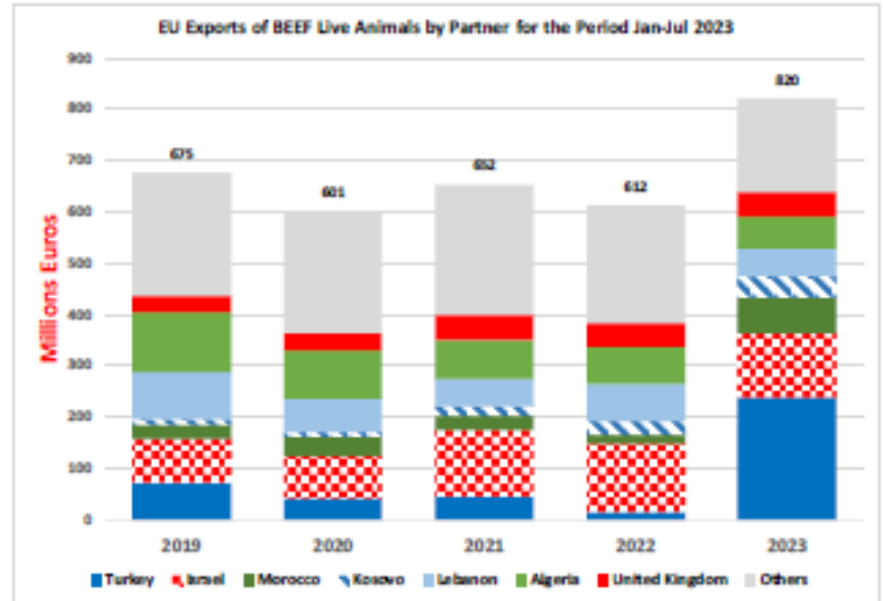
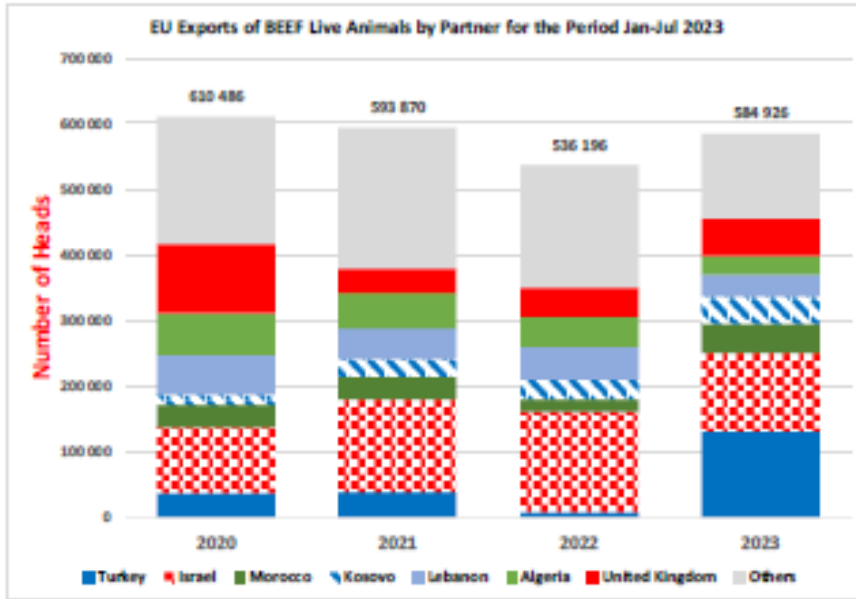
## AB siğir eti ürünleri ihracatı (COMEXT)

EU Exports of BEEF products  
(Comext)





European  
Commission



## AB Sığır Eti ve Canlı Hayvan İthalatları (yağlar hariç): Pazar Rakamları (COMEXT – ton ca)

### Origins

	2019		2020		2021		2022		Jan-Jul 23		Compared to
	tonnes	%	tonnes	%	tonnes	%	tonnes	%	tonnes	%	
United Kingdom	150 838	35.6%	120 733	35.1%	87 599	28.3%	142 454	37.0%	57 908	27.6%	- 25.6%
Brazil	99 569	23.5%	84 139	24.4%	81 737	26.4%	86 551	22.5%	57 280	27.3%	+ 13.0%
Argentina	65 324	15.4%	56 421	16.4%	52 300	16.9%	62 605	16.3%	37 643	17.9%	+ 6.8%
Uruguay	40 483	9.5%	34 611	10.0%	42 669	13.8%	37 669	9.8%	26 519	12.6%	+ 1.0%
USA	16 852	4.0%	16 532	4.8%	14 910	4.8%	17 269	4.5%	10 733	5.1%	+ 8.4%
Australia	16 432	3.9%	11 058	3.2%	8 925	2.9%	8 385	2.2%	4 818	2.3%	- 15.0%
Namibia	7 706	1.8%	1 445	0.4%	1 996	0.6%	5 168	1.3%	3 935	1.9%	+ 87.9%
Paraguay	5 203	1.2%	4 234	1.2%	3 933	1.3%	5 404	1.4%	3 364	1.6%	+ 17.1%
New Zealand	6 712	1.6%	6 116	1.8%	4 380	1.4%	5 527	1.4%	2 725	1.3%	- 14.7%
Switzerland	4 393	1.0%	4 187	1.2%	4 714	1.5%	4 730	1.2%	1 871	0.9%	- 12.2%
Canada	2 518	0.6%	1 550	0.5%	1 816	0.6%	2 176	0.6%	941	0.4%	- 11.0%
Botswana	4 950	1.2%	788	0.2%	331	0.1%	928	0.2%	602	0.3%	- 11.2%
Serbia	1 062	0.3%	931	0.3%	963	0.3%	1 058	0.3%	553	0.3%	- 18.1%
Japan	997	0.2%	789	0.2%	1 478	0.5%	3 114	0.8%	499	0.2%	- 78.4%
Norway	125	0.0%	335	0.1%	571	0.2%	705	0.2%	389	0.2%	- 0.2%
Chile	392	0.1%	168	0.0%	238	0.1%	404	0.1%	230	0.1%	- 12.7%
Other Destinations	483	0.1%	357	0.1%	710	0.2%	961	0.2%	99	0.0%	
<b>Total</b>	<b>424 040</b>		<b>344 393</b>		<b>309 270</b>		<b>385 109</b>		<b>210 109</b>		
% change			- 19%		- 10%		+ 25%		- 5.2%		

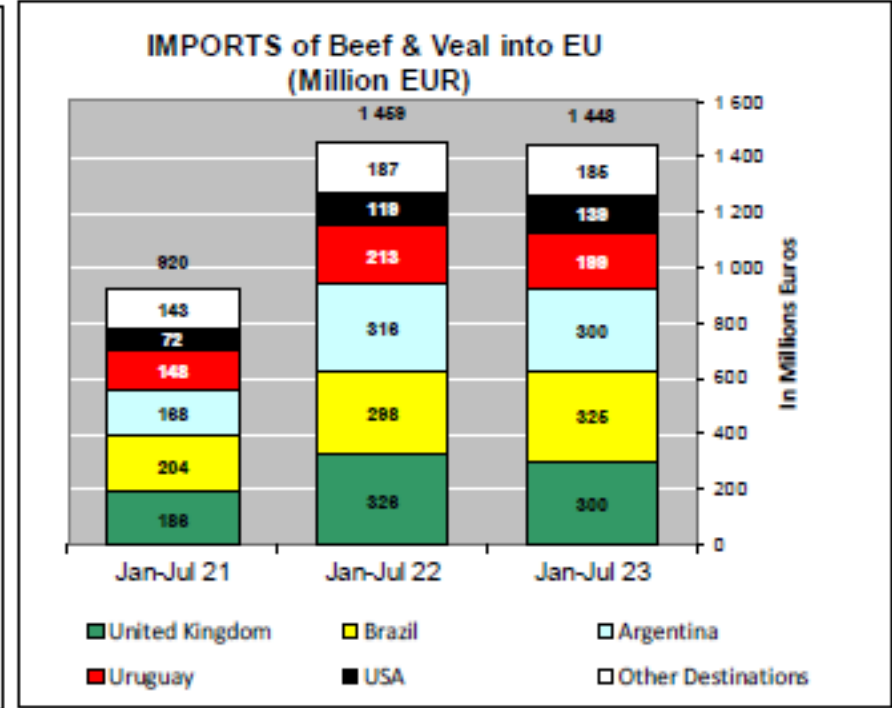
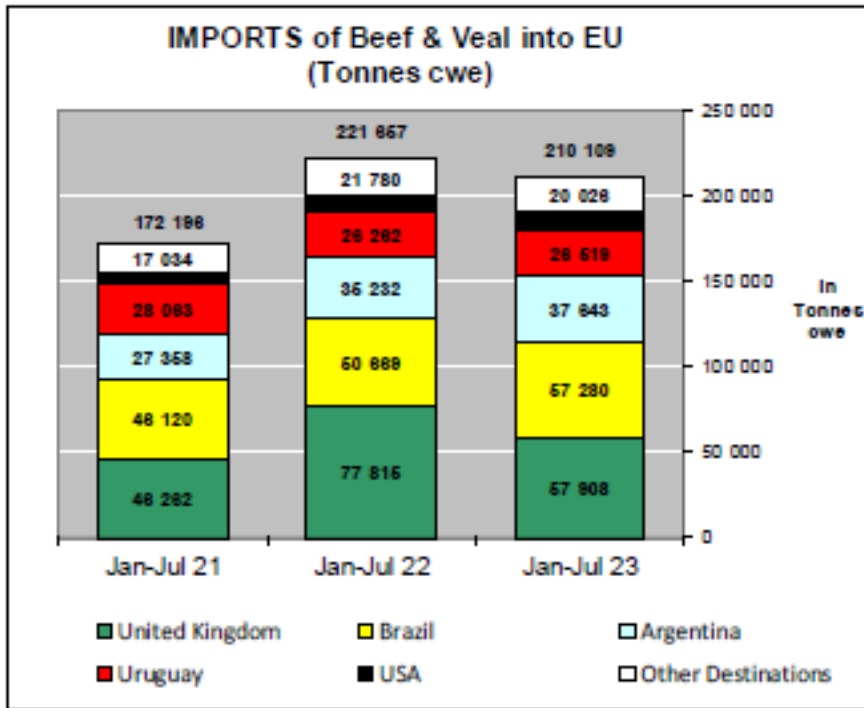
## AB Sığır Eti İthalatları (yağlar hariç): Pazar Rakamları (COMEXT – ton ca)

Origins	2019		2020		2021		2022		Jan 23		Compared to
	tonnes	%	tonnes	%	tonnes	%	tonnes	%	tonnes	%	
United Kingdom	150 838	35.6%	120 733	35.1%	87 599	28.3%	142 262	36.8%	12 590	35.0%	+ 52.1%
Brazil	99 569	23.5%	84 139	24.4%	81 737	26.4%	86 428	22.3%	8 097	22.5%	+ 3.0%
Argentina	65 324	15.4%	56 421	16.4%	52 300	16.9%	63 575	16.4%	6 599	18.4%	+ 35.9%
Uruguay	40 483	9.5%	34 611	10.0%	42 669	13.8%	38 049	9.8%	4 822	13.4%	- 9.7%
USA	16 852	4.0%	16 532	4.8%	14 910	4.8%	17 803	4.6%	932	2.6%	+ 9.8%
Australia	16 432	3.9%	11 058	3.2%	8 925	2.9%	8 886	2.3%	928	2.6%	- 36.2%
Paraguay	5 203	1.2%	4 234	1.2%	3 933	1.3%	5 404	1.4%	511	1.4%	+ 14.5%
Namibia	7 706	1.8%	1 445	0.4%	1 996	0.6%	5 168	1.3%	489	1.4%	+ 78.0%
Switzerland	4 393	1.0%	4 187	1.2%	4 714	1.5%	4 729	1.2%	309	0.9%	- 29.4%
New Zealand	6 712	1.6%	6 116	1.8%	4 380	1.4%	5 589	1.4%	290	0.8%	+ 18.0%
Canada	2 518	0.6%	1 550	0.5%	1 816	0.6%	2 177	0.6%	109	0.3%	+ 5.2%
Serbia	1 062	0.3%	931	0.3%	963	0.3%	1 058	0.3%	103	0.3%	+ 6.8%
Norway	125	0.0%	335	0.1%	571	0.2%	705	0.2%	63	0.2%	+++
Japan	997	0.2%	789	0.2%	1 478	0.5%	2 893	0.7%	51	0.1%	- 62.2%
Chile	392	0.1%	168	0.0%	238	0.1%	396	0.1%	33	0.1%	+ 40.9%
Montenegro	0	0.0%	0	0.0%	31	0.0%	75	0.0%	3	0.0%	+ 23.7%
Other Destinations	5 434	1.3%	1 145	0.3%	1 010	0.3%	1 814	0.5%	5	0.0%	
<b>Total</b>	<b>424 040</b>		<b>344 393</b>		<b>309 270</b>		<b>387 011</b>		<b>35 934</b>		
% change			- 19%		- 10%		+ 25%		+ 17.8%		

## AB Sığır Eti Yağları İthalatları: Pazar Rakamları (COMEXT – ton ca)

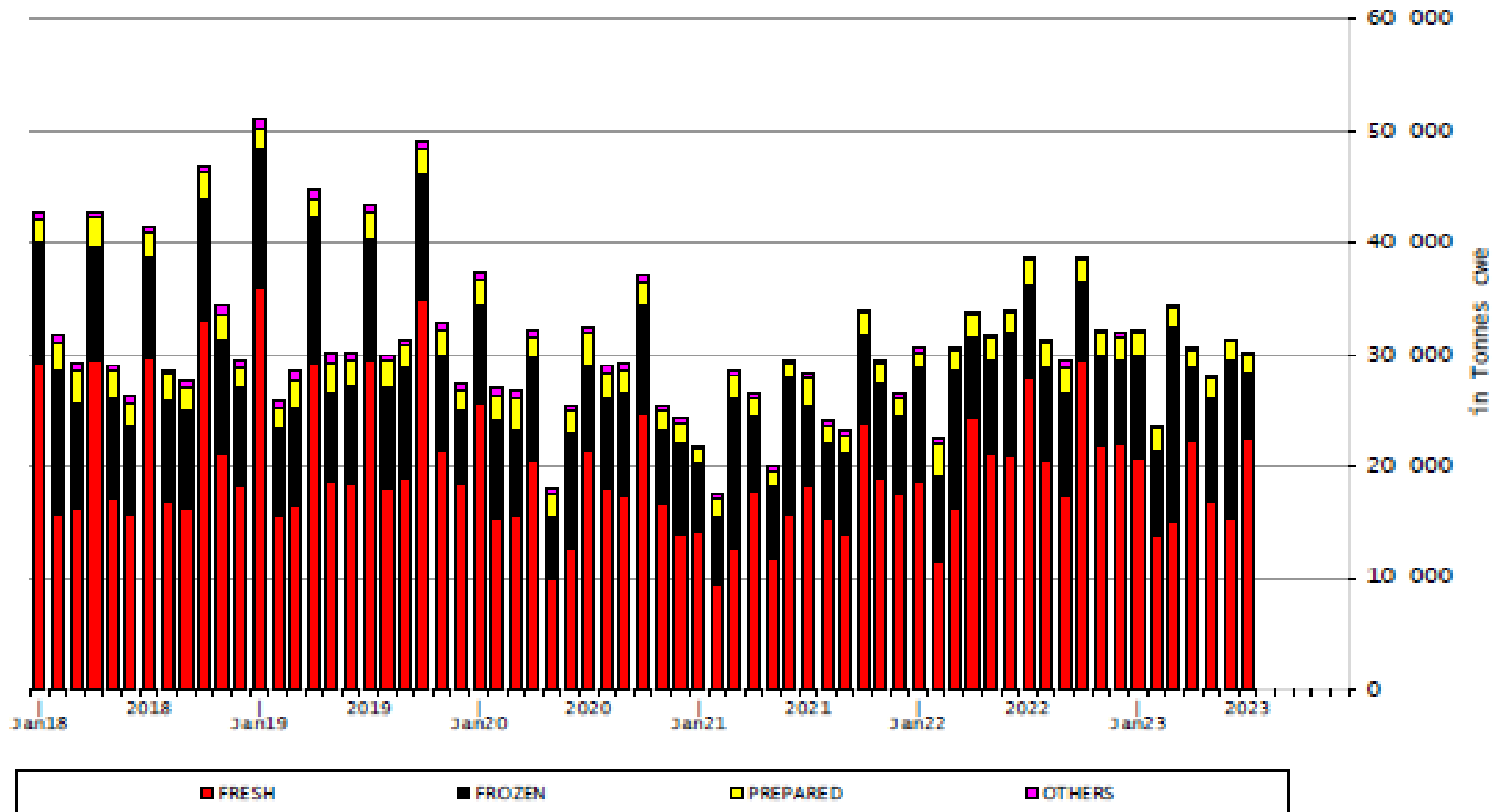
Origins	2021		2022		Jan to Jul 2023		Compared to Jan to Jul 2022
	Tons	% Extra EU	Tons	% Extra EU	Tons	% Extra EU	
United Kingdom	11 505	21.6%	9 720	29.7%	5 009	89.6%	-19.3%
Switzerland	519	1.0%	612	1.9%	354	6.3%	-14.8%
Uruguay	17 065	32.0%	7 512	23.0%	216	3.9%	-97.1%
New Zealand	14	0.0%	14	0.0%	14	0.3%	+0.0%
Australia	12	0.0%	0	0.0%	0	0.0%	+++
India	-	0.0%	0	0.0%	0	0.0%	
Brazil	0	0.0%	0	0.0%	0	0.0%	-43.1%
USA	0	0.0%	0	0.0%	0	0.0%	+++
Norway	158	0.3%	-	0.0%	0	0.0%	
Other Destinations	23 991	45.0%	14 816	45.3%	0	0.0%	
Extra-EU	53 264		32 675		5 593		-80.6%
% Change				-38.7%			

## AB Sığır Eti ve Canlı Hayvan İthalatları (yağlar hariç)



# AB Sığır Eti Ürünleri İthalatları

## EU Imports of BEEF products





## EU Export of BEEF (excluding fats) to UK by Products from Jan to Jul

In Tons of Carcase Weight

	2021			2022			2023			% 2023/2022	
	United Kingdom	Extra-EU	%	United Kingdom	Extra-EU	%	United Kingdom	Extra-EU	%	United Kingdom	Extra-EU
Live Animals	8 981	129 841	6.9%	7 503	108 280	6.9%	7 303	125 303	5.8%	-2.7%	+15.7%
Meats	173 402	461 902	37.5%	196 857	435 056	45.2%	198 854	412 351	48.2%	+1.0%	-5.2%
Fresh	102 699	168 854	60.8%	103 182	159 418	64.7%	108 927	175 864	61.9%	+5.6%	+10.3%
Frozen	38 809	144 507	26.9%	58 011	134 068	43.3%	56 511	109 258	51.7%	-2.6%	-18.5%
Salted Meat	395	1 225	32.3%	251	1 710	14.7%	273	1 860	14.7%	+8.6%	+8.8%
Prepared	21 376	36 827	58.0%	24 724	41 260	59.9%	22 907	35 468	64.6%	-7.3%	-14.0%
Fresh Offals	2 928	4 447	65.8%	4 265	5 939	71.8%	3 868	5 939	65.1%	-9.3%	-0.0%
Frozen Offals	6 862	99 882	6.9%	6 101	83 715	7.3%	6 105	79 103	7.7%	+0.1%	-5.5%
Salted Offals	152	5 876	2.6%	115	8 592	1.3%	109	4 612	2.4%	-5.4%	-46.3%
Prepared Offal	182	283	64.4%	208	353	59.0%	154	246	62.4%	-26.3%	-30.3%
<b>Total Beef</b>	<b>182 383</b>	<b>591 743</b>	<b>30.8%</b>	<b>204 360</b>	<b>543 336</b>	<b>37.6%</b>	<b>206 157</b>	<b>537 653</b>	<b>38.3%</b>	<b>+0.9%</b>	<b>-1.0%</b>

Source : Comext



## EU Import of BEEF (excluding fats) from UK by Products from Jan to Jul

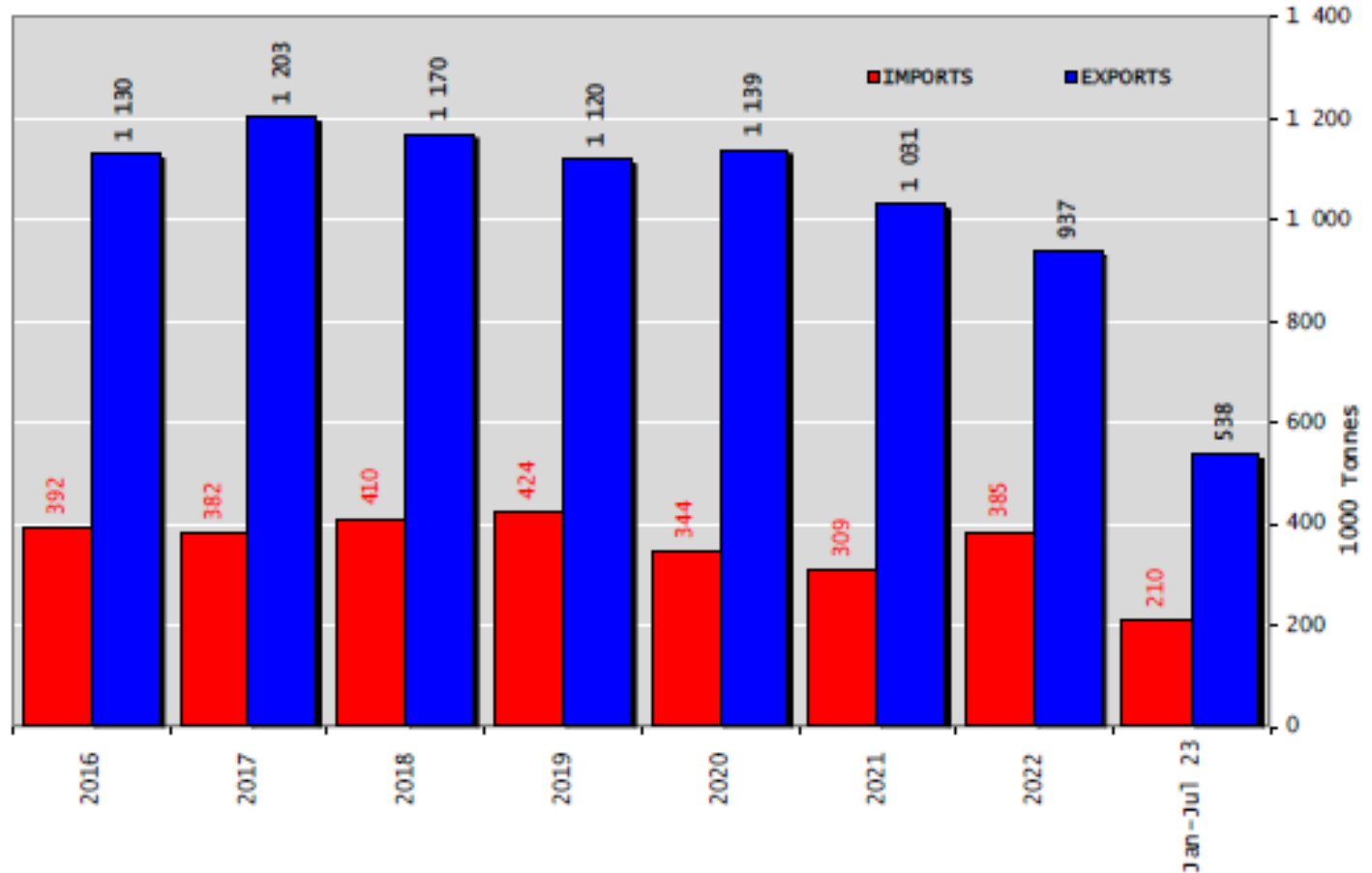
*In Tons of Carcase Weight*

	2021			2022			2023			% 2023/2022	
	United Kingdom	Extra-EU	%	United Kingdom	Extra-EU	%	United Kingdom	Extra-EU	%	United Kingdom	Extra-EU
Live Animals	547	638	85.8%	397	449	88.3%	54	117	46.5%	-86.3%	-74.0%
Meats	45 715	171 558	26.6%	77 418	221 208	35.0%	57 854	209 992	27.6%	-25.3%	-5.1%
Fresh	28 256	96 547	29.3%	55 236	137 417	40.2%	39 015	123 082	31.7%	-29.4%	-10.4%
Frozen	10 820	57 050	19.0%	12 597	62 634	20.1%	10 216	67 358	15.2%	-18.9%	+7.5%
Salted Meat	148	1 830	8.1%	163	1 537	10.6%	221	1 321	16.7%	+35.7%	-14.0%
Prepared	3 727	12 017	31.0%	5 323	14 008	38.0%	4 003	12 285	32.6%	-24.8%	-12.3%
Fresh Offals	2 186	2 905	75.2%	2 453	3 141	78.1%	2 659	3 388	78.5%	+8.4%	+7.8%
Frozen Offals	556	1 176	47.3%	1 618	2 405	67.3%	1 717	2 503	68.6%	+6.1%	+4.0%
Salted Offals	15	18	81.6%	19	24	77.0%	20	42	48.7%	+9.1%	+72.6%
Prepared Offal	7	14	47.4%	8	41	19.9%	3	13	21.0%	-66.4%	-68.2%
<b>Total Beef</b>	<b>46 262</b>	<b>172 196</b>	<b>26.9%</b>	<b>77 815</b>	<b>221 657</b>	<b>35.1%</b>	<b>57 908</b>	<b>210 109</b>	<b>27.6%</b>	<b>-25.6%</b>	<b>-5.2%</b>

Source : Estat - Comext

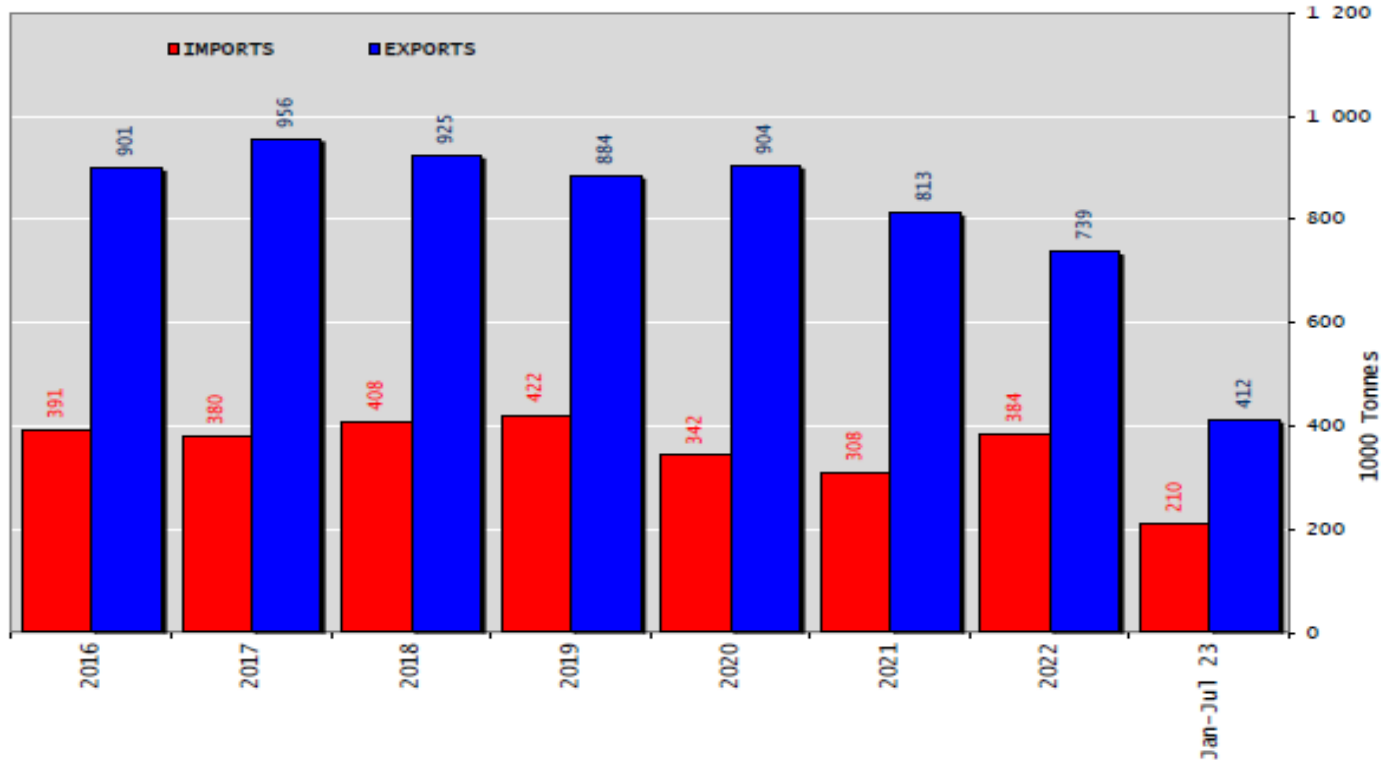
## Sığır Eti ve Canlı Hayvan Ticaret Dengesi (Ton)

Trade Balance of Beef Products and Live Animals



## Sığır Eti Ürünleri Ticaret Dengesi (yağlar dahil değildir) (Canlı hayvan hariç) (Ton)

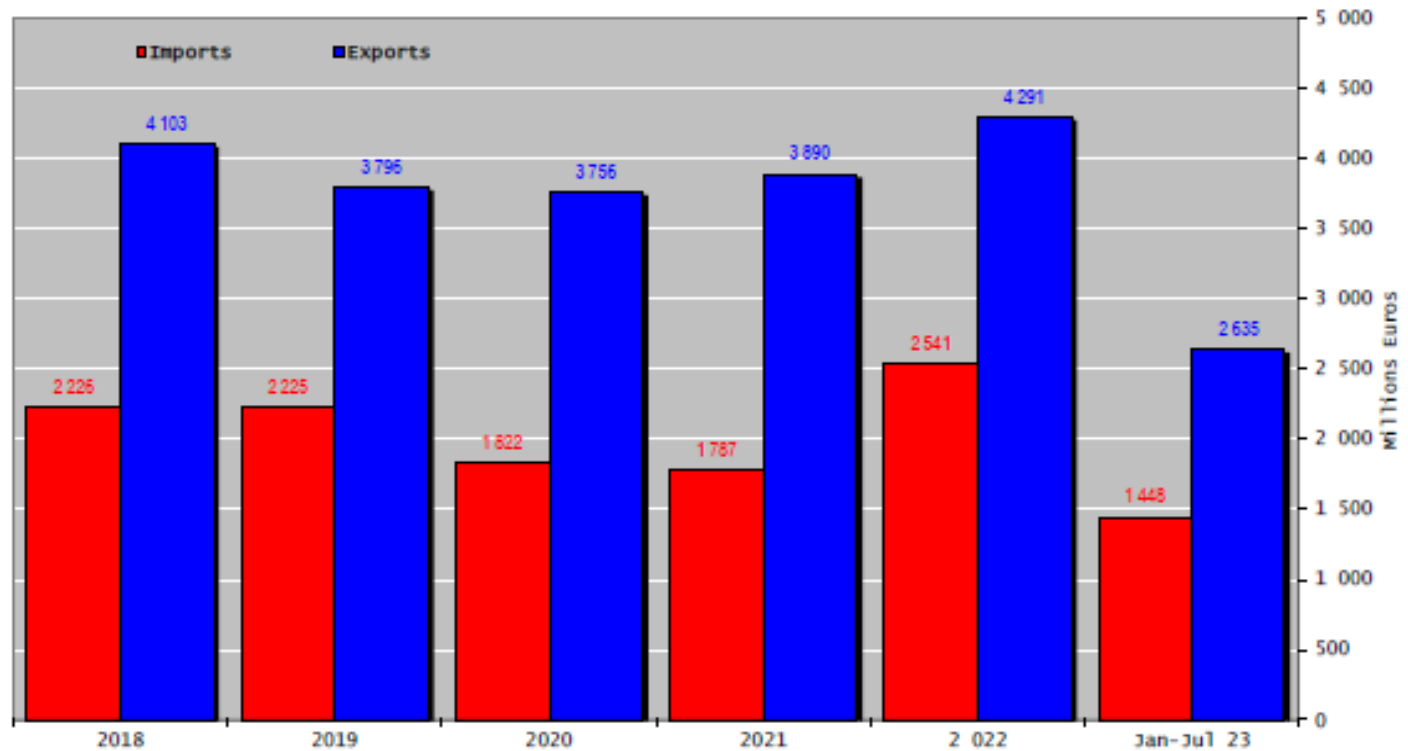
Trade Balance of Beef Products (not including Fats)  
(Except Live Animals)



er 2023

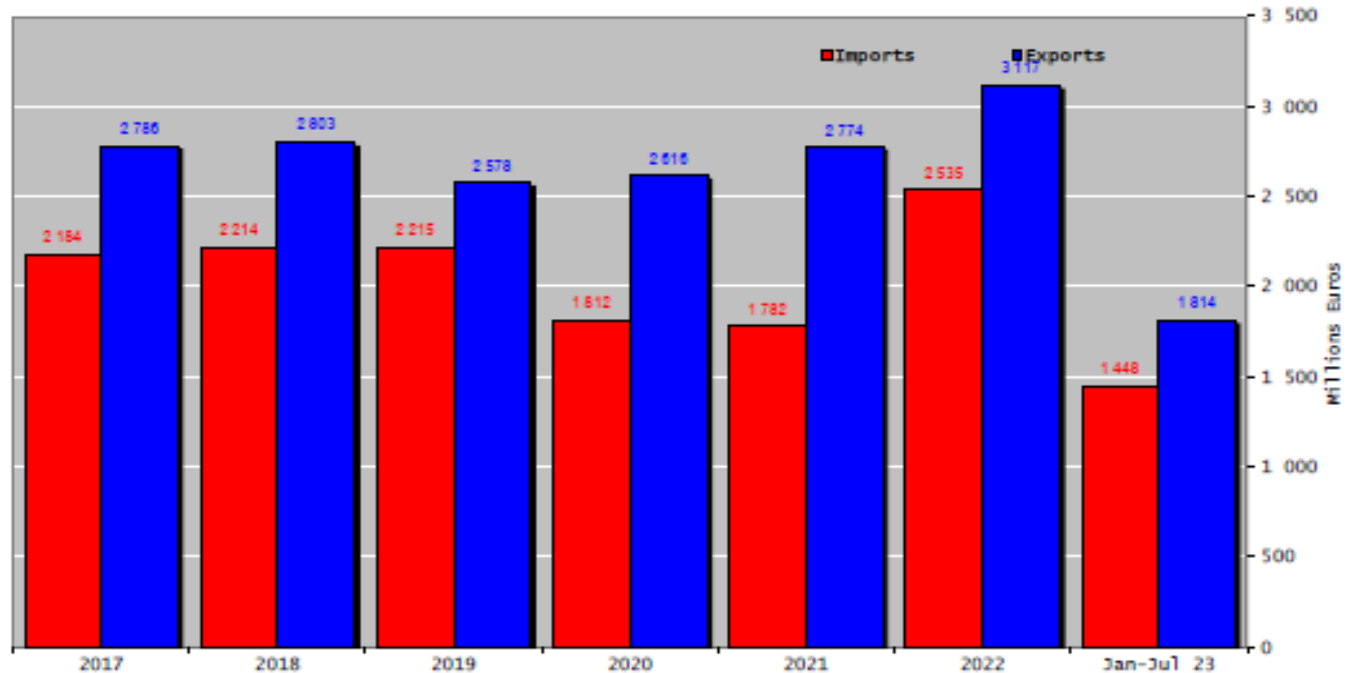
## Sığır Eti ve Canlı Hayvan Ticaret Dengesi (Euro)

### Trade Balance of Beef Products and Live Animals



## Sığır Eti Ürünleri Ticaret Dengesi (yağlar dahil değildir) (Canlı hayvan hariç) (Euro)

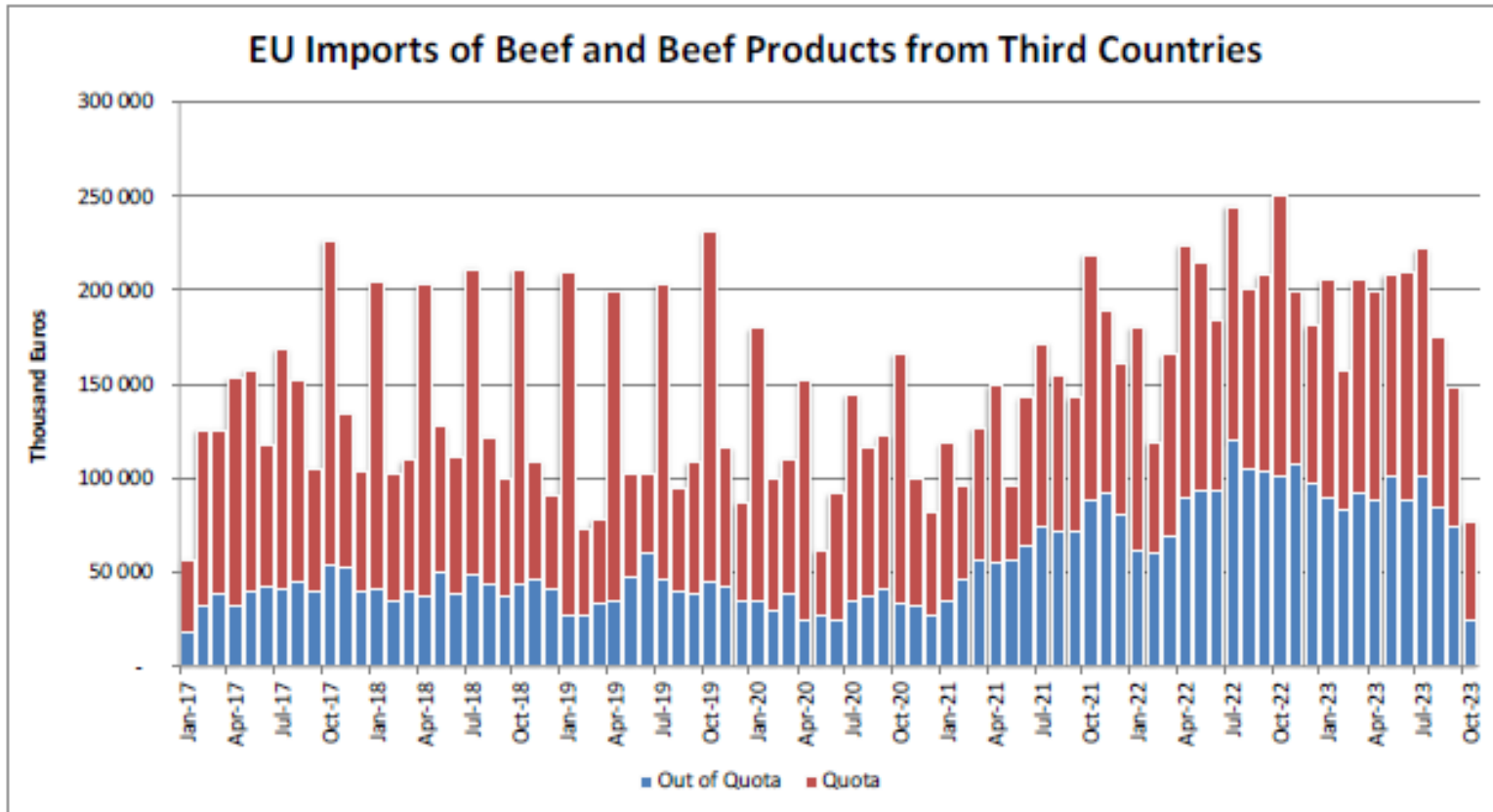
Trade Balance of Beef Products (not including Fats)  
(Except Live Animals)



# Tarife Kotalarına giren ve çıkan ithalatlar



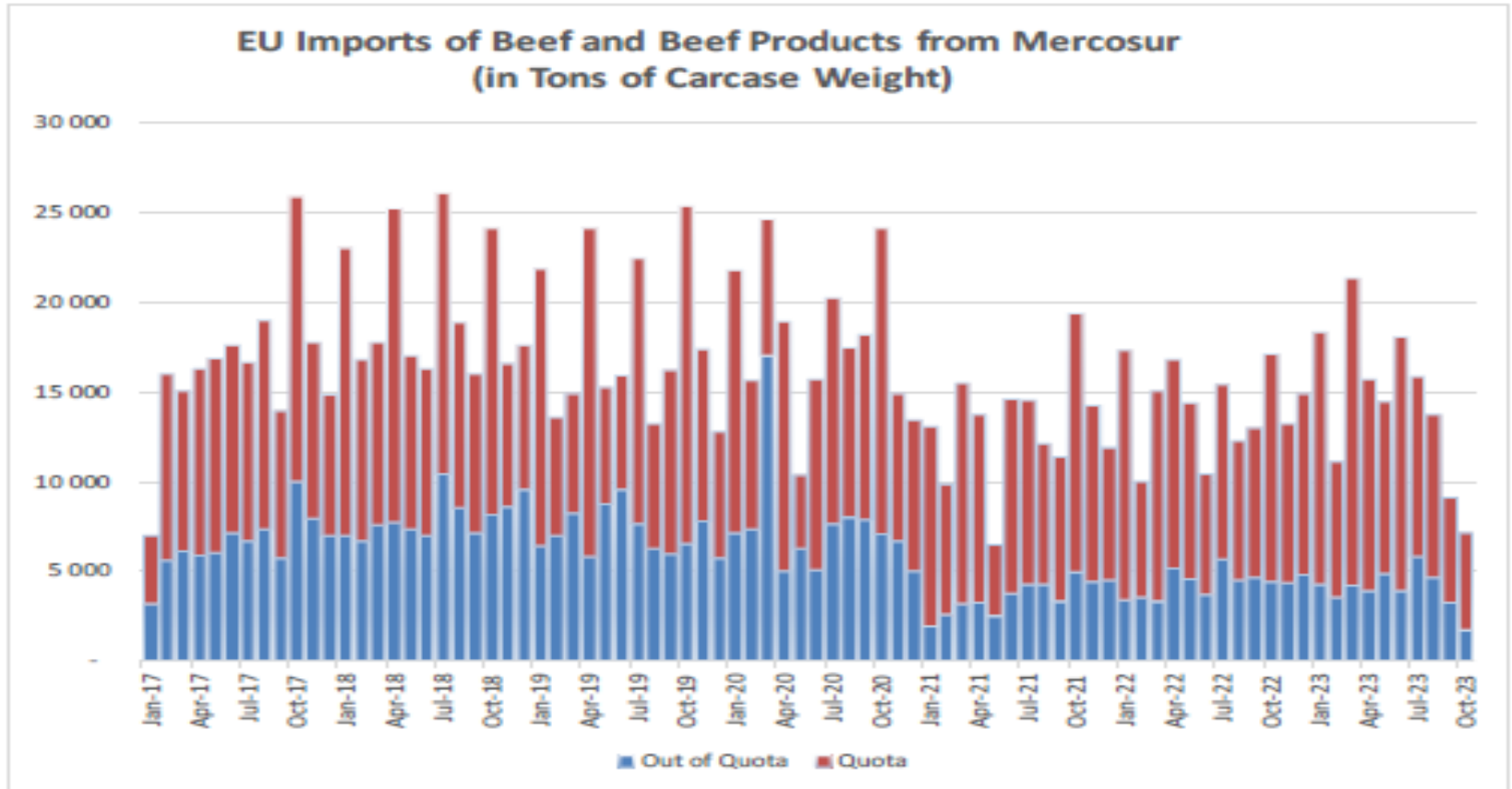
## Üçüncü Ülkelerden Sığır ve Sığır Eti Ürünleri İthalatları



# Tarife kotalarına giren ve çıkan ithalatlar



## Mercosur'dan AB Sığır ve Sığır Eti Ürünleri İthalatları (ton karkas ağırlığı)

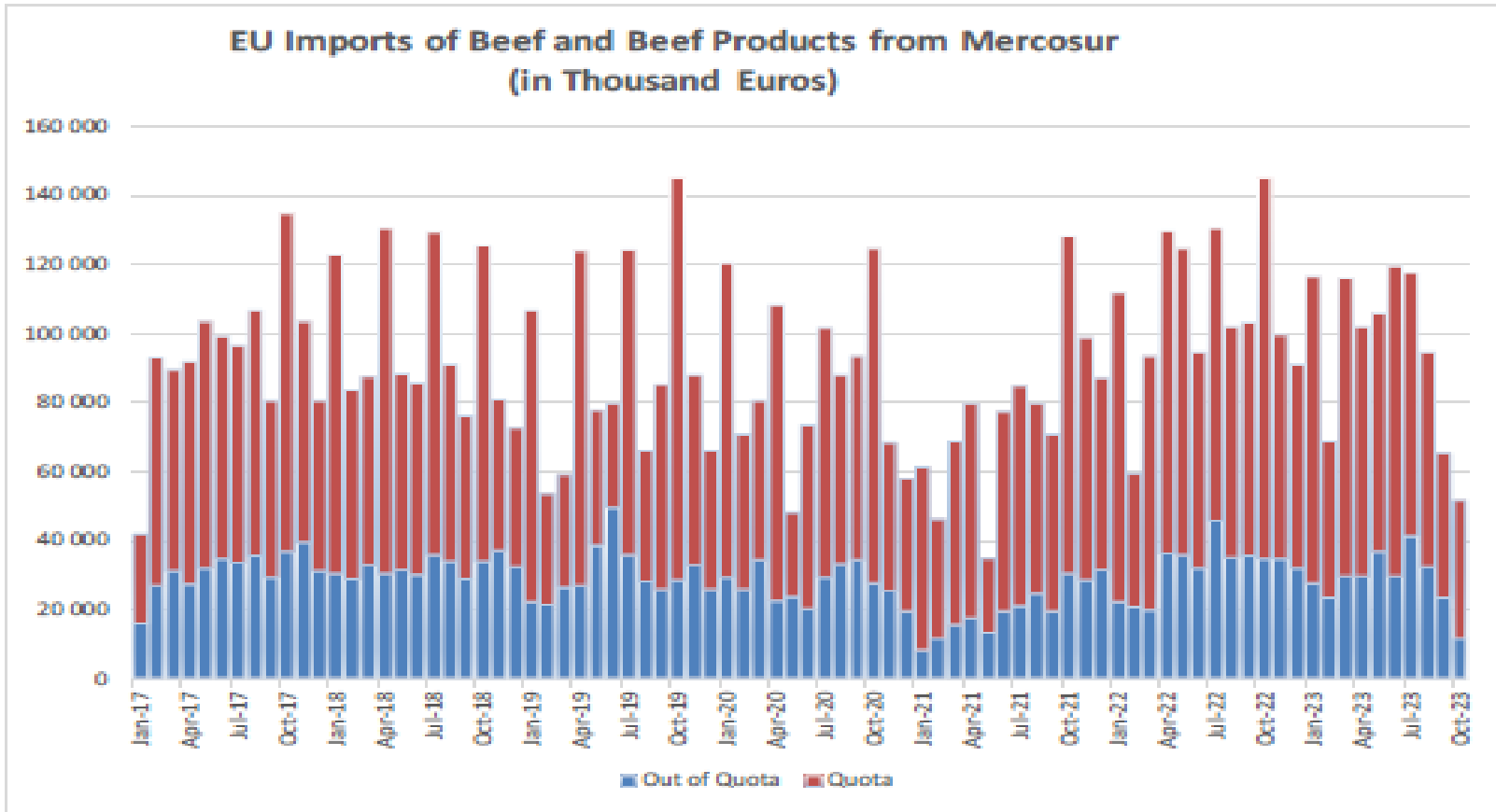




# Tarife kotalarına giren ve çıkan ithalatlar



## Mercosur'dan AB Sığır ve Sığır Eti Ürünleri İthalatları (Bin Euro)



# YÜKSEK KALİTE SİĞİR ETİ İTHALAT KOTALARI



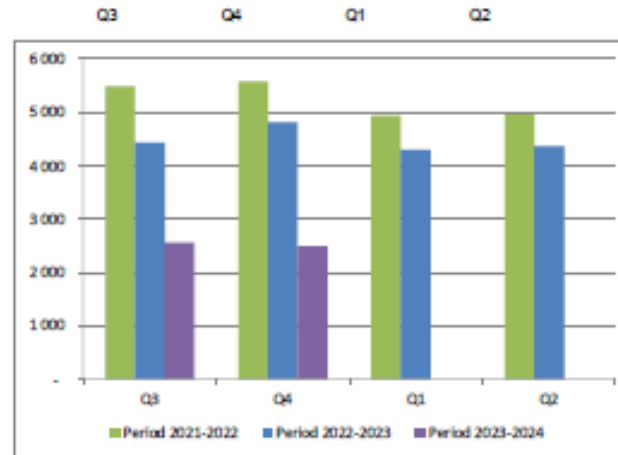
## High Quality Beef Import Quotas

Quota erga omnes

Regulation (EU) No 481/2012

	2021-Q3	2021-Q4	2022-Q1	2022-Q2	TOTAL
Period 2021-2022	5 502	5 587	4 938	4 956	20 983
Available	5 500	5 500	4 900	4 900	20 800
Use	100.00%	100.00%	100.00%	100.00%	100.88%
Available after transfer	5 500	5 498	4 813	4 862	
	100.00%	100.00%	100.00%	100.00%	
	2022-Q3	2022-Q4	2023-Q1	2023-Q2*	TOTAL
Period 2022-2023	4 436	4 811	4 902	4 372	17 922
Available	4 900	4 900	4 901	4 901	19 602
Use	90.53%	98.19%	87.78%	89.21%	91.43%
Available after transfer	4 900	4 900	4 901	4 901	
	90.53%	98.19%	87.78%	89.21%	
	2023-Q3	2023-Q4*	2024-Q1	2024-Q2	TOTAL
Period 2023-2024	2 553	2 480			5 032
Available	4 900	4 900			9 800
Use	52.10%	50.60%			51.35%
Available after transfer	4 900	4 900			
	52.10%	50.60%			

Origin



# YÜKSEK KALİTE SİĞİR ETİ İTHALAT KOTALARI



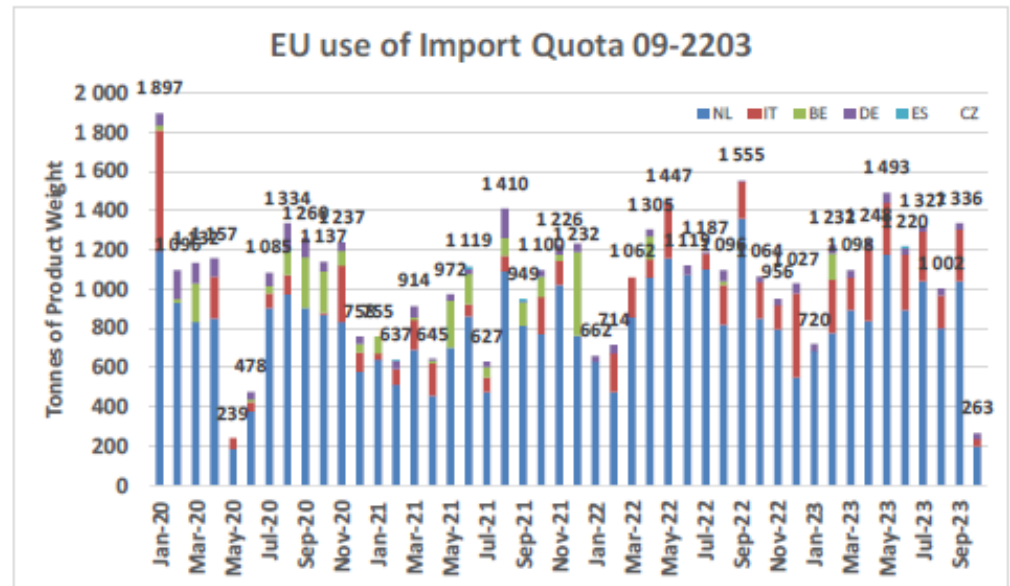
European Commission

## High Quality Beef Import Quotas

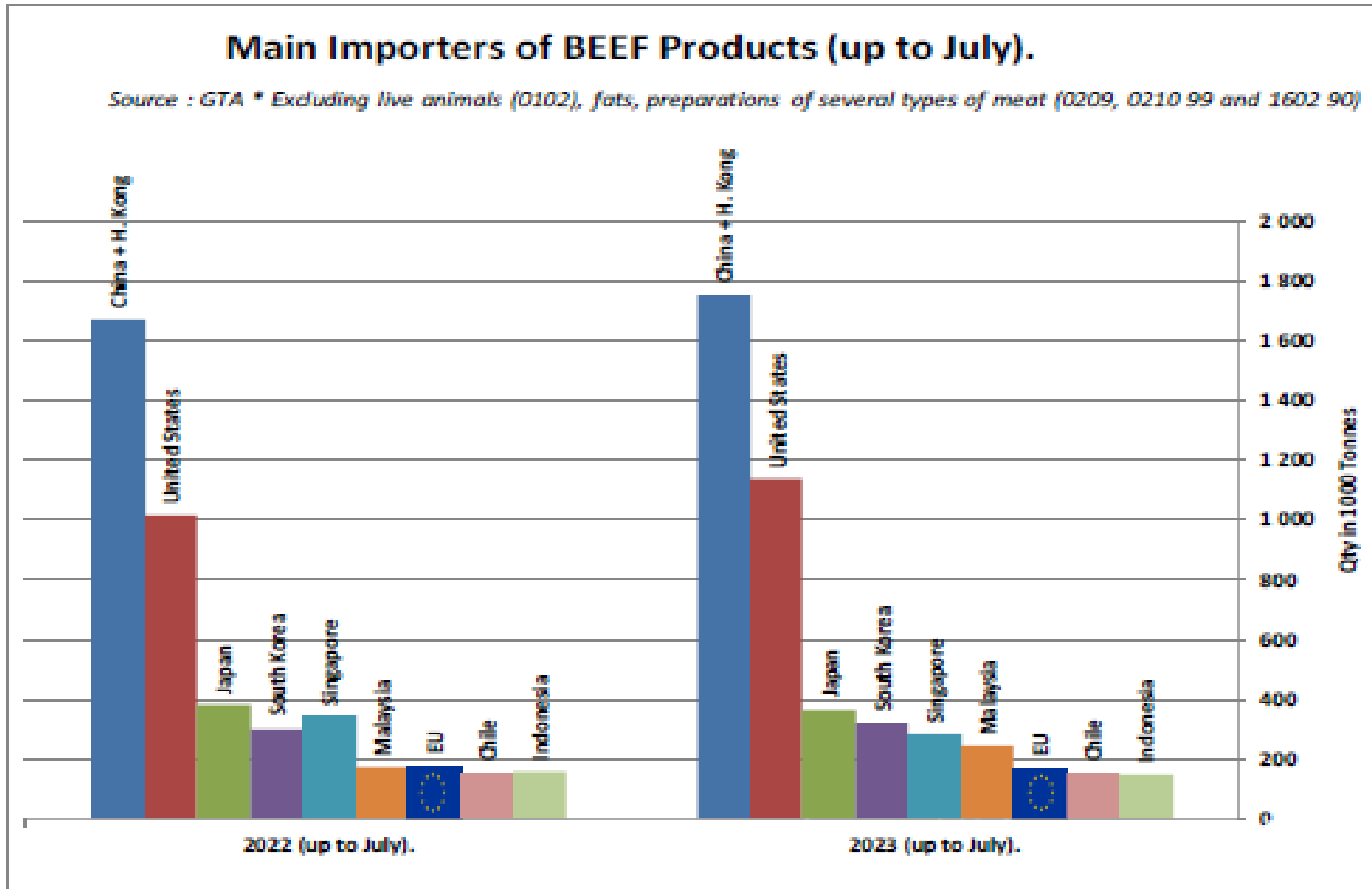
Origin	GATT 2022-2023				
	2022-Q3	2022-Q4	2023-Q1	2023-Q2	Total
NL	3 283	2 201	2 355	2 910	10 749
IT	473	730	436	922	2 561
BE	18	-	134	-	152
DE	64	109	116	113	403
ES	-	-	-	15	15
CZ	-	7	7	-	15
<b>Total import within Quota</b>	<b>3 838</b>	<b>3 047</b>	<b>3 049</b>	<b>3 961</b>	<b>13 895</b>
Available	6 350	6 350	6 350	6 350	25 400
Use	60.44%	47.99%	48.01%	62.37%	54.70%
After transfer		8 862	9 653	9 651	
Use		34.39%	31.59%	41.04%	

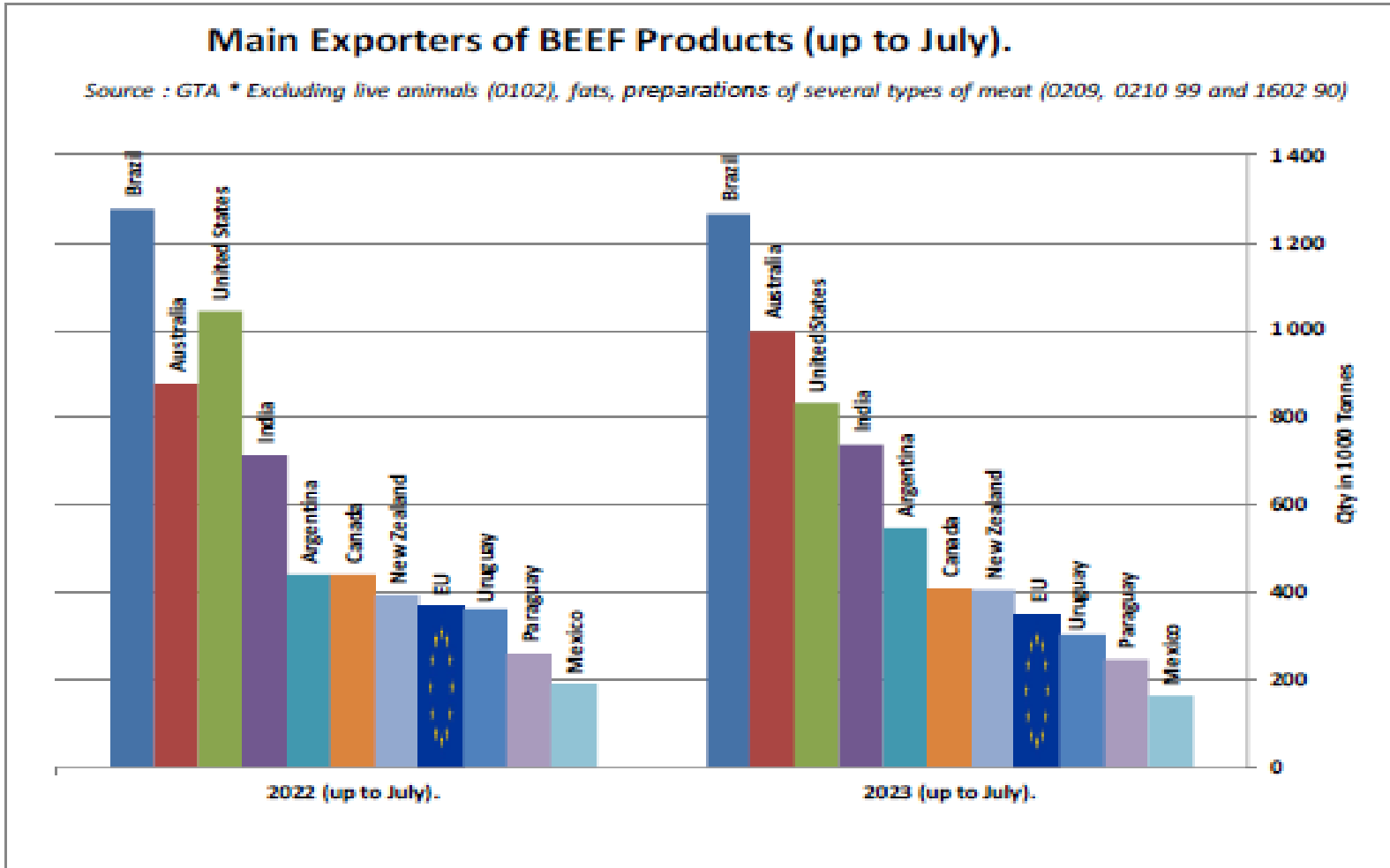
Origin	GATT 2023-2024				
	2023-Q3	2023-Q4	2024-Q1	2024-Q2	Total
NL	2 882	196			3 078
IT	686	38			723
BE	-	-			-
DE	96	30			126
ES	-	-			-
CZ	-	-			-
<b>Total import within Quota</b>	<b>3 664</b>	<b>263</b>	<b>-</b>	<b>-</b>	<b>3 927</b>
Available	6 950	6 950			13 900
Use	52.72%	3.79%			28.25%
After transfer		10 236			
Use		2.57%			



### Sığır Eti Ürünlerinin Net İthalatçıları (Temmuza Kadar)



## Siğir Eti Ürünlerinin Net İhracatçıları (Temmuza Kadar)



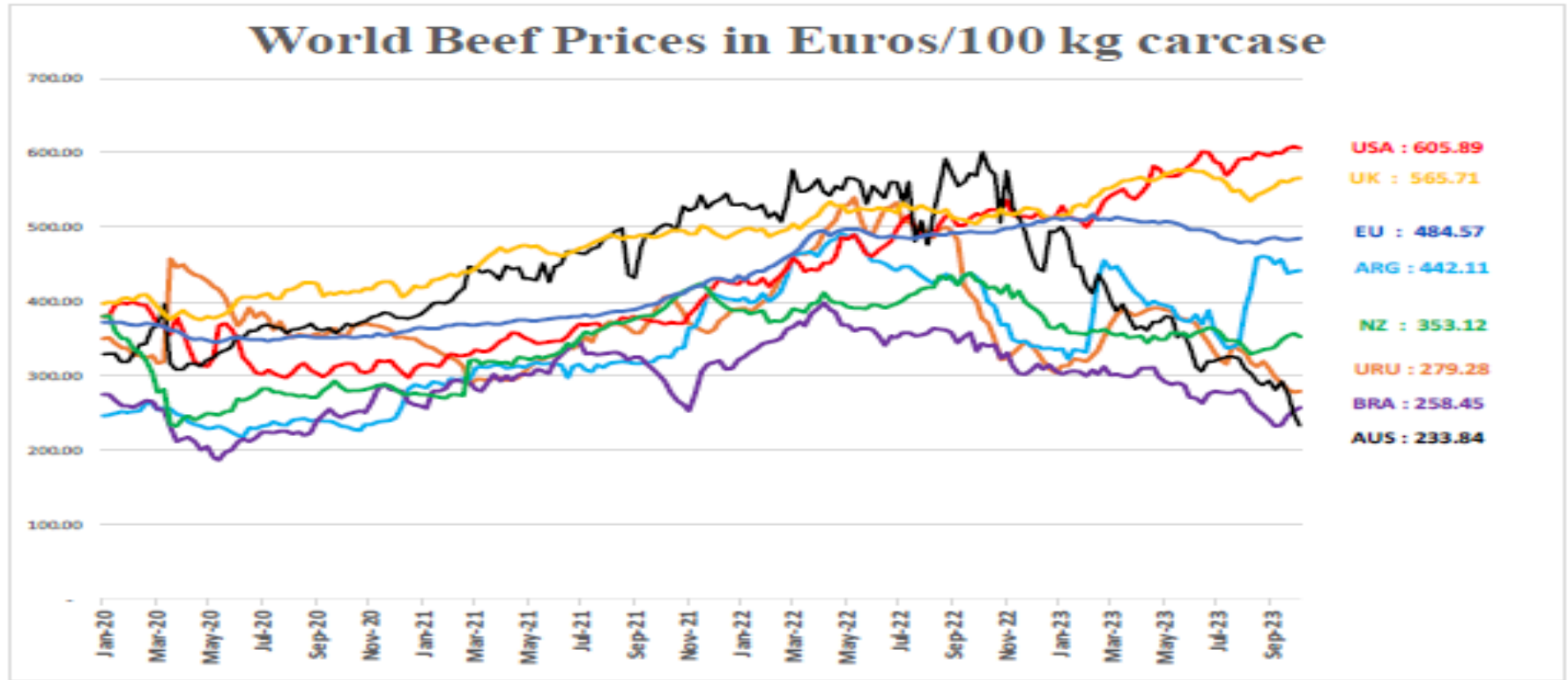
# DÜNYA SIĞIR ETİ PAZARI



European  
Commission

# Dünya Siğir Fiyatları AB, ABD, AVUSTRALYA, YENİ ZELANDA

## Dünya Siğir Eti Fiyatları – Euro / 100 kg karkas



USA, AUS, URU, ARG, NZ, BRA  
GB  
EU

[World Beef Report  
https://ahdb.org.uk/beef/go-desalweight-cattle-prices-by-region](https://ahdb.org.uk/beef/go-desalweight-cattle-prices-by-region)  
[Member States Communication](#)



## Çiftlik Yapısı Araştırması

LSU olarak kısaltılan (bazen ise LU olarak) hayvancılık birimi, başlangıçta her tür hayvanın beslenme ya da yem ihtiyacına dayanarak oluşturulan spesifik katsayıların kullanılmasıyla, konvansiyonel olarak hayvan türlerinin çeşitli tür ve yaşlardan toplanmasını kolaylaştıran bir referans birimidir. Çoğunlukla kullanılan katsayıların yer aldığı özet tablo aşağıdadır.

Hayvancılık birimlerinin hesaplanmasında kullanılan referans birimi, ek konsantre gıda maddeleri olmadan, yıllık 3.000 kg süt üreten bir yetişkin süt ineğinin otlatma eşdeğeridir.

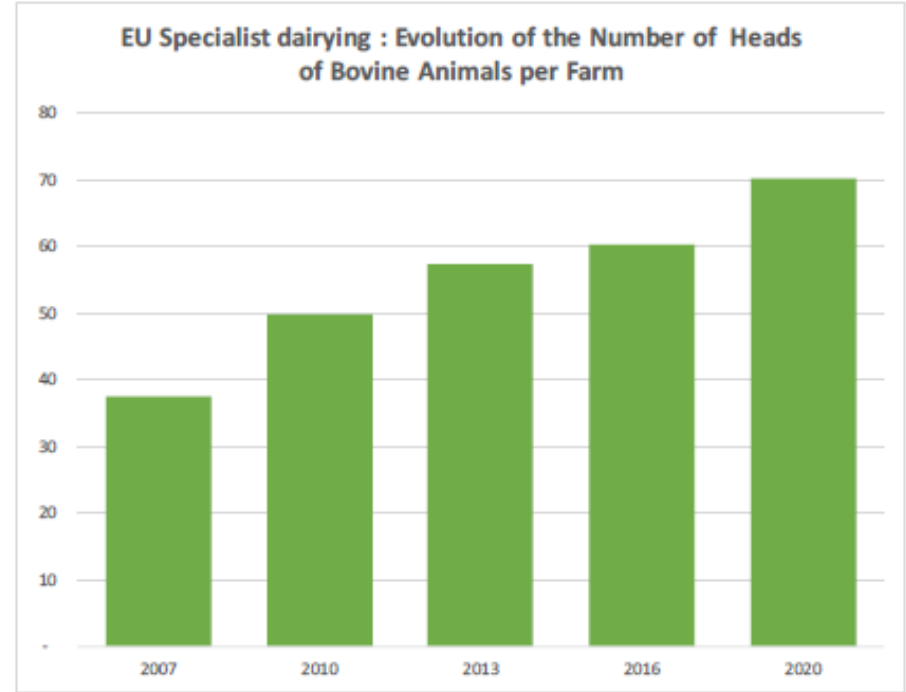
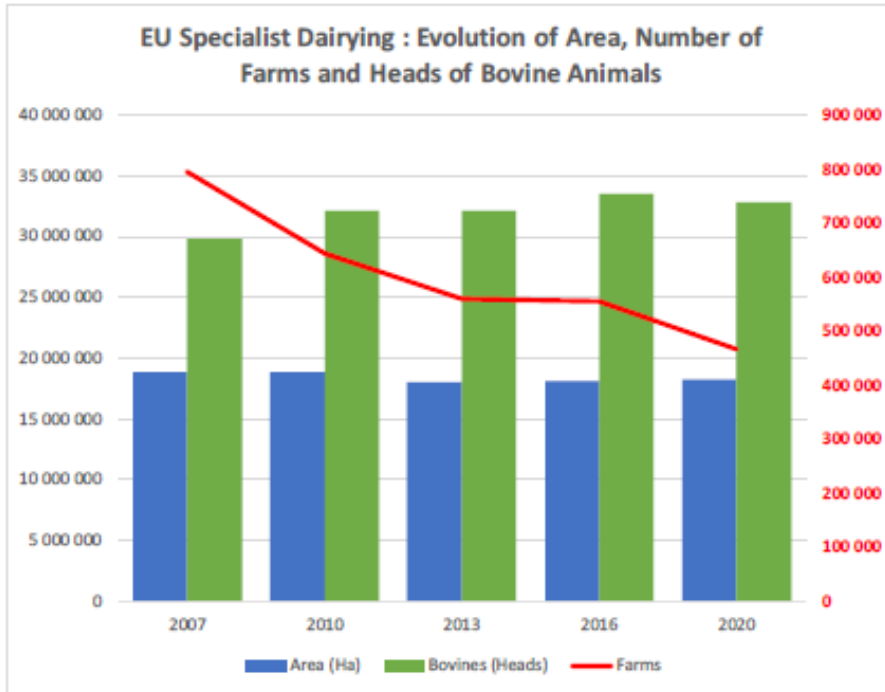
### Hayvancılık birim katsayıları

Büyükbaş	1 yaşın altında	0,400
	1 ancak 2 yaşından küçük	0,700
	Erkek, 2 yaşında ve daha büyük	1,000
	Düve, 2 yaşında ve daha büyük	0,800
	Süt inekleri	1,000
	Diğer inekler, 2 yaşında ve daha büyük	0,800



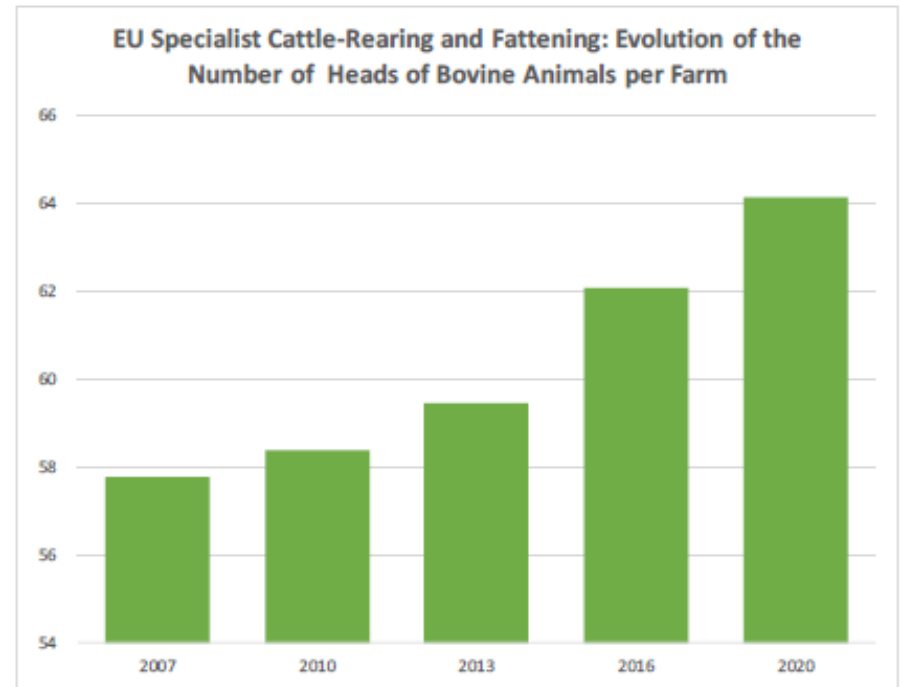
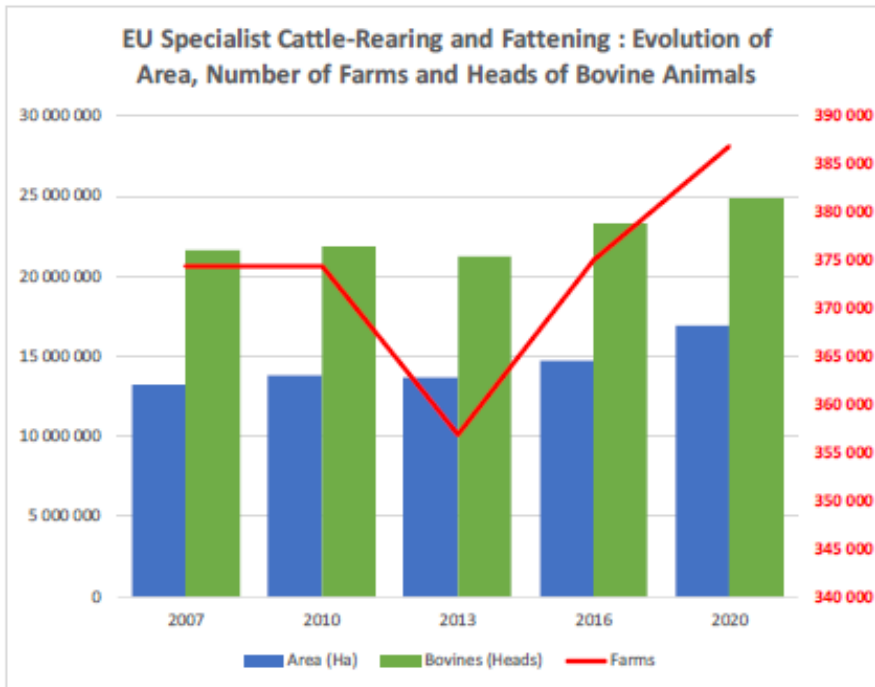
European  
Commission

# Çiftlik Yapısı Araştırması

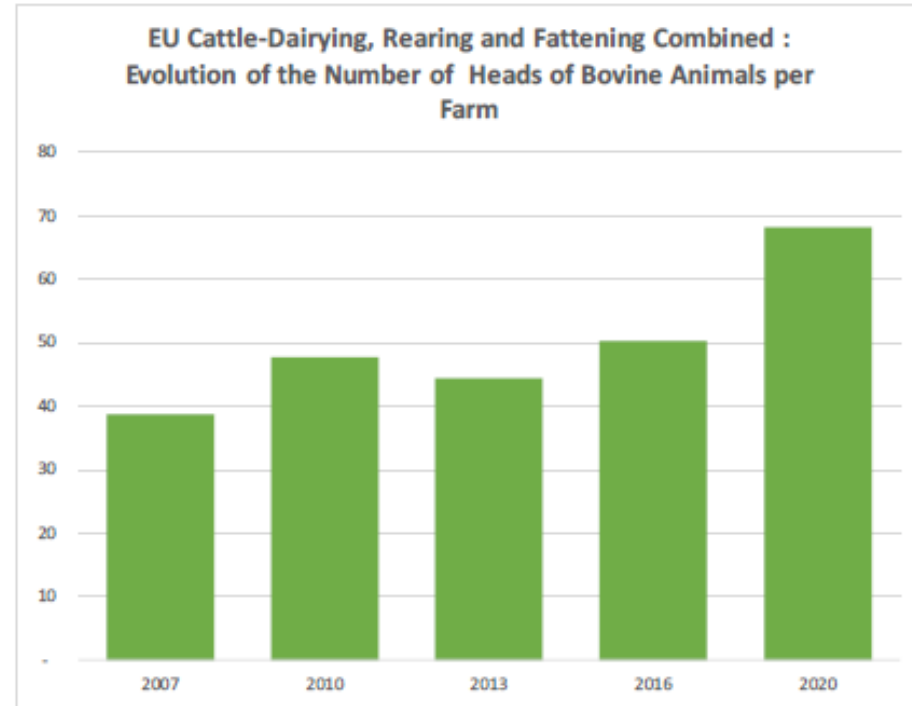
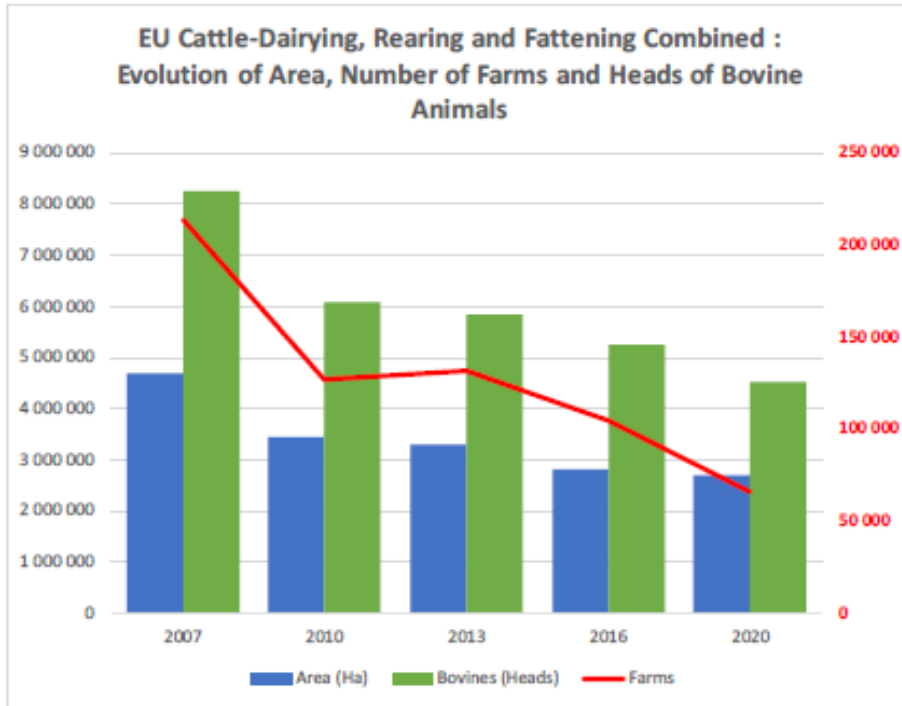




# Çiftlik Yapısı Araştırması

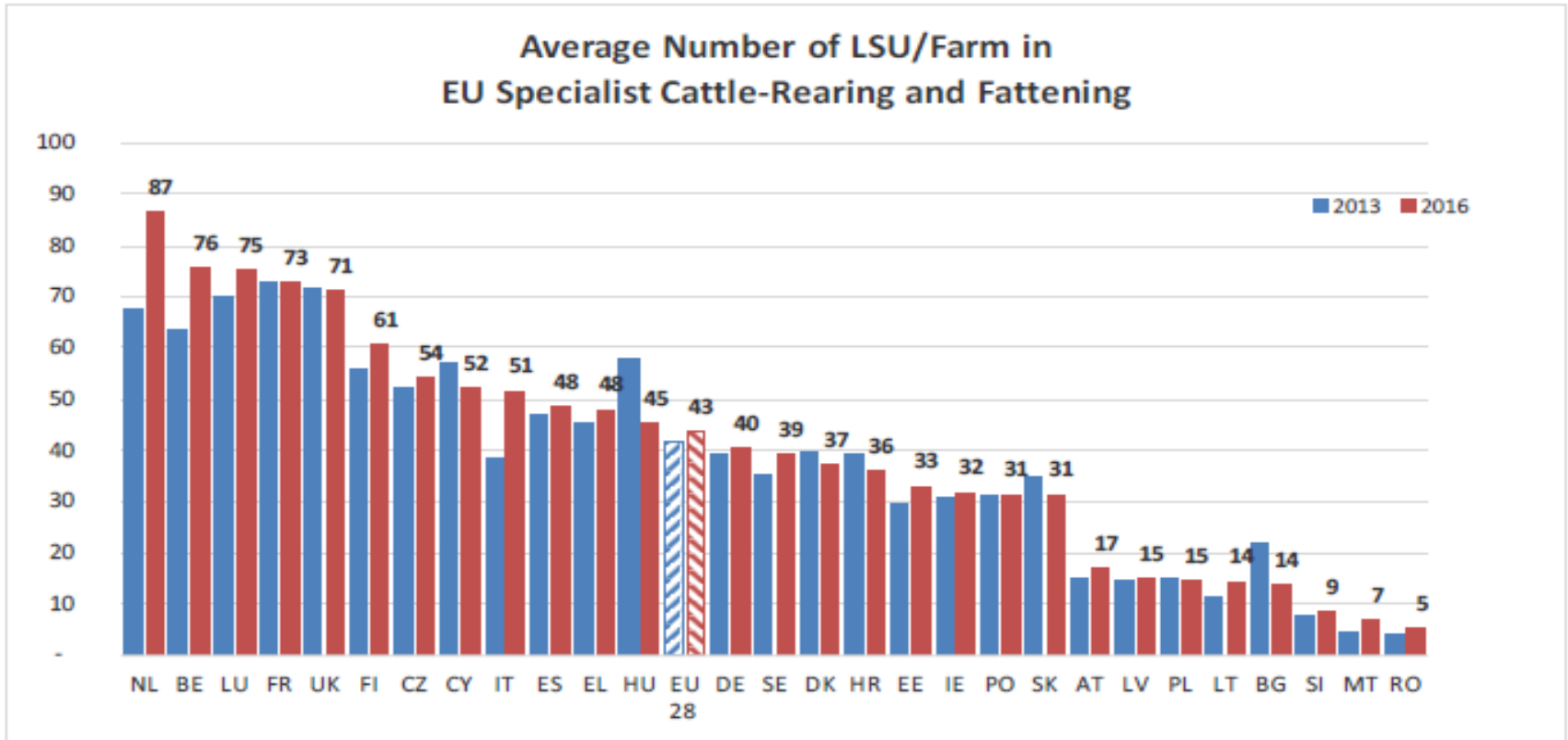


# Çiftlik Yapısı Araştırması



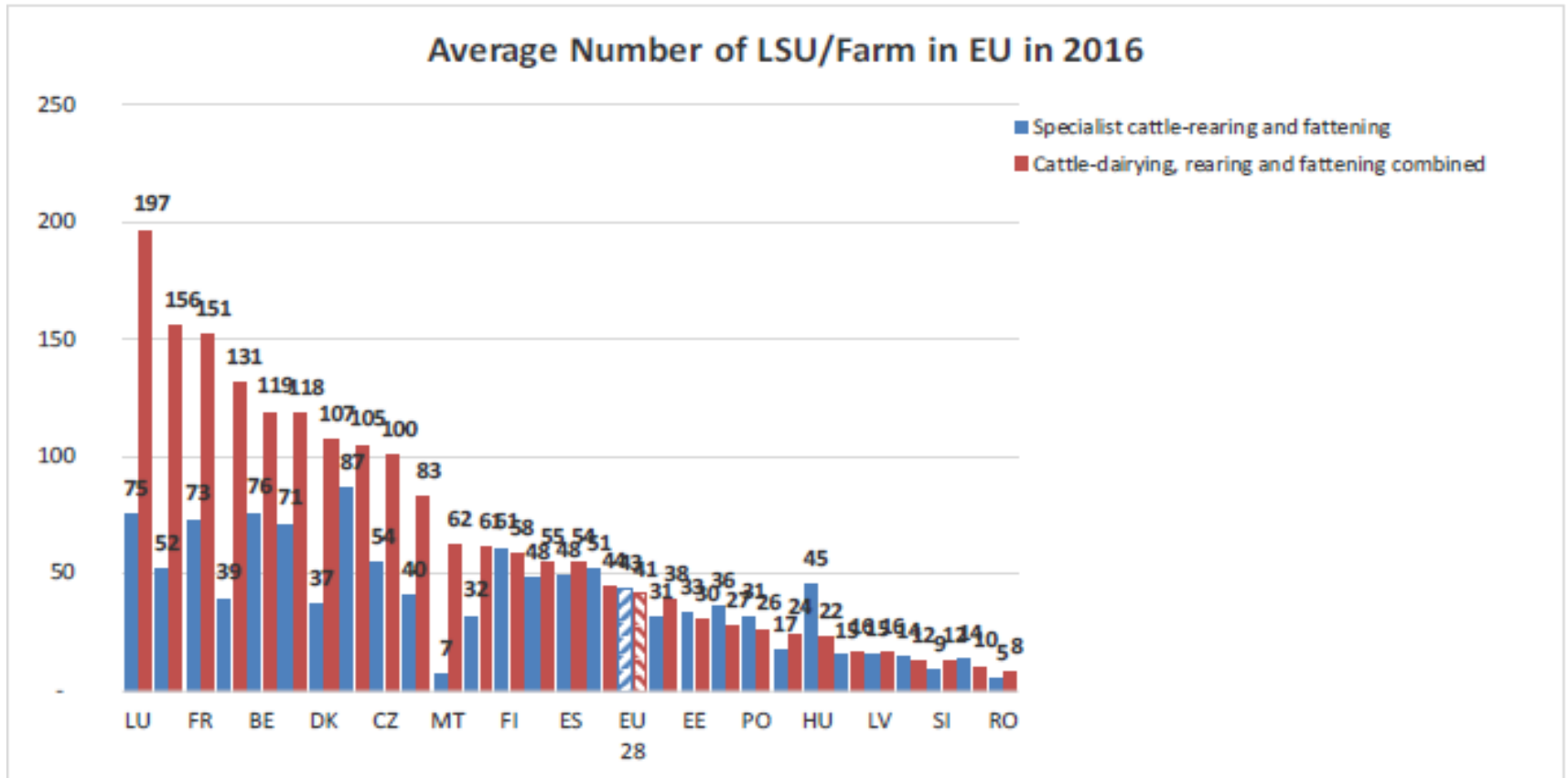
# Çiftlik Yapısı Araştırması

AB Uzman Büyükbaş Hayvan Yetiştirme ve Besi Yetiştiriciliğinde Ortalama LSU / Çiftlik Sayısı

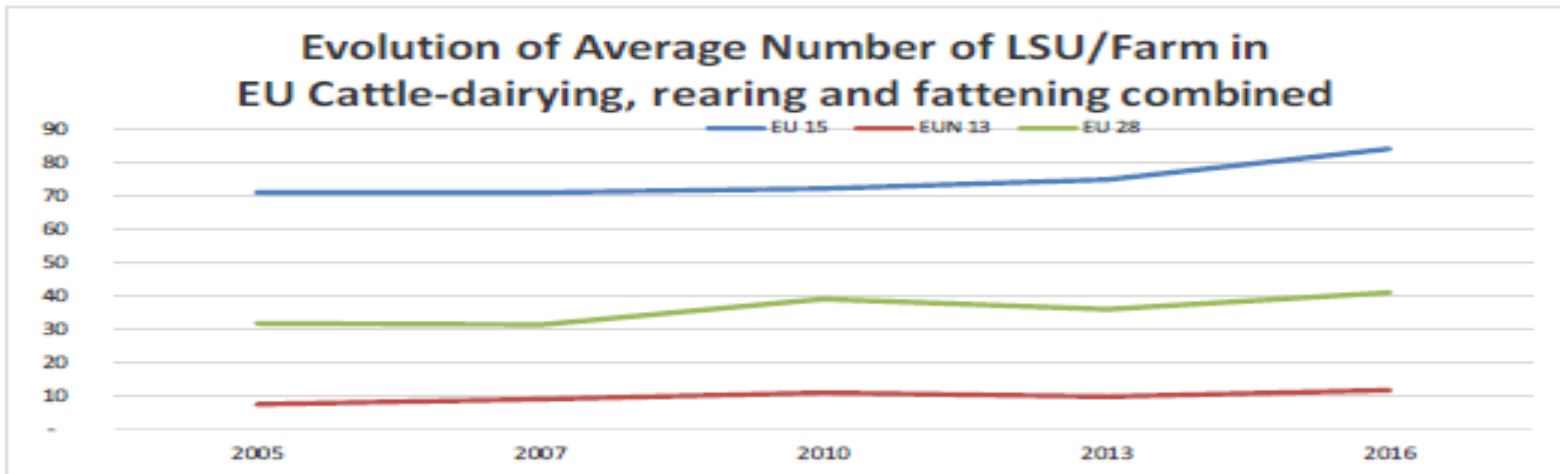
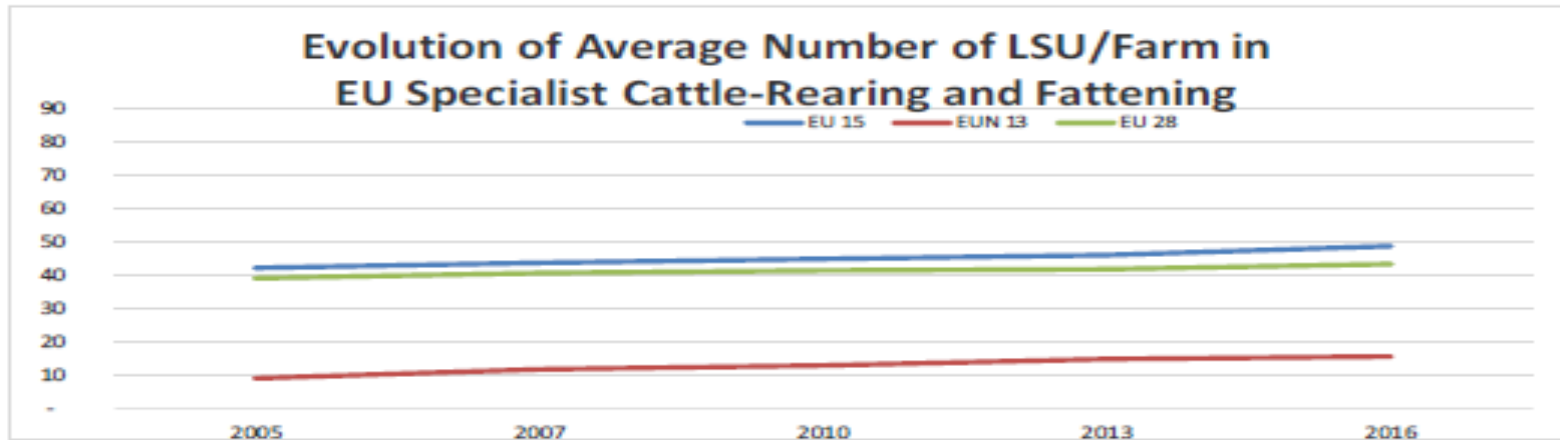


# Çiftlik Yapısı Araştırması

2016 yılında AB'de Ortalama LSU / Çiftlik Sayısı



## Çiftlik Yapısı Araştırması





**Daha fazla bilgi için:**

**[https://ec.europa.eu/agriculture/market-observatory/meat\\_en](https://ec.europa.eu/agriculture/market-observatory/meat_en)**

**Ve Agri-FOOD Veri Portalı:**

**<http://agridata.ec.europa.eu>**