



AB SIĞIR VE DANA ETİ PAZAR DURUMU

20 Nisan 2023

LIVESTOCK

DECEMBER SURVEY

EU EVOLUTION

TOTAL BOVINE

Dec	TOTAL LIVESTOCK				%Var	Dec	BOVINE < 1 Year				%Var	Dec	BOVINE 1-2 Year				%Var	Dec	BOVINE > 2 Year				%Var	
	1000 Hd	2019	2020	2021	2022		2022	2021	2019	2020	2021		2022	2022	2021	2019	2020		2021	2022	2022	2021	2019	2020
BE	2 373	2 335	2 310	2 286	-1.1%	722	712	713	694	-2.7%	464	461	454	454	-0.0%	1 188	1 163	1 143	1 138	-0.5%				
BG	527	589	611	579	-5.2%	100	112	121	108	-11.3%	58	71	67	69	+3.4%	369	406	423	402	-4.8%				
CZ	1 367	1 340	1 359	1 390	+2.3%	411	405	408	407	-0.4%	299	295	296	314	+6.1%	657	640	655	669	+2.2%				
DK	1 500	1 500	1 480	1 466	-0.9%	522	524	516	510	-1.2%	280	279	280	281	+0.4%	698	697	684	675	-1.3%				
DE	11 640	11 302	11 040	10 997	-0.4%	3 485	3 405	3 355	3 308	-1.4%	2 751	2 639	2 569	2 600	+1.2%	5 403	5 258	5 116	5 089	-0.5%				
EE	254	253	251	250	-0.5%	71	72	69	69	+0.3%	50	49	51	49	-3.7%	133	132	131	132	+0.4%				
IE	6 560	6 529	6 649	6 552	-1.5%	1 962	2 057	2 108	1 995	-5.3%	1 741	1 708	1 775	1 810	+2.0%	2 856	2 765	2 766	2 746	-0.7%				
EL	530	632	614	607	-1.2%	157	162	176	170	-3.5%	91	145	114	122	+7.7%	283	325	324	314	-3.0%				
ES	6 600	6 636	6 576	6 456	-1.8%	2 529	2 541	2 319	2 487	+7.2%	857	853	1 016	786	-22.6%	3 214	3 242	3 240	3 182	-1.8%				
FR	18 173	17 816	17 330	16 986	-2.0%	5 125	5 119	4 945	4 868	-1.6%	3 183	3 063	3 021	2 992	-1.0%	9 865	9 634	9 364	9 127	-2.5%				
HR	420	423	428	422	-1.4%	151	146	156	149	-4.5%	107	111	107	112	+4.7%	162	166	165	161	-2.4%				
IT	6 377	6 400	6 280	6 049	-3.7%	1 759	1 774	1 722	1 563	-9.2%	1 588	1 595	1 562	1 520	-2.7%	3 030	3 031	2 997	2 966	-1.0%				
CY	74	83	85	81	-3.7%	25	27	27	25	-7.4%	12	14	15	15	-2.8%	38	42	43	42	-1.8%				
LV	395	399	393	391	-0.5%	108	112	107	107	+0.4%	65	65	68	66	-3.3%	222	222	219	219	-0.1%				
LT	635	630	629	642	+2.1%	167	169	166	173	+4.5%	132	129	135	130	-3.7%	336	332	328	339	+3.3%				
LU	192	191	187	186	-0.6%	50	50	49	48	-2.1%	41	41	40	41	+0.1%	101	100	98	98	-0.1%				
HU	909	933	910	894	-1.7%	258	266	269	258	-4.2%	193	195	153	159	+3.6%	458	472	487	477	-2.1%				
MT	14	14	14	14	+1.3%	4	4	4	4	+1.6%	3	3	3	3	-3.3%	7	7	7	7	+3.3%				
NL	3 721	3 691	3 705	3 751	+1.2%	1 528	1 510	1 519	1 536	+1.1%	440	465	482	496	+2.9%	1 752	1 716	1 704	1 719	+0.9%				
AT	1 880	1 855	1 870	1 861	-0.5%	605	599	611	597	-2.3%	426	414	421	430	+2.1%	848	842	838	834	-0.5%				
PL	6 262	6 279	6 379	6 448	+1.1%	1 748	1 735	1 802	1 929	+7.0%	1 757	1 800	1 915	1 699	-11.3%	2 758	2 744	2 662	2 821	+6.0%				
PT	1 675	1 691	1 641	1 617	-1.4%	531	526	528	433	-18.0%	240	257	214	266	+24.0%	903	909	899	919	+2.2%				
RO	1 923	1 875	1 827	1 825	-0.1%	400	369	347	346	-0.4%	223	225	222	222	+0.0%	1 300	1 281	1 258	1 258	-0.0%				
SI	483	486	483	465	-3.7%	151	153	157	149	-4.9%	136	133	131	130	-0.6%	197	199	195	186	-4.8%				
SK	432	442	434	426	-1.8%	122	126	125	122	-2.1%	83	87	82	82	-0.3%	227	229	228	222	-2.3%				
FI	841	835	830	822	-1.0%	287	292	287	283	-1.3%	205	199	205	203	-1.1%	349	344	338	336	-0.6%				
SE	1 405	1 391	1 390	1 391	+0.0%	453	464	460	461	+0.2%	339	323	334	333	-0.4%	613	603	596	597	+0.2%				
EU	77 161	76 551	75 705	74 856	-1.1%	23 431	23 428	23 065	22 798	-1.2%	15 764	15 621	15 732	15 382	-2.2%	37 966	37 503	36 908	36 675	-0.6%				
UK	9 459					2 860					2 335				4 264									

LIVESTOCK

DECEMBER SURVEY

Dec	TOTAL COWS				%Var 2022 2021	DAIRY COWS				%Var 2022 2021	OTHER COWS				%Var 2022 2021
	1000 Hd	2019	2020	2021		2022	2019	2020	2021		2022	2019	2020	2021	
BE	939	921	917	913	-0.4%	538	538	537	544	+1.2%	401	383	379	370	-2.6%
BG	343	382	397	377	-5.1%	227	242	230	213	-7.7%	116	140	166	164	-1.5%
CZ	570	560	574	579	+0.9%	361	357	362	357	-1.6%	209	203	212	223	+5.2%
DK	645	646	635	627	-1.3%	563	565	559	556	-0.6%	83	80	76	70	-7.9%
DE	4 651	4 548	4 445	4 420	-0.6%	4 012	3 921	3 833	3 810	-0.6%	640	626	612	610	-0.3%
EE	116	116	115	115	-0.4%	85	84	84	84	+0.1%	31	32	31	31	-1.6%
IE	2 383	2 379	2 395	2 372	-1.0%	1 426	1 456	1 505	1 510	+0.3%	957	923	890	862	-3.1%
EL	242	210	213	207	-3.0%	86	90	91	88	-3.6%	156	120	122	119	-2.5%
ES	2 881	2 909	2 900	2 889	-0.4%	813	811	809	810	+0.2%	2 068	2 099	2 091	2 079	-0.6%
FR	7 505	7 379	7 204	7 020	-2.6%	3 491	3 406	3 322	3 231	-2.7%	4 014	3 974	3 882	3 790	-2.4%
HR	142	144	142	138	-2.8%	130	110	102	79	-22.5%	12	34	40	59	+47.5%
IT	2 237	2 243	2 193	2 348	+7.1%	1 876	1 871	1 844	1 865	+1.1%	362	372	349	483	+38.6%
CY	35	40	40	38	-3.5%	35	39	39	38	-1.6%	0	0	1	0	-100.0%
LV	195	196	193	191	-1.0%	138	136	131	128	-2.6%	56	60	61	63	+2.4%
LT	299	295	290	291	+0.4%	241	233	225	224	-0.5%	58	62	65	67	+3.4%
LU	79	78	78	77	-0.5%	54	54	55	55	+1.4%	25	24	23	22	-4.9%
HU	412	414	423	421	-0.4%	243	247	261	278	+1.1%	169	167	142	143	+0.8%
MT	6	6	6	6	+3.4%	6	6	6	6	+4.3%	0	0	0	0	-13.6%
NL	1 633	1 612	1 599	1 614	+0.9%	1 590	1 569	1 554	1 570	+1.0%	43	43	45	44	-2.2%
AT	720	715	712	708	-0.5%	524	525	526	551	+4.6%	195	191	186	158	-15.0%
PL	2 406	2 391	2 289	2 172	-5.1%	2 167	2 126	2 035	2 037	+0.1%	239	266	254	135	-47.0%
PT	731	739	739	726	-1.8%	234	233	230	224	-2.5%	497	507	509	502	-1.4%
RO	1 166	1 145	1 116	1 115	-0.1%	1 139	1 122	1 082	1 081	-0.1%	27	23	34	34	+0.6%
SI	166	167	165	157	-4.8%	101	99	101	93	-7.6%	65	68	65	64	-0.4%
SK	192	192	191	188	-1.7%	126	122	120	116	-3.4%	66	69	71	72	+1.2%
FI	318	316	311	306	-1.4%	259	256	249	243	-2.2%	59	61	62	63	+2.0%
SE	500	499	497	496	-0.1%	301	304	300	298	-0.6%	198	194	197	199	+0.7%
EU	31 513	31 241	30 778	30 512	-0.9%	20 766	20 522	20 213	20 088	-0.6%	10 748	10 718	10 565	10 424	-1.3%
UK	3 337					1 867					1 470				

Source: EStat Newcronos

EU %Var is calculated considering only countries available in 2021 AND 2022

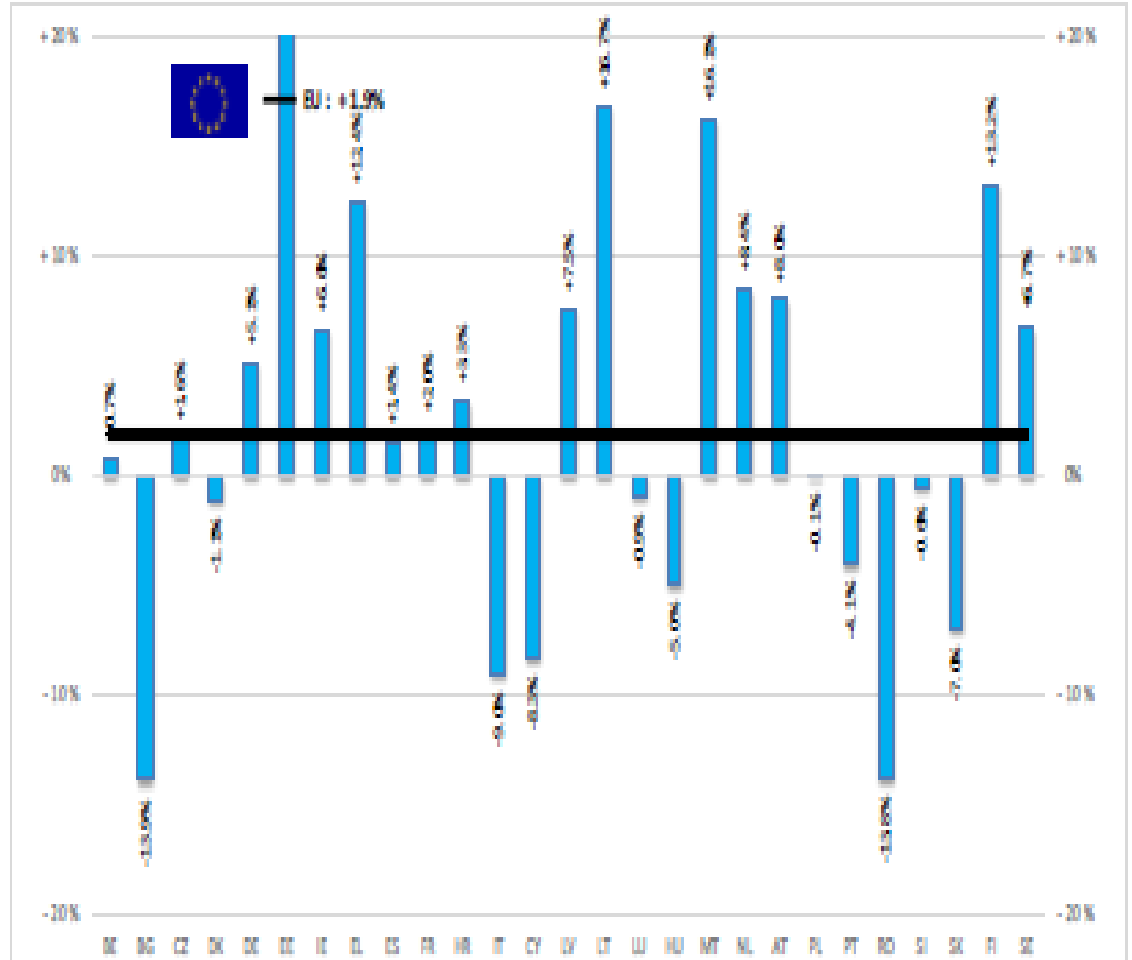




European
Commission

BAŞ	HEADS	Jan-Jan 23/22
		EU
BOĞA	Bull	+1.3%
ÖKÜZ	Bullock	+4.0%
İNEK	Cow	+4.5%
DÜVE	Heifer	+1.3%
BUZAĞI	Calve	-0.1%
GENÇ SİĞİR	Young cattle	-0.9%
Büyükbaş Hayvan Eti	Meat of bovine animals	+1.9%

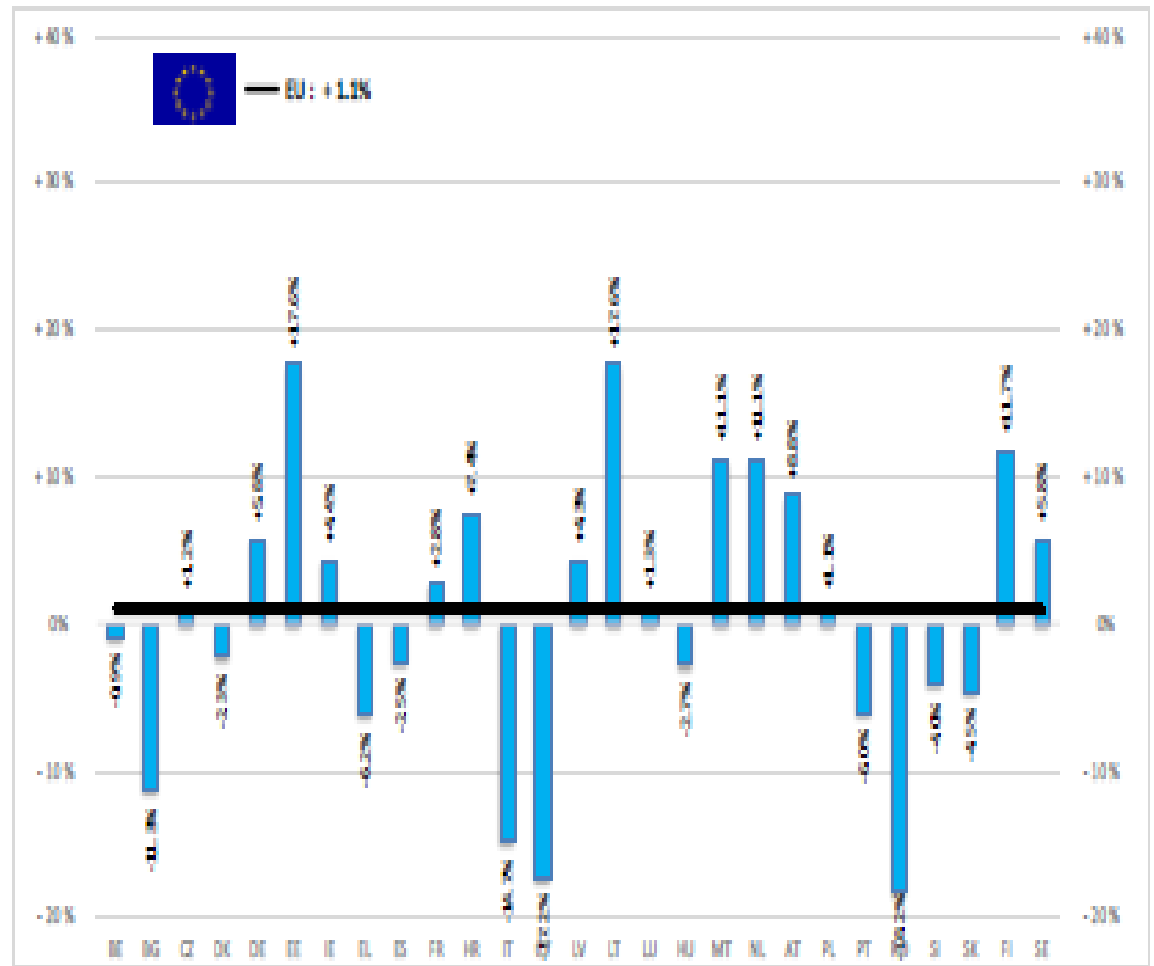
Estimates for last month of period :



Source : Euro-Newsroom

TON	TONNES	Jan-Jan 23/22
		EU
BOĞA	Bull	+0.4%
ÖKÜZ	Bullock	+1.8%
İNEK	Cow	+4.0%
DÜVE	Heifer	-1.0%
BUZAĞI	Calve	-0.7%
GENÇ SİĞİR	Young cattle	-0.5%
Büyükbaş Hayvan Eti	Meat of bovine animals	+1.1%

Estimates for last month of period :

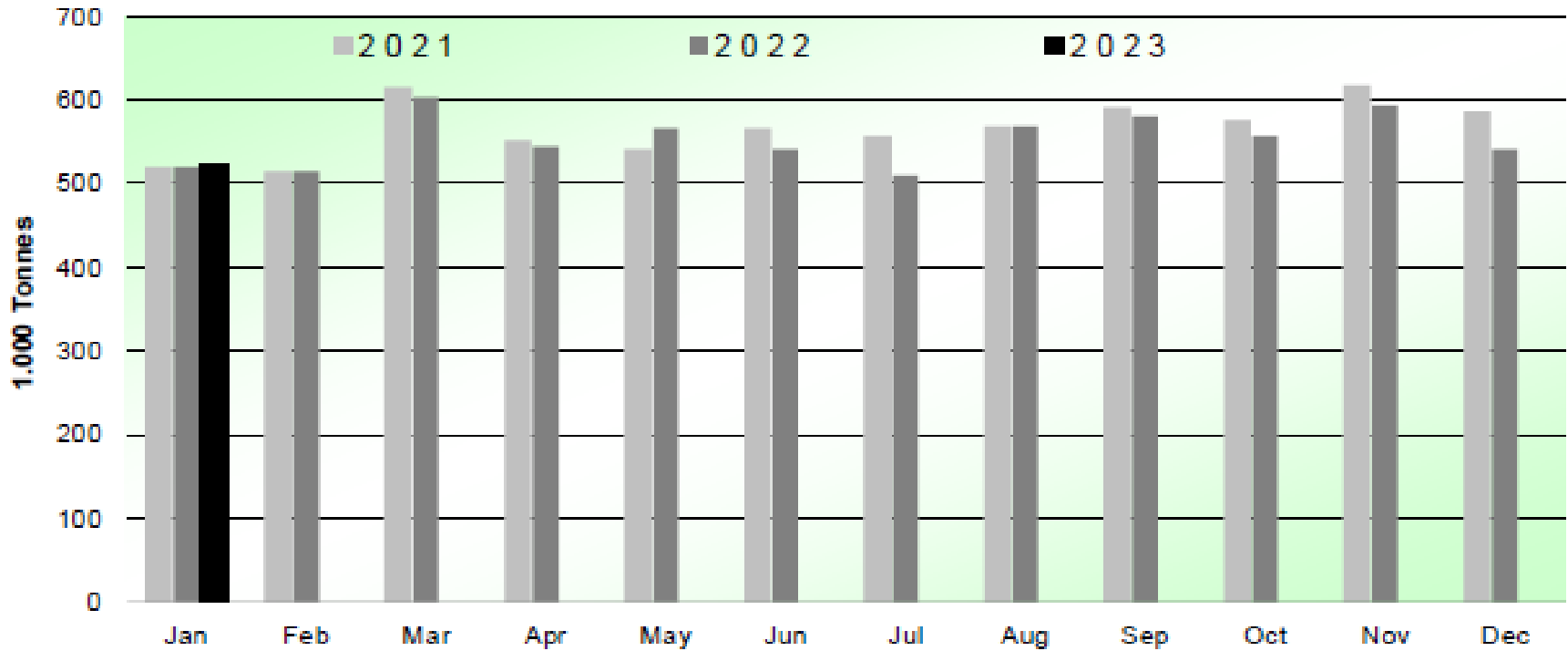


Source : Ecolat - Newcronos



SIĞIR VE DANA ETİ ÜRETİMİ (AB Kesimler – Ton)

Beef & Veal Production (EU Slaughtering) - Tonnes



Source: EStat-Newcronos



EU Prices week		14	Evolution since last week	Evolution since last month	Evolution since last year
Carcasse	Average A/C/Z -R3	507.1	- 0.4%	- 1.4%	+ 2.4%
	Young Bovines (Z)	519.1	+ 1.0%	+ 1.5%	+ 11.0%
	Young Bulls (A)	497.7	- 1.0%	- 2.5%	- 1.2%
	Steers (C)	541.8	+ 0.2%	+ 0.6%	+ 11.1%
	Cows (D)	432.0	- 0.6%	- 0.3%	- 4.6%
	Heifers (E)	519.6	- 0.7%	- 1.4%	+ 4.3%
	Calves slaughtered <8M	650.2	- 0.9%	- 0.3%	+ 8.3%
Live Animals	Male Calves Dairy Type	123.2	+ 2.7%	+ 10.6%	+ 13.1%
	Male Calves Beef Type	252.5	+ 1.0%	+ 3.7%	+ 9.0%
	Young Store Cattle	3.34	+ 0.0%	+ 0.5%	+ 10.8%
	Yearling Male Store Cattle	3.51	- 0.4%	+ 2.5%	- 12.7%
	Yearling Female Store Cattle	2.91	+ 0.2%	+ 1.4%	- 2.0%

Sources : MSs notifications (Regulation (EU) 1182/2017 and 1184/2017)

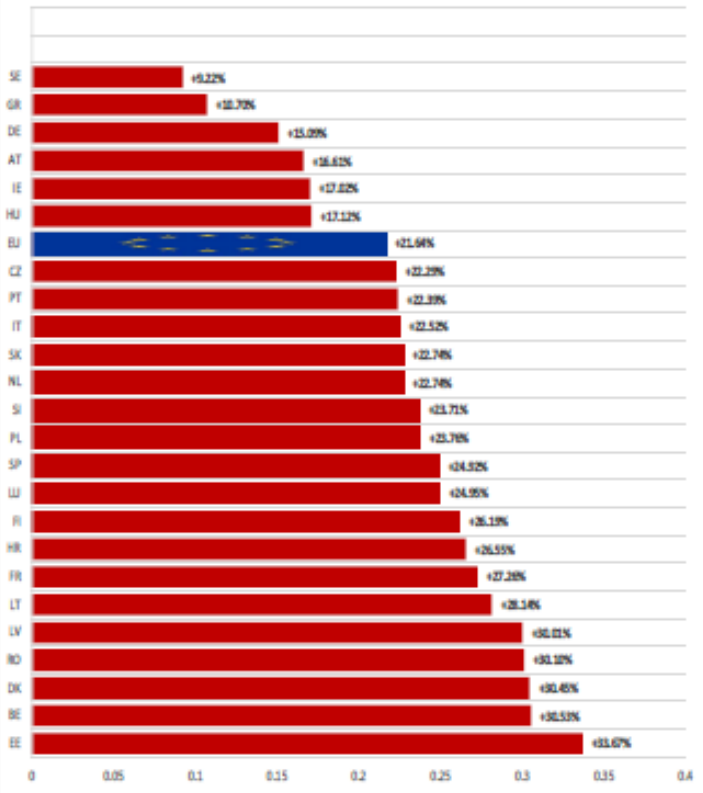
KARKAS FİYATLARI



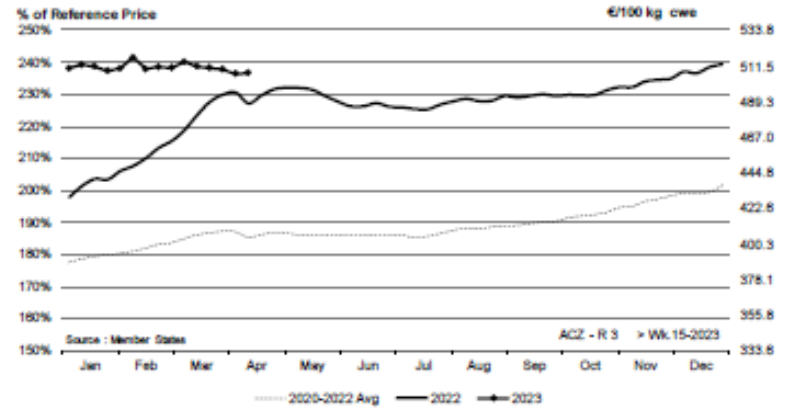
European Commission

AB DEĞİŞİM A/C/Z. R3

EU ACZ R3 Price Comparison between average monthly price April 2022 - March 2023 compared to April 2021 - March 2022

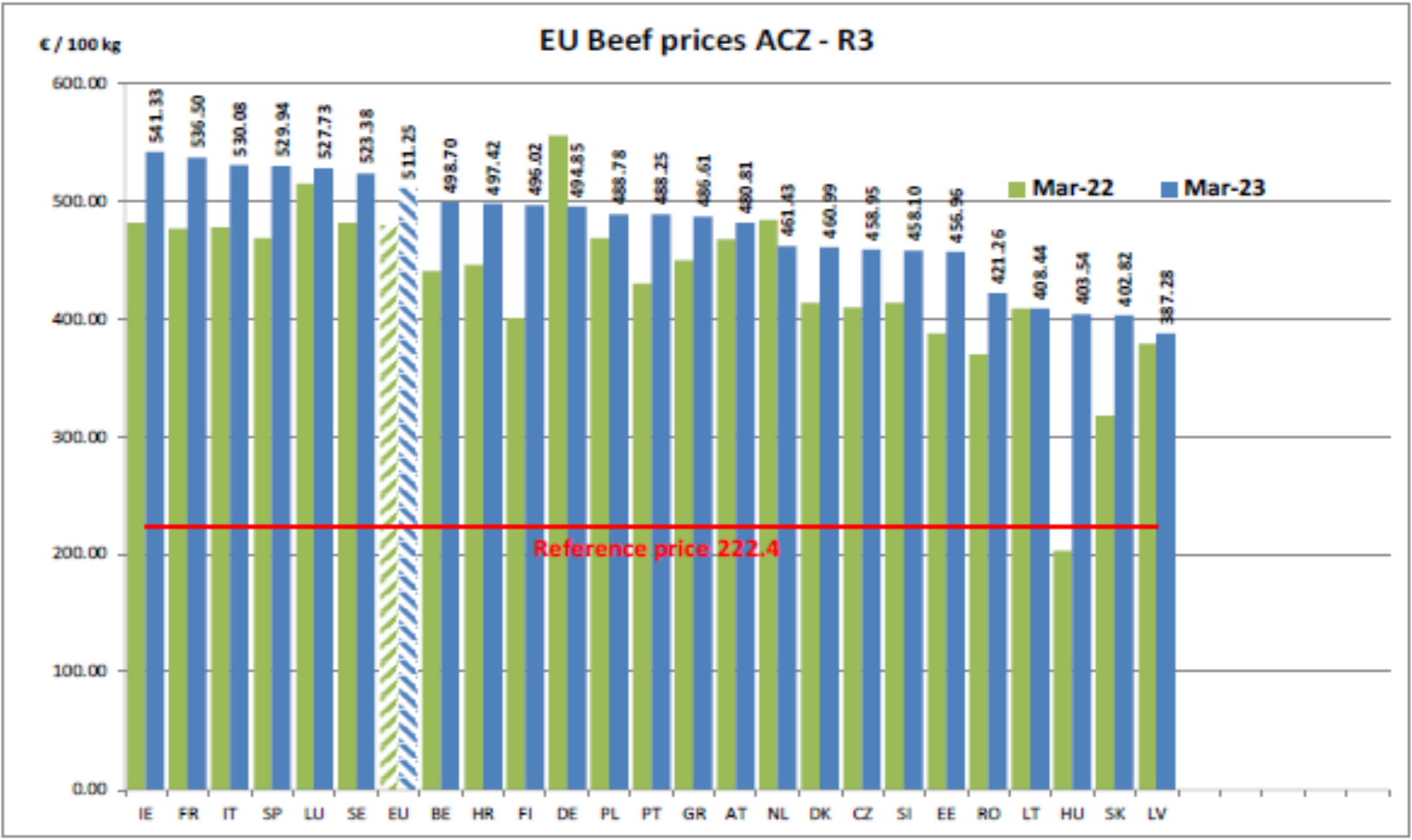


ACZ - R 3 > Wk.15-2023



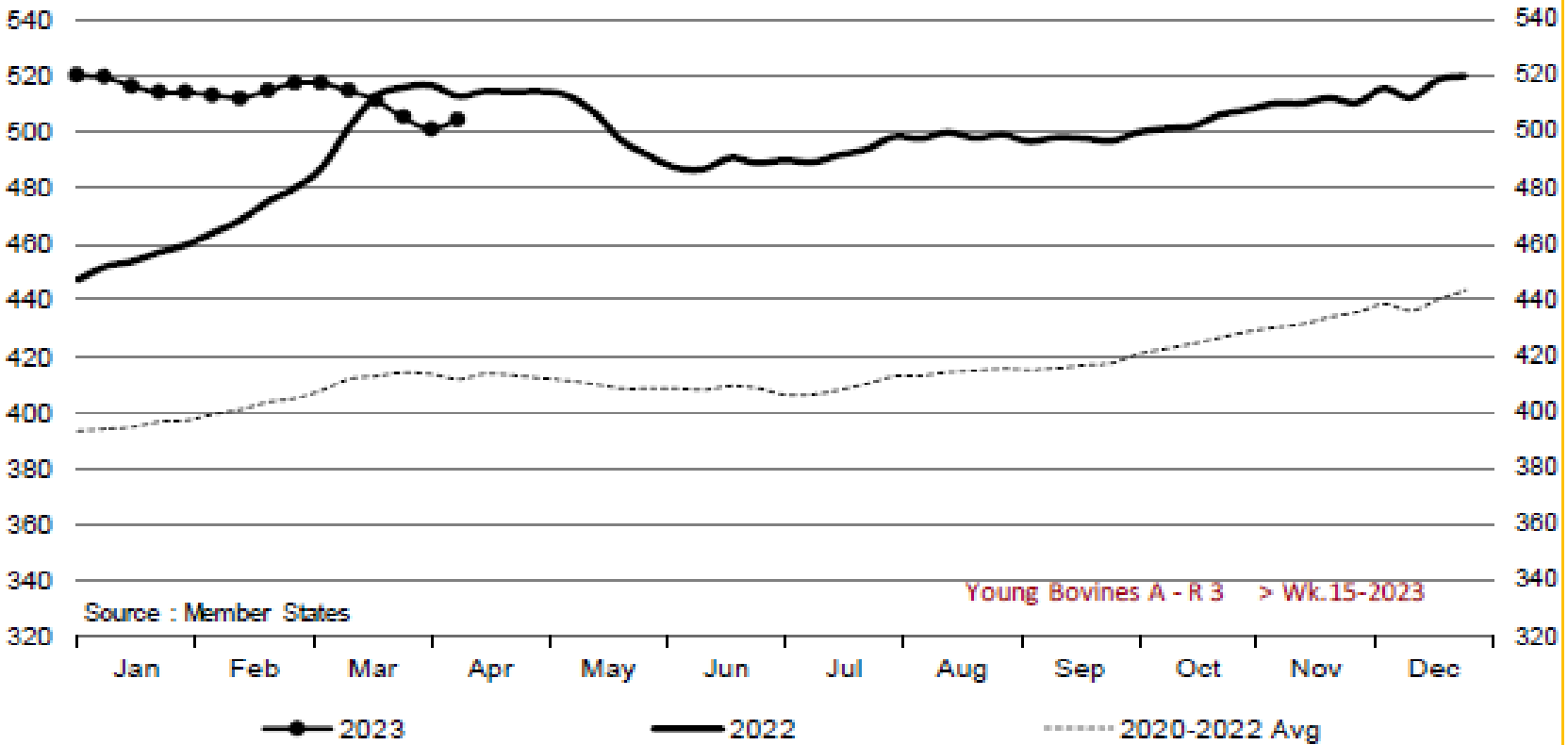
Price in week 15 : 507.12 Average price in March 2023 : 511.24
 % change y/y : + 3.87% % change y/y : + 6.70%
 % Ref. Price in wk 0 : 228.0%







Young Bovines A - R 3 > Wk.15-2023

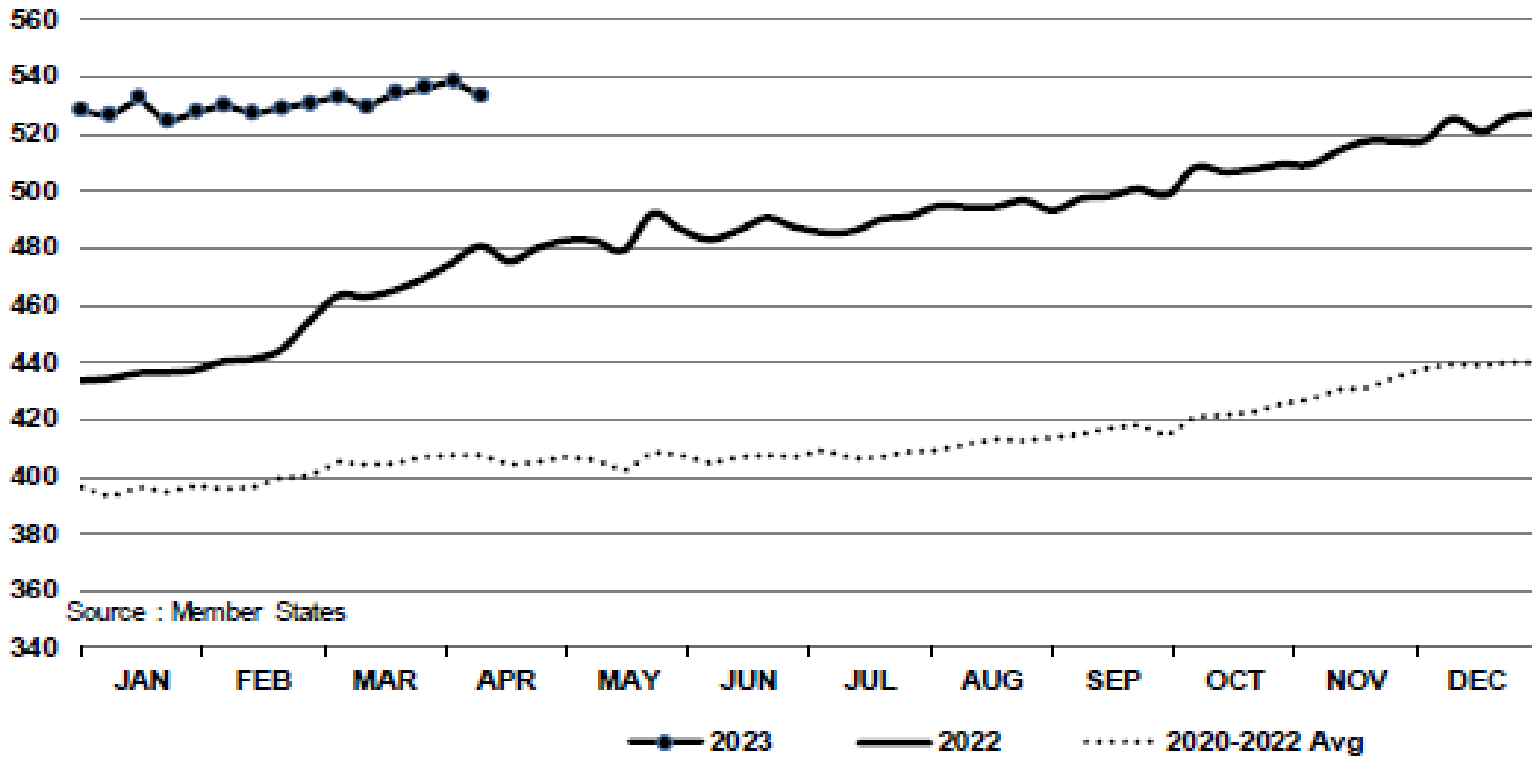


Price in week 15 : 504.34
% change y/y : - 1.7%

Average price in March 2023 : 513.38
% change y/y : + 2.9%

In € / 100 kg

Young Bovines 8-12m Z - R 3 > Wk.15-2023



Price in week 15 : 533.28

16/03/2023

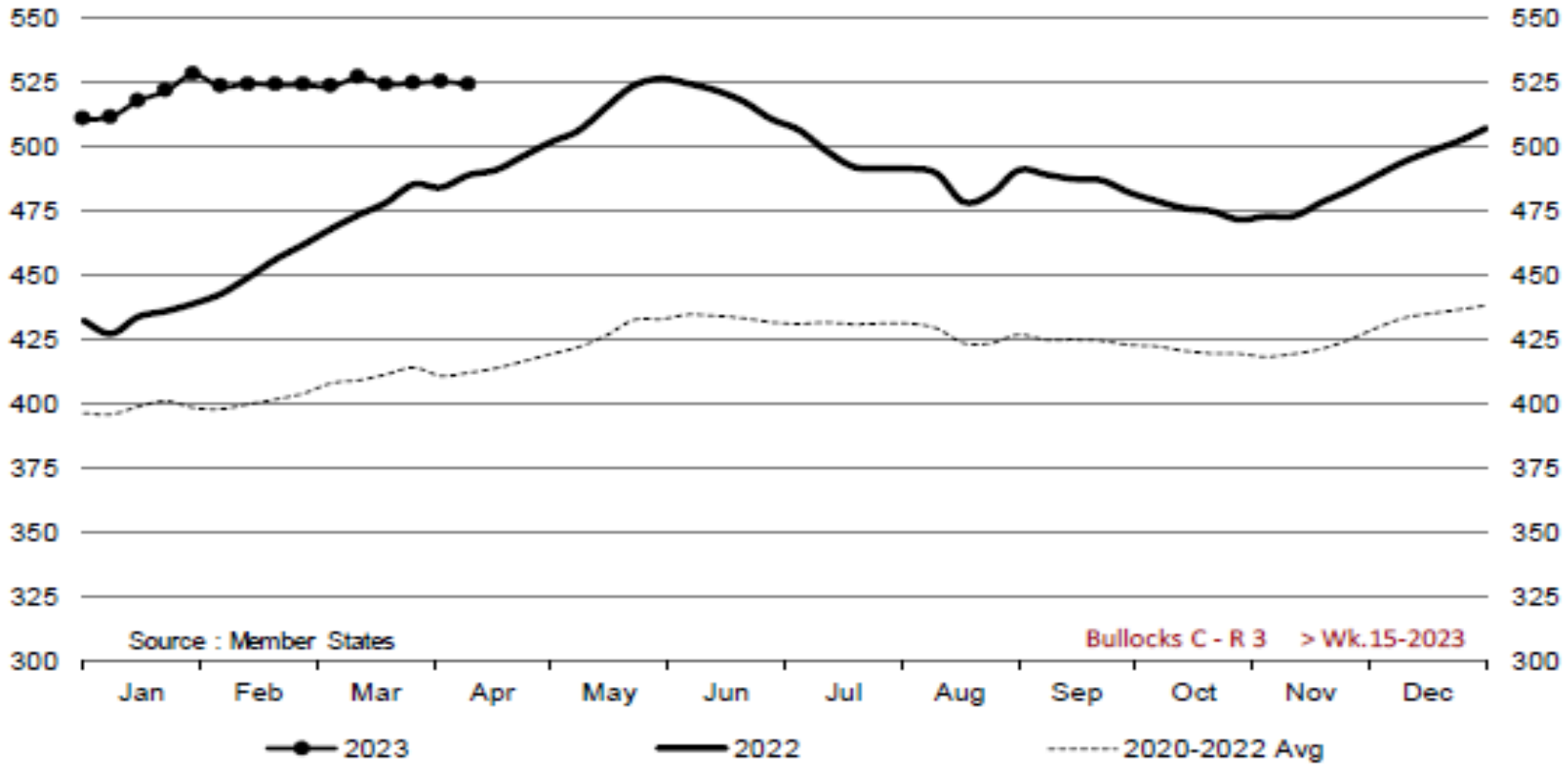
Average price in March 2023 : 532.58

% change y/y : + 10.9%

% change y/y : + 15.1%



Bullocks C - R 3 > Wk.15-2023

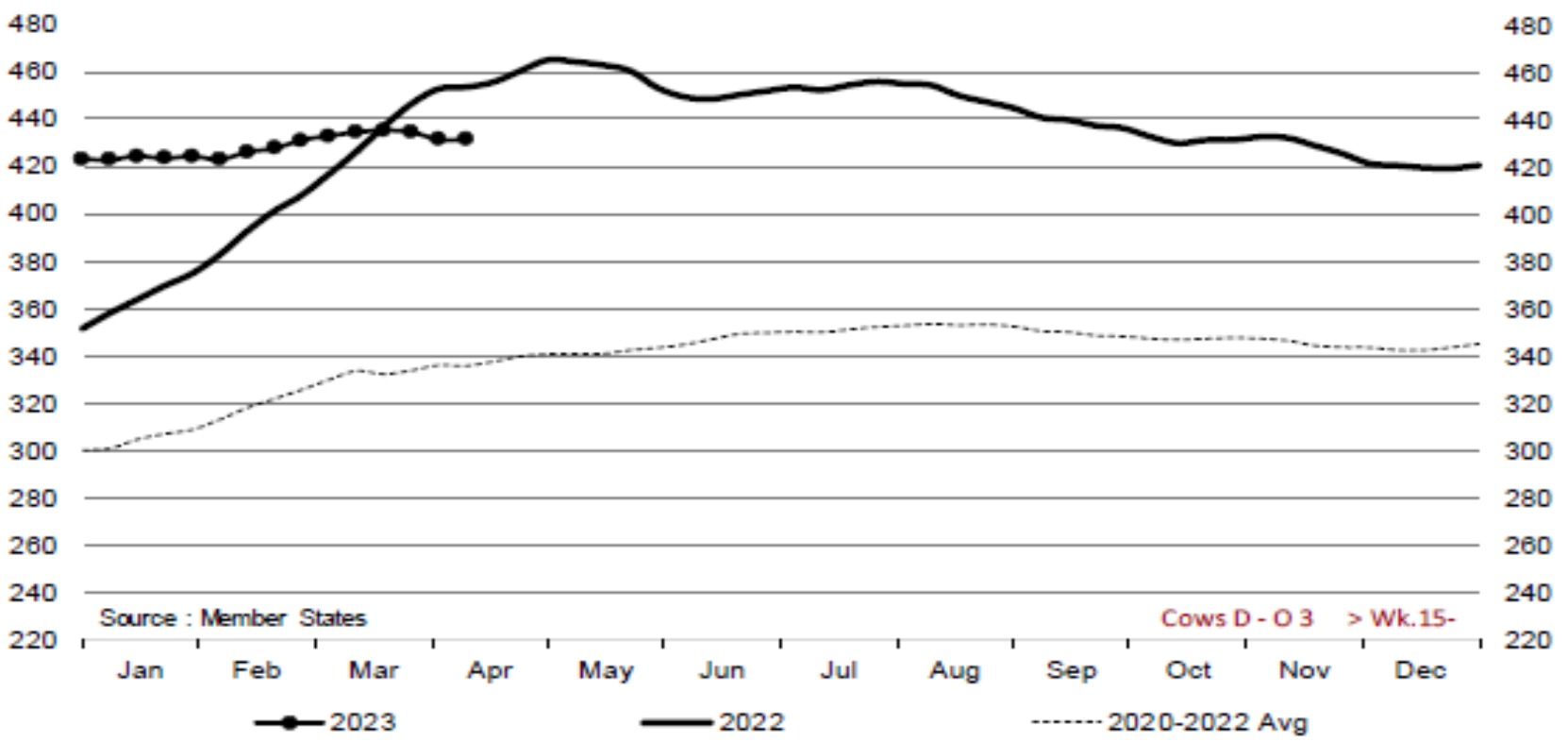


Price in week 15 : 524.30
% change y/y : + 7.2%

Average price in March 2023 : 524.81
% change y/y : + 11.0%



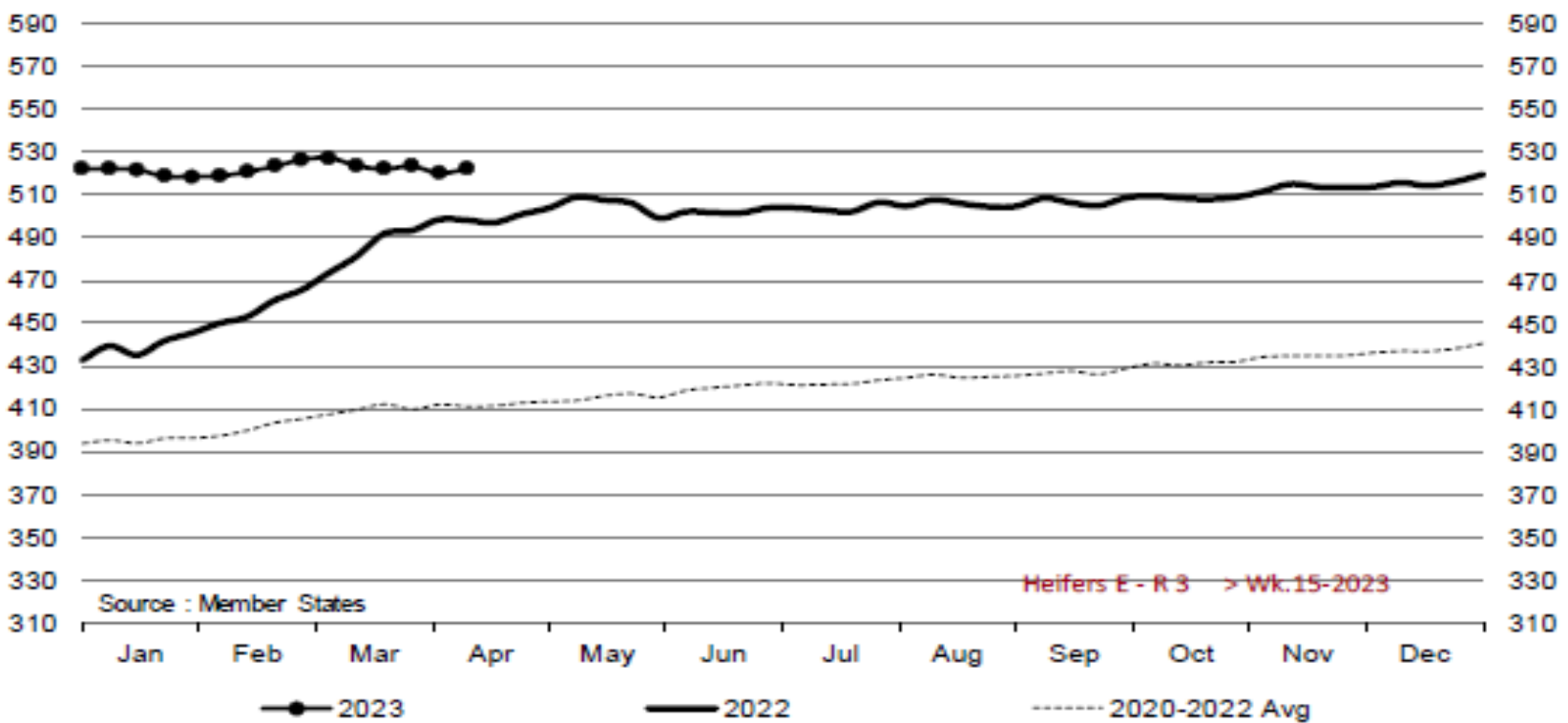
Cows D - O 3 > Wk.15-2023



Price in week 15 : 431.81 Average price in March 2023 : 434.06
% change y/y : - 4.8% % change y/y : + 2.0%



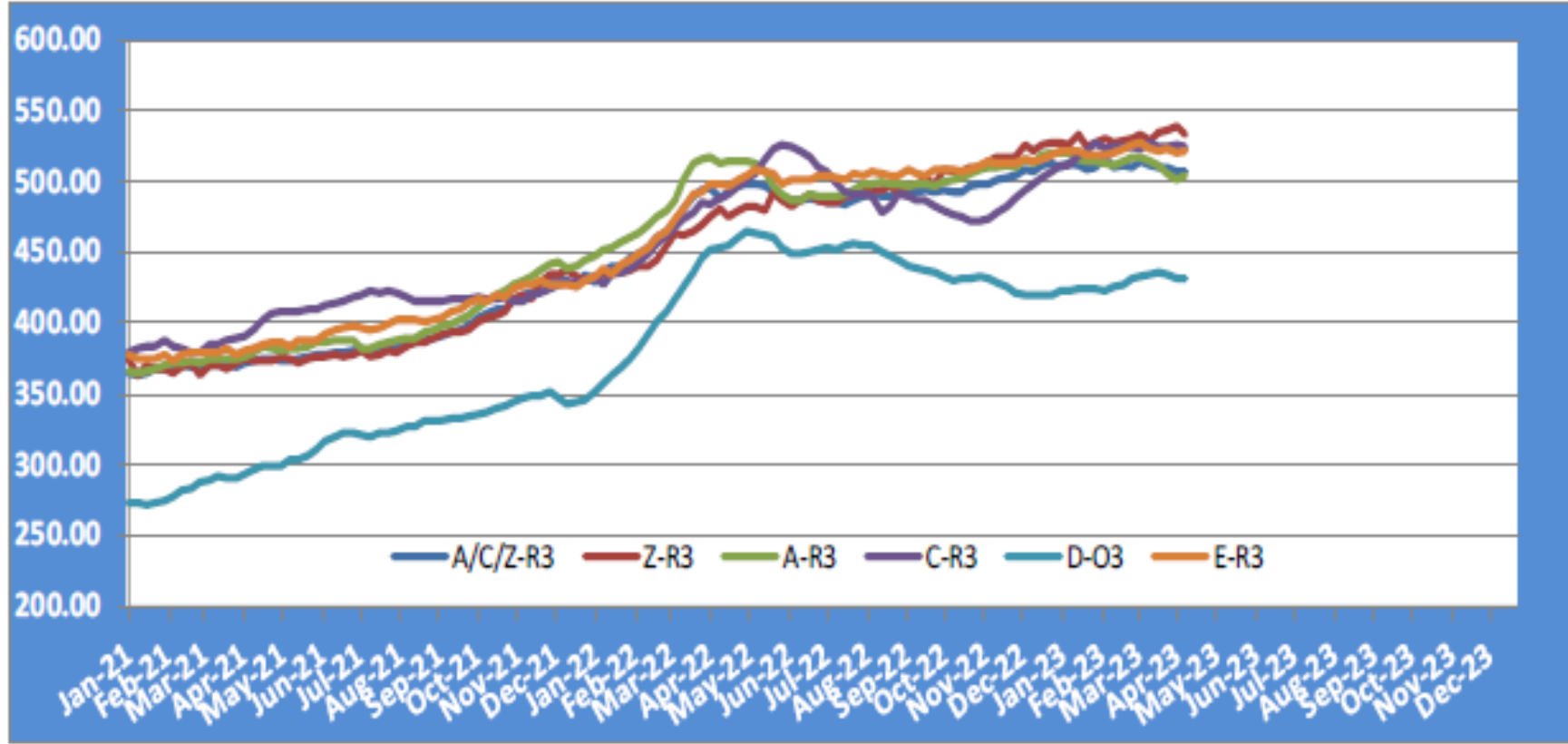
Heifers E - R 3 > Wk.15-2023



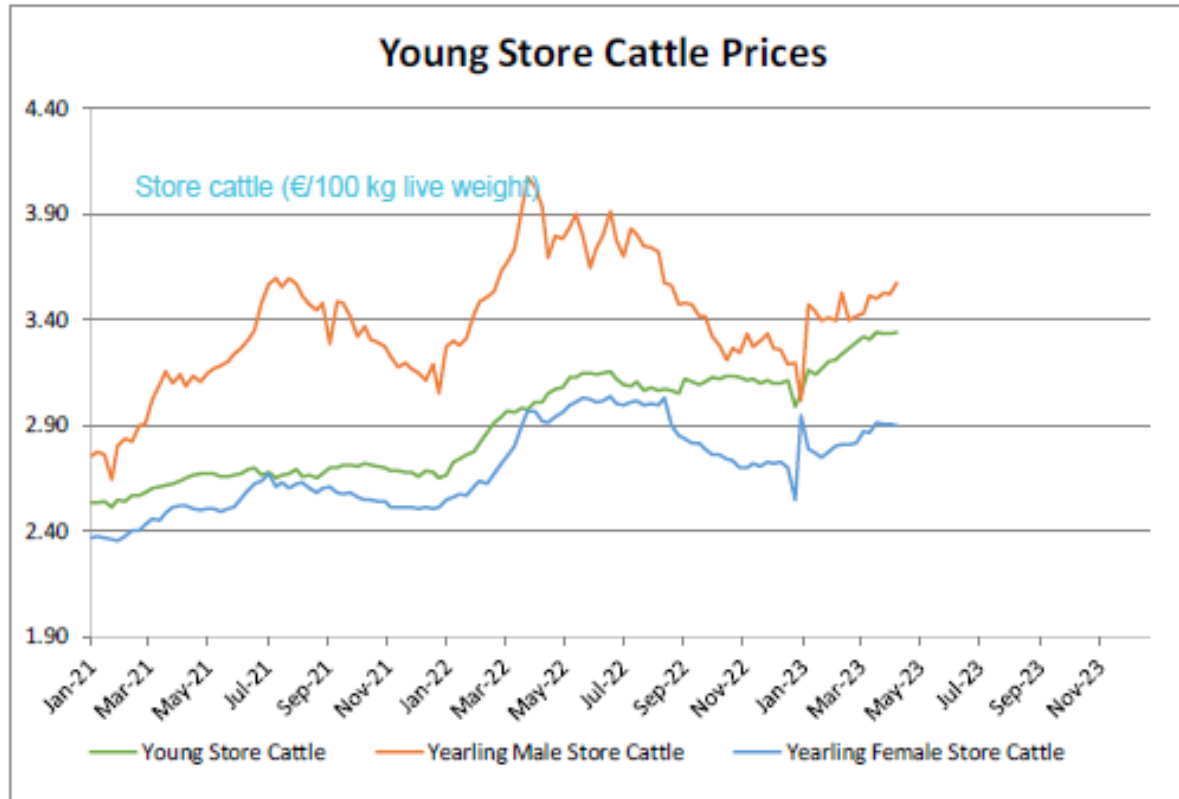
Price in week 15 : 522.25 Average price in March 2023 : 524.40
% change y/y : + 4.9% % change y/y : + 9.2%

KARKAS FİYATLARI

AB TÜM KATEGORİLERE GLOBAL BAKIŞ



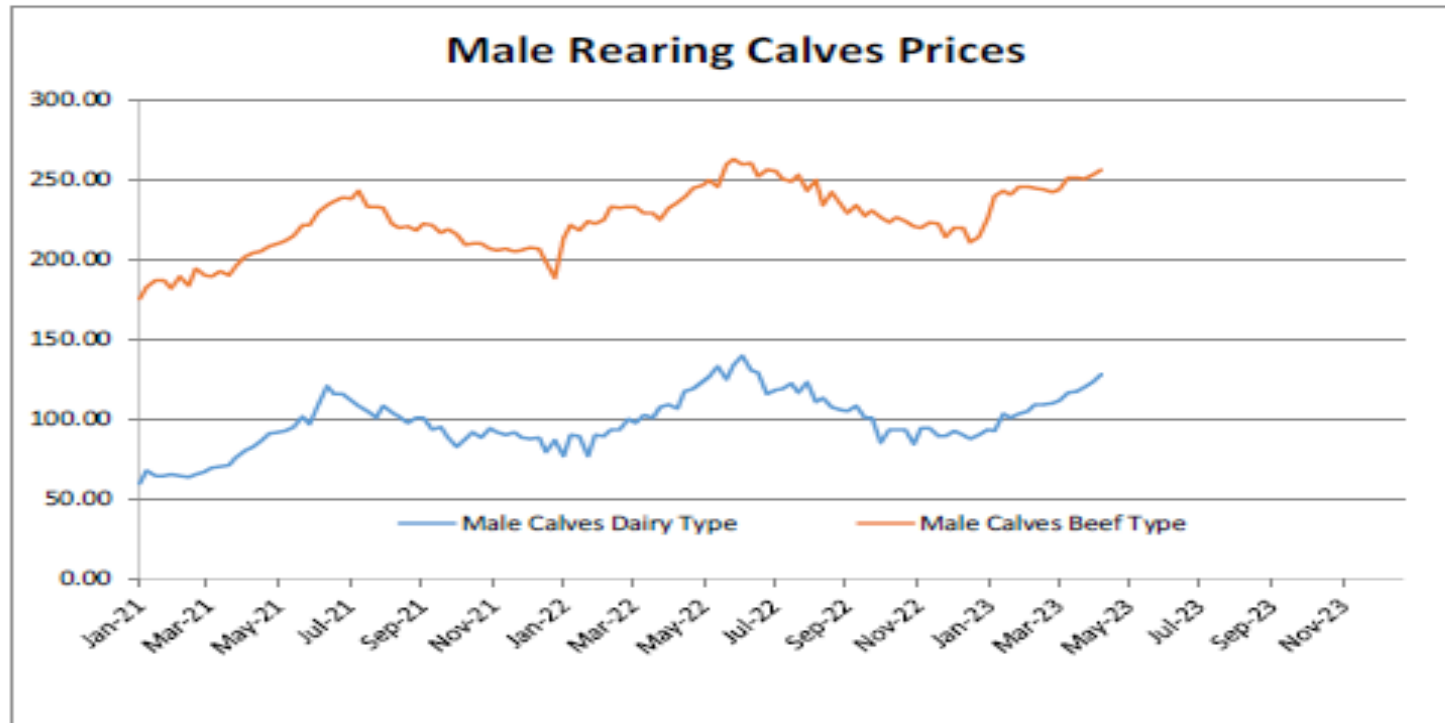
Besilik siğır (€ / 100 kg canlı ağırlık)



Young Store Cattle Price in	Week 15	3.34	Yearling Male Store Cattle Price	3.58
	Change y/y	+11.0%	Change y/y	-9.0%
Yearling Female Store Cattle Price		2.90		
	Change y/y	-0.7%		

8 gün ve 4 haftalık erkek buzağlar (€/baş)

Male calves aged between 8 days and 4 weeks (€/head)



Male Rearing Calves Beef type

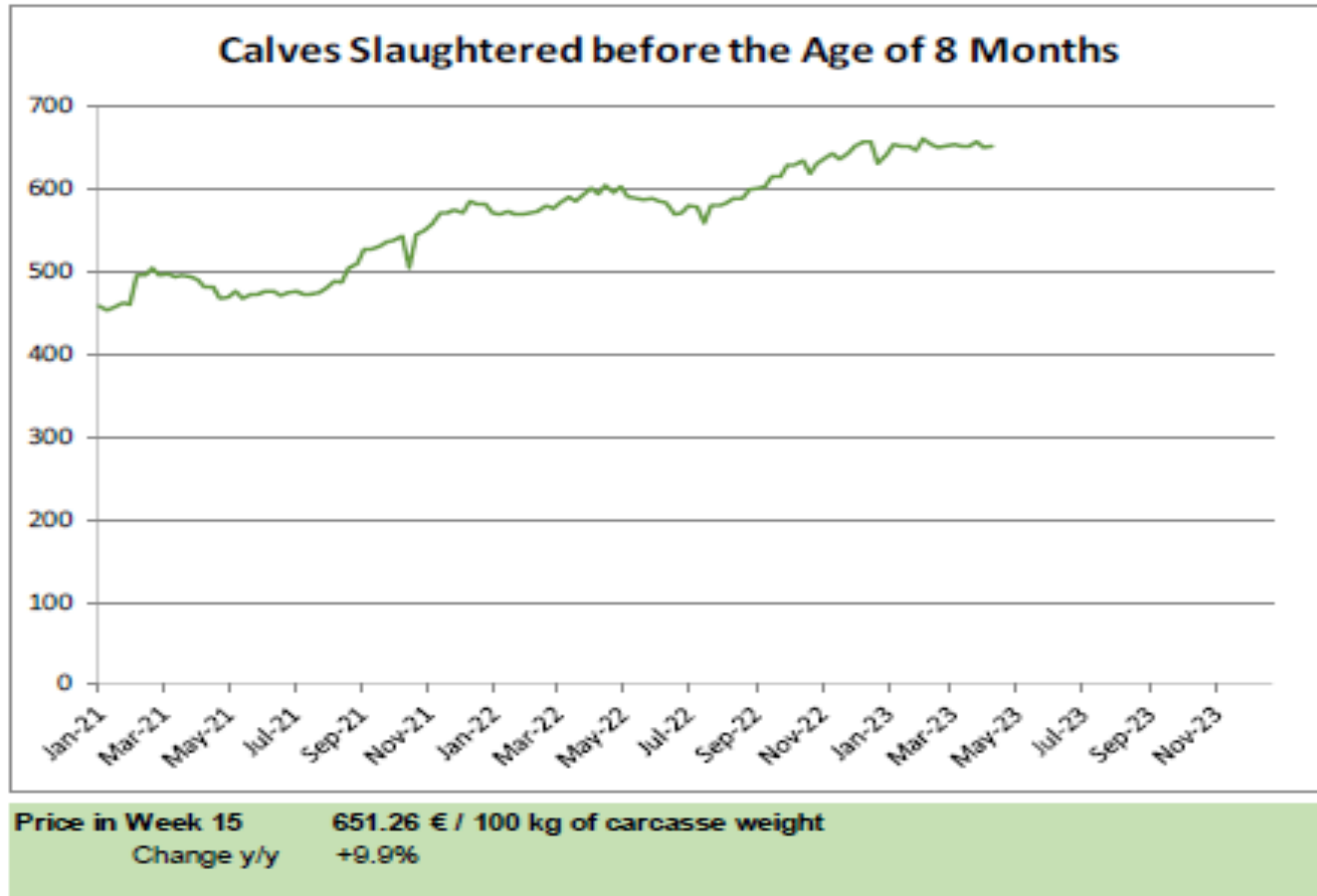
Price in Week 15 255.60
Change y/y +8.5%

Male Rearing Calves Dairy type

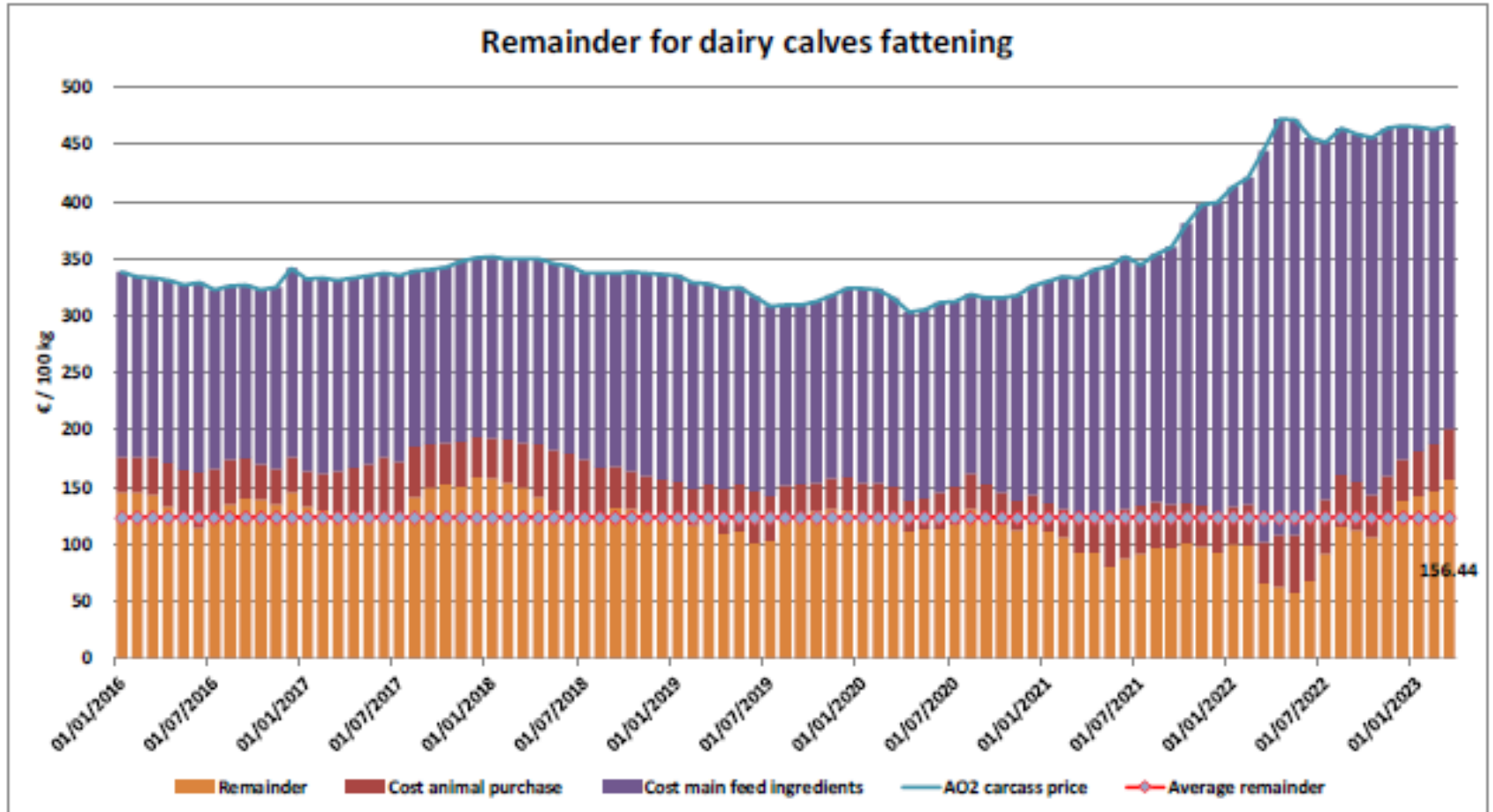
Price in Week 15 128.12
Change y/y +20.4%

8 aylıktan küçük kesilen buzağlar (€ / 100 kg canlı ağırlık)

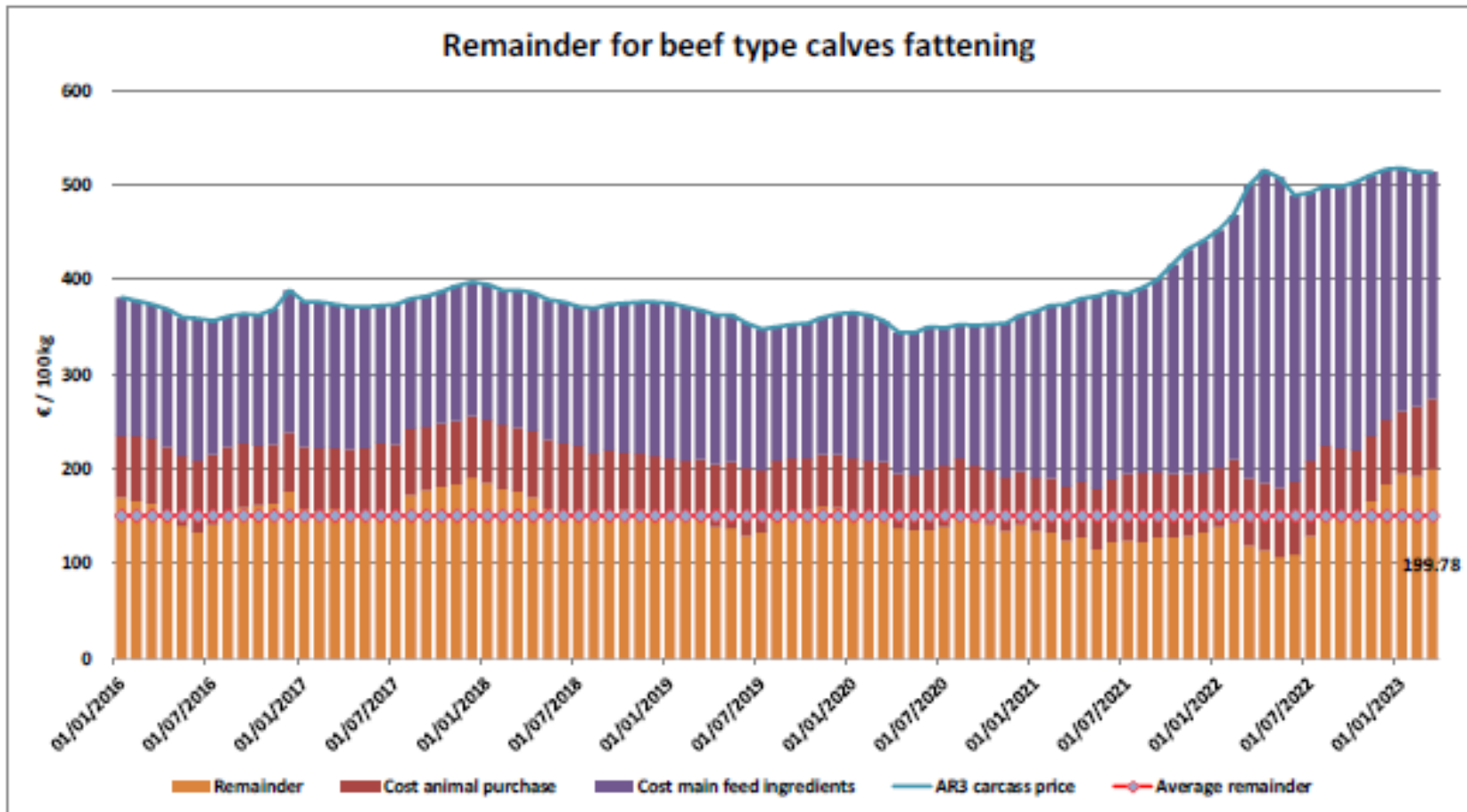
Calves slaughtered before the age of less than 8 months
(€/100 kg cw)



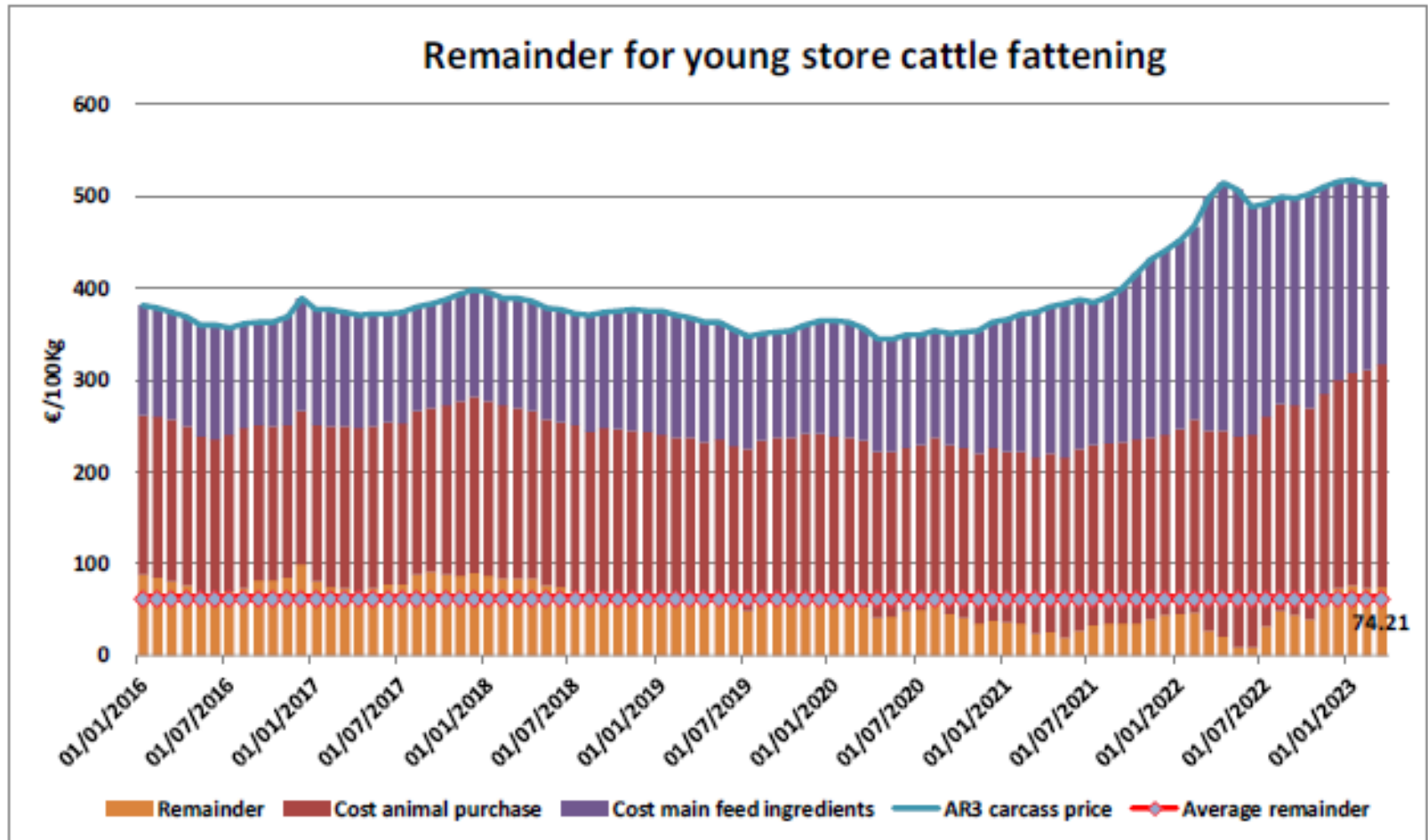
Süt Buzağları Besiciliği İçin Kalanlar



Sığır Tipi Buzağı Besiciliği İçin Kalanlar



Genç Besilik Sığır Besiciliği İçin Kalanlar



AB sığır eti ve canlı hayvan ihracatı (yağlar hariç): Pazar Rakamları (COMEXT – ton ca)

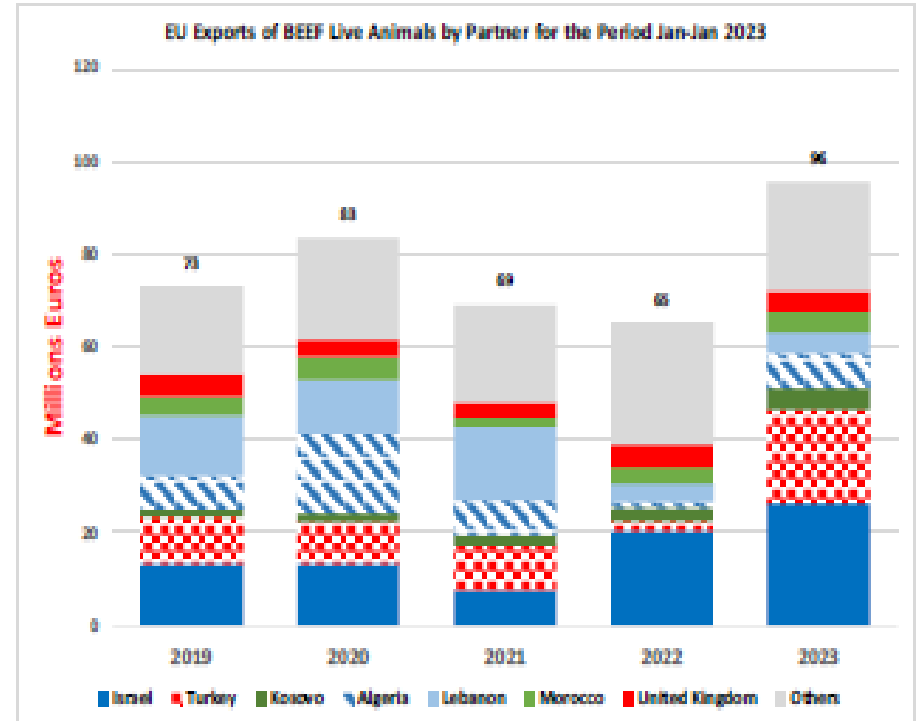
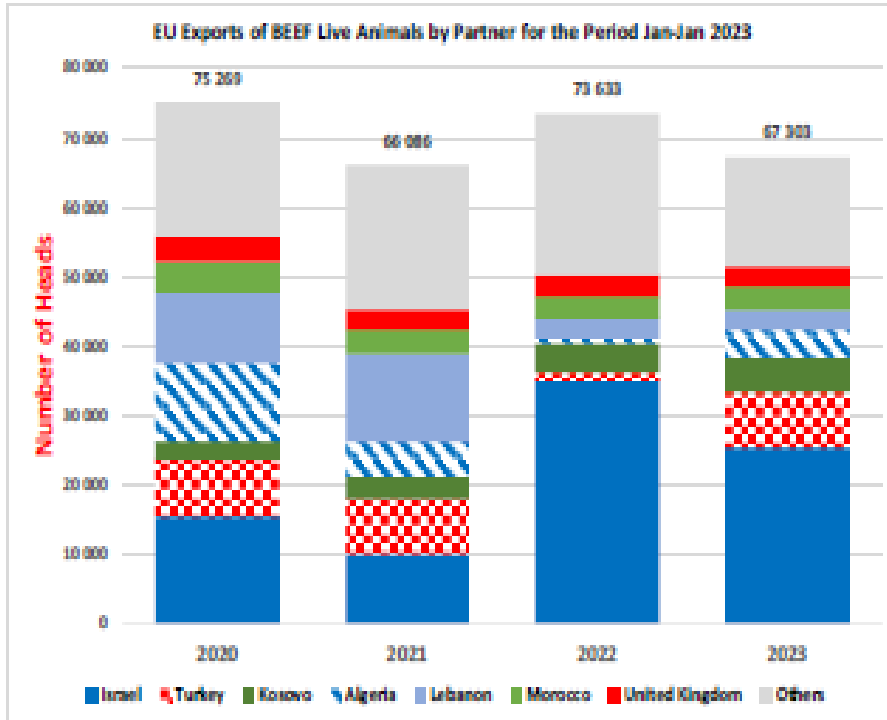
Destinations	2019		2020		2021		2022		Jan 23		Compared to
	tonnes	%	tonnes	%	tonnes	%	tonnes	%	tonnes	%	
United Kingdom	433 401	38.7%	450 442	39.5%	344 634	33.4%	385 338	40.1%	28 923	43.2%	+ 0.0%
Israel	48 505	4.3%	56 139	4.9%	66 022	6.4%	63 598	6.6%	5 787	8.6%	+ 5.2%
Turkey	34 555	3.1%	22 338	2.0%	14 953	1.5%	13 432	1.4%	2 846	4.3%	+++
Ivory Coast	33 396	3.0%	32 433	2.8%	29 187	2.8%	29 879	3.1%	2 625	3.9%	+ 2.4%
Bosnia-Herz.	40 013	3.6%	34 896	3.1%	40 504	3.9%	38 801	4.0%	2 450	3.7%	+ 2.5%
Ghana	39 196	3.5%	47 344	4.2%	47 618	4.6%	31 762	3.3%	1 848	2.8%	- 31.3%
Switzerland	21 398	1.9%	26 223	2.3%	28 717	2.8%	25 004	2.6%	1 807	2.7%	+ 0.9%
Kosovo	9 896	0.9%	10 391	0.9%	16 478	1.6%	17 086	1.8%	1 319	2.0%	+ 15.7%
Canada	6 756	0.6%	20 450	1.8%	20 670	2.0%	19 795	2.1%	1 275	1.9%	- 39.1%
Hong Kong	46 639	4.2%	56 713	5.0%	44 769	4.3%	10 494	1.1%	1 122	1.7%	- 15.6%
Morocco	12 982	1.2%	10 049	0.9%	11 868	1.2%	8 273	0.9%	1 025	1.5%	+ 43.2%
Algeria	57 152	5.1%	39 396	3.5%	24 111	2.3%	25 459	2.6%	1 001	1.5%	+++
Senegal	5 586	0.5%	4 627	0.4%	4 886	0.5%	5 319	0.6%	894	1.3%	+ 88.6%
Lebanon	36 221	3.2%	33 709	3.0%	19 527	1.9%	21 042	2.2%	882	1.3%	- 4.1%
Japan	7 982	0.7%	11 885	1.0%	21 888	2.1%	19 926	2.1%	849	1.3%	- 47.1%
USA	1 603	0.1%	12 308	1.1%	11 430	1.1%	9 575	1.0%	794	1.2%	- 38.1%
Other Destinations	284 795	25.4%	270 035	23.7%	283 711	27.5%	237 030	24.0%	11 527	17.2%	
Total	1 120 078		1 139 378		1 030 975		961 821		66 973		
% change			+ 2%		- 10%		- 7%		- 7.7%		

AB sığır eti ihracatı (canlı hayvanlar ve yağlar hariç): Pazar Rakamları (COMEXT – ton ca)

Destinations

	2019		2020		2021		2022		Jan 23		Compared to
	tonnes	%	tonnes	%	tonnes	%	tonnes	%	tonnes	%	
United Kingdom	422 733	47.8%	429 367	47.5%	329 540	40.5%	372 087	48.7%	28 251	54.5%	#N/A
Ivory Coast	33 396	3.8%	32 433	3.6%	29 187	3.6%	29 879	3.9%	2 625	5.1%	+ 2.4%
Bosnia-Herz.	37 700	4.3%	32 596	3.6%	37 581	4.6%	35 522	4.7%	2 205	4.3%	+ 0.8%
Ghana	39 196	4.4%	47 344	5.2%	47 618	5.9%	31 762	4.2%	1 848	3.6%	- 31.3%
Switzerland	20 320	2.3%	25 170	2.8%	27 394	3.4%	23 780	3.1%	1 745	3.4%	+ 3.0%
Israel	21 902	2.5%	21 131	2.3%	20 548	2.5%	20 876	2.7%	1 563	3.0%	+ 1.5%
Canada	6 756	0.8%	20 450	2.3%	20 670	2.5%	19 795	2.6%	1 275	2.5%	- 39.1%
Hong Kong	46 639	5.3%	56 713	6.3%	44 769	5.5%	10 494	1.4%	1 122	2.2%	- 15.6%
Japan	7 982	0.9%	11 885	1.3%	21 888	2.7%	19 926	2.6%	849	1.6%	- 47.1%
USA	7 866	0.9%	12 308	1.4%	11 430	1.4%	9 575	1.3%	794	1.5%	- 38.1%
Ukraine	12 684	1.4%	13 992	1.5%	13 681	1.7%	11 525	1.5%	737	1.4%	- 34.4%
Philippines	31 302	3.5%	33 650	3.7%	34 666	4.3%	29 703	3.9%	679	1.3%	- 67.2%
Angola	8 410	1.0%	9 324	1.0%	7 600	0.9%	8 057	1.1%	632	1.2%	- 7.6%
North Macedonia	10 744	1.2%	10 034	1.1%	12 777	1.6%	9 492	1.2%	583	1.1%	- 6.0%
Senegal	5 248	0.6%	4 627	0.5%	4 530	0.6%	5 319	0.7%	537	1.0%	+ 13.3%
Other Destinations	169 566	19.2%	141 413	15.6%	146 665	18.0%	123 023	16.1%	5 830	11.3%	
Extra-EU	884 483		904 349		813 432		763 673		51 810		
Total (without UK)	884 483		904 349		813 432		763 673		51 810		
% change			+ 2%		- 10%		- 6%		- 14.2%		

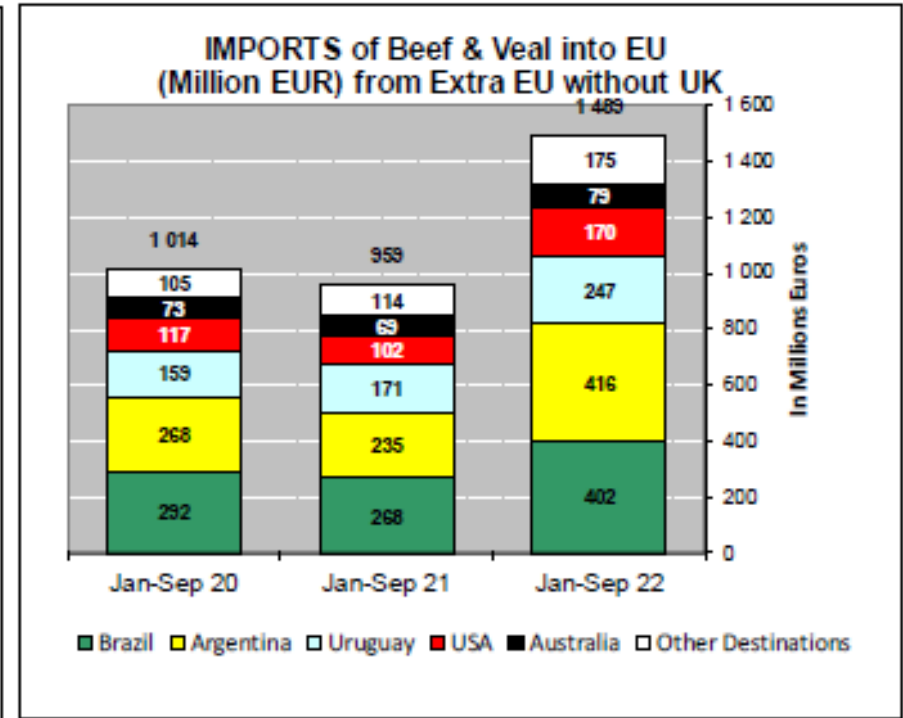
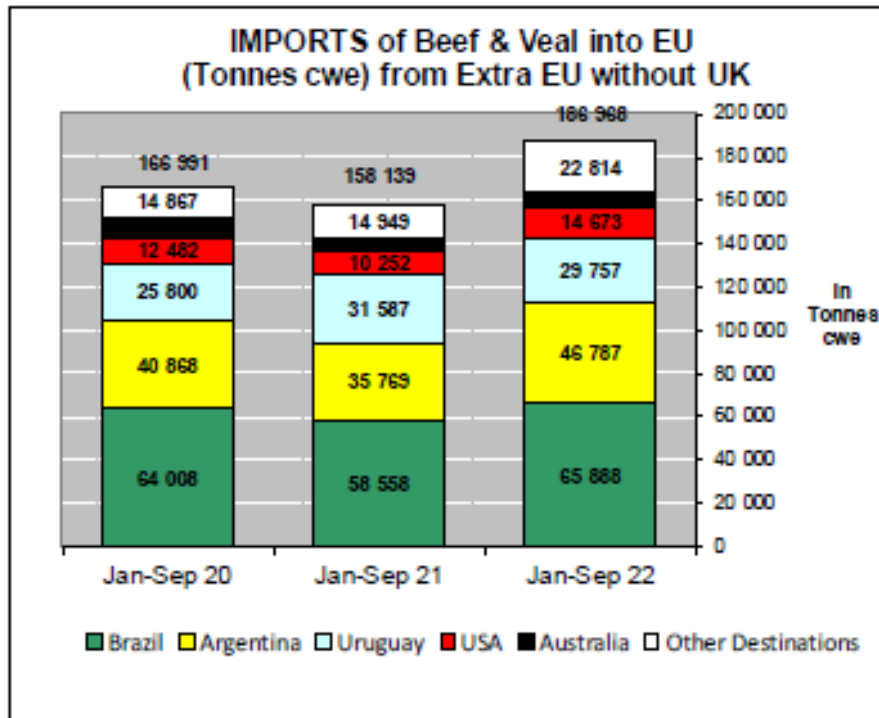
AB canlı hayvan ihracatı:



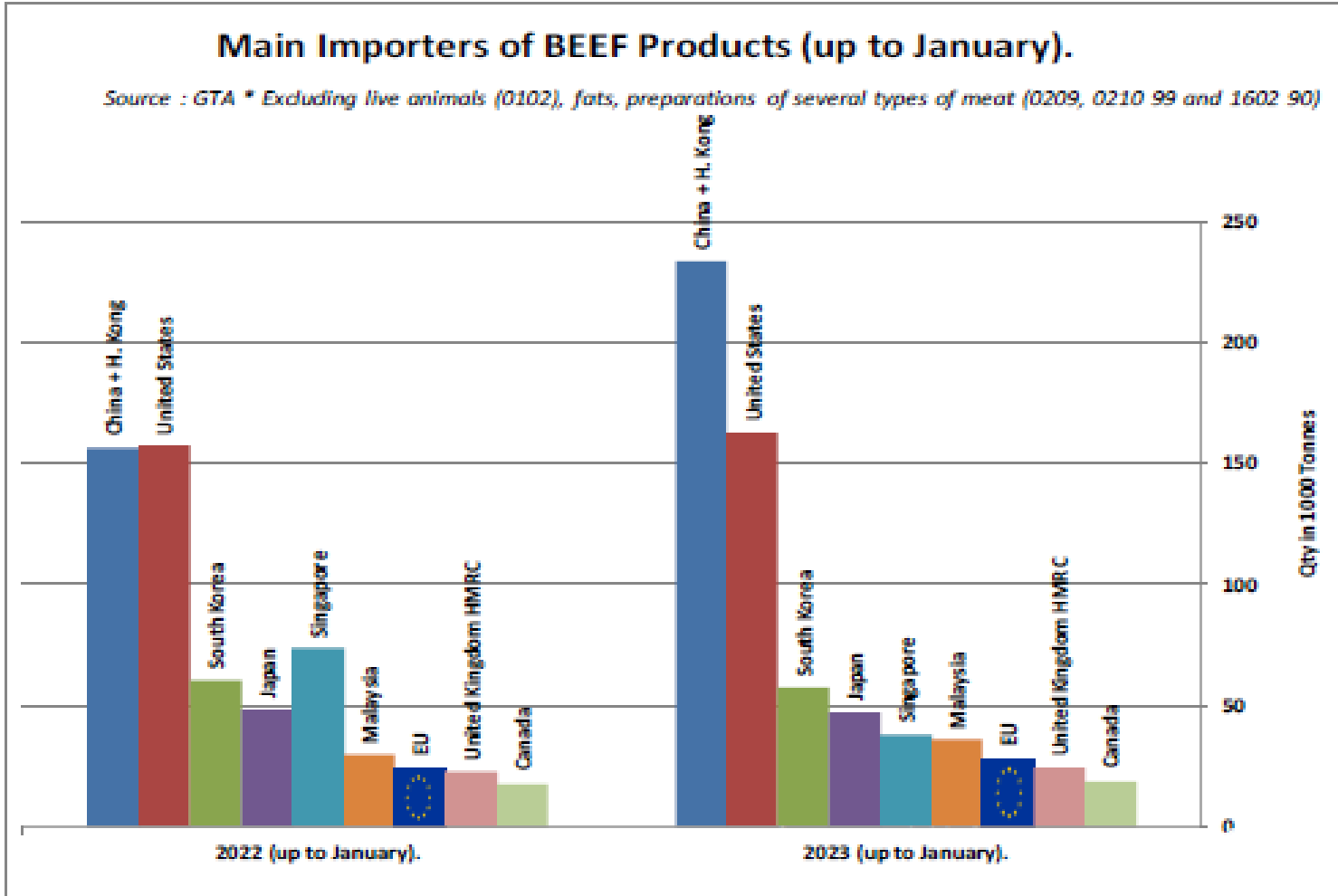
AB Sığır Eti ve Canlı Hayvan İthalatları (yağlar hariç):

Origins	2019		2020		2021		2022		Jan 23		Compared to
	tonnes	%	tonnes	%	tonnes	%	tonnes	%	tonnes	%	
United Kingdom	150 838	35.6%	120 733	35.1%	87 599	28.3%	142 262	36.8%	12 590	35.0%	+ 52.1%
Brazil	99 569	23.5%	84 139	24.4%	81 737	26.4%	86 428	22.3%	8 097	22.5%	+ 3.0%
Argentina	65 324	15.4%	56 421	16.4%	52 300	16.9%	63 575	16.4%	6 599	18.4%	+ 35.9%
Uruguay	40 483	9.5%	34 611	10.0%	42 669	13.8%	38 049	9.8%	4 822	13.4%	- 9.7%
USA	16 852	4.0%	16 532	4.8%	14 910	4.8%	17 803	4.6%	932	2.6%	+ 9.8%
Australia	16 432	3.9%	11 058	3.2%	8 925	2.9%	8 886	2.3%	928	2.6%	- 36.2%
Paraguay	5 203	1.2%	4 234	1.2%	3 933	1.3%	5 404	1.4%	511	1.4%	+ 14.5%
Namibia	7 706	1.8%	1 445	0.4%	1 996	0.6%	5 168	1.3%	489	1.4%	+ 78.0%
Switzerland	4 393	1.0%	4 187	1.2%	4 714	1.5%	4 729	1.2%	309	0.9%	- 29.4%
New Zealand	6 712	1.6%	6 116	1.8%	4 380	1.4%	5 589	1.4%	290	0.8%	+ 18.0%
Canada	2 518	0.6%	1 550	0.5%	1 816	0.6%	2 177	0.6%	109	0.3%	+ 5.2%
Serbia	1 062	0.3%	931	0.3%	963	0.3%	1 058	0.3%	103	0.3%	+ 6.8%
Norway	125	0.0%	335	0.1%	571	0.2%	705	0.2%	63	0.2%	+++
Japan	997	0.2%	789	0.2%	1 478	0.5%	2 893	0.7%	51	0.1%	- 62.2%
Chile	392	0.1%	168	0.0%	238	0.1%	396	0.1%	33	0.1%	+ 40.9%
Montenegro	0	0.0%	0	0.0%	31	0.0%	75	0.0%	3	0.0%	+ 23.7%
Other Destinations	5 434	1.3%	1 145	0.3%	1 010	0.3%	1 814	0.5%	5	0.0%	
Total	424 040		344 393		309 270		387 011		35 934		
% change			- 19%		- 10%		+ 25%		+ 17.8%		

AB Sığır Eti ve Canlı Hayvan İthalatları (yağlar hariç)

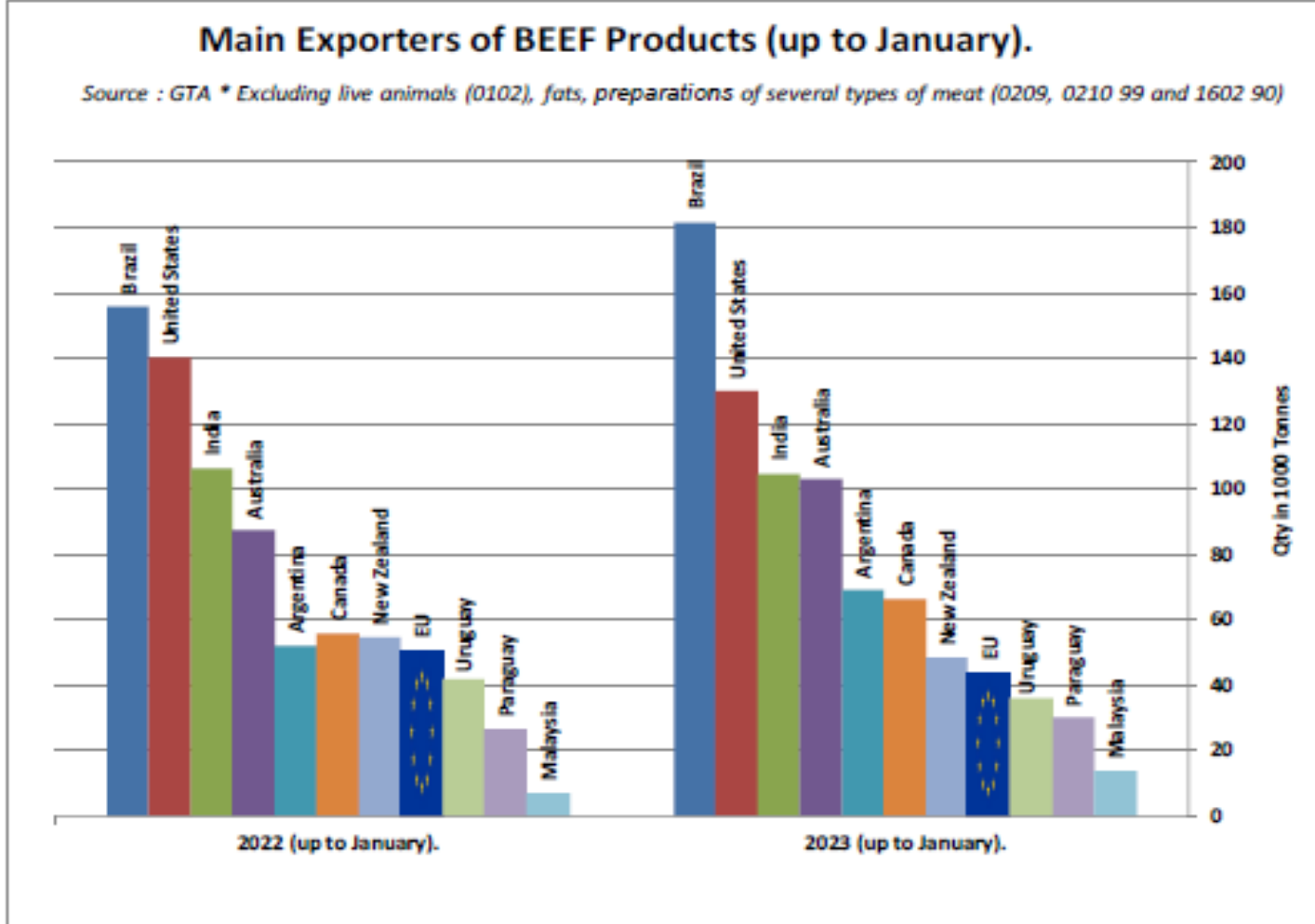


SIĞIR ETİ ÜRÜNLERİNİN NET İTHALATÇILARI (OCAK)





SIĞIR ETİ ÜRÜNLERİNİN NET İHRACATÇILARI (OCAK)

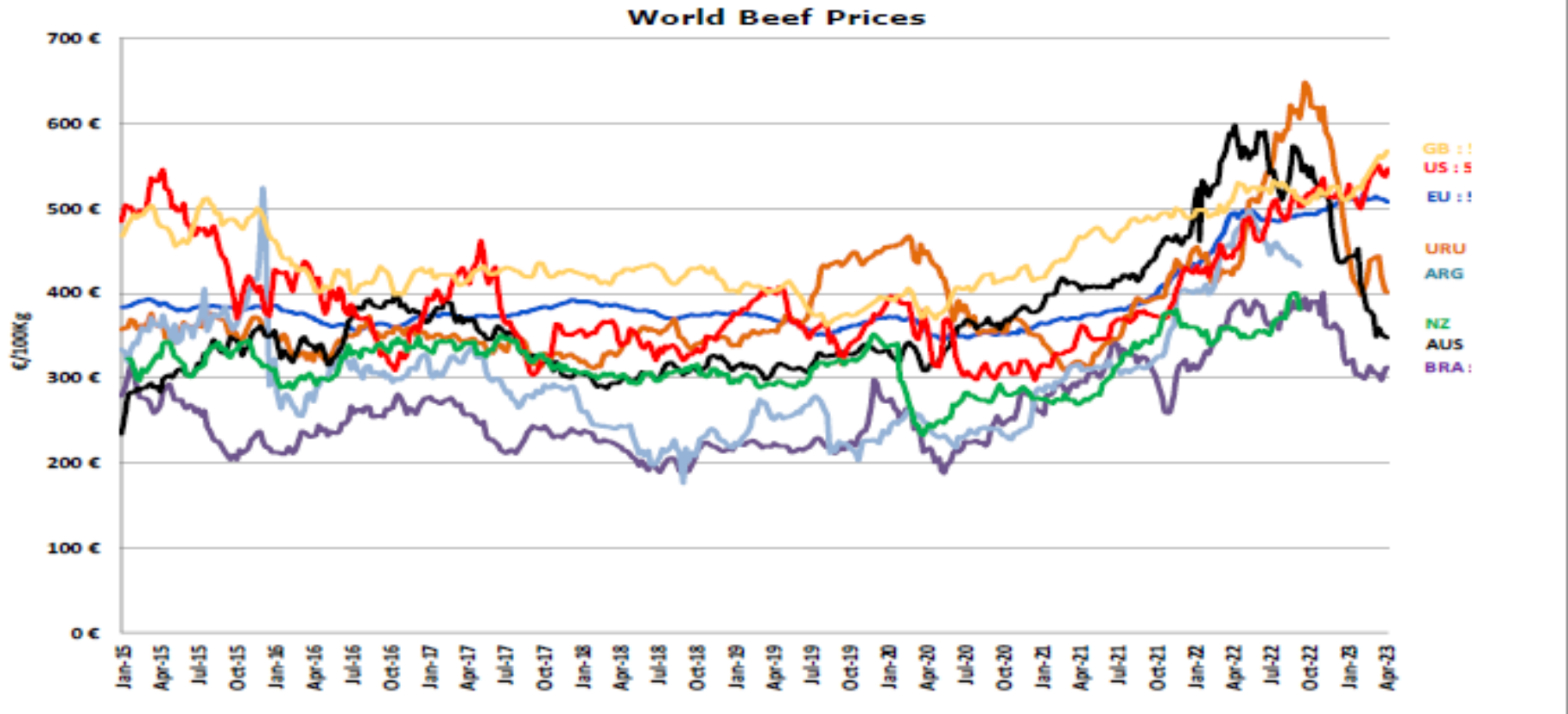


DÜNYA SIĞIR ETİ PAZARI



European
Commission

Dünya Sığır Fiyatları AB, ABD, AVUSTURYA, YENİ ZELANDA



ECB <http://sdw.ecb.europa.eu/browse.do?node=2018794>
US <https://www.marketnews.usda.gov/mnp/is-home>
AUS <https://www.mia.com.au/prices-markets/cattle/processoryearlingsteer/>
UY <http://www.inec.gub.uy/innovaportal/v/11034/10/innova.front/indicadores-y-precios>
ARG http://www.abc-consorcio.com.ar/Estadisticas/detalle/117/precios_comparativos_del_novillo.html
BR <http://www.pecuaria.com.br/cotacoes.php>
NZ http://www.abc-consorcio.com.ar/Estadisticas/detalle/117/precios_comparativos_del_novillo.html
GB <https://ahdb.org.uk/beef/gb-deadweight-cattle-prices-by-region>





Daha fazla bilgi için:

https://ec.europa.eu/agriculture/market-observatory/meat_en

Ve Agri-FOOD Veri Portalı:

<http://agridata.ec.europa.eu>